



# THE CONNECTION

---

Economic Development and Our Community

## Consumer Price Index

Published September 24, 2025



# Overview

Index	Jul. 2024	Jul. 2025	Change, Jul. 2024 to Jul.2025 (%)
All Items	299.767	302.413	0.88%
Food	329.476	336.205	2.04%
Energy	313.664	305.909	-2.47%
Commodities	208.067	208.529	0.22%
Durables	120.463	121.173	0.59%
Nondurables	260.841	261.145	0.12%
Services	388.020	392.971	1.28%
All items less food and energy	300.693	303.581	0.96%

The Consumer Price Index (CPI) is a measure of the average change over time in the prices paid by urban consumers for a market basket of consumer goods and services, as defined by the Bureau of Labor Statistics (BLS).

The overall CPI for all items in DFW increased modestly by 0.88% last year, rising from 299.767 in July 2024 to 302.413 in July 2025. Food prices saw the largest increase, up 2.04% over the year, while energy costs declined by 2.47% during the same period.

Note: Data for all items, Food, Commodities, Durables, Nondurables, & Services is reported every other month. Data for Energy is reported monthly.  
Sources: Data sourced from the Bureau of Labor Statistics, CPI for All Urban Consumers (CPI-U), September 2025, and is not seasonally adjusted

# Food and Energy

Index	Jul. 2024	Jul. 2025	Change, Jul. 2024 to Jul.2025 (%)
Food	329.476	336.205	2.04%
Food at home	271.992	272.882	0.33%
Cereals and bakery products	312.397	318.983	2.11%
Meats, poultry, fish, and eggs	325.418	339.433	4.31%
Dairy and related products	245.465	242.362	-1.26%
Fruits and vegetables	227.758	216.816	-4.80%
Other food at home	266.823	260.261	-2.46%
Food away from home	417.989	435.297	4.14%
Gasoline	298.289	268.408	-10.02%

The rise in food prices was largely driven by sharp increases in cereals and bakery products, meats, poultry, fish, and eggs, as well as food consumed away from home. Notably, the “meats, poultry, fish, and eggs” category alone rose 4.31% between July 2024 and July 2025.

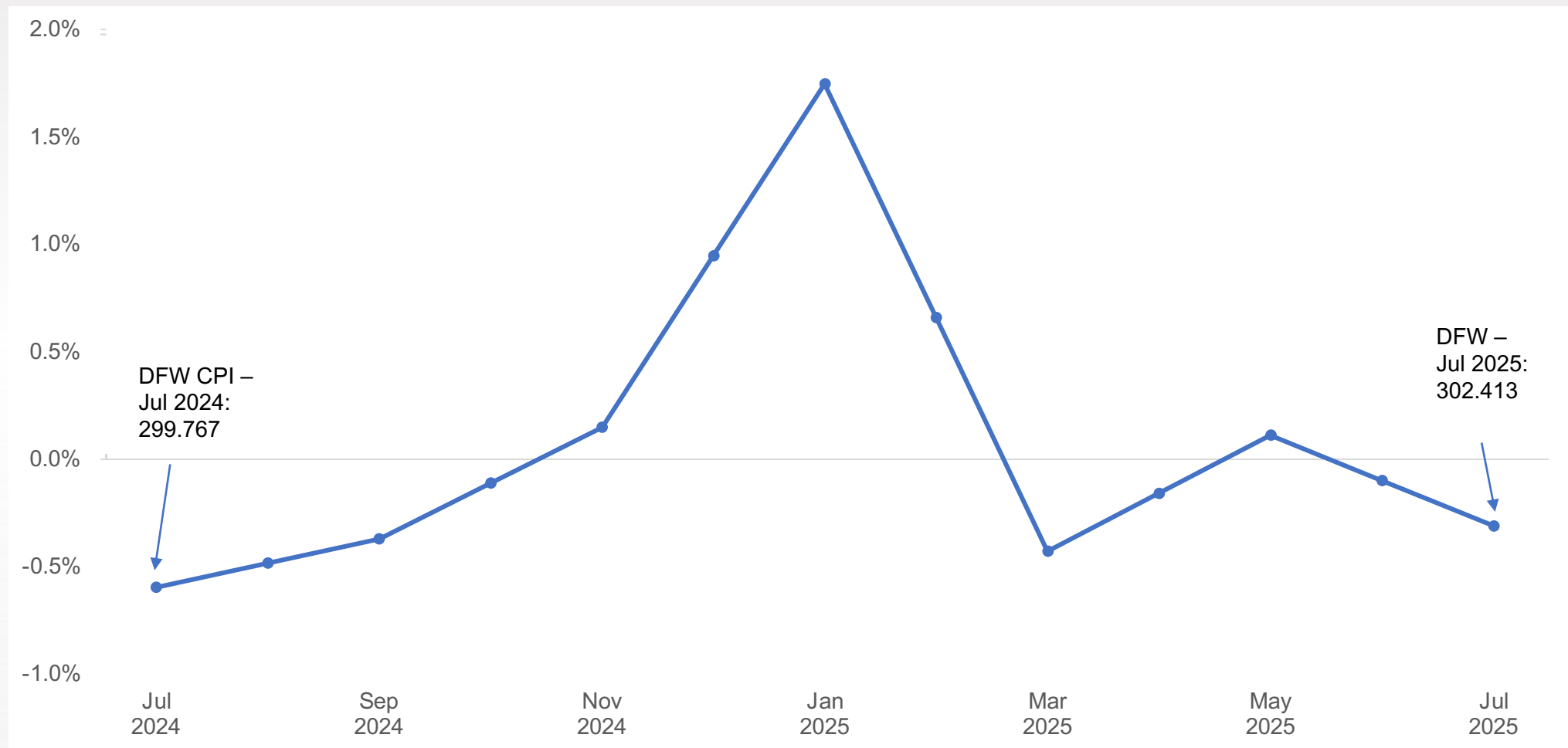
The sharp drop in energy prices was largely driven by a steep 10.2% decline in gasoline costs over the same period.

Note: Data is reported every other month.

Sources: Data sourced from the Bureau of Labor Statistics, CPI for All Urban Consumers (CPI-U), September 2025, and is not seasonally adjusted



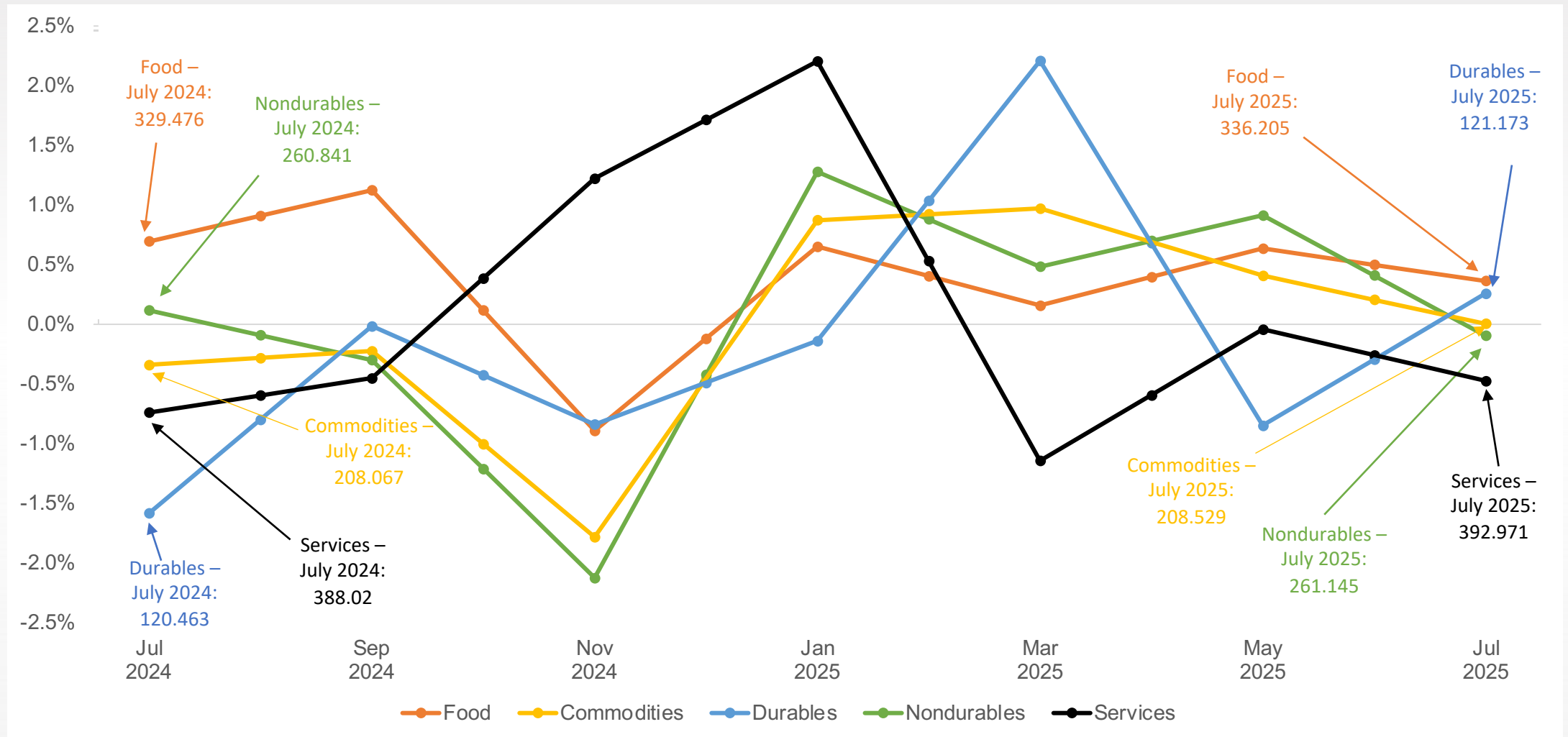
# Monthly Change in Consumer Price Index (DFW)



Note: Data for DFW is reported every other month.

Sources: Data for DFW sourced from the Bureau of Labor Statistics, CPI for All Urban Consumers (CPI-U), September 2025, and is not seasonally adjusted

# Monthly Change in Consumer Price Index (DFW)

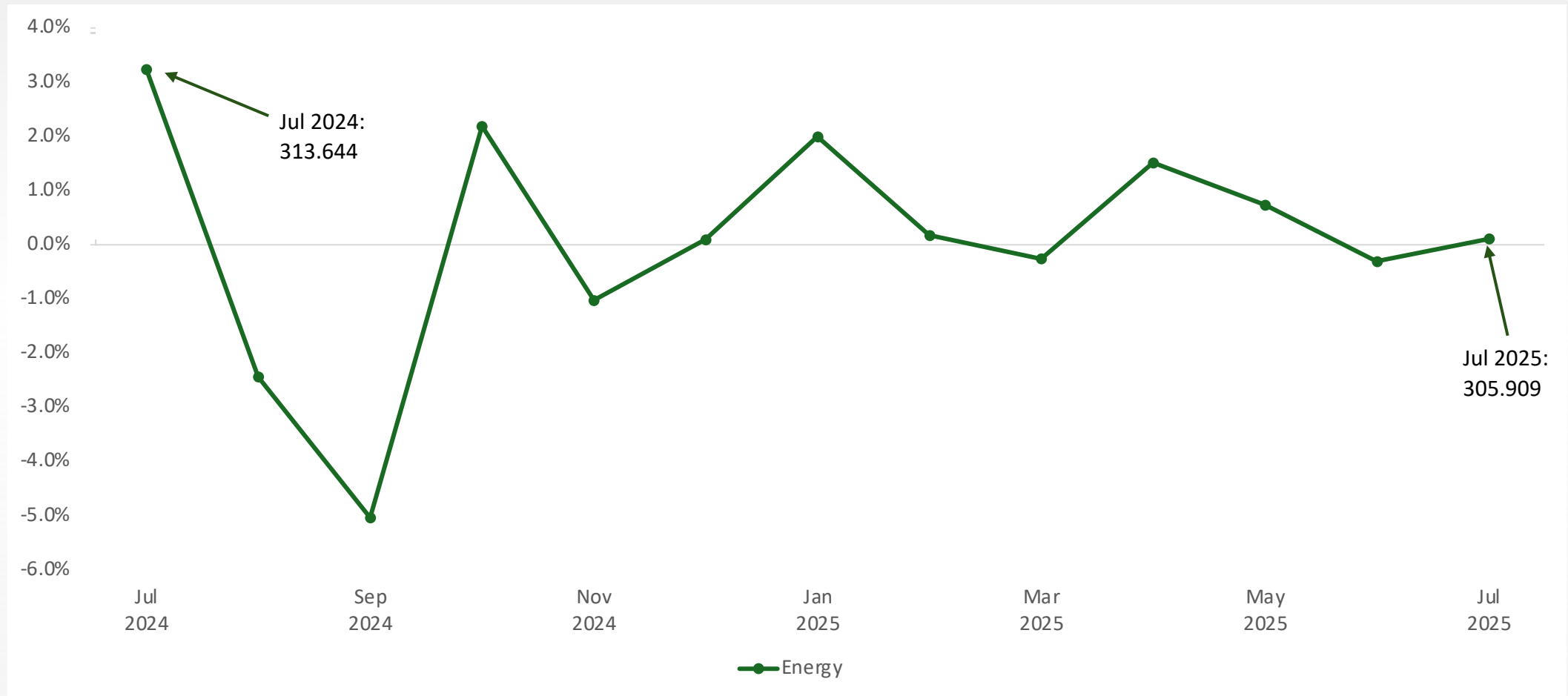


Note: Data for Food, Commodities, Durables, Nondurables, & Services is reported every other month.

Sources: Data sourced from the Bureau of Labor Statistics, CPI for All Urban Consumers (CPI-U), September 2025, and is not seasonally adjusted



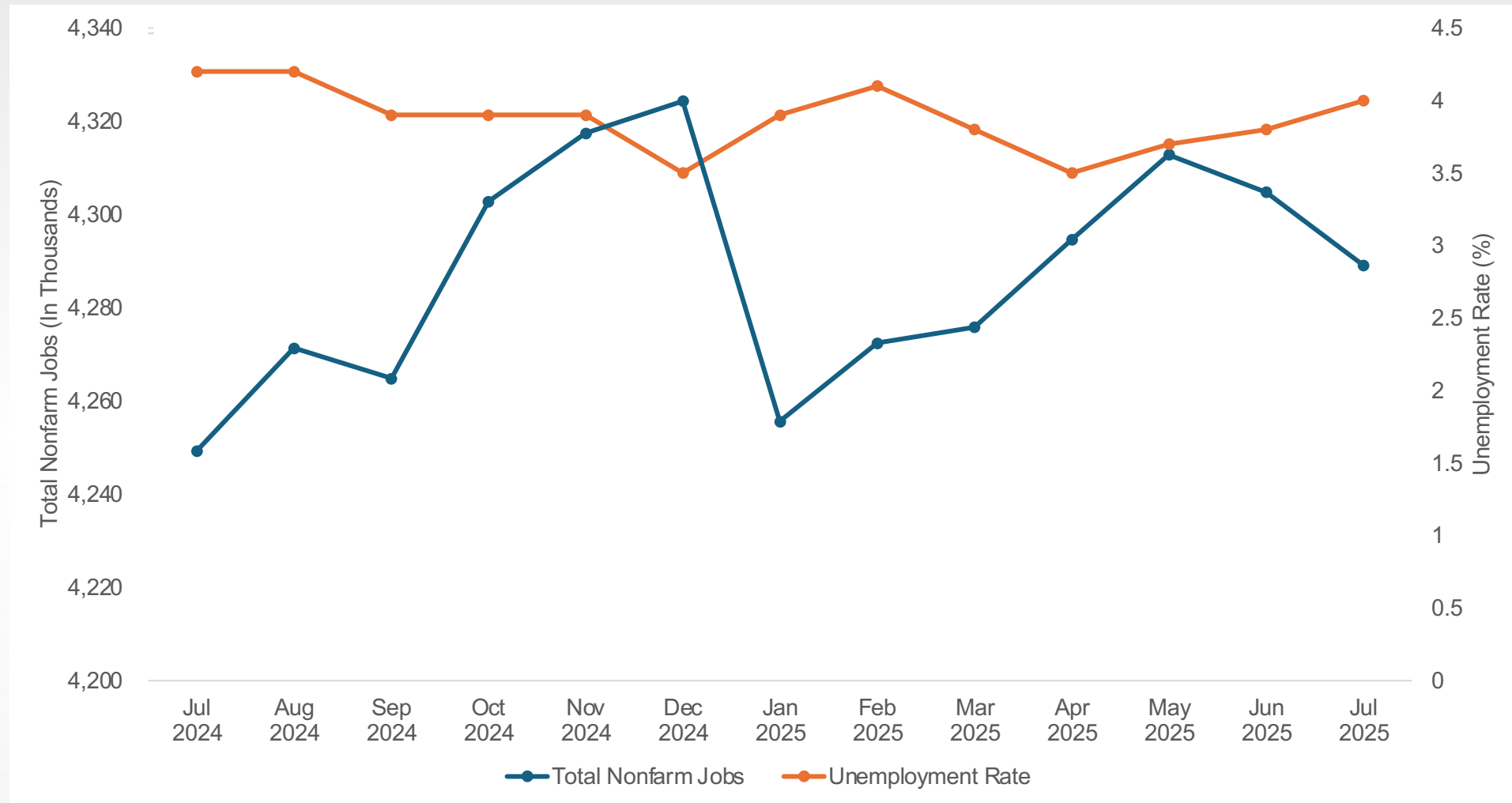
# Monthly Change in Consumer Price Index (DFW)



Note: Data for Energy is reported monthly.

Sources: Data sourced from the Bureau of Labor Statistics, CPI for All Urban Consumers (CPI-U), September 2025, and is not seasonally adjusted

# Unemployment Rate & Nonfarm Jobs in DFW



Total nonfarm employment grew modestly by 0.9% between July 2024 and July 2025. Jobs rose steadily through late 2024, peaking in December, before dipping slightly and climbing again until May 2025, when signs of decline emerged. During the same period, the unemployment rate improved, falling from 4.2% to 4.0%.

Sources: Bureau of Labor Statistics, September 2025, and is not seasonally adjusted

**SUBSCRIBE**

to the  
Economic Development Update  
newsletter

**QUESTIONS?**

[economicengine@utdallas.edu](mailto:economicengine@utdallas.edu)  
[economicengine.utdallas.edu](http://economicengine.utdallas.edu)