



THE CONNECTION

Economic Development and Our Community

*Growth in Our Region:
Evaluating UT Dallas Enrollment
and Regional Workforce Changes*

Published June 22, 2022

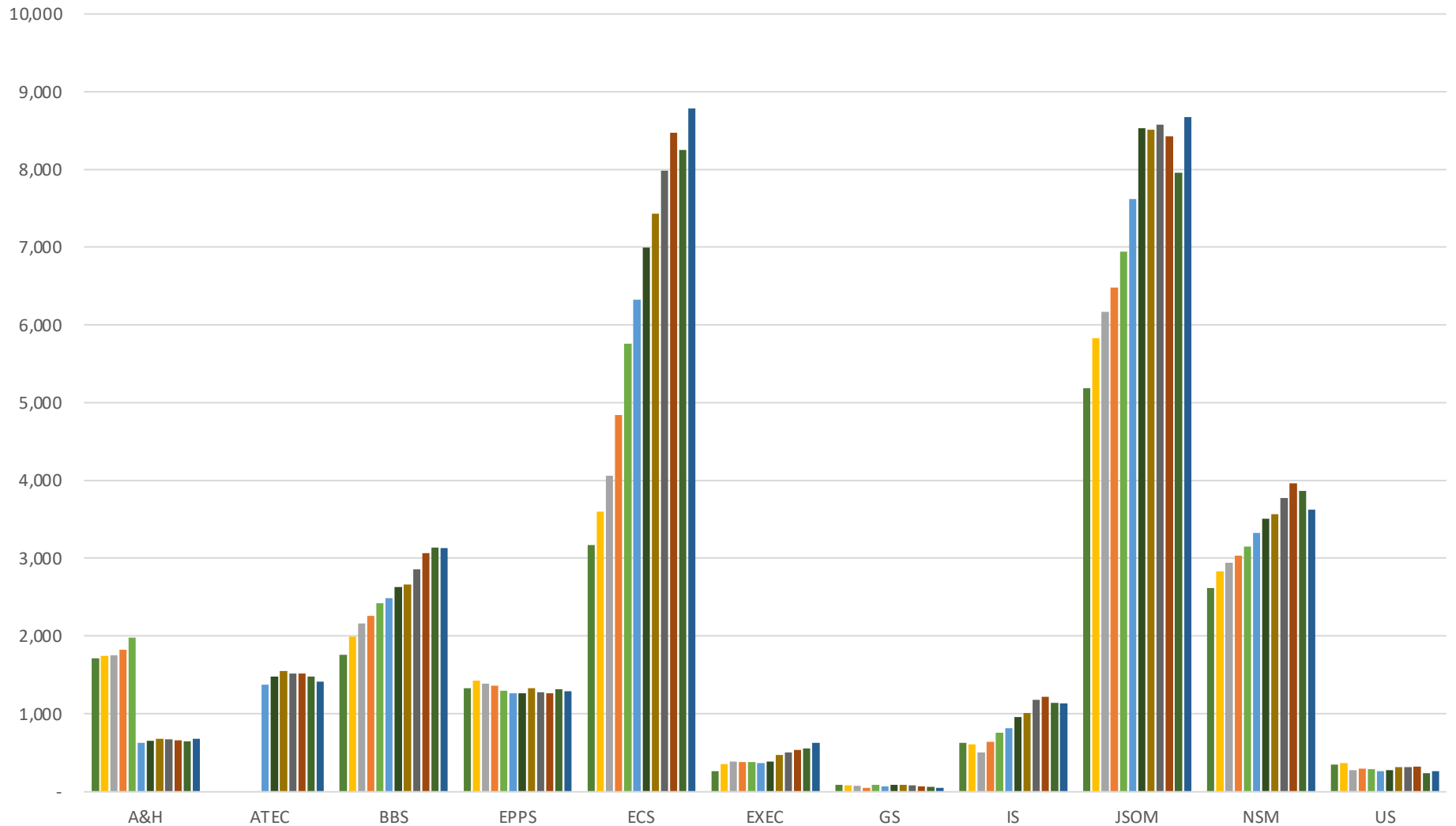
Summary

Evaluating long-term trends is essential for businesses and policy makers to better understand the needs of their local economy and to see where most growth is occurring. The same can be said for leaders in higher education, which can look at both their own enrollment and the regional labor market to better see what majors are in-demand by students and which occupations are in-demand in the wider labor market.

This report showcases the changes that have occurred both in terms of enrollment here at UT Dallas and the changing workforce landscape around our campus. This data is primarily for **2010 through 2020**, encompassing a full decade of growth, but more recent data is used when available.

Here at UTD, the **largest growth** in terms of enrollment is without a doubt concentrated in the **Erik Jonsson School of Engineering and Computer Science (ECS)** and the **Naveen Jindal School of Management (JSOM)** and their related programs. Since 2010, both schools have seen tremendous growth in enrollment, with **5,615** additional students (**+117%**) for **ECS** and **3,487** additional students (**67.2%**) in **JSOM**. In many ways this reflects similar trends that we have seen in the wider workforce, with sectors like **Financial Activities** and **Professional & Business Services**, which typically employ many of these students, seeing similar increases across the board.

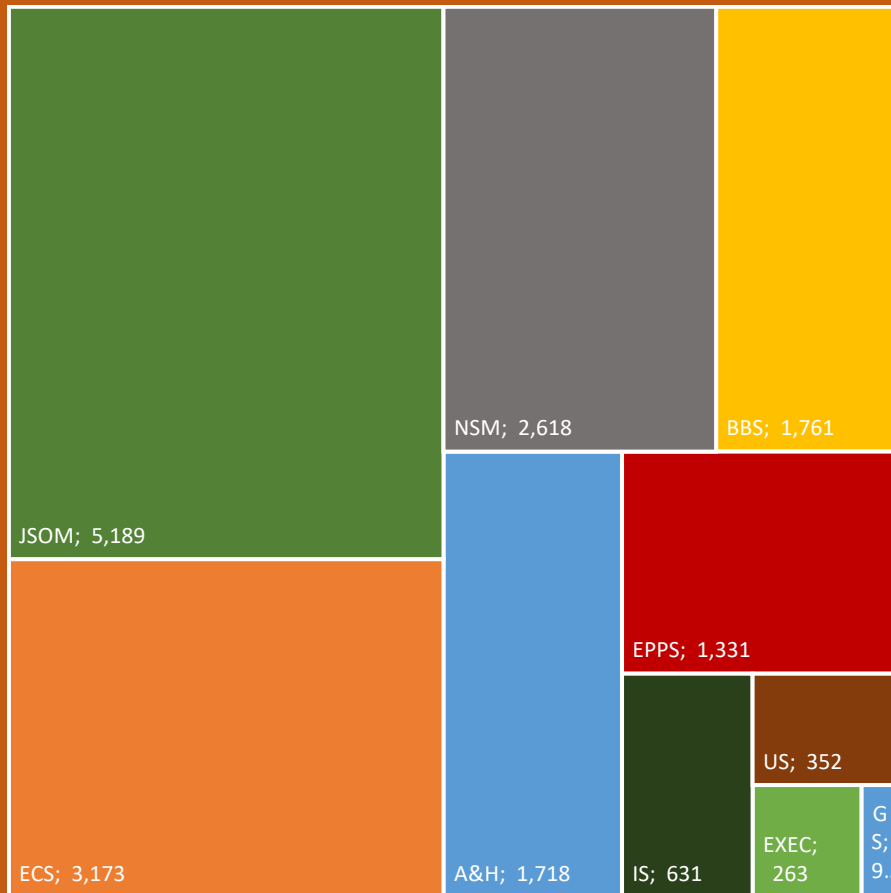
UT Dallas – 2010 to 2021



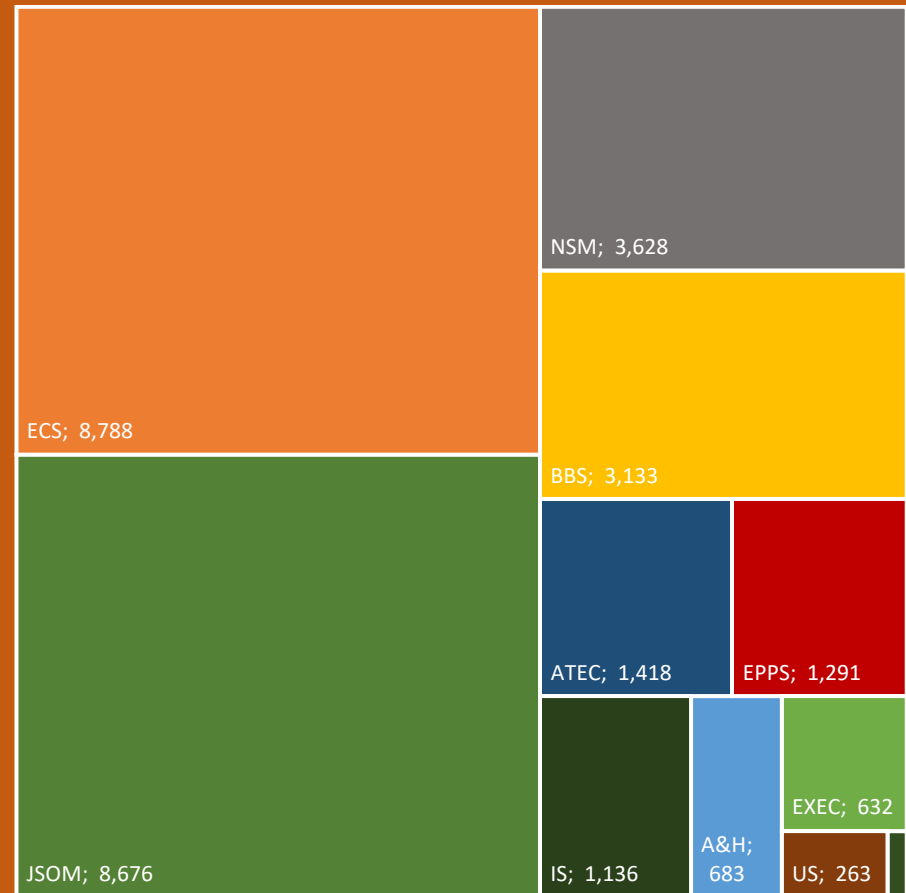
Note: For 2010 and 2011, the Management – Healthcare Enrollment figures were combined with JSOM and the Executive MBA Program was combined with the wider Executive School.

UT Dallas – 2010 to 2021

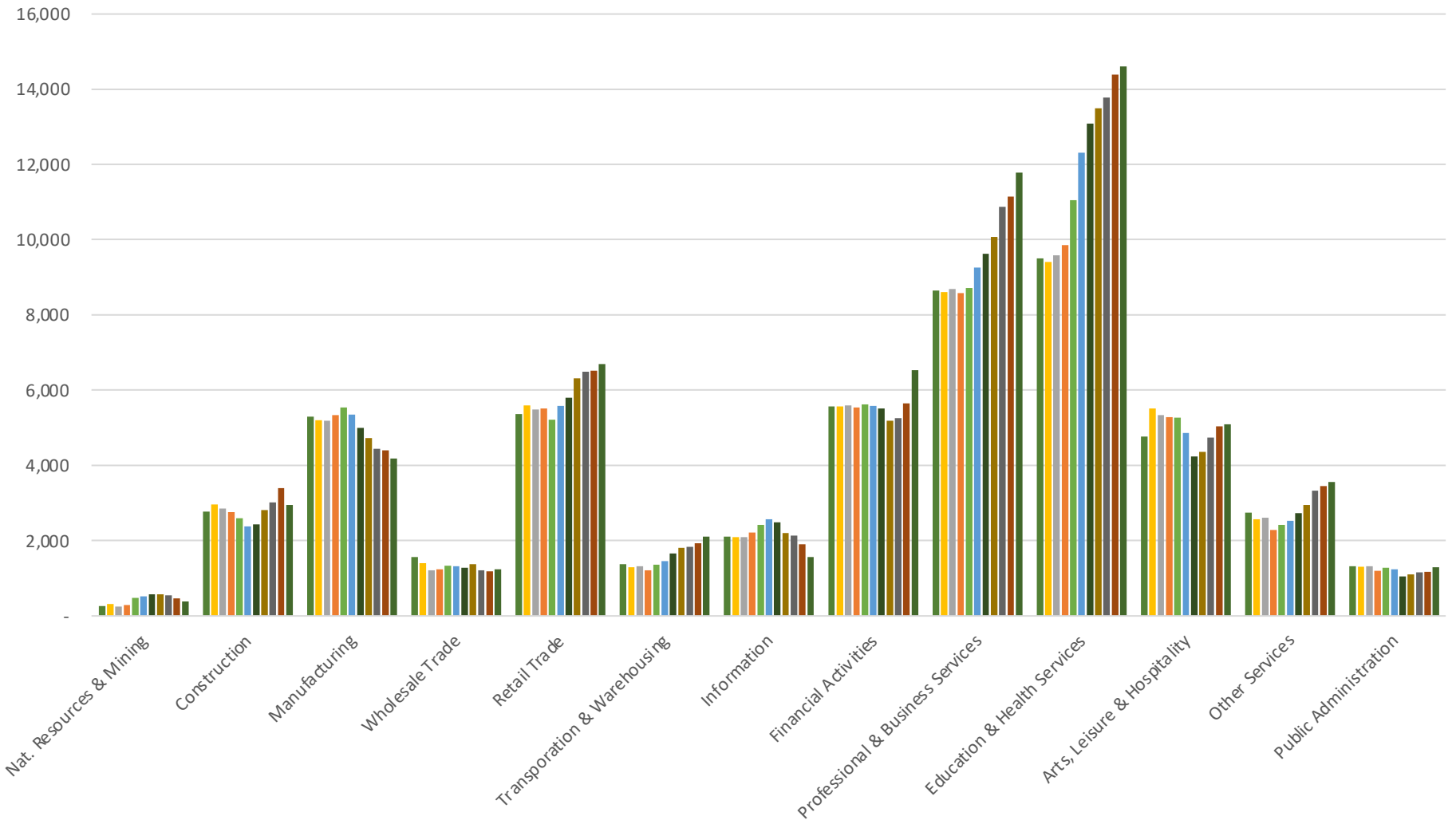
Total Enrollment (2010)
17,128 students



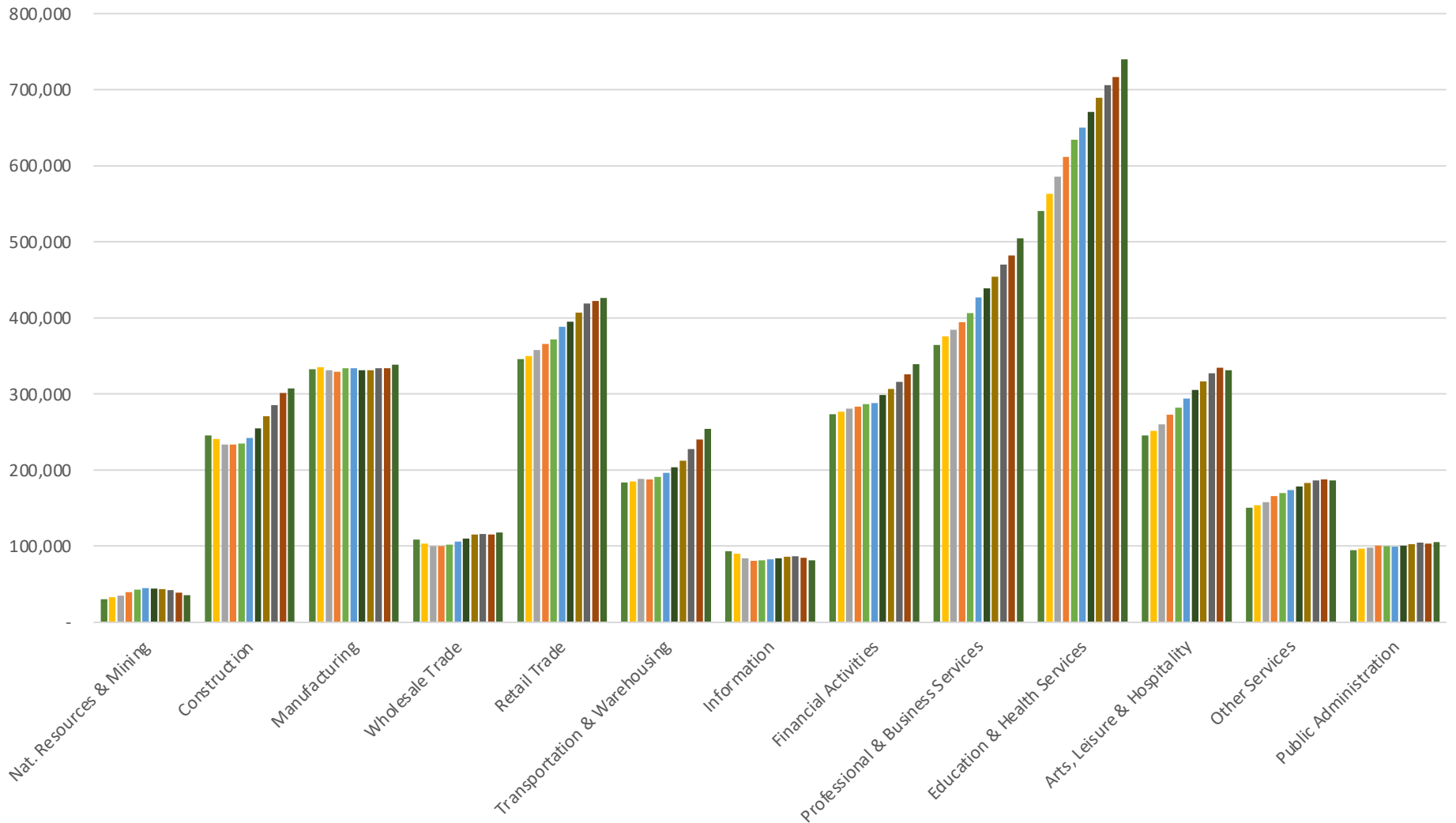
Total Enrollment (2021)
28,696 students



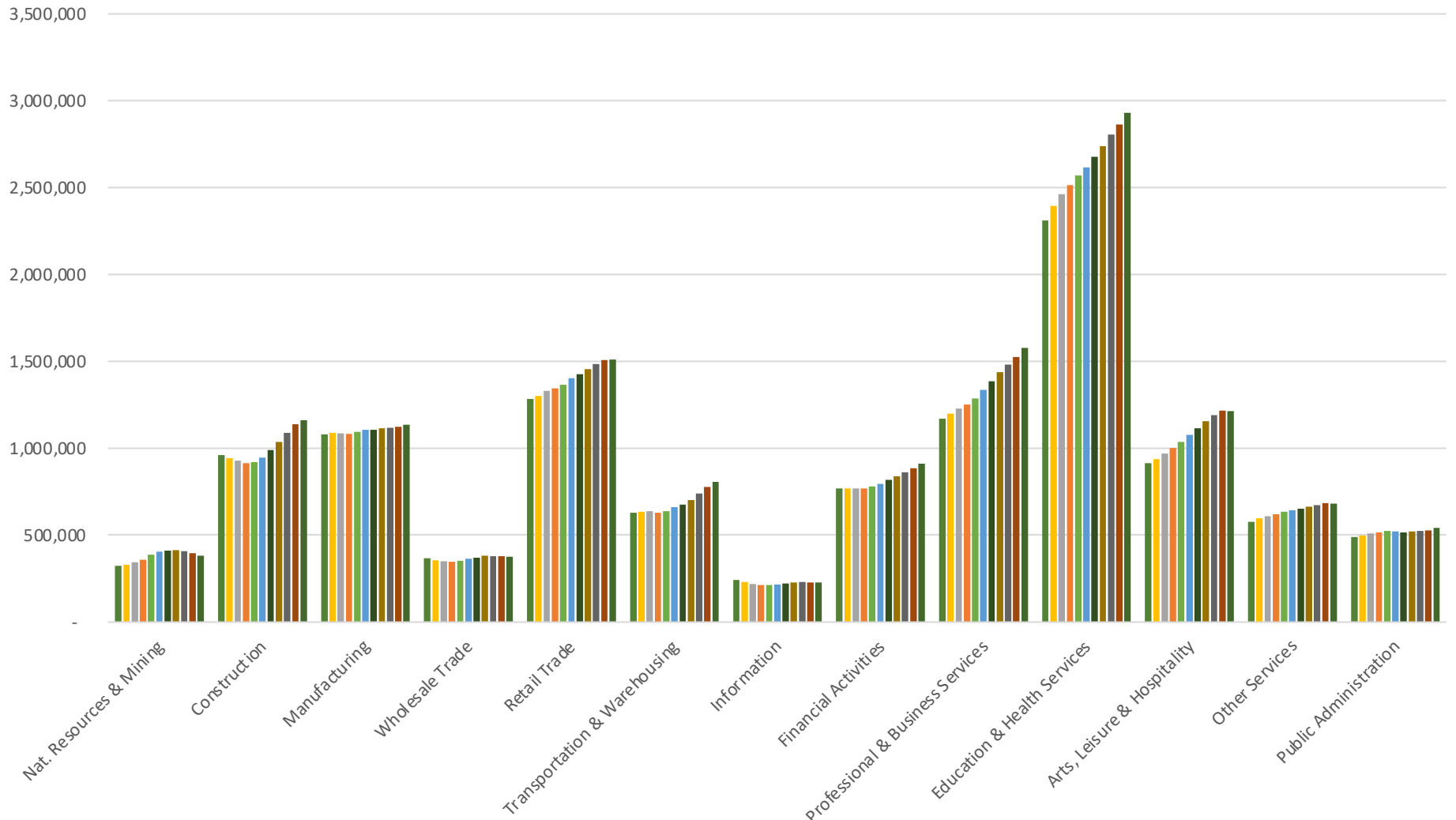
Richardson, TX – 2010 to 2020



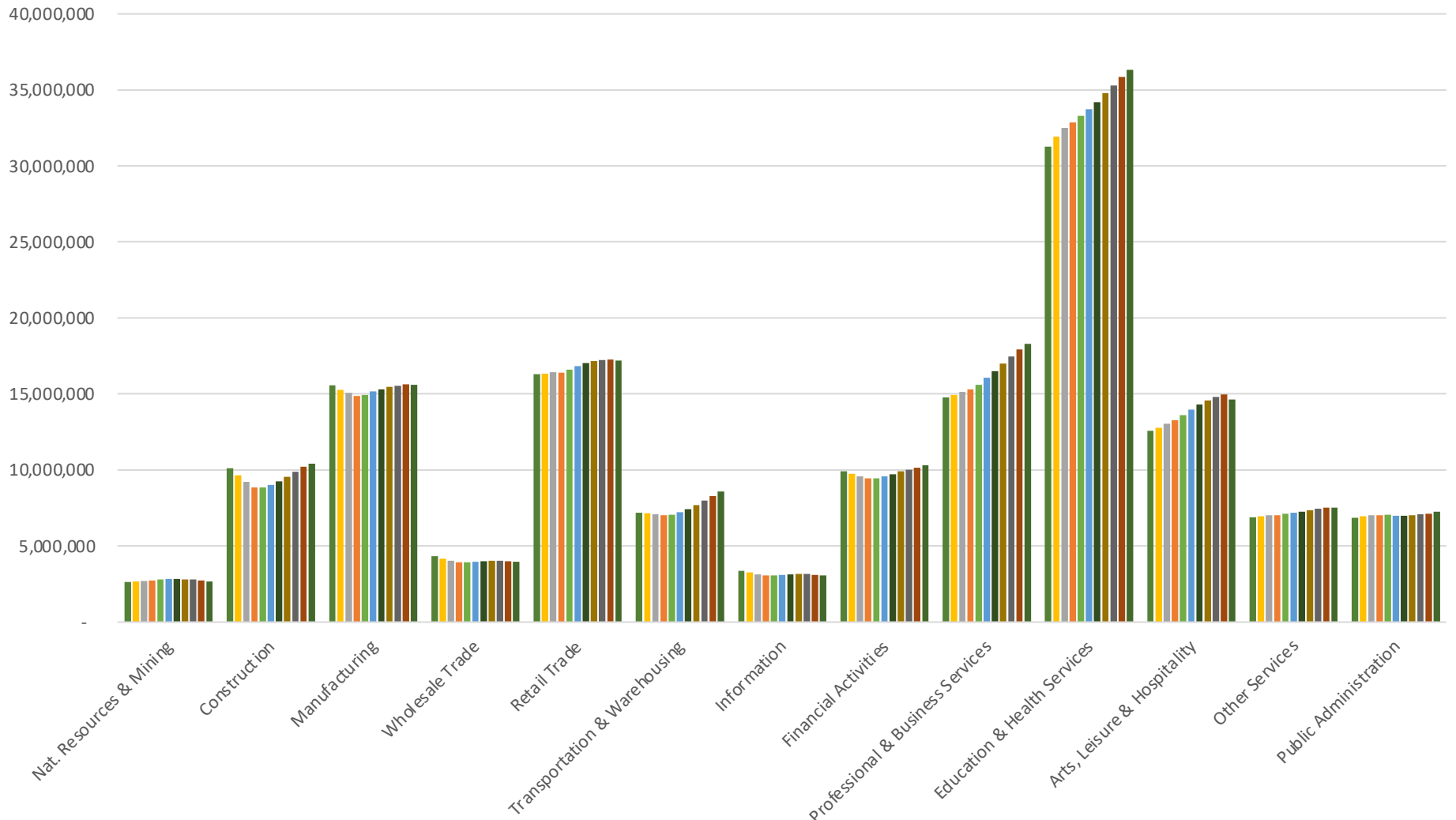
DFW Metro – 2010 to 2020



Texas – 2010 to 2020



United States – 2010 to 2020



Questions or Custom Reports?

Please contact Cody Gibbs at Cody.Gibbs@UTDallas.edu
or visit us at <https://economicengine.utdallas.edu/>

[Subscribe](#) to the Economic Development Update, released the second and fourth Wednesday of every month.