



DFW  
LABOR MARKET  
UPDATE  
**January 2026**

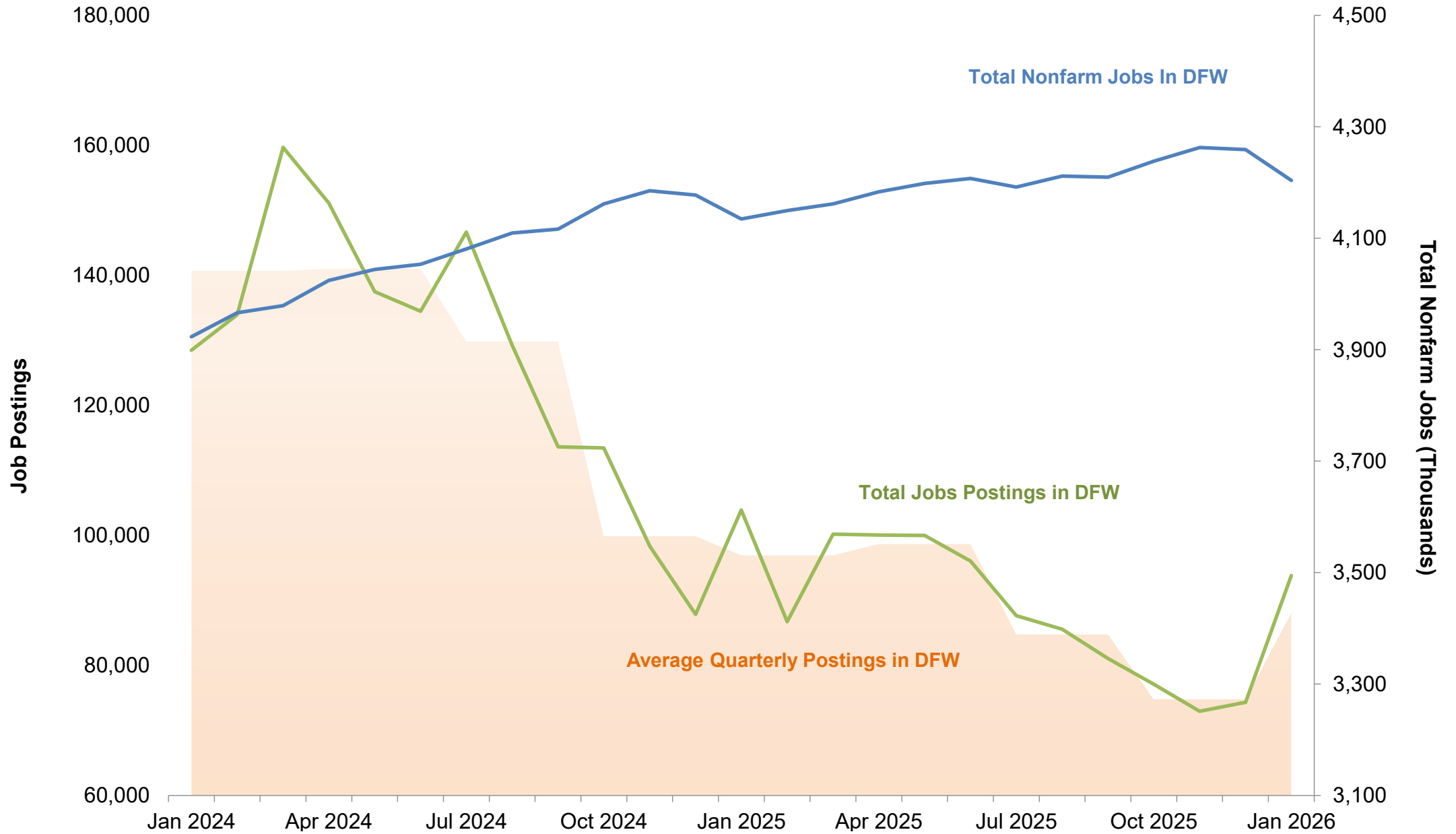
Published April 22, 2026

## SUMMARY

- From December 2025 to January 2026, the DFW labor market lost **57,300** jobs, decreasing its total workforce to **4,298,800**.
- The **mining, quarrying, oil and gas** sectors saw its employment grow by **0.2%**, while **transportation and utilities** sector experienced a decline of **2.9%**.
- Unemployment rates increased sharply for **DFW** (3.6% to 4.2%), **Texas** (3.9% to 4.5%), **U.S** experienced 4.1% to 4.7%.
- Overall job postings increased by **12.8%** in January. Postings for **sales representatives** saw the largest increase by **39.1%**, while **heavy and tractor-trailer truck drivers** experienced a **2.8%** loss.
- The fastest growing occupation was **merchandise displayers** by 83.5% increase in new postings.  
*(Note: The significant number of job postings were driven by Driveline and Lowe's.)*
- **Tax preparers** saw the largest decline in job postings at **51.6%**.
- The Consumer Price Index (CPI) increased across all regions in January by **0.25%** in **DFW**, **0.32%** in **Texas**, **0.34%** in the **Southern Region**, and **0.37%** the **U.S**.

For deeper analysis of these dynamics, see the Federal Reserve Bank of Dallas' [Texas Employment Forecast](#), [DFW Economic Indicators](#), and the Bureau of Labor Statistics' [DFW](#) and [Southwest](#) CPI releases.

# DFW – Job Postings vs. Nonfarm Jobs



\* DFW includes Collin, Dallas, Denton, Ellis, Hunt, Johnson, Kaufman, Parker, Rockwall, Tarrant, and Wise counties.  
 Source: Bureau of Labor Statistics State and Area Employment, Hours, and Earnings, April 2026. Lightcast, 2026.

# Unemployment Rates\* in DFW, Texas, and U.S.



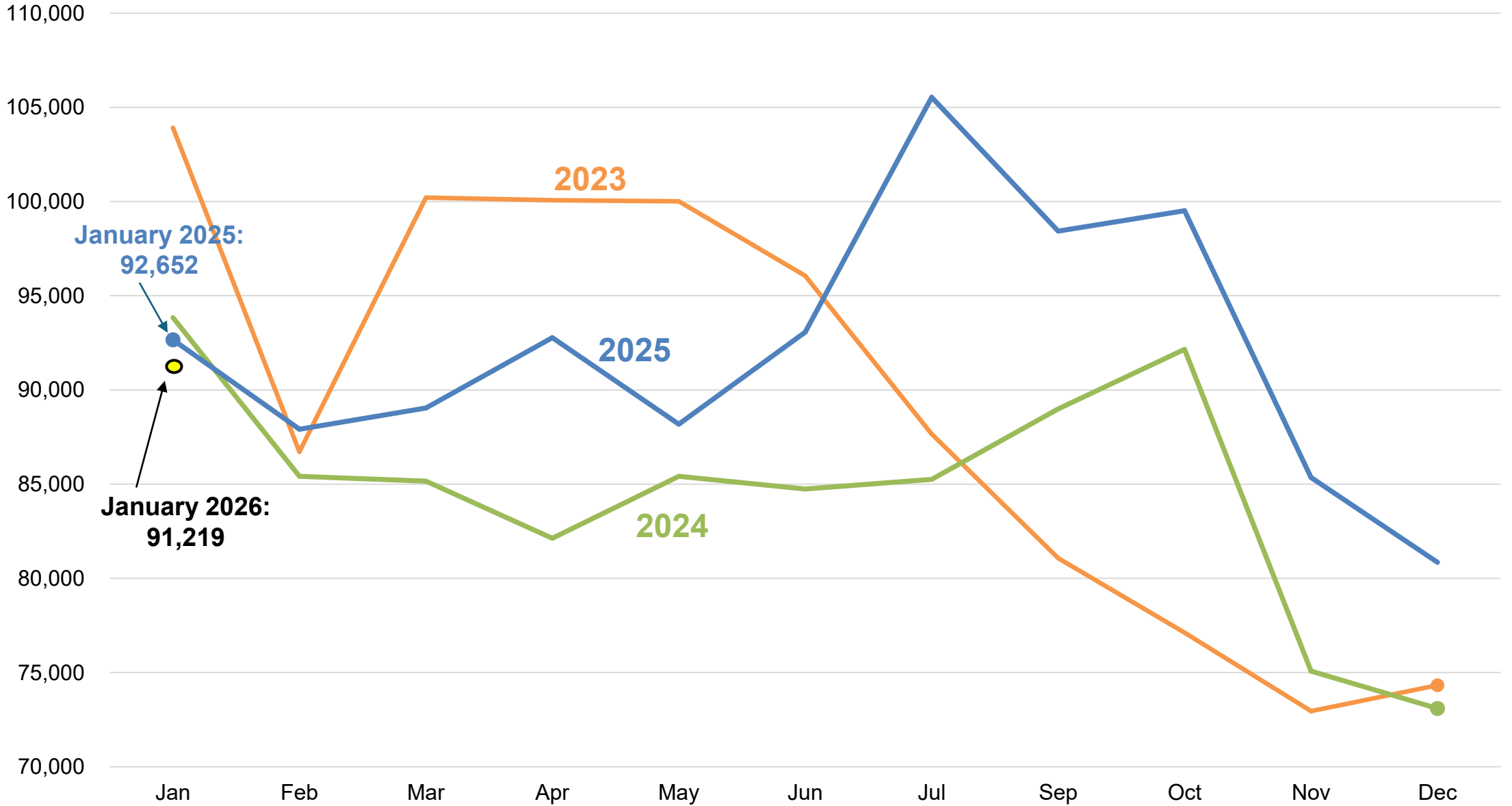
\*Not seasonally adjusted.

\*\*Data unavailable

Source: Bureau of Labor Statistics, Labor Force Statistics, April 2026

# DFW Total Job Postings Over the Years

Job Postings



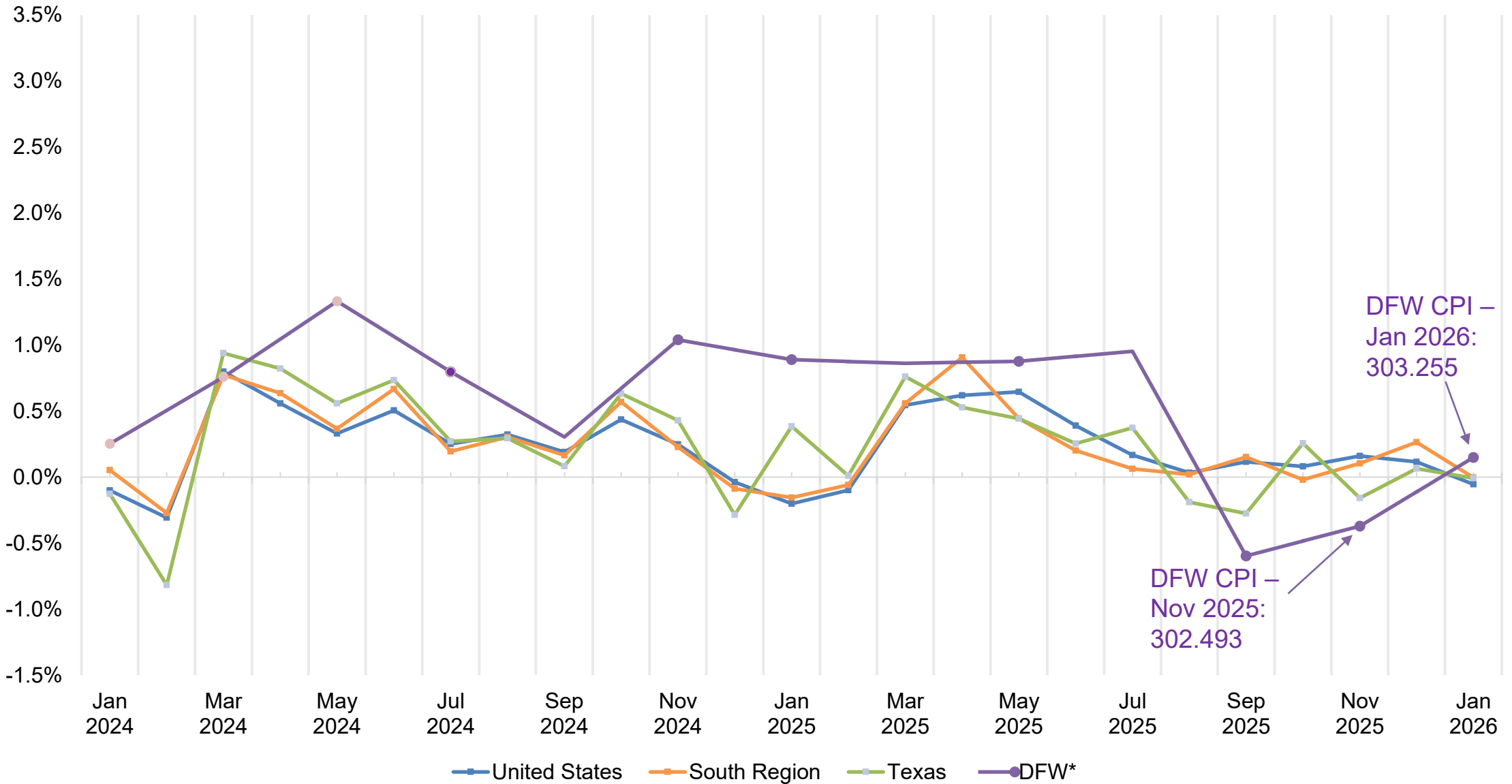
January 2026:  
91,219

January 2025:  
92,652

Source: Lightcast, 2026.

# Change in Consumer Price Index

Monthly Change in Consumer Price Index



Note: Data for DFW is reported every other month. All other figures are reported monthly.  
 October CPI data for the US, Texas and the South Region is unavailable due to the 2025 lapse in appropriations.  
 Sources: Texas data sourced from the Texas Comptroller of Public Accounts, *Key Economic Indicators*, April 2026.  
 All data for the U.S., South and DFW sourced from the Bureau of Labor Statistics, *CPI for All Urban Consumers (CPI-U)*, April 2026, and is not seasonally adjusted.

## Top Occupations by Job Postings in DFW (Yearly)

Occupation	Median Annual Earnings	Median Advertised Salary	Average Monthly Hires	Jan. 2025 Unique Job Postings	Jan. 2026 Unique Job Postings	Change, Jan. 2025 to Jan. 2026 (%)
1 Registered nurses	\$98,541	\$84,864	2,760	3,914	4,286	9.5%
2 Software developers	\$131,994	\$129,792	2,948	2,945	2,621	-11.0%
3 Retail salespersons	\$31,926	\$34,432	6,534	2,345	2,385	1.7%
4 Heavy and tractor-trailer truck drivers	\$57,253	\$80,256	3,398	1,688	1,952	15.6%
5 First-line supervisors of retail sales workers	\$46,443	\$44,416	992	1,647	1,700	3.2%
6 Computer occupations, all other	\$120,902	\$140,032	778	1,640	1,554	-5.2%
7 Customer service representatives	\$42,306	\$40,320	6,253	1,745	1,512	-13.4%
8 Sales representatives, wholesale and manufacturing, except technical and scientific products	\$63,778	\$77,696	744	1,558	1,470	-5.6%
9 Maintenance and repair workers, general	\$47,016	\$50,048	1,867	1,167	1,181	1.2%
10 General and operations managers	\$108,618	\$78,720	5,013	1,053	1,157	9.9%
<b>All occupations</b>	-	-	-	92,652	91,219	<b>-1.5%</b>

Source: Lightcast, 2026.

## Top Occupations by Job Postings in DFW (Monthly)

	Occupation	Nov. 2025 Unique Job Postings	Dec. 2025 Unique Job Postings	Jan. 2026 Unique Job Postings	Change, Dec. 2025 to Jan. 2026 (%)
1	Registered nurses	7,458	4,269	4,286	0.4%
2	Software developers	2,536	2,203	2,621	19.0%
3	Retail salespersons	1,857	1,775	2,385	34.4%
4	Heavy and tractor-trailer truck drivers	1,675	2,008	1,952	-2.8%
5	First-line supervisors of retail sales workers	1,287	1,376	1,700	23.5%
6	Computer occupations, all other	1,288	1,168	1,554	33.0%
7	Customer service representatives	1,321	1,297	1,512	16.6%
8	Sales representatives, wholesale and manufacturing, except technical and scientific products	1,277	1,057	1,470	39.1%
9	Maintenance and repair workers, general	1,028	1,001	1,181	18.0%
10	General and operations managers	1,053	933	1,157	24.0%
	<b>All occupations</b>	<b>85,347</b>	<b>80,852</b>	<b>91,219</b>	<b>12.8%</b>

Source: Lightcast, 2026.

## Positive Change in Demand by Jobs Postings in DFW

	Occupation	Median Annual Earnings	Median Advertised Salary	Average Monthly Hires	Dec. 2025 Unique Job Postings	Jan. 2026 Unique Job Postings	Month-over-month Change
1	Respiratory Therapists	\$82,767	\$85,248	117	255	450	76.5%
2	Merchandise Displayers and Window Trimmers	\$37,187	\$35,968	255	321	589	83.5%
3	Human Resources Specialists	\$65,051	\$64,896	2,221	513	679	32.4%
4	Industrial Engineers	\$105,276	\$128,384	314	330	489	48.2%
5	Sales Managers	\$137,665	\$107,392	1,012	847	1106	30.6%
6	First-Line Supervisors of Office and Administrative Support Workers	\$69,589	\$59,264	1,633	698	863	23.6%
7	Marketing Managers	\$147,987	\$135,936	823	581	754	29.8%
8	Sales Representatives, Wholesale and Manufacturing, Technical and Scientific Products	\$84,124	\$76,160	426	596	826	38.6%
9	Stockers and Order Fillers	\$36,497	\$31,872	6,174	500	664	32.8%
10	Secretaries and Administrative Assistants, Except Legal, Medical, and Executive	\$46,297	\$42,624	1,686	549	733	33.5%
	<b>All occupations</b>	-	-	-	<b>80,852</b>	<b>91,219</b>	<b>12.8%</b>

\*The significant percentage gain is largely attributable to the low number from the prior month. Source: Lightcast, 2026.

## Negative Change in Demand by Jobs Postings in DFW

Occupation	Median Annual Earnings	Median Advertised Salary	Average Monthly Hires	Dec. 2025 Unique Job Postings	Jan. 2026 Unique Job Postings	Month-over-month Change
1 Tax Preparers	\$66,623	\$87,424	78	246	119	-51.6%
2 First-Line Supervisors of Food Preparation and Serving Workers	\$38,202	\$37,504	1,489	756	483	-36.1%
3 Occupational Therapists	\$102,231	\$109,824	152	321	211	-34.3%
4 Special Education Teachers, All Other	\$64,964	\$68,992	31	549	397	-27.7%
5 Industrial Truck and Tractor Operators	\$47,082	\$39,552	2,434	422	331	-21.6%
6 Speech-Language Pathologists	\$86,352	\$104,192	208	393	318	-19.1%
7 Accountants and Auditors	\$83,499	\$85,248	1,458	830	707	-14.8%
8 Fast Food and Counter Workers	\$26,476	\$31,104	17,413	799	690	-13.6%
9 Laborers and Freight, Stock, and Material Movers, Hand	\$38,379	\$37,504	7,393	1173	1032	-12.0%
10 Financial Managers	\$165,892	\$136,960	736	1128	1046	-7.3%
<b>All occupations</b>	-	-	-	<b>80,852</b>	<b>91,219</b>	<b>12.8%</b>

Source: Lightcast, 2026.

## DFW Employment by Industry

Industry	Jan. 2025 Employment	Nov. 2025 Employment	Dec. 2025 Employment	Jan. 2026 Employment	Change, Jan. 2025 to Jan. 2026 (%)	Change, Dec. 2025 to Jan. 2026 (%)
Mining, quarrying, and oil and gas extraction	109,500	112,400	111,500	111,700	2.0%	0.2%
Construction	145,300	154,000	154,200	154,200	6.1%	0.0%
Manufacturing	313,000	311,900	313,000	310,900	-0.7%	-0.7%
Wholesale and retail trade	623,700	630,500	638,600	621,100	-0.4%	-2.7%
Transportation and utilities	269,600	276,400	278,100	270,100	0.2%	-2.9%
Information	87,100	87,100	87,600	85,700	-1.6%	-2.2%
Financial activities	386,300	391,900	393,500	388,000	0.4%	-1.4%
Professional and business services	766,600	786,100	785,900	779,100	1.6%	-0.9%
Education and health services	516,300	529,500	527,100	523,000	1.3%	-0.8%
Leisure and hospitality	417,800	428,600	427,100	424,200	1.5%	-0.7%
Other services	140,200	143,000	142,700	141,600	1.0%	-0.8%
Government	481,500	496,600	496,800	489,200	1.6%	-1.5%
<b>Total nonfarm</b>	<b>4,256,900</b>	<b>4,348,000</b>	<b>4,356,100</b>	<b>4,298,800</b>	<b>1.0%</b>	<b>-1.3%</b>

Numbers may not sum due to rounding. Employment is not seasonally adjusted.

Source: Bureau of Labor Statistics State and Area Employment, Hours, and Earnings, and Current Employment Statistics, April 2026.

## DFW vs. U.S. Employment by Industry

Industry	DFW Jan. 2026 Employment	DFW Jan. 2026 Employment Share (%)	DFW Employment Change, Jan. 2025 to Jan. 2026 (%)	U.S. Jan. 2026 Employment	U.S. Jan. 2026 Employment Share (%)	U.S. Employment Change, Jan. 2025 to Jan. 2026 (%)
Mining, quarrying, and oil and gas extraction	111,700	2.6%	2.0%	595,000	0.4%	-3.3%
Construction	154,200	3.6%	6.1%	8,003,000	5.1%	0.8%
Manufacturing	310,900	7.2%	-0.7%	12,505,000	8.0%	-0.7%
Wholesale and retail trade	621,100	14.4%	-0.4%	21,382,900	13.6%	-0.4%
Transportation and utilities	270,100	6.3%	0.2%	7,222,900	4.6%	-1.0%
Information	85,700	2.0%	-1.6%	2,782,000	1.8%	-2.4%
Financial activities	388,000	9.0%	0.4%	9,100,000	5.8%	-0.5%
Professional and business services	779,100	18.1%	1.6%	22,040,000	14.1%	-0.2%
Education and health services	523,000	12.2%	1.3%	27,647,000	17.6%	2.9%
Leisure and hospitality	424,200	9.9%	1.5%	16,252,000	10.4%	0.7%
Other services	141,600	3.3%	1.0%	5,957,000	3.8%	0.9%
Government	489,200	11.4%	1.6%	23,241,000	14.8%	-1.0%
<b>Total nonfarm</b>	<b>4,298,800</b>	<b>100.0%</b>	<b>1.0%</b>	<b>156,728,000</b>	<b>100.0%</b>	<b>0.2%</b>

Numbers may not sum due to rounding. Employment is not seasonally adjusted.

Source: Bureau of Labor Statistics State and Area Employment, Hours, and Earnings, and Current Employment Statistics, April 2026.

***An Economic Engine  
for the Region***

**Web**

[economicengine.utdallas.edu](http://economicengine.utdallas.edu)

**Email**

[economicengine@utdallas.edu](mailto:economicengine@utdallas.edu)

**Newsletter**

[economicengine.utdallas.edu/tools/subscribe](http://economicengine.utdallas.edu/tools/subscribe)