



DFW  
LABOR MARKET  
UPDATE  
**December 2025**

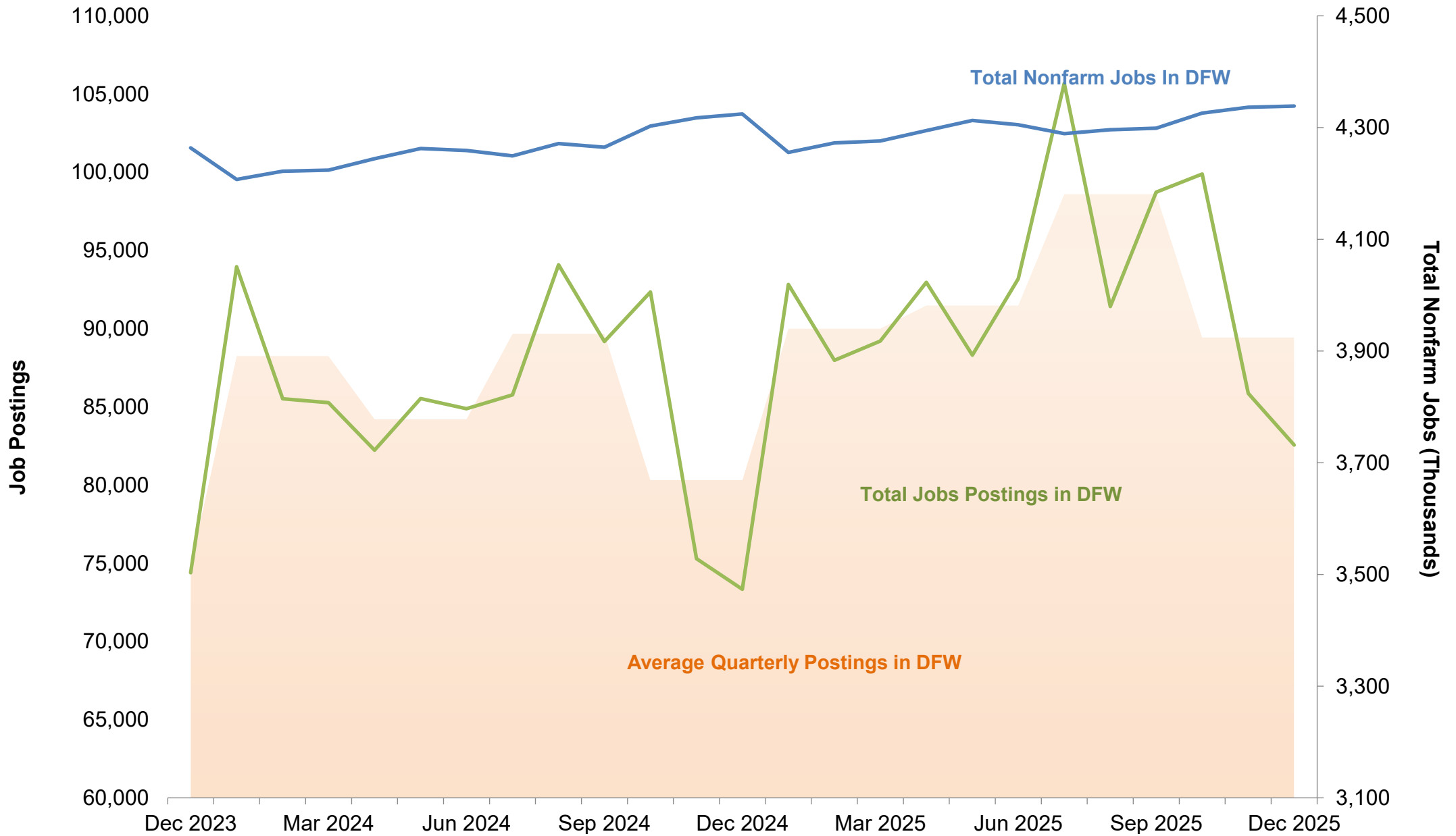
Published February 11, 2026

## SUMMARY

- From November to December, the DFW labor market gained **2,100** jobs, increasing its total workforce to **4,338,500**.
- The **information** sector saw its employment grow by **2.7%**, while **construction** sector experienced a decline of **1%**.
- The **Texas** unemployment rate declined from 4.2% to **3.9%**, and the **U.S.** rate declined moderately from 4.3% to **4.1%**. December data is unavailable for DFW.
- Overall job postings declined by **3.8%** in December. Postings for **heavy and tractor-trailer truck drivers** saw the largest increase by **20.2%**, while **registered nurses** experienced a **42.9%** loss.
- The fastest growing occupation was **veterinarians** with a 93.4% increase in new postings. *(Note: The significant number of job postings were driven by Lap of Love.)*
- **Counselors** saw the largest decline in job postings at **54.2%**.
- The Consumer Price Index (CPI) for **DFW** will not be released for December. However, inflation decreased in **Texas** by **0.259%** and in the **U.S.** by **0.02%** while it increased in the **Southern Region** by **0.02%**.

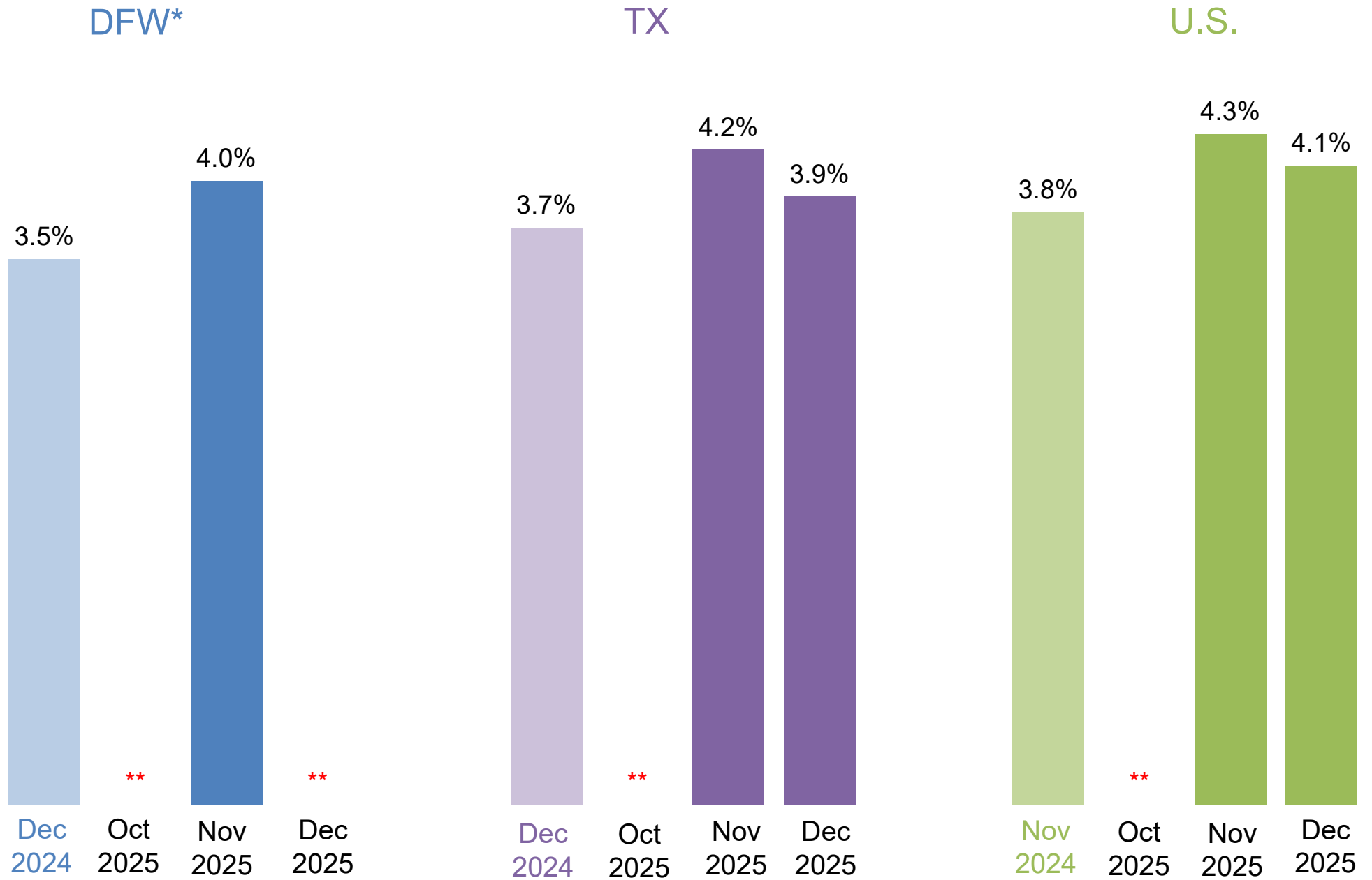
For deeper analysis of these dynamics, see the Federal Reserve Bank of Dallas' [Texas Employment Forecast](#), [DFW Economic Indicators](#), and the Bureau of Labor Statistics' [DFW](#) and [Southwest](#) CPI releases.

# DFW – Job Postings vs. Nonfarm Jobs



\* DFW includes Collin, Dallas, Denton, Ellis, Hunt, Johnson, Kaufman, Parker, Rockwall, Tarrant, and Wise counties.  
 Source: Bureau of Labor Statistics State and Area Employment, Hours, and Earnings, February 2026. Lightcast, 2026.

# Unemployment Rates\* in DFW, Texas, and U.S.



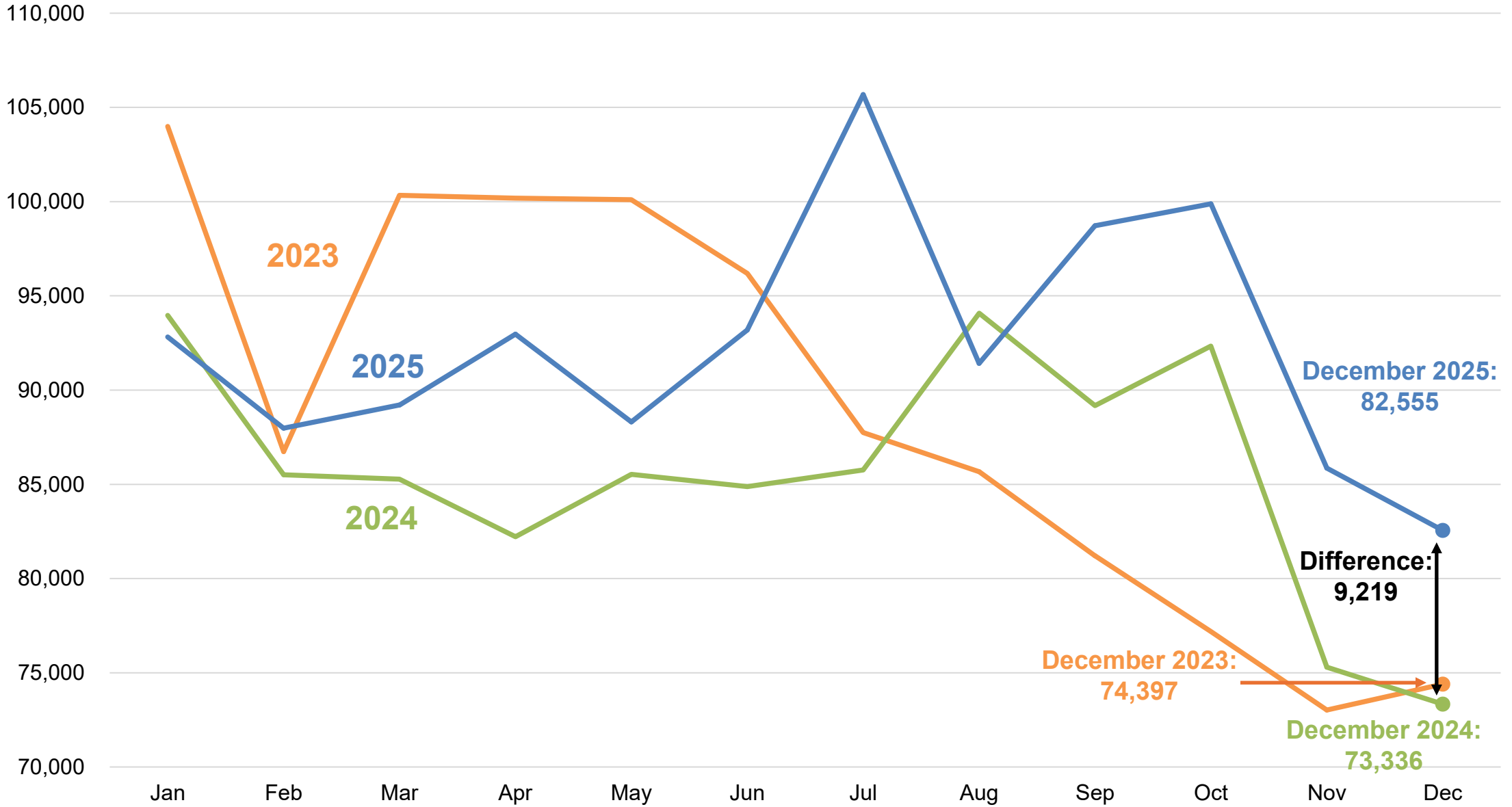
\*Not seasonally adjusted.

\*\*Data unavailable

Source: Bureau of Labor Statistics, Labor Force Statistics, February 2026

# DFW Total Job Postings Over the Years

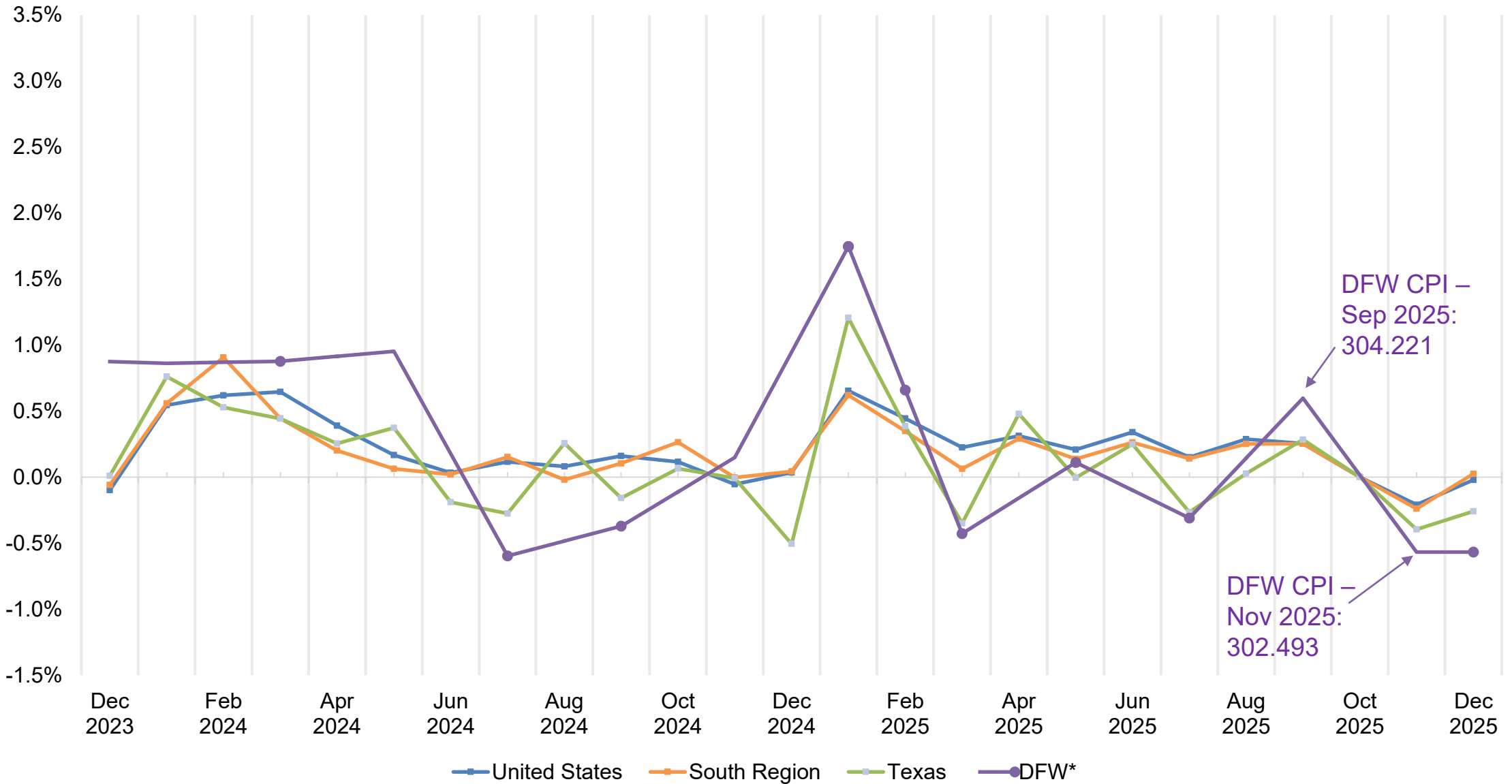
Job Postings



Source: Lightcast, 2026.

# Change in Consumer Price Index

Monthly Change in Consumer Price Index



DFW CPI –  
Sep 2025:  
304.221

DFW CPI –  
Nov 2025:  
302.493

Note: Data for DFW is reported every other month. All other figures are reported monthly.  
 October CPI data for the US, Texas and the South Region is unavailable due to the 2025 lapse in appropriations.  
 Sources: Texas data sourced from the Texas Comptroller of Public Accounts, *Key Economic Indicators*, February 2026.  
 All data for the U.S., South and DFW sourced from the Bureau of Labor Statistics, *CPI for All Urban Consumers (CPI-U)*, February 2026, and is not seasonally adjusted.

## Top Occupations by Job Postings in DFW (Yearly)

Occupation	Median Annual Earnings	Median Advertised Salary	Average Monthly Hires	Dec. 2024 Unique Job Postings	Dec. 2025 Unique Job Postings	Change, Dec. 2024 to Dec. 2025 (%)
1 Registered nurses	\$98,541	\$86,400	2,760	3,359	4,270	27.1%
2 Software developers	\$131,994	\$132,864	2,948	2,069	2,408	16.4%
3 Heavy and tractor-trailer truck drivers	\$57,253	\$78,208	3,398	1,466	2,050	39.8%
4 Retail salespersons	\$31,926	\$34,432	6,534	2,046	1,809	-11.6%
5 Computer occupations, all other	\$120,902	\$136,064	778	1,245	1,434	15.2%
6 Customer service representatives	\$42,306	\$40,320	6,253	1,307	1,341	2.6%
7 Laborers and freight, stock, and material movers, hand	\$38,379	\$37,504	7,393	788	1,186	50.5%
8 First-line supervisors of retail sales workers	\$46,443	\$45,952	992	1,313	1,163	-11.4%
9 Financial managers	\$165,892	\$131,840	736	861	1,143	32.8%
10 Sales representatives, wholesale and manufacturing, except technical and scientific products	\$63,778	\$78,720	744	1,171	1,070	-8.6%
<b>All occupations</b>	-	-	-	73,320	82,555	<b>12.6%</b>

Source: Lightcast, 2026.

## Top Occupations by Job Postings in DFW (Monthly)

	Occupation	Oct. 2025 Unique Job Postings	Nov. 2025 Unique Job Postings	Dec. 2025 Unique Job Postings	Change, Nov. 2025 to Dec. 2025 (%)
1	Registered nurses	5,980	7,475	4,270	-42.9%
2	Software developers	3,181	2,492	2,408	-3.4%
3	Heavy and tractor-trailer truck drivers	1,827	1,705	2,050	20.2%
4	Retail salespersons	2,527	1,865	1,809	-3.0%
5	Computer occupations, all other	1,735	1,407	1,434	1.9%
6	Customer service representatives	1,629	1,350	1,341	-0.7%
7	Laborers and freight, stock, and material movers, hand	1,350	1,054	1,186	12.5%
8	First-line supervisors of retail sales workers	1,533	1,107	1,163	5.1%
9	Financial managers	1,094	1,010	1,143	13.2%
10	Sales representatives, wholesale and manufacturing, except technical and scientific products	1,439	1,295	1,070	-17.4%
	<b>All occupations</b>	<b>99,866</b>	<b>85,860</b>	<b>82,555</b>	<b>-3.8%</b>

Source: Lightcast, 2026.

## Positive Change in Demand by Jobs Postings in DFW

	Occupation	Median Annual Earnings	Median Advertised Salary	Average Monthly Hires	Nov. 2025 Unique Job Postings	Dec. 2025 Unique Job Postings	Month-over-month Change
1	Special Education Teachers, All Other	\$64,964	\$71,552	31	387	564	45.7%
2	Veterinarians	\$124,921	\$150,016	65	91	176	93.4%
3	Personal Financial Advisors	\$92,175	\$100,096	161	198	322	62.6%
4	Computer Systems Analysts	\$116,401	\$100,608	663	234	385	64.5%
5	Software Quality Assurance Analysts and Testers	\$103,207	\$105,216	375	255	366	43.5%
6	First-Line Supervisors of Food Preparation and Serving Workers	\$38,202	\$38,528	1,489	466	739	58.6%
7	Industrial Truck and Tractor Operators	\$47,082	\$39,552	2,434	302	424	40.4%
8	Accountants and Auditors	\$83,499	\$85,248	1,458	675	833	23.4%
9	Dining Room and Cafeteria Attendants and Bartender Helpers	\$26,712	\$31,168	1,268	303	384	26.7%
10	Fast Food and Counter Workers	\$26,476	\$31,104	17,413	600	724	20.7%
	<b>All occupations</b>	-	-	-	<b>85,860</b>	<b>82,555</b>	<b>-3.8%</b>

\*The significant percentage gain is largely attributable to the low number from the prior month.  
Source: Lightcast, 2026.

## Negative Change in Demand by Jobs Postings in DFW

Occupation	Median Annual Earnings	Median Advertised Salary	Average Monthly Hires	Nov. 2025 Unique Job Postings	Dec. 2025 Unique Job Postings	Month-over-month Change
1 Counselors, All Other	\$58,693	\$95,488	55	166	76	-54.2%
2 Magnetic Resonance Imaging Technologists	\$98,833	\$114,432	15	273	129	-52.7%
3 Web Developers	\$98,192	\$127,744	93	177	89	-49.7%
4 Licensed Practical and Licensed Vocational Nurses	\$62,172	\$62,208	901	340	187	-45.0%
5 Cardiovascular Technologists and Technicians	\$48,936	\$125,696	34	365	216	-40.8%
6 Radiologic Technologists and Technicians	\$79,919	\$108,800	138	763	486	-36.3%
7 Respiratory Therapists	\$82,767	\$79,616	117	384	254	-33.9%
8 Driver/Sales Workers	\$39,491	\$38,528	416	484	369	-23.8%
9 Marketing Managers	\$147,987	\$137,984	823	648	554	-14.5%
10 General and Operations Managers	\$108,618	\$82,816	5,013	1,057	938	-11.3%
<b>All occupations</b>	-	-	-	<b>85,860</b>	<b>82,555</b>	<b>-3.8%</b>

Source: Lightcast, 2026.

## DFW Employment by Industry

Industry	Dec. 2024 Employment	Oct. 2025 Employment	Nov. 2025 Employment	Dec. 2025 Employment	Change, Dec. 2024 to Dec. 2025 (%)	Change, Nov. 2025 to Dec. 2025 (%)
Mining, quarrying, and oil and gas extraction	108,600	114,400	113,500	112,900	4.0%	-0.5%
Construction	146,400	148,600	148,500	147,000	0.4%	-1.0%
Manufacturing	311,900	307,500	306,600	307,600	-1.4%	0.3%
Wholesale and retail trade	648,000	640,100	645,100	653,500	0.8%	1.3%
Transportation and utilities	274,200	262,900	270,800	272,200	-0.7%	0.5%
Information	89,800	88,600	89,400	91,800	2.2%	2.7%
Financial activities	387,600	383,100	382,000	384,400	-0.8%	0.6%
Professional and business services	783,800	772,700	769,200	762,100	-2.8%	-0.9%
Education and health services	514,400	530,300	532,700	530,900	3.2%	-0.3%
Leisure and hospitality	428,200	435,900	435,000	432,300	1.0%	-0.6%
Other services	139,200	142,900	142,800	142,400	2.3%	-0.3%
Government	492,200	498,900	500,800	501,400	1.9%	0.1%
<b>Total nonfarm</b>	<b>4,324,300</b>	<b>4,325,900</b>	<b>4,336,400</b>	<b>4,338,500</b>	<b>0.3%</b>	<b>0.05%</b>

Numbers may not sum due to rounding. Employment is not seasonally adjusted.

Source: Bureau of Labor Statistics State and Area Employment, Hours, and Earnings, and Current Employment Statistics, February 2026.

## DFW vs. U.S. Employment by Industry

Industry	DFW Dec. 2025 Employment	DFW Dec. 2025 Employment Share (%)	DFW Employment Change, Dec. 2024 to Dec. 2025 (%)	U.S. Dec. 2025 Employment	U.S. Dec. 2025 Employment Share (%)	U.S. Employment Change, Dec. 2024 to Dec. 2025 (%)
Mining, quarrying, and oil and gas extraction	112,900	2.6%	4.0%	606,000	0.4%	-2.7%
Construction	147,000	3.4%	0.4%	8,231,000	5.1%	0.1%
Manufacturing	307,600	7.1%	-1.4%	12,711,000	7.9%	-0.6%
Wholesale and retail trade	653,500	15.1%	0.8%	22,128,900	13.8%	-0.1%
Transportation and utilities	272,200	6.3%	-0.7%	7,577,700	4.7%	-0.9%
Information	91,800	2.1%	2.2%	2,932,000	1.8%	-1.1%
Financial activities	384,400	8.9%	-0.8%	9,274,000	5.8%	0.4%
Professional and business services	762,100	17.6%	-2.8%	22,605,000	14.1%	-0.4%
Education and health services	530,900	12.2%	3.2%	27,793,000	17.3%	2.6%
Leisure and hospitality	432,300	10.0%	1.0%	16,861,000	10.5%	1.1%
Other services	142,400	3.3%	2.3%	6,042,000	3.8%	1.0%
Government	501,400	11.6%	1.9%	23,686,000	14.8%	-0.7%
<b>Total nonfarm</b>	<b>4,338,500</b>	<b>100.0%</b>	<b>0.3%</b>	<b>160,448,000</b>	<b>100.0%</b>	<b>0.3%</b>

Numbers may not sum due to rounding. Employment is not seasonally adjusted.

Source: Bureau of Labor Statistics State and Area Employment, Hours, and Earnings, and Current Employment Statistics, February 2026.

# *An Economic Engine for the Region*

## **Web**

[economicengine.utdallas.edu](http://economicengine.utdallas.edu)

## **Email**

[economicengine@utdallas.edu](mailto:economicengine@utdallas.edu)

## **Newsletter**

[economicengine.utdallas.edu/tools/subscribe](http://economicengine.utdallas.edu/tools/subscribe)