



DFW  
LABOR MARKET  
UPDATE  
**November 2025**

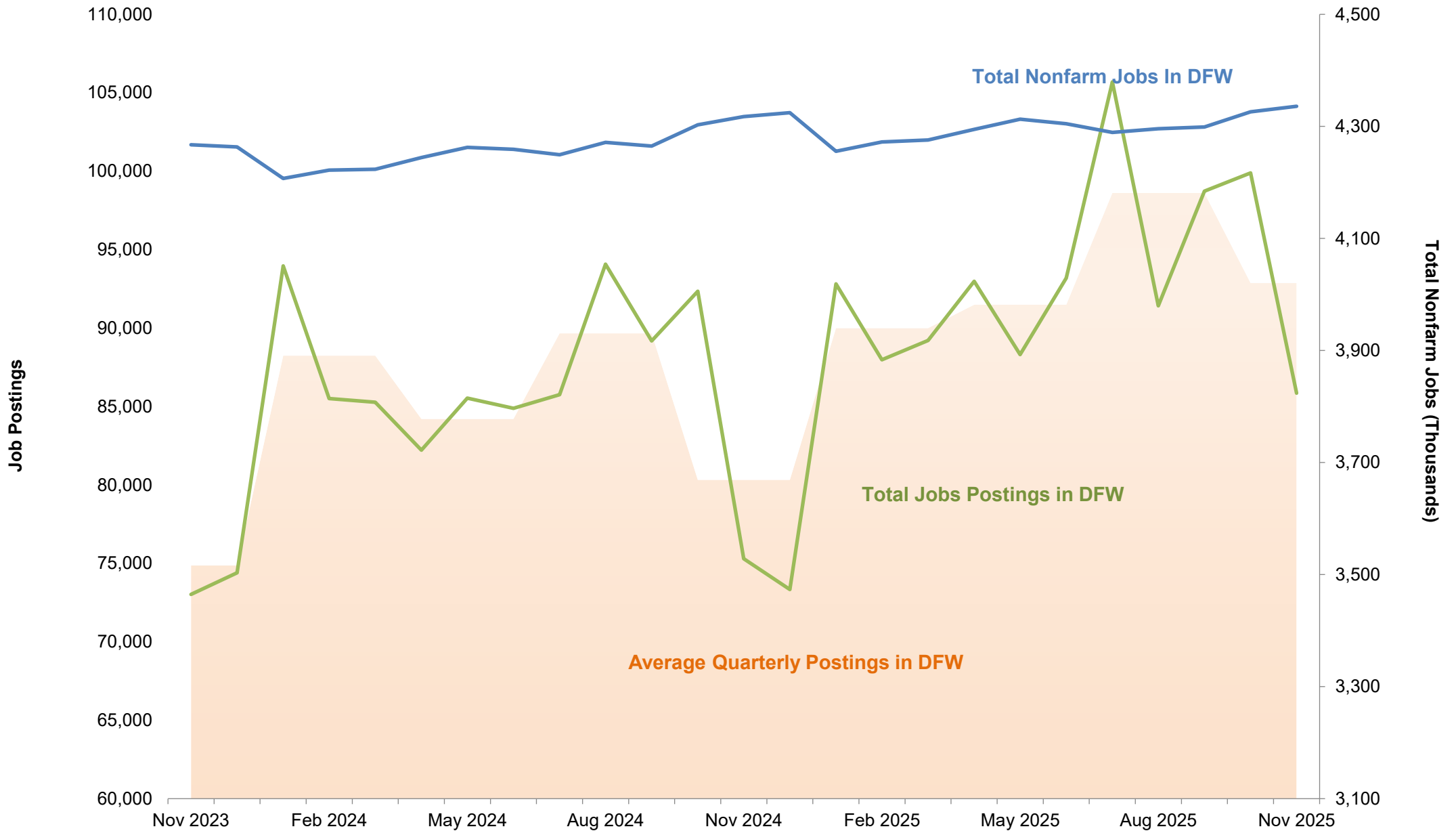
Published January 28, 2026

## SUMMARY

- From October to November, the DFW labor market gained **10,000** jobs, increasing its total workforce to **4,335,900**.
- The **transportation & utilities** sector saw its employment grow by **3.1%**, while **professional and business services** experienced a decline of **0.5%**.
- Unemployment rates declined moderately across the regions from September to November: **DFW** decreased from 4.4% to 4.0%, **Texas** decreased from 4.4% to 4.2%, and **U.S.** maintained at **4.3%**. *(October data unavailable due to the 2025 lapse in appropriations.)*
- Overall job postings declined by **14.1%** in November. Postings for **registered nurses** saw the largest increase by **25%**, while **first-line supervisors of retail sales workers** experienced a **27.8%** loss.
- The fastest growing occupation was **dentists, all other specialists** with a 368.8% increase in new postings. *(Note: The significant number of job postings were driven by Northeast Endodontics, Cypress Endodontics PLLC and Ideal Dental)*
- **Sales and related workers** saw the largest decline in job postings at **55%**.
- The Consumer Price Index (CPI) decreased across all regions from September to November by **0.57%** in **DFW**, **0.396%** in **Texas**, **0.24%** in the **Southern Region**, and **0.21%** the **U.S.** *(October data unavailable due to the 2025 lapse in appropriations.)*

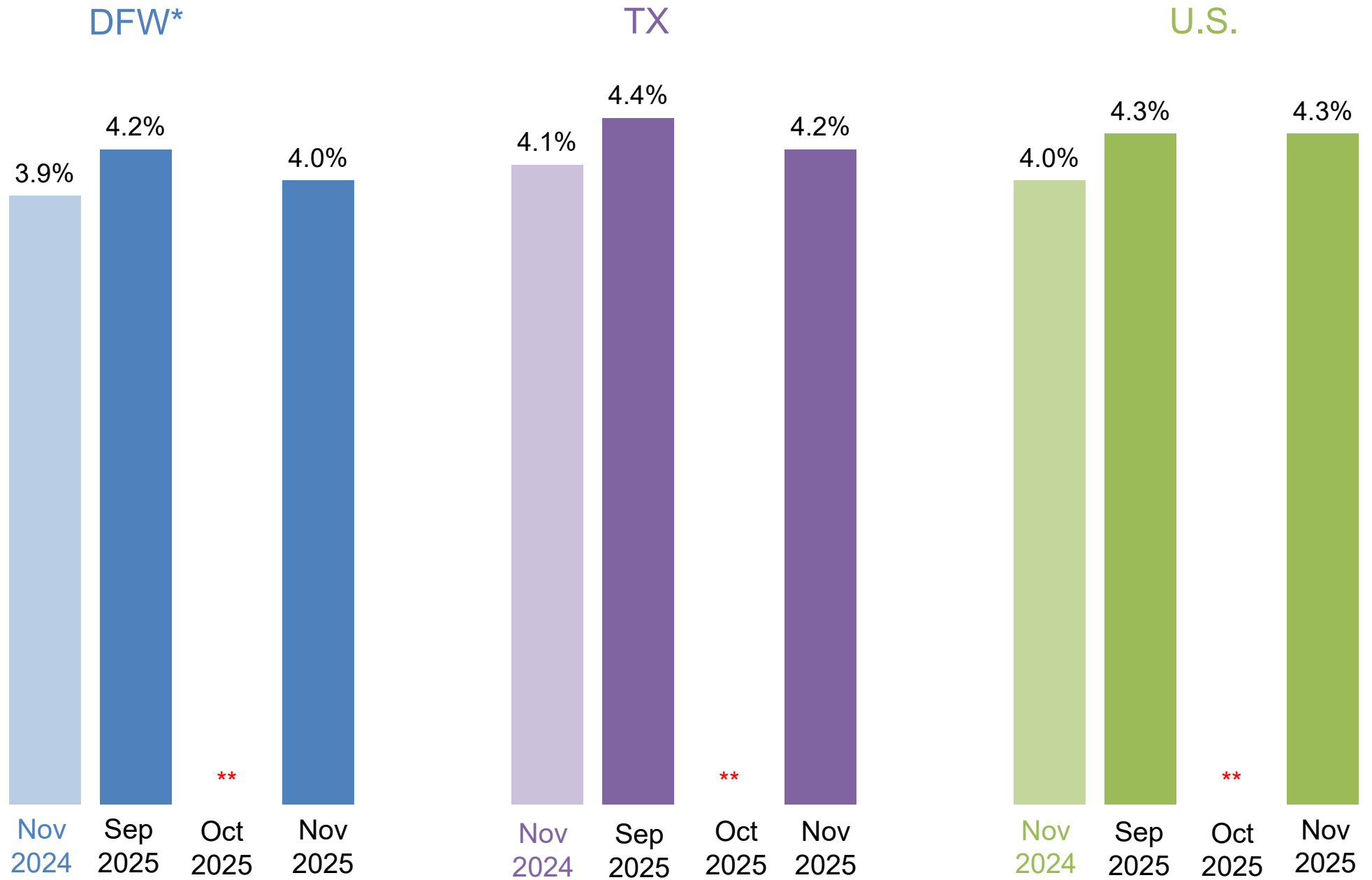
For deeper analysis of these dynamics, see the Federal Reserve Bank of Dallas' [Texas Employment Forecast](#), [DFW Economic Indicators](#), and the Bureau of Labor Statistics' [DFW](#) and [Southwest](#) CPI releases.

# DFW – Job Postings vs. Nonfarm Jobs



\* DFW includes Collin, Dallas, Denton, Ellis, Hunt, Johnson, Kaufman, Parker, Rockwall, Tarrant, and Wise counties.  
 Source: Bureau of Labor Statistics State and Area Employment, Hours, and Earnings, January 2026. Lightcast, 2026.

# Unemployment Rates\* in DFW, Texas, and U.S.



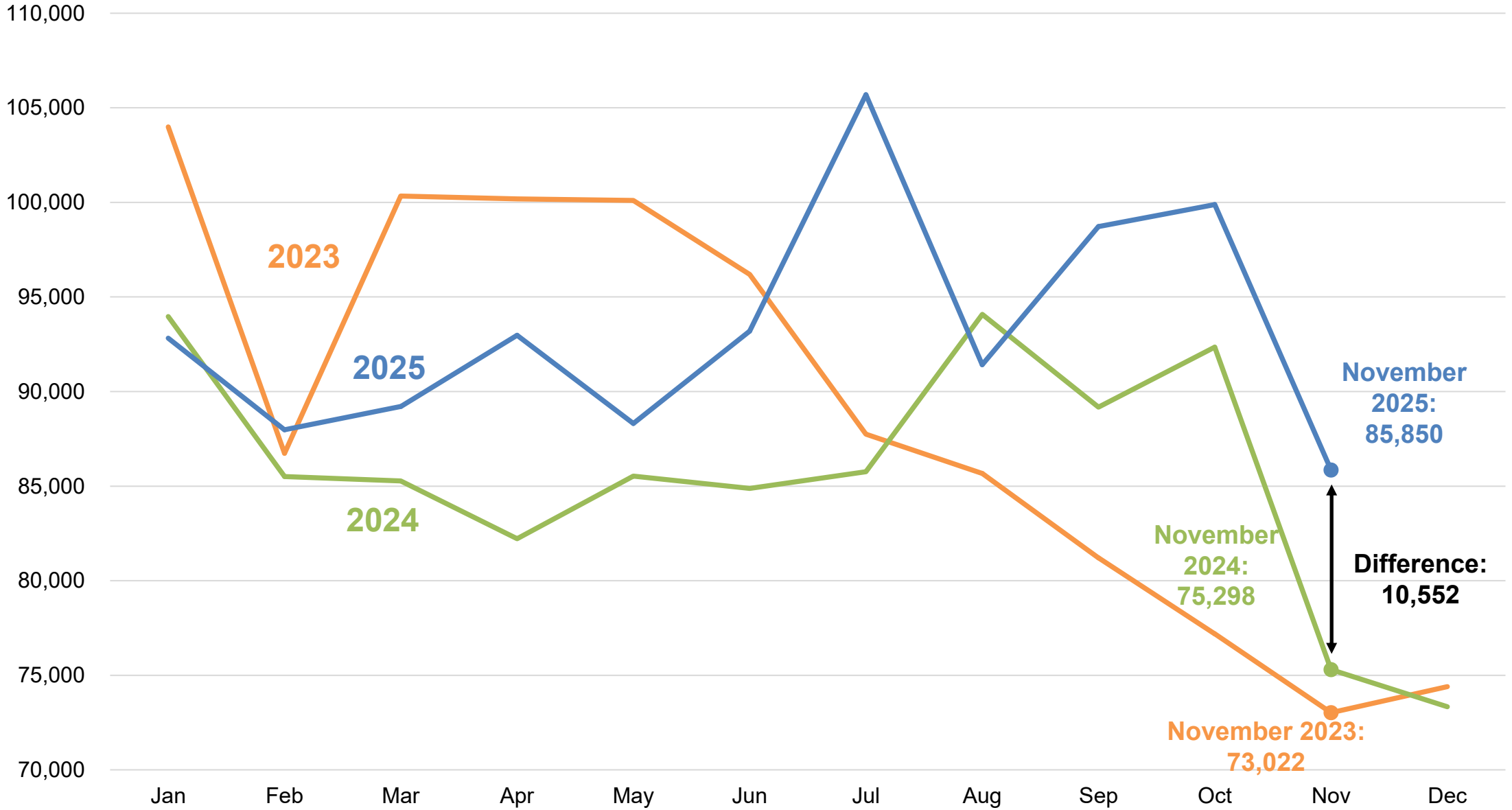
\*Not seasonally adjusted.

\*\*October data unavailable due to the 2025 lapse in appropriations.

Source: Bureau of Labor Statistics, Labor Force Statistics, January 2026

# DFW Total Job Postings Over the Years

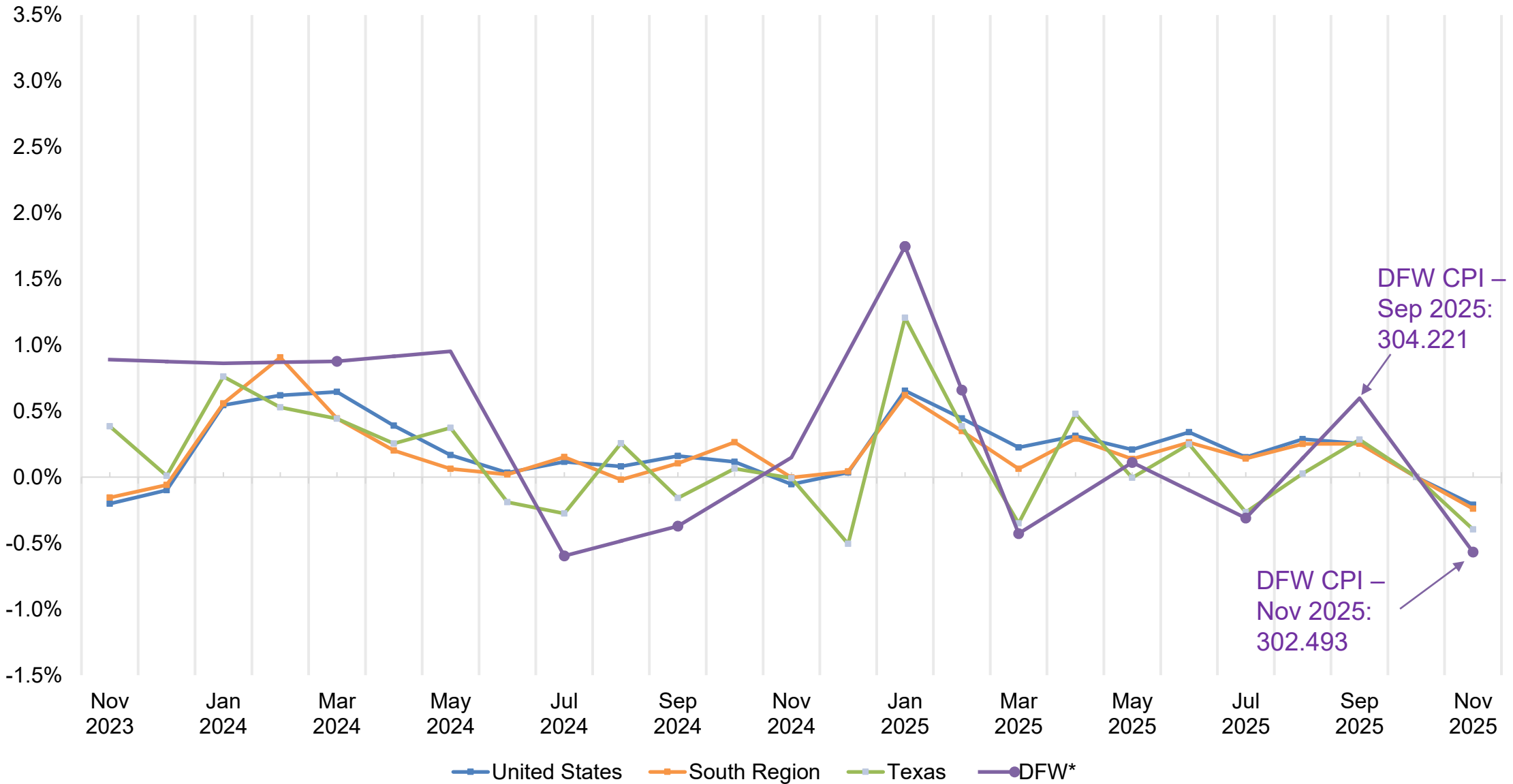
Job Postings



Source: Lightcast, 2026.

# Change in Consumer Price Index

Monthly Change in Consumer Price Index



Note: Data for DFW is reported every other month. All other figures are reported monthly.  
 October CPI data for the US, Texas and the South Region is unavailable due to the 2025 lapse in appropriations.  
 Sources: Texas data sourced from the Texas Comptroller of Public Accounts, *Key Economic Indicators*, January 2026.  
 All data for the U.S., South and DFW sourced from the Bureau of Labor Statistics, *CPI for All Urban Consumers (CPI-U)*, January 2026, and is not seasonally adjusted.

## Top Occupations by Job Postings in DFW (Yearly)

Occupation	Median Annual Earnings	Median Advertised Salary	Average Monthly Hires	Nov. 2024 Unique Job Postings	Nov. 2025 Unique Job Postings	Change, Nov. 2024 to Nov. 2025 (%)
1 Registered nurses	\$98,537	\$88,320	2,820	3,012	7,476	148.2%
2 Software developers	\$131,994	\$134,912	3,038	2,575	2,491	-3.3%
3 Retail salespersons	\$31,926	\$33,408	6,766	2,317	1,865	-19.5%
4 Heavy and tractor-trailer truck drivers	\$57,253	\$75,648	3,515	1,453	1,704	17.3%
5 Computer occupations, all other	\$120,915	\$136,064	796	1,533	1,406	-8.3%
6 Customer service representatives	\$42,306	\$39,552	6,427	1,239	1,350	9.0%
7 Sales representatives, wholesale and manufacturing, except technical and scientific products	\$63,776	\$77,696	776	1,177	1,295	10.0%
8 First-line supervisors of retail sales workers	\$46,443	\$43,648	1,033	1,260	1,107	-12.1%
9 General and operations managers	\$108,628	\$85,376	5,149	872	1,057	21.2%
10 Laborers and freight, stock, and material movers, hand	\$38,380	\$37,504	7,748	922	1,054	14.3%
<b>All occupations</b>	-	-	-	75,285	85,850	<b>14.0%</b>

Source: Lightcast, 2026.

## Top Occupations by Job Postings in DFW (Monthly)

	Occupation	Sep. 2025 Unique Job Postings	Oct. 2025 Unique Job Postings	Nov. 2025 Unique Job Postings	Change, Oct. 2025 to Nov. 2025 (%)
1	Registered nurses	5,650	5,980	7,476	25.0%
2	Software developers	3,378	3,181	2,491	-21.7%
3	Retail salespersons	2,625	2,527	1,865	-26.2%
4	Heavy and tractor-trailer truck drivers	1,956	1,827	1,704	-6.7%
5	Computer occupations, all other	1,792	1,735	1,406	-19.0%
6	Customer service representatives	1,546	1,629	1,350	-17.1%
7	Sales representatives, wholesale and manufacturing, except technical and scientific products	1,314	1,439	1,295	-10.0%
8	First-line supervisors of retail sales workers	1,410	1,533	1,107	-27.8%
9	General and operations managers	1,091	1,139	1,057	-7.2%
10	Laborers and freight, stock, and material movers, hand	1,253	1,350	1,054	-21.9%
	<b>All occupations</b>	<b>98,706</b>	<b>99,886</b>	<b>85,850</b>	<b>-14.1%</b>

Source: Lightcast, 2026.

## Positive Change in Demand by Jobs Postings in DFW

Occupation	Median Annual Earnings	Median Advertised Salary	Average Monthly Hires	Oct. 2025 Unique Job Postings	Nov. 2025 Unique Job Postings	Month-over-month Change
1 Postal Service Mail Carriers*	\$58,692	\$64,574	148	1	69	6800.0%
2 Dentists, All Other Specialists	\$230,085	\$200,448	2	16	75	368.8%
3 Postal Service Mail Sorters, Processors, and Processing Machine Operators	\$60,274	\$64,512	67	18	54	200.0%
4 Speech-Language Pathologists	\$86,347	\$101,632	210	293	427	45.7%
5 Postal Service Clerks	\$65,357	\$43,136	26	71	114	60.6%
6 Licensed Practical and Licensed Vocational Nurses	\$62,172	\$67,840	921	226	340	50.4%
7 Diagnostic Medical Sonographers	\$92,705	\$104,704	48	160	206	28.8%
8 Nursing Assistants	\$37,493	\$37,504	2,102	343	385	12.2%
9 Substance Abuse, Behavioral Disorder, and Mental Health Counselors	\$58,107	\$87,296	352	127	177	39.4%
10 Self-Enrichment Teachers	\$33,533	\$57,216	323	117	154	31.6%
<b>All occupations</b>	-	-	-	<b>99,886</b>	<b>85,850</b>	<b>-14.1%</b>

\*The significant percentage gain is largely attributable to the low number from the prior month.  
Source: Lightcast, 2026.

## Negative Change in Demand by Jobs Postings in DFW

	Occupation	Median Annual Earnings	Median Advertised Salary	Average Monthly Hires	Oct. 2025 Unique Job Postings	Nov. 2025 Unique Job Postings	Month-over-month Change
1	Sales and Related Workers, All Other	\$33,650	\$47,744	242	327	147	-55.0%
2	Shipping, Receiving, and Inventory Clerks	\$40,632	\$38,528	1,530	598	335	-44.0%
3	Lawyers	\$158,316	\$134,912	451	538	319	-40.7%
4	Production Workers, All Other	\$34,802	\$39,552	483	745	510	-31.5%
5	Waiters and Waitresses	\$28,504	\$40,064	7,008	876	615	-29.8%
6	Sales Representatives, Wholesale and Manufacturing, Technical and Scientific Products	\$84,116	\$80,256	437	853	619	-27.4%
7	Secretaries and Administrative Assistants, Except Legal, Medical, and Executive	\$46,286	\$43,648	1,716	859	643	-25.1%
8	Fast Food and Counter Workers	\$26,476	\$29,568	18,269	774	600	-22.5%
9	Health Technologists and Technicians, All Other	\$50,085	\$41,856	129	839	654	-22.1%
10	Project Management Specialists	\$94,827	\$106,752	1,657	1112	941	-15.4%
	<b>All occupations</b>	-	-	-	<b>99,886</b>	<b>85,850</b>	<b>-14.1%</b>

Source: Lightcast, 2026.

## DFW Employment by Industry

Industry	Nov. 2024 Employment	Sep. 2025 Employment	Oct. 2025 Employment	Nov. 2025 Employment	Change, Nov. 2024 to Nov. 2025 (%)	Change, Oct. 2025 to Nov. 2025 (%)
Mining, quarrying, and oil and gas extraction	109,000	114,400	114,400	113,400	4.0%	-0.9%
Construction	147,200	148,900	148,600	148,600	1.0%	0.0%
Manufacturing	311,500	308,700	307,500	306,600	-1.6%	-0.3%
Wholesale and retail trade	640,000	634,900	640,100	645,500	0.9%	0.8%
Transportation and utilities	272,600	257,800	262,900	271,000	-0.6%	3.1%
Information	89,300	88,200	88,600	89,400	0.1%	0.9%
Financial activities	386,800	383,000	383,100	382,000	-1.2%	-0.3%
Professional and business services	782,800	765,600	772,700	768,500	-1.8%	-0.5%
Education and health services	517,100	529,700	530,300	532,800	3.0%	0.5%
Leisure and hospitality	428,400	435,500	435,900	434,800	1.5%	-0.3%
Other services	140,400	142,000	142,900	142,500	1.5%	-0.3%
Government	492,300	490,200	498,900	500,800	1.7%	0.4%
<b>Total nonfarm</b>	<b>4,317,400</b>	<b>4,298,900</b>	<b>4,325,900</b>	<b>4,335,900</b>	<b>0.4%</b>	<b>0.2%</b>

Numbers may not sum due to rounding. Employment is not seasonally adjusted.

Source: Bureau of Labor Statistics State and Area Employment, Hours, and Earnings, and Current Employment Statistics, January 2026.

## DFW vs. U.S. Employment by Industry

Industry	DFW Nov. 2025 Employment	DFW Nov. 2025 Employment Share (%)	DFW Employment Change, Nov. 2024 to Nov. 2025 (%)	U.S. Nov. 2025 Employment	U.S. Nov. 2025 Employment Share (%)	U.S. Employment Change, Nov. 2024 to Nov. 2025 (%)
Mining, quarrying, and oil and gas extraction	113,400	2.6%	4.0%	612,000	0.4%	-2.2%
Construction	148,600	3.4%	1.0%	8,383,000	5.2%	0.5%
Manufacturing	306,600	7.1%	-1.6%	12,698,000	7.9%	-0.6%
Wholesale and retail trade	645,500	14.9%	0.9%	21,996,900	13.7%	0.1%
Transportation and utilities	271,000	6.3%	-0.6%	7,455,500	4.6%	-0.2%
Information	89,400	2.1%	0.1%	2,920,000	1.8%	-0.6%
Financial activities	382,000	8.8%	-1.2%	9,251,000	5.8%	0.4%
Professional and business services	768,500	17.7%	-1.8%	22,692,000	14.1%	-0.4%
Education and health services	532,800	12.3%	3.0%	27,860,000	17.3%	2.7%
Leisure and hospitality	434,800	10.0%	1.5%	16,911,000	10.5%	1.5%
Other services	142,500	3.3%	1.5%	6,049,000	3.8%	1.0%
Government	500,800	11.6%	1.7%	23,812,000	14.8%	-0.7%
<b>Total nonfarm</b>	<b>4,335,900</b>	<b>100.0%</b>	<b>0.4%</b>	<b>160,640,000</b>	<b>100.0%</b>	<b>0.5%</b>

Numbers may not sum due to rounding. Employment is not seasonally adjusted.

Source: Bureau of Labor Statistics State and Area Employment, Hours, and Earnings, and Current Employment Statistics, January 2026.

# *An Economic Engine for the Region*

## **Web**

[economicengine.utdallas.edu](http://economicengine.utdallas.edu)

## **Email**

[economicengine@utdallas.edu](mailto:economicengine@utdallas.edu)

## **Newsletter**

[economicengine.utdallas.edu/tools/subscribe](http://economicengine.utdallas.edu/tools/subscribe)