



DFW
LABOR MARKET
UPDATE
August 2025

Published October 8, 2025

SUMMARY

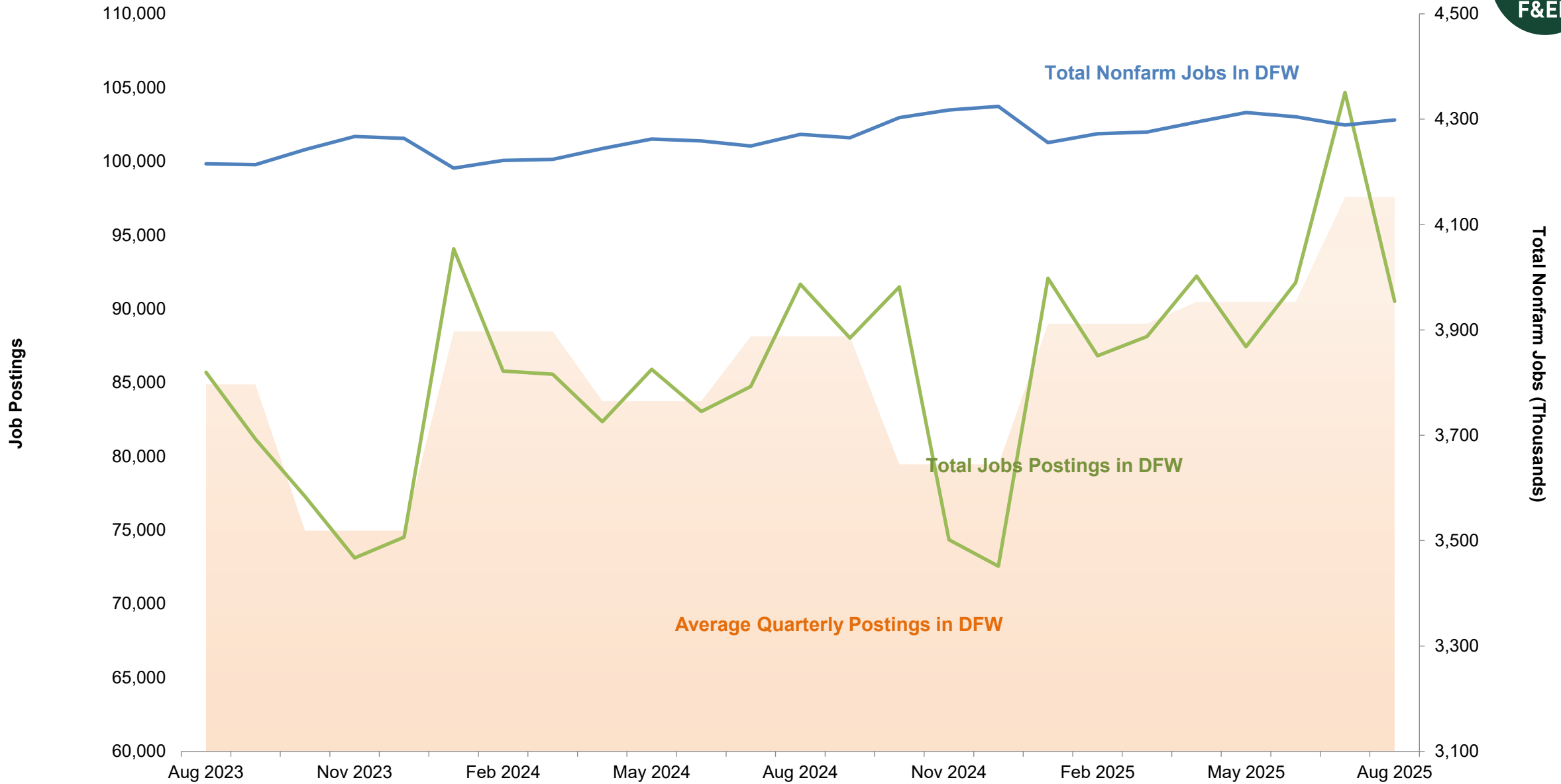
- From July to August, the DFW labor market gained **9,500** jobs, increasing its total workforce to **4,298,600**.
- The **government** sector saw its employment grow by **2.2%**, while the **leisure and hospitality** experienced a moderate decline of **0.6%**.
- Unemployment rates increased sharply for **DFW** (4.0% to 4.4%), **Texas** (4.2% to 4.7%), while U.S experienced a slight decline from **4.6% to 4.5%**.
- Overall job postings decreased by **13.5%** in August. Postings for **first-line supervisors of retail sales workers** saw the largest drop by **20.9%**, while **sales representatives** experienced a **18.1%** loss.
- The fastest growing occupation was **bus drivers, transit and intercity** with a **247.8%** increase in new postings. *(Note: The significant percentage change in new job postings is due to the low number of postings in the previous month. Job postings were driven by childcare centers and carriers such as Greyhound.)*
- In contrast, **police and sheriff's patrol officers** saw the largest decline in job postings, at **83%**.
- The Consumer Price Index (CPI) for **DFW** will not be released for August. However, inflation increased in **Texas (0.026%)**, the **Southern Region (0.25%)**, and the **U.S. (0.29%)**.

For deeper analysis of these dynamics, see the Federal Reserve Bank of Dallas' [Texas Employment Forecast](#), [DFW Economic Indicators](#), and the Bureau of Labor Statistics' [DFW](#) and [Southwest](#) CPI releases.



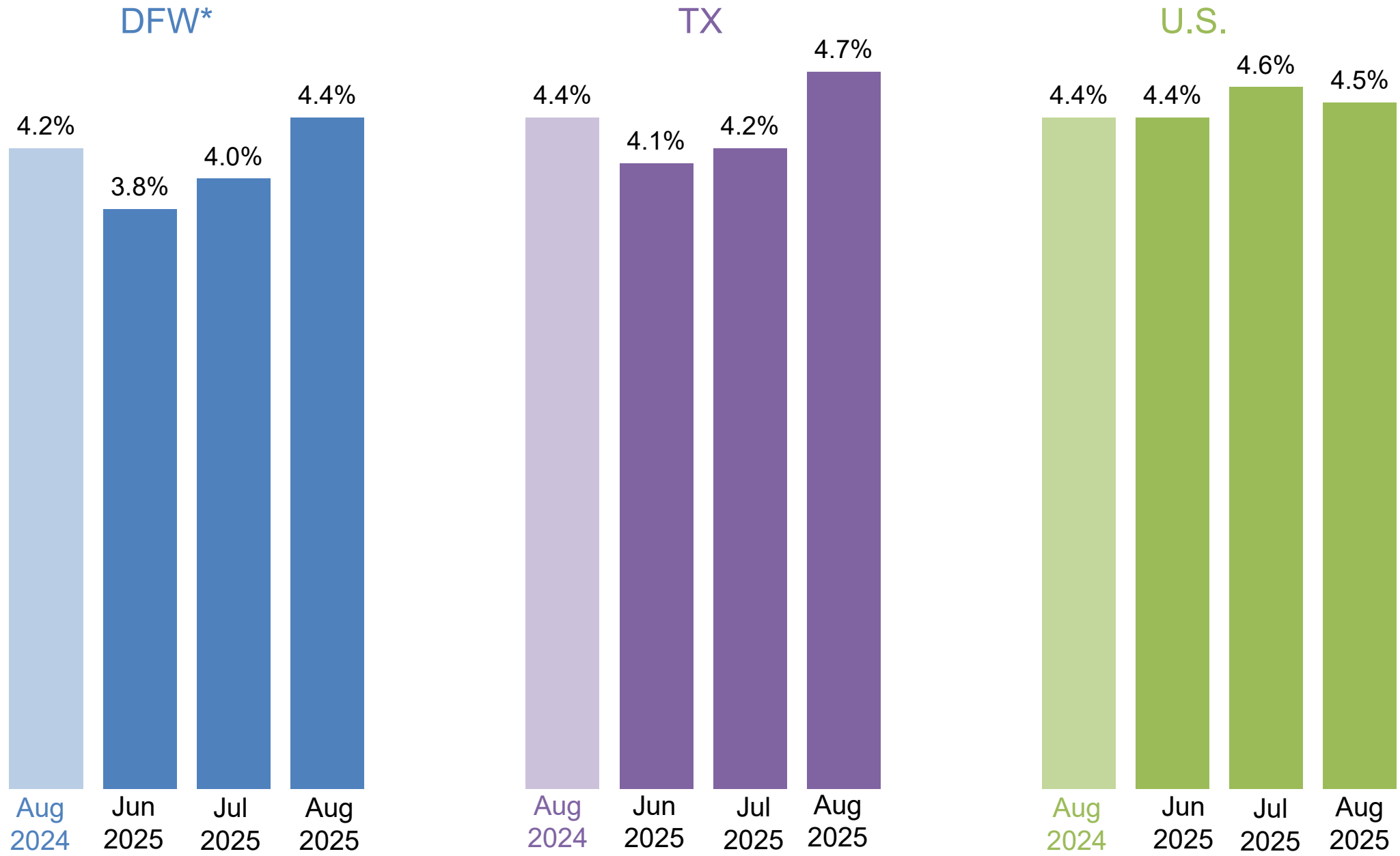


DFW – Job Postings vs. Nonfarm Jobs



* DFW includes Collin, Dallas, Denton, Ellis, Hunt, Johnson, Kaufman, Parker, Rockwall, Tarrant, and Wise counties.
 Source: Bureau of Labor Statistics State and Area Employment, Hours, and Earnings, October 2025. Lightcast, 2025.

Unemployment Rates* in DFW, Texas, and U.S.



*Not seasonally adjusted.

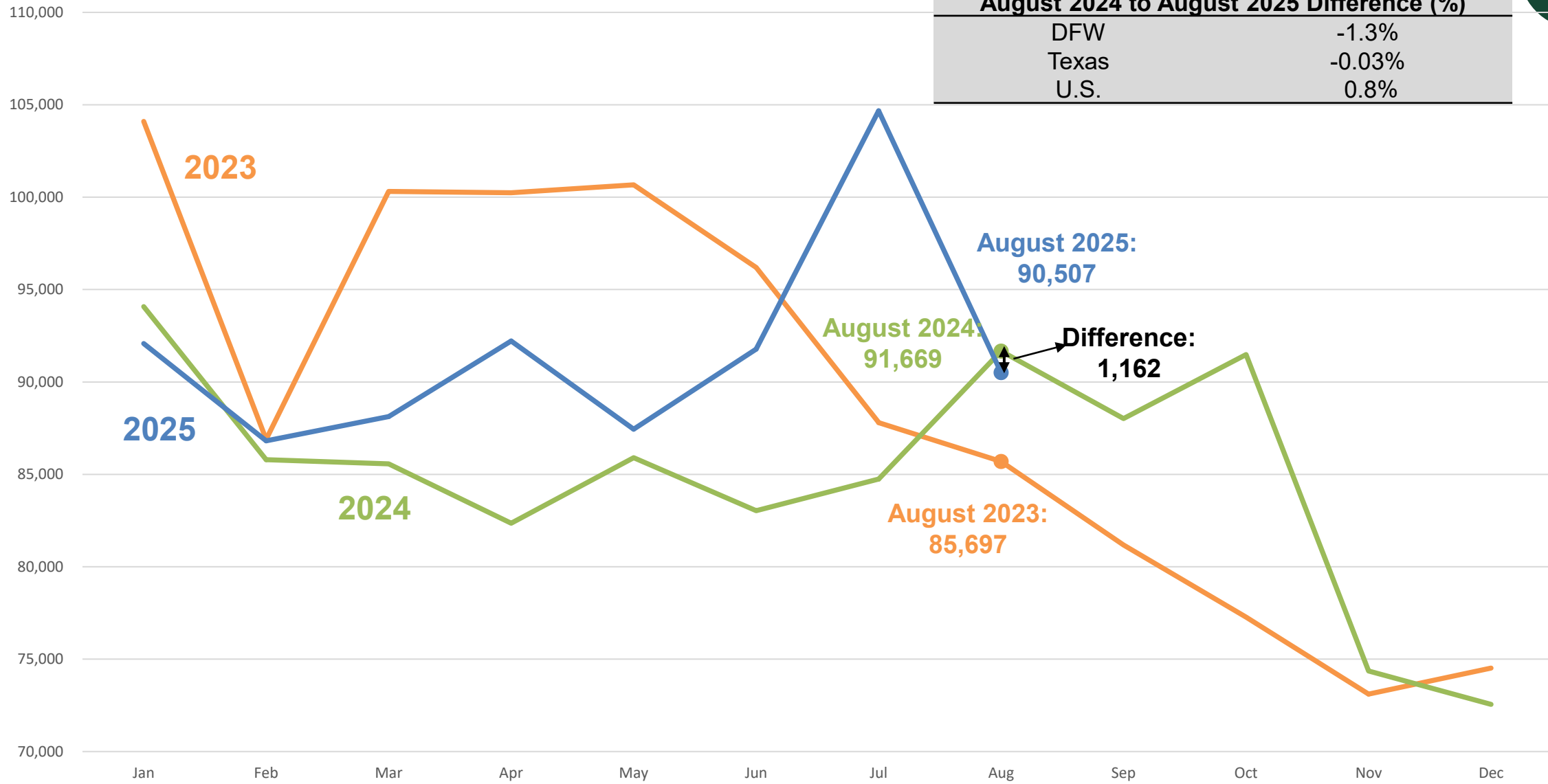
Source: Bureau of Labor Statistics, Labor Force Statistics, October 2025.

DFW Total Job Postings Over the Years



Job Postings

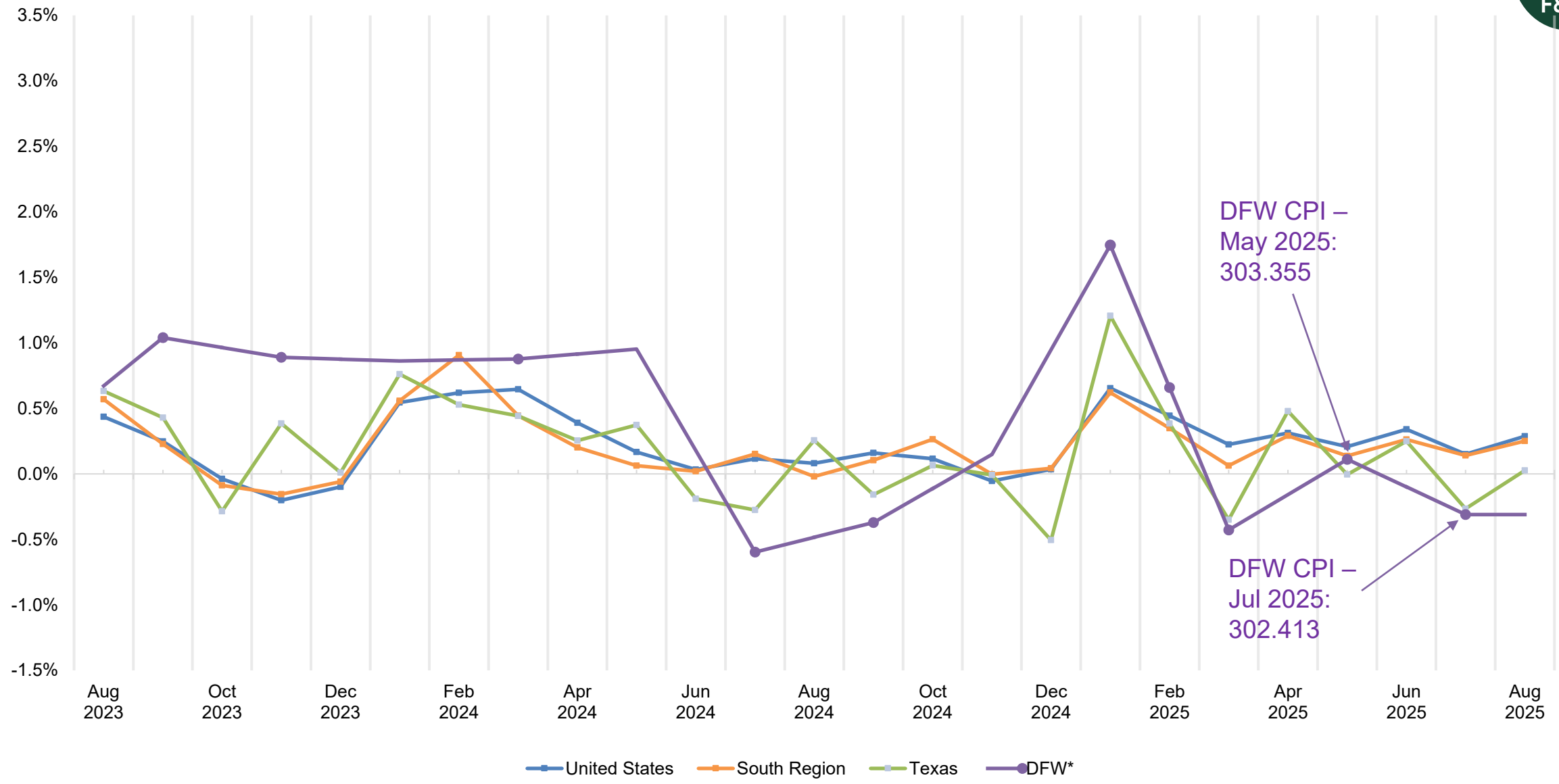
August 2024 to August 2025 Difference (%)	
DFW	-1.3%
Texas	-0.03%
U.S.	0.8%





Change in Consumer Price Index

Monthly Change in Consumer Price Index



Note: Data for DFW is reported every other month. All other figures are reported monthly.
 Sources: Texas data sourced from the Texas Comptroller of Public Accounts, *Key Economic Indicators*, October 2025.
 All data for the U.S., South and DFW sourced from the Bureau of Labor Statistics, *CPI for All Urban Consumers (CPI-U)*, October 2025, and is not seasonally adjusted.

Top Occupations by Job Postings in DFW (Yearly)

Occupation	Median Annual Earnings	Median Advertised Salary	Average Monthly Hires	Aug. 2024 Unique Job Postings	Aug. 2025 Unique Job Postings	Change, Aug. 2024 to Aug. 2025 (%)
1 Registered nurses	\$98,548	\$88,448	2,923	3,920	5,560	41.8%
2 Software developers	\$131,982	\$133,888	3,086	3,276	2,791	-14.8%
3 Retail salespersons	\$31,929	\$34,432	6,874	2,447	2,141	-12.5%
4 Computer occupations, all other	\$120,914	\$142,080	815	1,704	1,642	-3.6%
5 Heavy and tractor-trailer truck drivers	\$57,250	\$70,528	3,610	1,800	1,368	-24.0%
6 Customer service representatives	\$42,305	\$41,344	6,553	1,559	1,749	12.2%
7 First-line supervisors of retail sales workers	\$46,442	\$43,136	1,058	1,497	1,308	-12.6%
8 Sales representatives, wholesale and manufacturing, except technical and scientific products	\$63,768	\$78,720	803	1,337	1,332	-0.4%
9 Maintenance and repair workers, general	\$47,017	\$52,096	1,953	1,182	1,149	-2.8%
10 Project management specialists	\$94,822	\$106,240	1,697	1,104	1,099	-0.5%
All occupations	-	-	-	91,659	90,507	-1.3%

Source: Lightcast, 2025.



Top Occupations by Job Postings in DFW (Monthly)

	Occupation	Jun. 2025 Unique Job Postings	Jul. 2025 Unique Job Postings	Aug. 2025 Unique Job Postings	Change, Jul. 2025 to Aug. 2025 (%)
1	Registered nurses	4,520	6,230	5,560	-10.8%
2	Software developers	2,920	3,115	2,791	-10.4%
3	Retail salespersons	2,096	2,555	2,141	-16.2%
4	Computer occupations, all other	1,713	1,723	1,642	-4.7%
5	Heavy and tractor-trailer truck drivers	1,766	1,584	1,368	-13.6%
6	Customer service representatives	1,576	1,751	1,749	-0.1%
7	First-line supervisors of retail sales workers	1,403	1,653	1,308	-20.9%
8	Sales representatives, wholesale and manufacturing, except technical and scientific products	1,350	1,627	1,332	-18.1%
9	Maintenance and repair workers, general	1,095	1,253	1,149	-8.3%
10	Project management specialists	1,163	1,220	1,099	-9.9%
	All occupations	91,768	104,672	90,507	-13.5%

Source: Lightcast, 2025.



Positive Change in Demand by Jobs Postings in DFW

	Occupation	Median Annual Earnings	Median Advertised Salary	Average Monthly Hires	Jul. 2025 Unique Job Postings	Aug. 2025 Unique Job Postings	Month-over-month Change
1	Bus Drivers, Transit and Intercity	\$63,333	\$65,152	60	23	80	247.8%
2	Psychologists, All Other	\$81,686	\$156,416	10	60	112	86.7%
3	Electrical, Electronic, and Electromechanical Assemblers, Except Coil Winders, Tapers, and Finishers	\$40,668	\$43,648	207	44	87	97.7%
4	Tutors	\$29,619	\$49,024	317	98	162	65.3%
5	Sales and Related Workers, All Other	\$33,647	\$42,624	248	208	274	31.7%
6	Securities, Commodities, and Financial Services Sales Agents	\$84,977	\$61,312	331	358	421	17.6%
7	Computer and Information Research Scientists	\$97,692	\$142,848	39	264	309	17.0%
8	Demonstrators and Product Promoters	\$37,213	\$52,096	168	186	237	27.4%
9	Architectural and Engineering Managers	\$171,313	\$157,440	136	338	382	13.0%
10	Data Scientists	\$119,538	\$127,744	471	923	982	6.4%
	All occupations	-	-	-	104,672	90,507	-13.5%

Source: Lightcast, 2025.



Negative Change in Demand by Jobs Postings in DFW

	Occupation	Median Annual Earnings	Median Advertised Salary	Average Monthly Hires	Jul. 2025 Unique Job Postings	Aug. 2025 Unique Job Postings	Month-over-month Change
1	Police and Sheriff's Patrol Officers	\$91,303	\$93,056	343	377	64	-83.0%
2	Postsecondary Teachers	\$87,560	\$65,408	924	497	192	-61.4%
3	Lawyers	\$158,317	\$145,280	454	706	422	-40.2%
4	Driver/Sales Workers	\$39,490	\$40,064	447	680	417	-38.7%
5	Physical Therapists	\$107,899	\$102,784	211	710	463	-34.8%
6	First-Line Supervisors of Food Preparation and Serving Workers	\$38,202	\$37,248	1,596	780	513	-34.2%
7	Fast Food and Counter Workers	\$26,469	\$29,056	18,786	1061	728	-31.4%
8	Cashiers	\$29,251	\$28,032	7,233	784	545	-30.5%
9	Janitors and Cleaners, Except Maids and Housekeeping Cleaners	\$34,325	\$33,920	3,211	891	632	-29.1%
10	Food Service Managers	\$65,806	\$52,608	277	1130	853	-24.5%
	All occupations	-	-	-	104,672	90,507	-13.5%

Source: Lightcast, 2025.





DFW Employment by Industry

Industry	Aug. 2024 Employment	Jun. 2025 Employment	Jul. 2025 Employment	Aug. 2025 Employment	Change, Aug. 2024 to Aug. 2025 (%)	Change, Jul. 2025 to Aug. 2025 (%)
Mining, quarrying, and oil and gas extraction	109,600	112,600	113,000	113,400	3.5%	0.4%
Construction	148,100	149,900	149,500	149,200	0.7%	-0.2%
Manufacturing	312,400	310,700	311,100	309,800	-0.8%	-0.4%
Wholesale and retail trade	628,000	635,800	635,900	634,600	1.1%	-0.2%
Transportation and utilities	261,100	258,900	258,300	258,800	-0.9%	0.2%
Information	89,000	89,300	89,600	89,800	0.9%	0.2%
Financial activities	382,300	385,000	386,200	384,000	0.4%	-0.6%
Professional and business services	783,100	761,900	765,700	767,500	-2.0%	0.2%
Education and health services	511,900	526,600	524,400	528,900	3.3%	0.9%
Leisure and hospitality	433,300	446,500	442,400	439,800	1.5%	-0.6%
Other services	142,100	143,500	143,000	142,600	0.4%	-0.3%
Government	470,400	484,100	470,000	480,200	2.1%	2.2%
Total nonfarm	4,271,300	4,304,800	4,289,100	4,298,600	0.6%	0.2%

Numbers may not sum due to rounding. Employment is not seasonally adjusted.

Source: Bureau of Labor Statistics State and Area Employment, Hours, and Earnings, and Current Employment Statistics, October 2025.



DFW vs. U.S. Employment by Industry

Industry	DFW Aug. 2025 Employment	DFW Aug. 2025 Employment Share (%)	DFW Employment Change, Aug. 2024 to Aug. 2025 (%)	U.S. Aug. 2025 Employment	U.S. Aug. 2025 Employment Share (%)	U.S. Employment Change, Aug. 2024 to Aug. 2025 (%)
Mining, quarrying, and oil and gas extraction	113,400	2.6%	3.5%	617,000	0.4%	-2.2%
Construction	149,200	3.5%	0.7%	8,505,000	5.3%	0.6%
Manufacturing	309,800	7.2%	-0.8%	12,783,000	8.0%	-0.7%
Wholesale and retail trade	634,600	14.8%	1.1%	21,713,500	13.6%	0.3%
Transportation and utilities	258,800	6.0%	-0.9%	7,226,900	4.5%	1.0%
Information	89,800	2.1%	0.9%	2,950,000	1.9%	-0.2%
Financial activities	384,000	8.9%	0.4%	9,305,000	5.8%	0.8%
Professional and business services	767,500	17.9%	-2.0%	22,646,000	14.2%	-0.3%
Education and health services	528,900	12.3%	3.3%	27,169,000	17.0%	3.2%
Leisure and hospitality	439,800	10.2%	1.5%	17,688,000	11.1%	1.3%
Other services	142,600	3.3%	0.4%	6,099,000	3.8%	1.2%
Government	480,200	11.2%	2.1%	22,708,000	14.2%	0.5%
Total nonfarm	4,298,600	100.0%	0.6%	159,410,000	100.0%	0.8%

Numbers may not sum due to rounding. Employment is not seasonally adjusted.

Source: Bureau of Labor Statistics State and Area Employment, Hours, and Earnings, and Current Employment Statistics, October 2025.

***An Economic Engine
for the Region***

Web

economicengine.utdallas.edu

Email

economicengine@utdallas.edu

Newsletter

economicengine.utdallas.edu/tools/subscribe