



DFW LABOR MARKET UPDATE **July 2025**

Published September 10, 2025

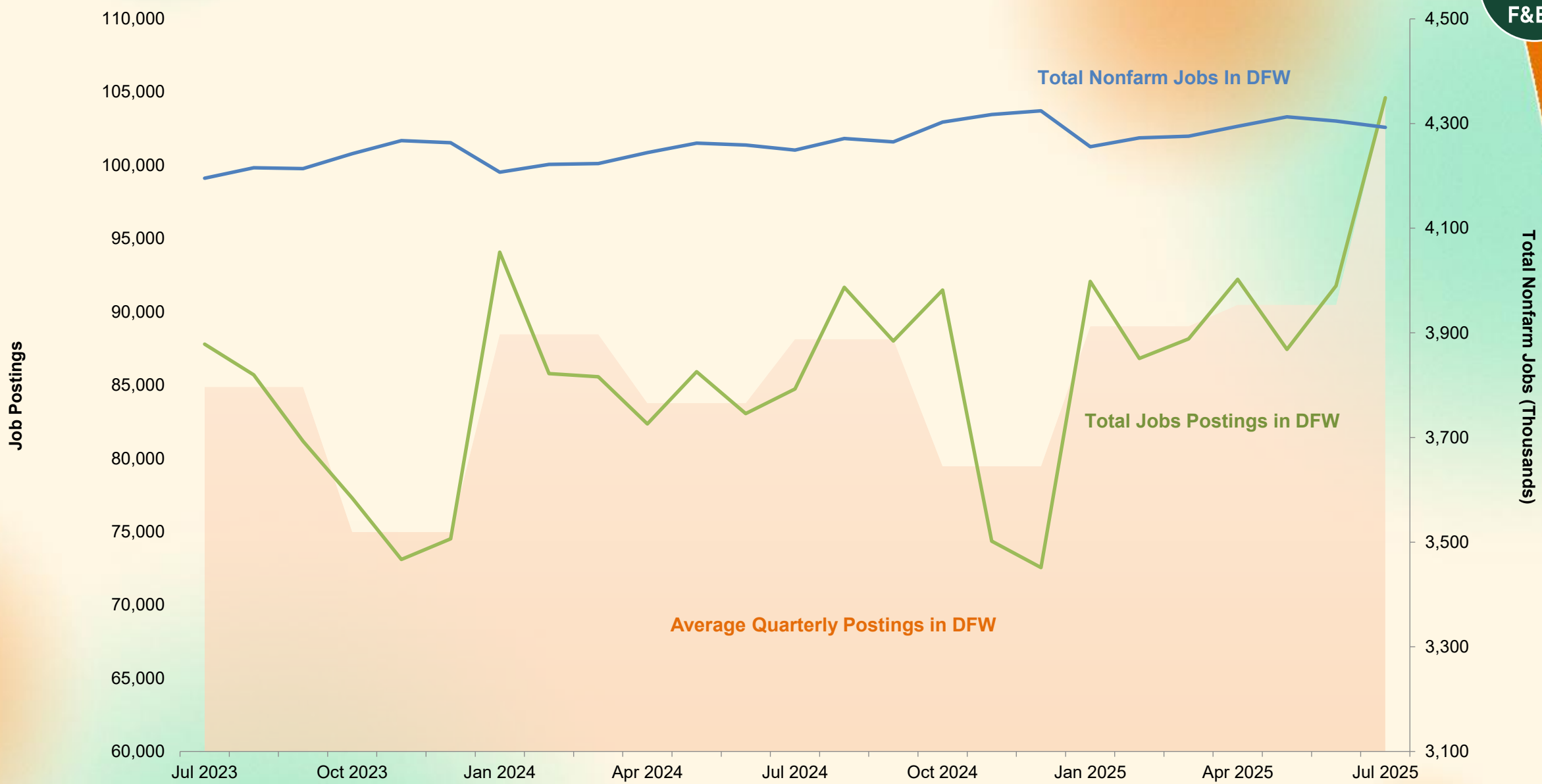
SUMMARY

- From June to July, the DFW labor market lost **12,200** jobs, reducing its total workforce to **4,292,600**.
- The **professional and business services** sector saw its employment grow by **0.8%**, while the **government sector** experienced a significant decline of **2.5%**.
- Unemployment rates increased slightly for **DFW** (3.8% to 4.0%), **Texas** (4.1% to 4.2%), and the **U.S.** (4.4% to 4.6%).
- Overall job postings increased by **14%** in July. Postings for **registered nurses** saw a large gain of over 37.7%, while **heavy and tractor-trailer truck drivers** experienced a **10.3%** loss.
- The fastest growing occupation was **musical instrument repairers and tuners**, with a massive **10,250%** increase in new postings. *(Note: The significant percentage change in new job postings is due to the low number of postings in the previous month. As the data is sourced from Lightcast, the specific origin of these new postings cannot be identified.)*
- In contrast, **natural sciences managers** saw the largest decrease in job postings, at **34.7%**.
- The Consumer Price Index (CPI) for **DFW** dropped by **0.31%** and state of **Texas** fell by **0.27%**. However, inflation increased in the **Southern Region (0.14%)**, and the **U.S. (0.15%)**.

For deeper analysis of these dynamics, see the Federal Reserve Bank of Dallas' [Texas Employment Forecast](#), [DFW Economic Indicators](#), and the Bureau of Labor Statistics' [DFW](#) and [Southwest](#) CPI releases.



DFW – Job Postings vs. Nonfarm Jobs



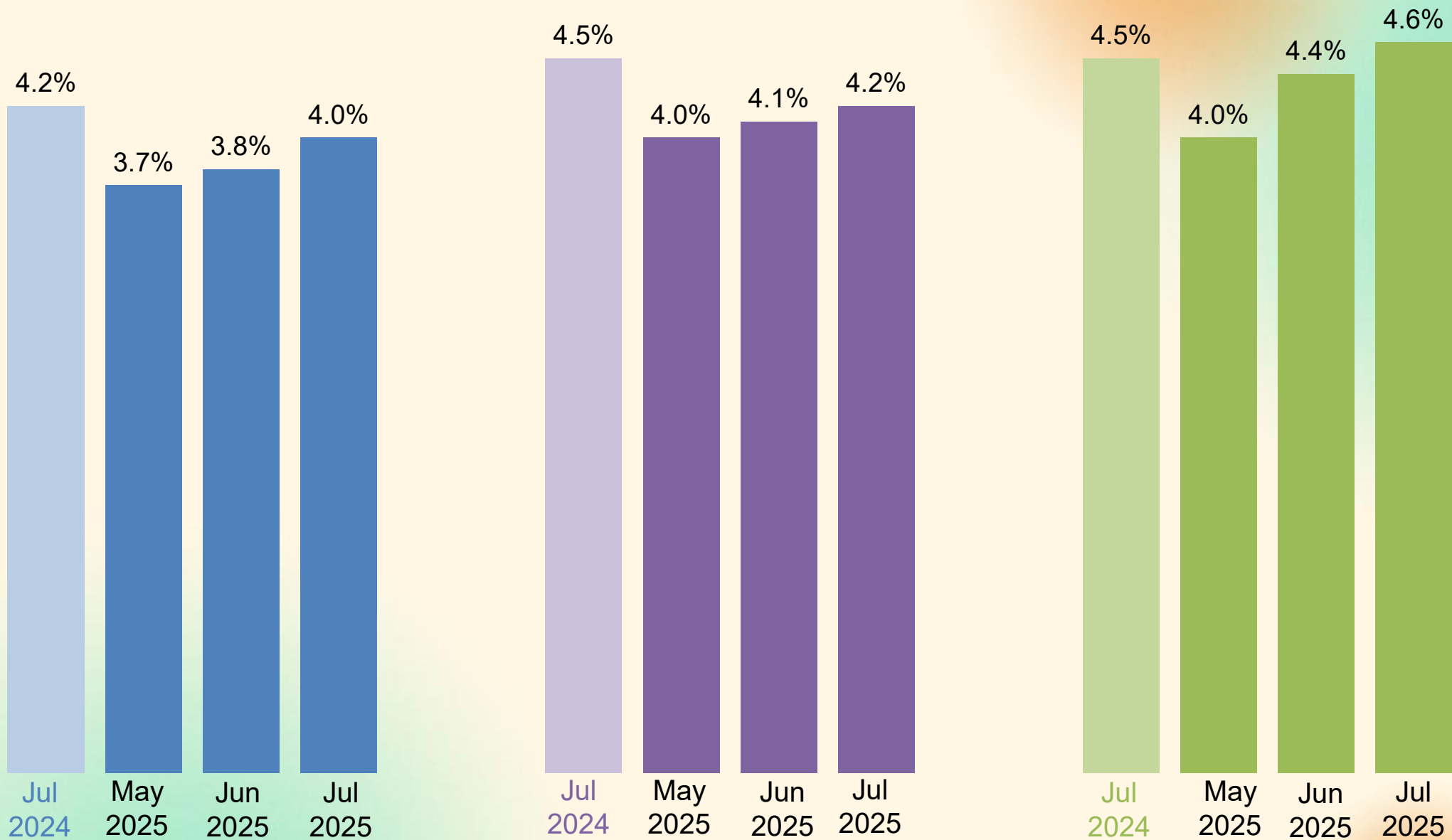
* DFW includes Collin, Dallas, Denton, Ellis, Hunt, Johnson, Kaufman, Parker, Rockwall, Tarrant, and Wise counties.
Source: Bureau of Labor Statistics State and Area Employment, Hours, and Earnings, September 2025. Lightcast, 2025.

Unemployment Rates* in DFW, Texas, and U.S.

DFW*

TX

U.S.



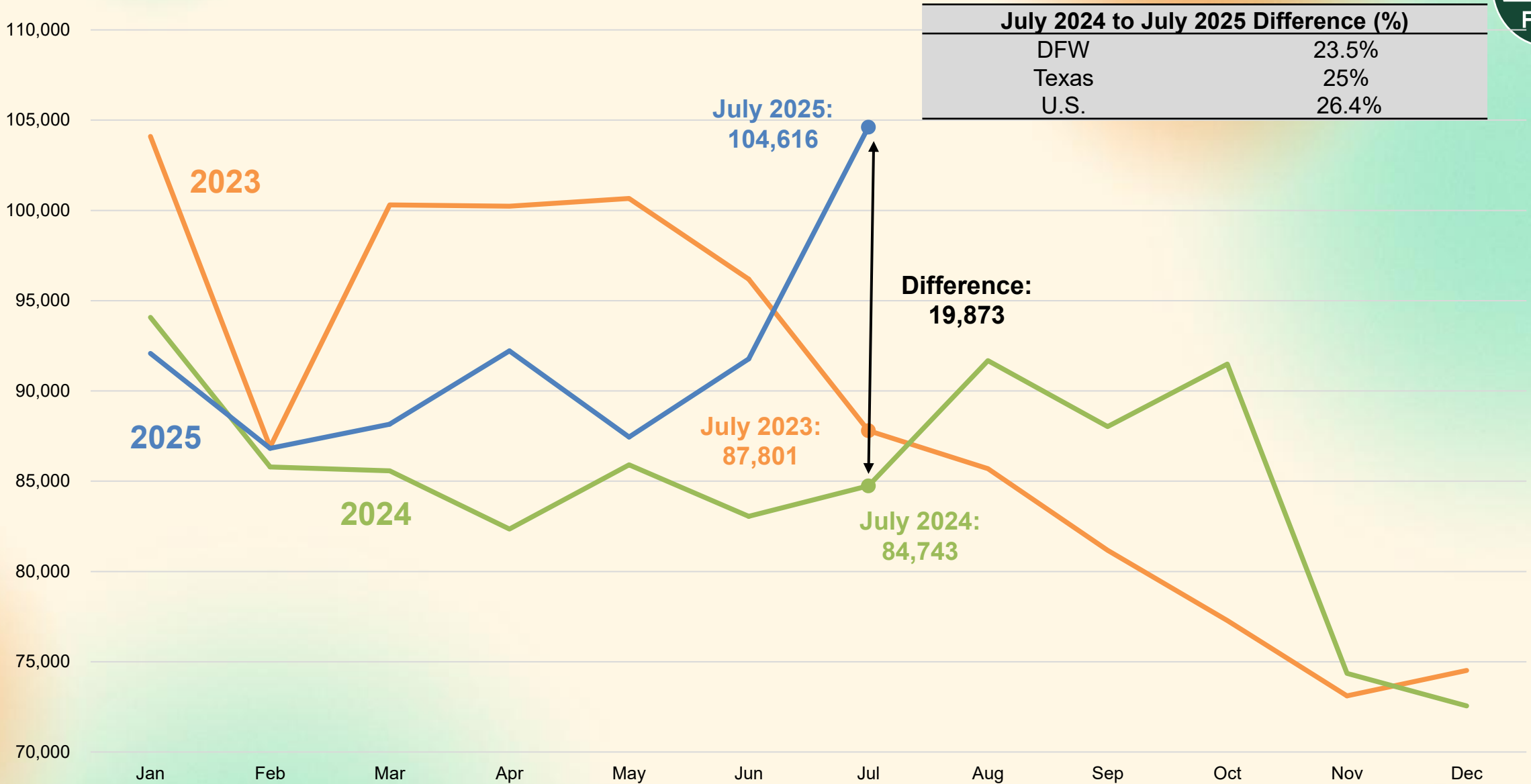
*Not seasonally adjusted.

Source: Bureau of Labor Statistics, Labor Force Statistics, September 2025.



DFW Total Job Postings Over the Years

Job Postings

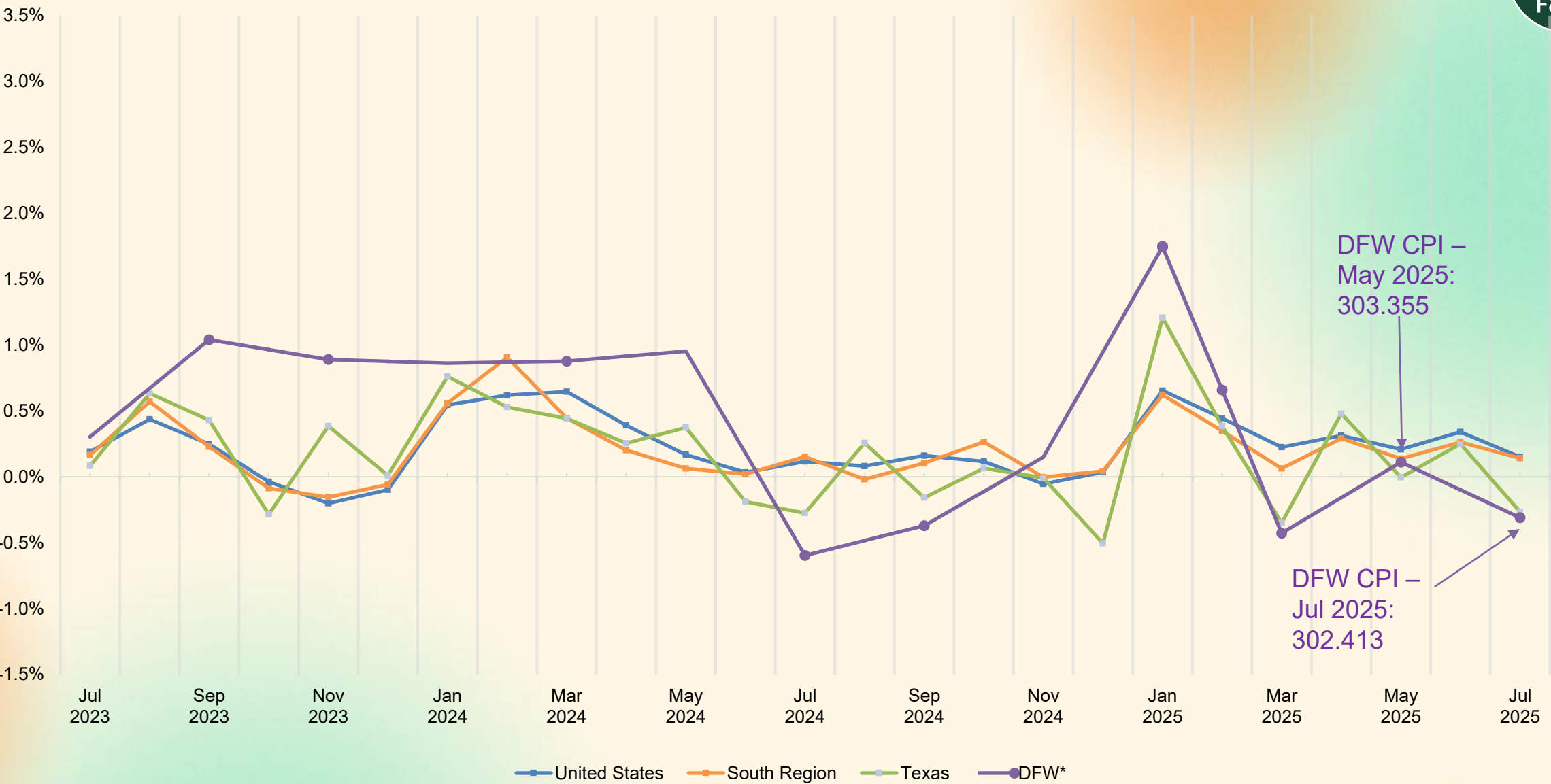


| July 2024 to July 2025 Difference (%) | |
|---------------------------------------|-------|
| DFW | 23.5% |
| Texas | 25% |
| U.S. | 26.4% |



Change in Consumer Price Index

Monthly Change in Consumer Price Index



Note: Data for DFW is reported every other month. All other figures are reported monthly.
Sources: Texas data sourced from the Texas Comptroller of Public Accounts, *Key Economic Indicators*, September 2025.
All data for the U.S., South and DFW sourced from the Bureau of Labor Statistics, *CPI for All Urban Consumers (CPI-U)*, September 2025, and is not seasonally adjusted.

Top Occupations by Job Postings in DFW (Yearly)

| | Occupation | Median Annual Earnings | Median Advertised Salary | Average Monthly Hires | Jul. 2024 Unique Job Postings | Jul. 2025 Unique Job Postings | Change, Jul. 2024 to Jul. 2025 (%) |
|----|--|------------------------|--------------------------|-----------------------|-------------------------------|-------------------------------|------------------------------------|
| 1 | Registered nurses | \$98,548 | \$88,448 | 2,923 | 3,140 | 6,226 | 98.3% |
| 2 | Software developers | \$131,982 | \$130,816 | 3,086 | 2,826 | 3,117 | 10.3% |
| 3 | Retail salespersons | \$31,929 | \$33,920 | 6,874 | 2,483 | 2,555 | 2.9% |
| 4 | Customer service representatives | \$42,305 | \$40,576 | 6,553 | 1,541 | 1,750 | 13.6% |
| 5 | Computer occupations, all other | \$120,914 | \$142,080 | 815 | 1,461 | 1,722 | 17.9% |
| 6 | First-line supervisors of retail sales workers | \$46,442 | \$43,648 | 1,058 | 1,648 | 1,653 | 0.3% |
| 7 | Sales representatives, wholesale and manufacturing, except technical and scientific products | \$63,768 | \$80,256 | 803 | 1,289 | 1,626 | 26.1% |
| 8 | Heavy and tractor-trailer truck drivers | \$57,250 | \$75,648 | 3,610 | 1,621 | 1,584 | -2.3% |
| 9 | Laborers and freight, stock, and material movers, hand | \$38,378 | \$37,504 | 7,986 | 1,116 | 1,327 | 18.9% |
| 10 | Maintenance and repair workers, general | \$47,017 | \$51,072 | 1,953 | 1,172 | 1,251 | 6.7% |
| | All occupations | - | - | - | 84,729 | 104,616 | 23.5% |

Source: Lightcast, 2025.

Top Occupations by Job Postings in DFW (Monthly)

| Occupation | | May. 2025 Unique Job Postings | Jun. 2025 Unique Job Postings | Jul. 2025 Unique Job Postings | Change, Jun. 2025 to Jul. 2025 (%) |
|-----------------|--|-------------------------------------|-------------------------------------|-------------------------------------|--|
| 1 | Registered nurses | 3,938 | 4,520 | 6,226 | 37.7% |
| 2 | Software developers | 3,179 | 2,920 | 3,117 | 6.7% |
| 3 | Retail salespersons | 2,196 | 2,096 | 2,555 | 21.9% |
| 4 | Customer service representatives | 1,446 | 1,576 | 1,750 | 11.0% |
| 5 | Computer occupations, all other | 1,710 | 1,713 | 1,722 | 0.5% |
| 6 | First-line supervisors of retail sales workers | 1,390 | 1,403 | 1,653 | 17.8% |
| 7 | Sales representatives, wholesale and manufacturing, except technical and scientific products | 1,363 | 1,350 | 1,626 | 20.4% |
| 8 | Heavy and tractor-trailer truck drivers | 1,699 | 1,766 | 1,584 | -10.3% |
| 9 | Laborers and freight, stock, and material movers, hand | 1,030 | 1,171 | 1,327 | 13.3% |
| 10 | Maintenance and repair workers, general | 1,063 | 1,095 | 1,251 | 14.2% |
| All occupations | | 87,435 | 91,776 | 104,616 | 14.0% |

Source: Lightcast, 2025.



Positive Change in Demand by Jobs Postings in DFW

| | Occupation | Median Annual Earnings | Median Advertised Salary | Average Monthly Hires | Jun. 2025 Unique Job Postings | Jul. 2025 Unique Job Postings | Month-over-month Change |
|----|---|------------------------|--------------------------|-----------------------|-------------------------------|-------------------------------|-------------------------|
| 1 | Musical Instrument Repairers and Tuners | \$46,714 | Insf. Data | 9 | 2 | 207 | 10250.0% |
| 2 | Psychiatrists | \$207,880 | \$325,376 | 7 | 64 | 266 | 315.6% |
| 3 | Police and Sheriff's Patrol Officers | \$91,303 | \$91,520 | 343 | 143 | 377 | 163.6% |
| 4 | Lawyers | \$158,317 | \$145,280 | 454 | 381 | 705 | 85.0% |
| 5 | Driver/Sales Workers | \$39,490 | \$39,552 | 447 | 411 | 680 | 65.5% |
| 6 | Fast Food and Counter Workers | \$26,469 | \$29,056 | 18,786 | 728 | 1061 | 45.7% |
| 7 | Cashiers | \$29,251 | \$28,032 | 7,233 | 481 | 784 | 63.0% |
| 8 | Medical and Health Services Managers | \$111,677 | \$80,256 | 529 | 901 | 1129 | 25.3% |
| 9 | Financial Managers | \$165,895 | \$129,920 | 783 | 978 | 1226 | 25.4% |
| 10 | Waiters and Waitresses | \$28,505 | \$35,520 | 7,165 | 545 | 761 | 39.6% |
| | All occupations | - | - | - | 91,776 | 104,616 | 14.0% |

Source: Lightcast, 2025.



Negative Change in Demand by Jobs Postings in DFW

| | Occupation | Median Annual Earnings | Median Advertised Salary | Average Monthly Hires | Jun. 2025 Unique Job Postings | Jul. 2025 Unique Job Postings | Month-over-month Change |
|----|---|------------------------|--------------------------|-----------------------|-------------------------------|-------------------------------|-------------------------|
| 1 | Natural Sciences Managers | \$133,032 | \$100,096 | 45 | 121 | 79 | -34.7% |
| 2 | Dentists, General | \$161,647 | \$259,584 | 97 | 181 | 122 | -32.6% |
| 3 | Diagnostic Medical Sonographers | \$92,717 | \$101,632 | 50 | 211 | 148 | -29.9% |
| 4 | Heating, Air Conditioning, and Refrigeration Mechanics and Installers | \$58,319 | \$67,968 | 544 | 346 | 247 | -28.6% |
| 5 | Parts Salespersons | \$35,227 | \$42,624 | 446 | 166 | 122 | -26.5% |
| 6 | Occupational Health and Safety Specialists | \$77,358 | \$97,536 | 245 | 258 | 193 | -25.2% |
| 7 | Compensation, Benefits, and Job Analysis Specialists | \$79,432 | \$77,568 | 133 | 179 | 138 | -22.9% |
| 8 | Civil Engineers | \$98,949 | \$103,168 | 319 | 318 | 263 | -17.3% |
| 9 | Demonstrators and Product Promoters | \$37,213 | \$52,096 | 168 | 224 | 186 | -17.0% |
| 10 | Cardiovascular Technologists and Technicians | \$48,941 | \$111,872 | 37 | 304 | 266 | -12.5% |
| | All occupations | - | - | - | 91,776 | 104,616 | 14.0% |

Source: Lightcast, 2025.





DFW Employment by Industry

| Industry | Jul. 2024 Employment | May. 2025 Employment | Jun. 2025 Employment | Jul. 2025 Employment | Change, Jul. 2024 to Jul. 2025 (%) | Change, Jun. 2025 to Jul. 2025 (%) |
|---|-------------------------|-------------------------|-------------------------|-------------------------|--|--|
| Mining, quarrying, and oil and gas extraction | 110,400 | 112,900 | 112,600 | 113,100 | 2.4% | 0.4% |
| Construction | 146,900 | 148,800 | 149,900 | 149,500 | 1.8% | -0.3% |
| Manufacturing | 313,400 | 309,300 | 310,700 | 310,900 | -0.8% | 0.1% |
| Wholesale and retail trade | 626,100 | 634,200 | 635,800 | 636,400 | 1.6% | 0.1% |
| Transportation and utilities | 260,900 | 259,200 | 258,900 | 258,600 | -0.9% | -0.1% |
| Information | 89,200 | 87,900 | 89,300 | 89,400 | 0.2% | 0.1% |
| Financial activities | 382,900 | 385,000 | 385,000 | 386,500 | 0.9% | 0.4% |
| Professional and business services | 776,100 | 768,800 | 761,900 | 768,300 | -1.0% | 0.8% |
| Education and health services | 506,400 | 522,100 | 526,600 | 523,100 | 3.3% | -0.7% |
| Leisure and hospitality | 434,300 | 443,300 | 446,500 | 442,100 | 1.8% | -1.0% |
| Other services | 142,900 | 142,500 | 143,500 | 142,900 | 0.0% | -0.4% |
| Government | 459,800 | 498,800 | 484,100 | 471,800 | 2.6% | -2.5% |
| Total nonfarm | 4,249,300 | 4,312,800 | 4,304,800 | 4,292,600 | 1.0% | -0.3% |

Numbers may not sum due to rounding. Employment is not seasonally adjusted.

Source: Bureau of Labor Statistics State and Area Employment, Hours, and Earnings, and Current Employment Statistics, September 2025.



DFW vs. U.S. Employment by Industry

| Industry | DFW Jul. 2025 Employment | DFW Jul. 2025 Employment Share (%) | DFW Employment Change, Jul. 2024 to Jul. 2025 (%) | U.S. Jul. 2025 Employment | U.S. Jul. 2025 Employment Share (%) | U.S. Employment Change, Jul. 2024 to Jul. 2025 (%) |
|---|--------------------------------|---|---|---------------------------------|--|--|
| Mining, quarrying, and oil and gas extraction | 113,100 | 2.6% | 2.4% | 621,000 | 0.4% | -1.4% |
| Construction | 149,500 | 3.5% | 1.8% | 8,514,000 | 5.3% | 1.0% |
| Manufacturing | 310,900 | 7.2% | -0.8% | 12,800,000 | 8.0% | -0.8% |
| Wholesale and retail trade | 636,400 | 14.8% | 1.6% | 21,767,800 | 13.7% | 0.2% |
| Transportation and utilities | 258,600 | 6.0% | -0.9% | 7,211,200 | 4.5% | 1.0% |
| Information | 89,400 | 2.1% | 0.2% | 2,954,000 | 1.9% | -0.2% |
| Financial activities | 386,500 | 9.0% | 0.9% | 9,325,000 | 5.9% | 0.9% |
| Professional and business services | 768,300 | 17.9% | -1.0% | 22,659,000 | 14.2% | -0.3% |
| Education and health services | 523,100 | 12.2% | 3.3% | 27,092,000 | 17.0% | 3.3% |
| Leisure and hospitality | 442,100 | 10.3% | 1.8% | 17,775,000 | 11.2% | 1.2% |
| Other services | 142,900 | 3.3% | 0.0% | 6,115,000 | 3.8% | 1.0% |
| Government | 471,800 | 11.0% | 2.6% | 22,376,000 | 14.1% | 0.8% |
| Total nonfarm | 4,292,600 | 100.0% | 1.0% | 159,210,000 | 100.0% | 0.9% |

Numbers may not sum due to rounding. Employment is not seasonally adjusted.
Source: Bureau of Labor Statistics State and Area Employment, Hours, and Earnings, and Current Employment Statistics, September 2025.

SUBSCRIBE

to the
Economic Development Update
newsletter

QUESTIONS?

economicengine@utdallas.edu
economicengine.utdallas.edu