



DFW  
LABOR MARKET  
UPDATE  
**June 2025**

Published August 13, 2025

# SUMMARY

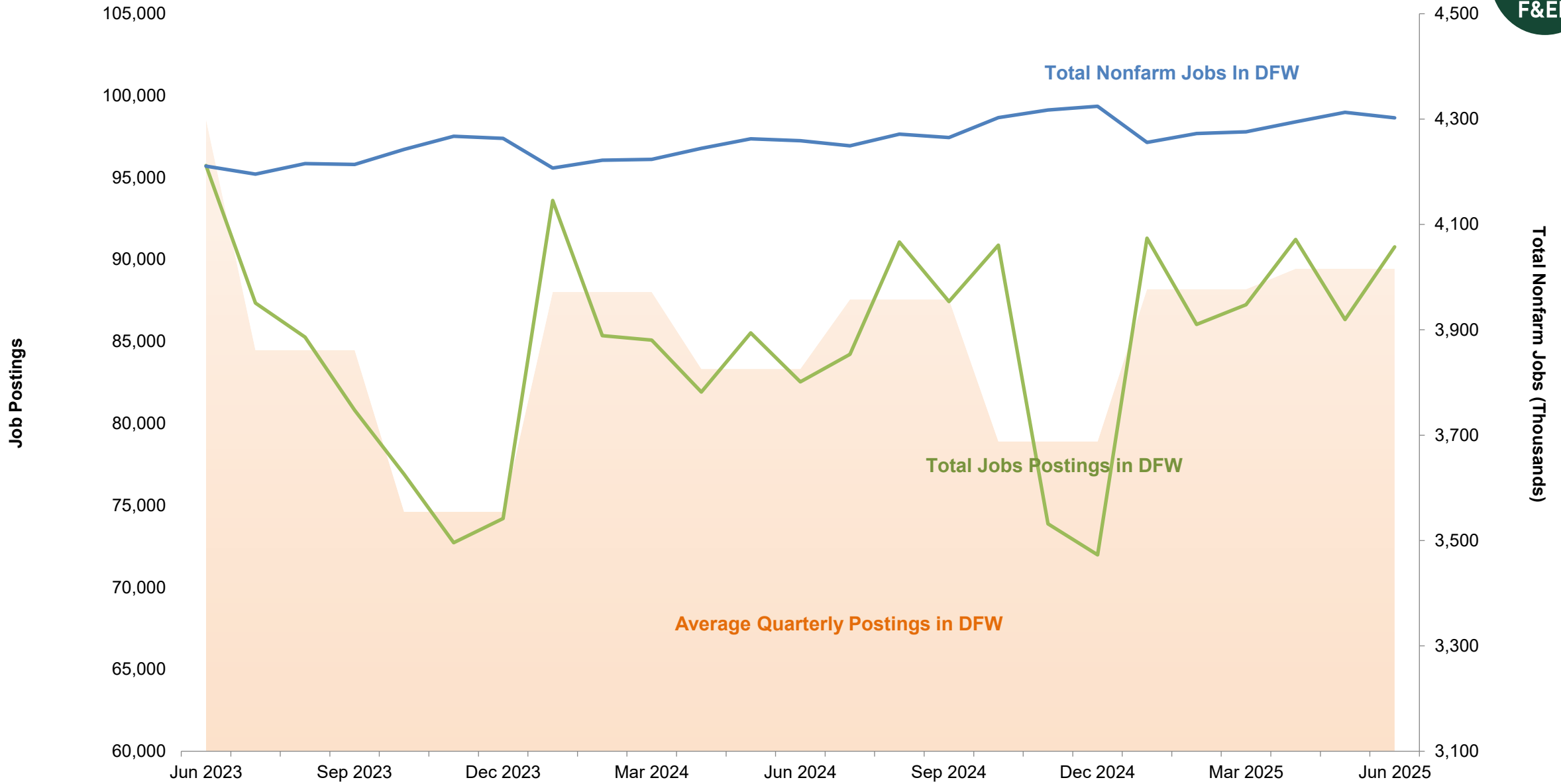
- From May to June, the DFW labor market lost **10,300** jobs, reducing its total workforce to **4,302,500**.
- The **education and health services** sector saw its employment grow by **0.9%**, while the **government sector** experienced a significant decline of **2.6%**.
- Unemployment rates increased slightly for **DFW** (3.7% to 3.8%), **Texas** (4% to 4.1%), and the **U.S.** (4% to 4.4%).
- Overall job postings increased by **4.4%** in June. Postings for **registered nurses** saw a large gain of over 15.1%, while **software developers** experienced a **7.4%** loss.
- The fastest growing occupation was **family medicine physicians**, with a massive **221.3%** increase in new postings.
- In contrast, **market research analysts** saw the largest decrease in job postings, at 28.2%.
- The Consumer Price Index (CPI) for DFW in June is not yet available. However, inflation increased in **Texas (0.249%)**, the **Southern Region (0.26%)**, and the **U.S. (0.34%)**.

For deeper analysis of these dynamics, see the Federal Reserve Bank of Dallas' [Texas Employment Forecast](#), [DFW Economic Indicators](#), and the Bureau of Labor Statistics' [DFW](#) and [Southwest](#) CPI releases.



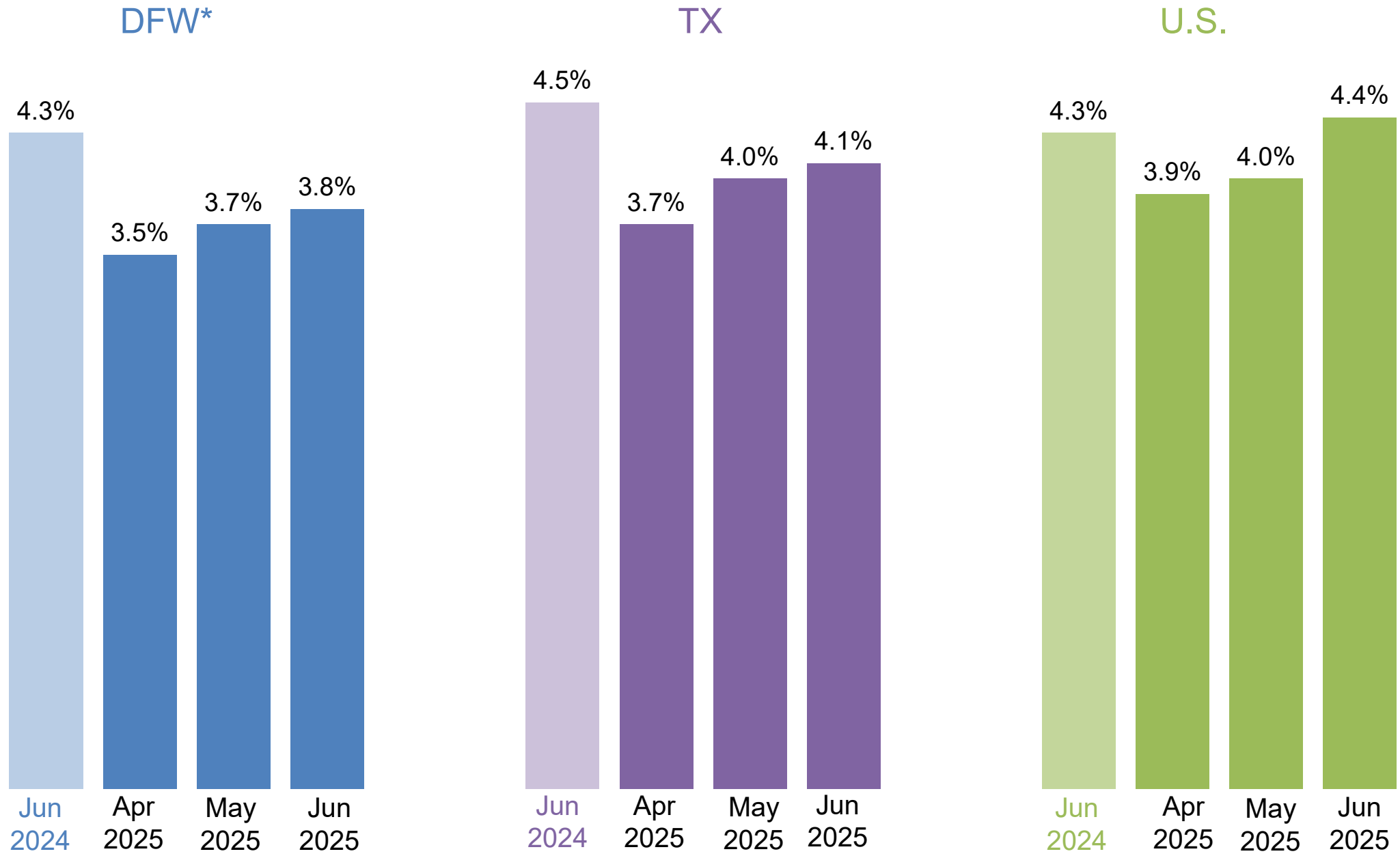


# DFW – Job Postings vs. Nonfarm Jobs



\* DFW includes Collin, Dallas, Denton, Ellis, Hunt, Johnson, Kaufman, Parker, Rockwall, Tarrant, and Wise counties.  
 Source: Bureau of Labor Statistics State and Area Employment, Hours, and Earnings, August 2025. Lightcast, 2025.

# Unemployment Rates\* in DFW, Texas, and U.S.



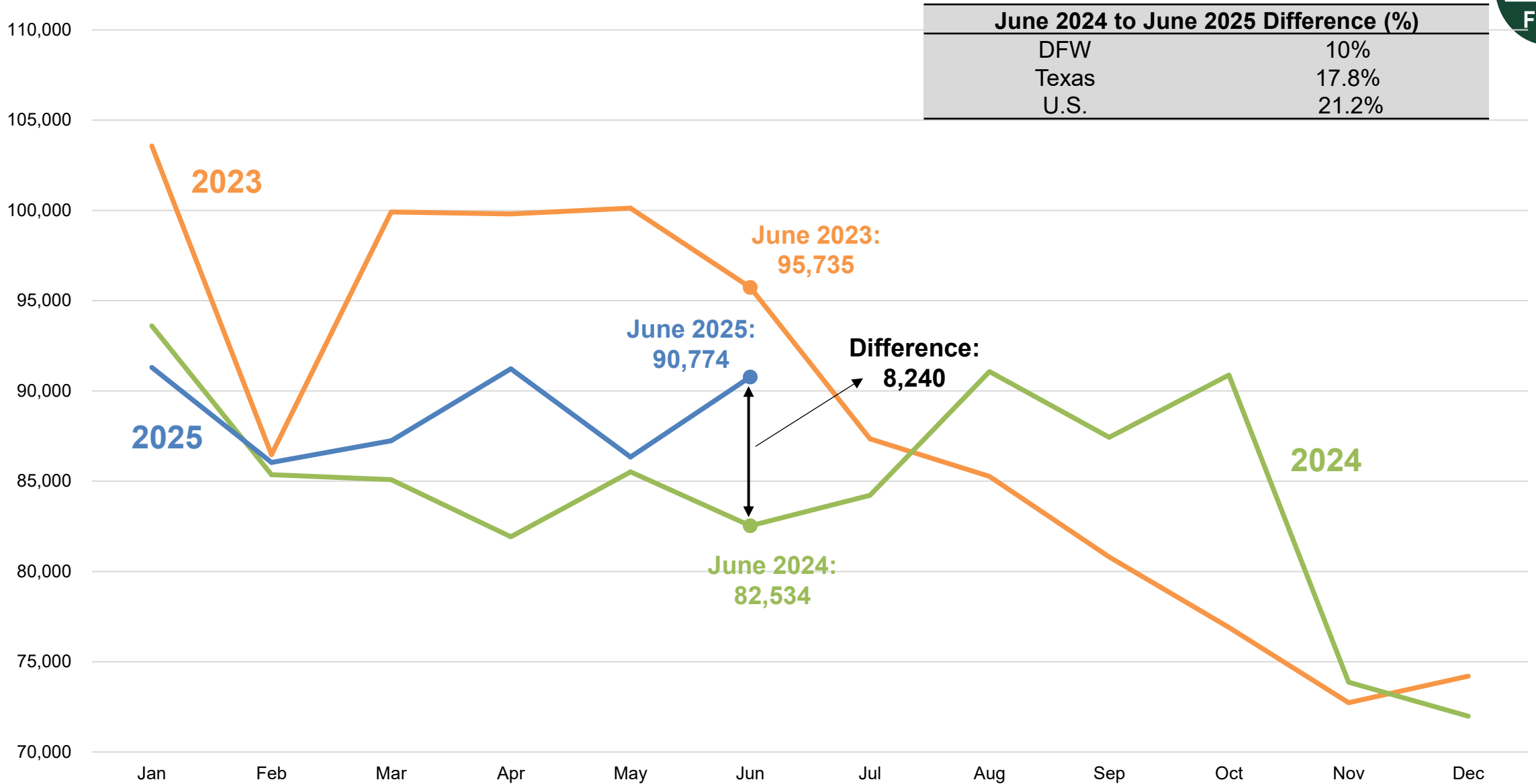
\*Not seasonally adjusted.

Source: Bureau of Labor Statistics, Labor Force Statistics, August 2025.

# DFW Total Job Postings Over the Years



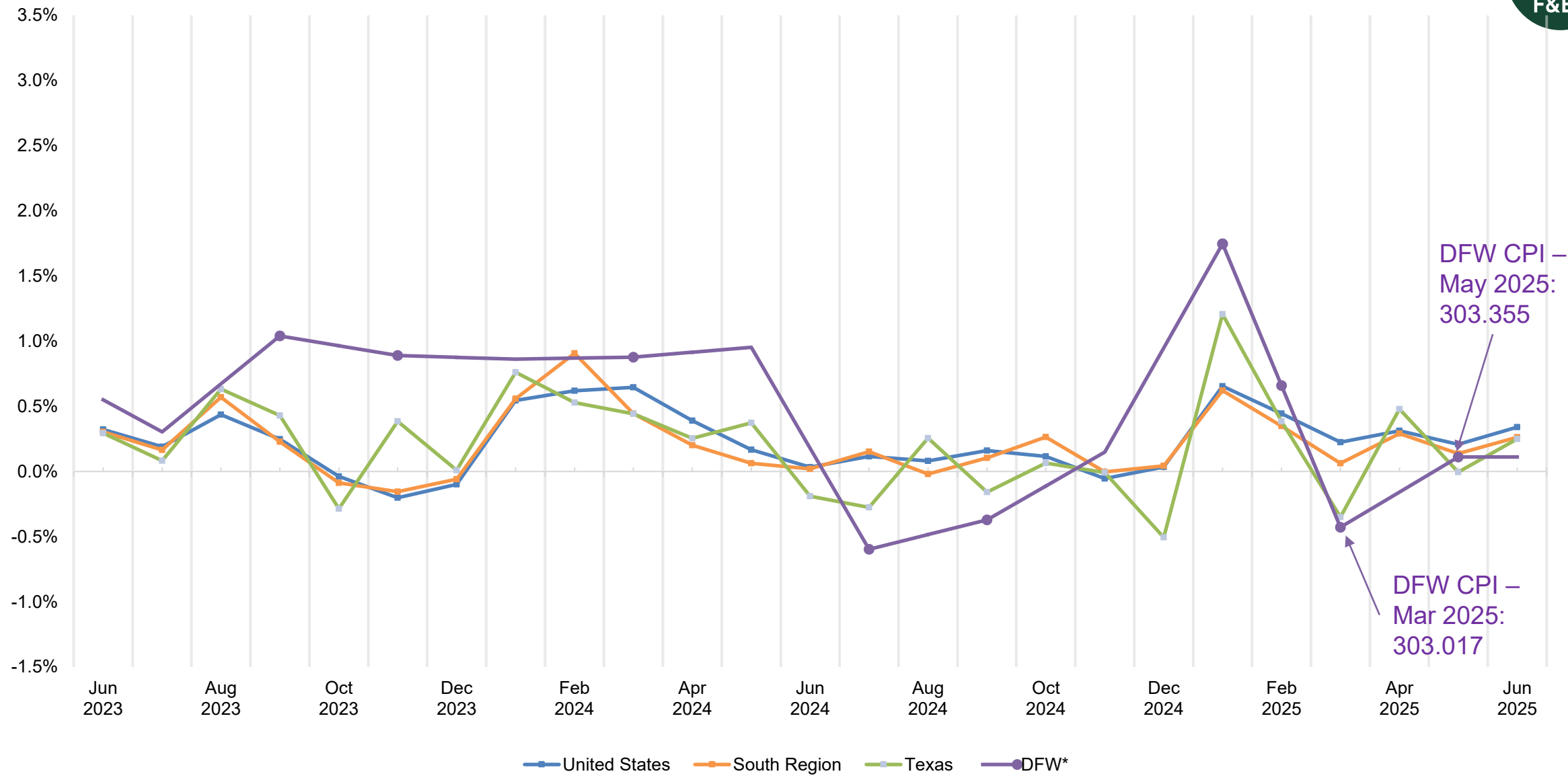
Job Postings





# Change in Consumer Price Index

Monthly Change in Consumer Price Index



DFW CPI –  
May 2025:  
303.355

DFW CPI –  
Mar 2025:  
303.017

Note: Data for DFW is reported every other month. All other figures are reported monthly.  
 Sources: Texas data sourced from the Texas Comptroller of Public Accounts, *Key Economic Indicators*, August 2025.  
 All data for the U.S., South and DFW sourced from the Bureau of Labor Statistics, *CPI for All Urban Consumers (CPI-U)*, August 2025, and is not seasonally adjusted.

# Top Occupations by Job Postings in DFW

Occupation	Median Annual Earnings	Median Advertised Salary	Average Monthly Hires	Jun. 2024 Unique Job Postings	Jun. 2025 Unique Job Postings	Change, Jun. 2024 to Jun. 2025 (%)
1 Registered nurses	\$98,548	\$87,936	2,923	4,406	4,502	2.2%
2 Software developers	\$131,982	\$129,792	3,086	2,590	2,907	12.2%
3 Retail salespersons	\$31,929	\$34,688	6,874	2,264	2,016	-11.0%
4 Computer occupations, all other	\$120,914	\$142,208	815	1,374	1,699	23.7%
5 Heavy and tractor-trailer truck drivers	\$57,250	\$78,208	3,610	1,464	1,754	19.8%
6 Customer service representatives	\$42,305	\$40,576	6,553	1,338	1,550	15.8%
7 Sales representatives, wholesale and manufacturing, except technical and scientific products	\$46,442	\$45,440	1,058	1,364	1,377	1.0%
8 First-line supervisors of retail sales workers	\$63,768	\$80,256	803	1,220	1,367	12.0%
9 Maintenance and repair workers, general	\$47,017	\$50,048	1,953	1,186	1,085	-8.5%
10 Project management specialists	\$38,378	\$37,504	7,986	1,065	1,138	6.9%
<b>All occupations</b>	-	-	-	82,519	90,774	<b>10.0%</b>

Source: Lightcast, 2025.



# Top Occupations by Job Postings in DFW

	Occupation	Apr. 2025 Unique Job Postings	May. 2025 Unique Job Postings	Jun. 2025 Unique Job Postings	Change, May. 2025 to Jun. 2025 (%)
1	Registered nurses	5,013	3,910	4,502	15.1%
2	Software developers	3,161	3,141	2,907	-7.4%
3	Retail salespersons	2,046	2,112	2,016	-4.5%
4	Computer occupations, all other	1,658	1,691	1,699	0.5%
5	Heavy and tractor-trailer truck drivers	1,845	1,686	1,754	4.0%
6	Customer service representatives	1,741	1,429	1,550	8.5%
7	Sales representatives, wholesale and manufacturing, except technical and scientific products	1,371	1,369	1,377	0.6%
8	First-line supervisors of retail sales workers	1,390	1,361	1,367	0.4%
9	Maintenance and repair workers, general	1,132	1,052	1,085	3.1%
10	Project management specialists	1,143	1,019	1,138	11.7%
	<b>All occupations</b>	<b>91,214</b>	<b>86,342</b>	<b>90,774</b>	<b>5.1%</b>

Source: Lightcast, 2025.



## Positive Change in Demand by Jobs Postings in DFW

	Occupation	Median Annual Earnings	Median Advertised Salary	Average Monthly Hires	May. 2025 Unique Job Postings	Jun. 2025 Unique Job Postings	Month-over-month Change
1	Family Medicine Physicians	\$133,032	\$182,016	45	108	347	221.3%
2	Logisticians	\$107,899	\$100,736	211	429	663	54.5%
3	Compliance Officers	\$133,719	\$125,184	269	275	402	46.2%
4	Special Education Teachers, All Other	\$79,930	\$110,848	148	467	614	31.5%
5	Production Workers, All Other	\$34,763	\$39,552	494	511	626	22.5%
6	Human Resources Specialists	\$38,202	\$37,504	1,596	566	711	25.6%
7	Laborers and Freight, Stock, and Material Movers, Hand	\$94,822	\$105,728	1,697	1016	1155	13.7%
8	Food Preparation Workers	\$30,657	\$27,136	2,342	415	533	28.4%
9	Food Service Managers	\$65,806	\$52,608	277	804	920	14.4%
10	Sales Managers	\$61,575	\$64,896	2,154	899	1026	14.1%
	<b>All occupations</b>	-	-	-	<b>86,342</b>	<b>90,774</b>	<b>5.1%</b>

Source: Lightcast, 2025.



## Negative Change in Demand by Jobs Postings in DFW

	Occupation	Median Annual Earnings	Median Advertised Salary	Average Monthly Hires	May. 2025 Unique Job Postings	Jun. 2025 Unique Job Postings	Month-over-month Change
1	Market Research Analysts and Marketing Specialists	\$28,679	\$32,256	1,273	476	342	-28.2%
2	Dishwashers	\$32,166	\$32,640	1,181	319	235	-26.3%
3	Secondary School Teachers, Except Special and Career/Technical Education	\$36,494	\$32,640	6,896	570	441	-22.6%
4	Database Administrators	\$49,873	\$76,160	295	435	340	-21.8%
5	Property, Real Estate, and Community Association Managers	\$135,780	\$142,080	111	444	348	-21.6%
6	Janitors and Cleaners, Except Maids and Housekeeping Cleaners	\$28,505	\$36,544	7,165	675	539	-20.1%
7	Speech-Language Pathologists	\$86,376	\$101,632	214	430	349	-18.8%
8	Construction Managers	\$29,251	\$29,056	7,233	555	461	-16.9%
9	Marketing Managers	\$147,981	\$140,160	872	741	651	-12.1%
10	Financial Managers	\$119,538	\$129,792	471	965	854	-11.5%
	<b>All occupations</b>	-	-	-	<b>86,342</b>	<b>90,774</b>	<b>5.1%</b>

Source: Lightcast, 2025.





# DFW Employment by Industry

Industry	Jun. 2024 Employment	Apr. 2025 Employment	May. 2025 Employment	Jun. 2025 Employment	Change, Jun. 2024 to Jun. 2025 (%)	Change, Jun. May. 2025 to Jun. 2025 (%)
Mining, quarrying, and oil and gas extraction	110,100	110,800	112,900	112,800	2.5%	-0.1%
Construction	146,600	147,500	148,800	150,600	2.7%	1.2%
Manufacturing	313,400	308,100	309,300	311,000	-0.8%	0.5%
Wholesale and retail trade	626,400	632,500	634,200	634,700	1.3%	0.1%
Transportation and utilities	260,600	257,400	259,200	258,100	-1.0%	-0.4%
Information	89,000	89,000	87,900	88,900	-0.1%	1.1%
Financial activities	380,500	383,300	385,000	384,800	1.1%	-0.1%
Professional and business services	770,700	771,200	768,800	760,500	-1.3%	-1.1%
Education and health services	506,200	520,100	522,100	526,700	4.0%	0.9%
Leisure and hospitality	438,000	437,400	443,300	445,500	1.7%	0.5%
Other services	143,600	140,300	142,500	143,100	-0.3%	0.4%
Government	473,800	497,000	498,800	485,800	2.5%	-2.6%
<b>Total Non-Farm Jobs</b>	<b>4,258,900</b>	<b>4,294,600</b>	<b>4,312,800</b>	<b>4,302,500</b>	<b>1.0%</b>	<b>-0.2%</b>

Numbers may not sum due to rounding. Employment is not seasonally adjusted.

Source: Bureau of Labor Statistics State and Area Employment, Hours, and Earnings, and Current Employment Statistics, August 2025.



# DFW vs. U.S. Employment by Industry

Industry	DFW Jun. 2025 Employment	DFW Jun. 2025 Employment Share (%)	DFW Employment Change, Jun. 2024 to Jun. 2025 (%)	U.S. Jun. 2025 Employment	U.S. Jun. 2025 Employment Share (%)	U.S. Employment Change, Jun. 2024 to Jun. 2025 (%)
Mining, quarrying, and oil and gas extraction	112,800	2.6%	2.5%	626,000	0.4%	-0.2%
Construction	150,600	3.5%	2.7%	8,480,000	5.3%	1.2%
Manufacturing	311,000	7.2%	-0.8%	12,807,000	8.0%	-0.8%
Wholesale and retail trade	634,700	14.8%	1.3%	21,780,500	13.6%	0.3%
Transportation and utilities	258,100	6.0%	-1.0%	7,267,600	4.5%	1.1%
Information	88,900	2.1%	-0.1%	2,955,000	1.8%	-0.4%
Financial activities	384,800	8.9%	1.1%	9,279,000	5.8%	0.9%
Professional and business services	760,500	17.7%	-1.3%	22,695,000	14.2%	-0.2%
Education and health services	526,700	12.2%	4.0%	27,121,000	16.9%	3.3%
Leisure and hospitality	445,500	10.4%	1.7%	17,713,000	11.1%	1.3%
Other services	143,100	3.3%	-0.3%	6,109,000	3.8%	1.0%
Government	485,800	11.3%	2.5%	23,460,000	14.6%	1.2%
<b>Total Non-Farm Jobs</b>	<b>4,302,500</b>	<b>100.0%</b>	<b>1.0%</b>	<b>160,293,000</b>	<b>100.0%</b>	<b>1.0%</b>

Numbers may not sum due to rounding. Employment is not seasonally adjusted.

Source: Bureau of Labor Statistics State and Area Employment, Hours, and Earnings, and Current Employment Statistics, August 2025.

# *An Economic Engine for the Region*

## **Web**

[economicengine.utdallas.edu](http://economicengine.utdallas.edu)

## **Email**

[economicengine@utdallas.edu](mailto:economicengine@utdallas.edu)

## **Newsletter**

[economicengine.utdallas.edu/tools/subscribe](http://economicengine.utdallas.edu/tools/subscribe)