



DFW
LABOR MARKET
UPDATE
May 2025

Published July 9, 2025

SUMMARY

From April to May, the DFW labor market gained **14,600** jobs (net). This represents about **0.34%** of its labor force as it stood as of May, which totaled **4,309,200**. Primary gains in employment were felt most in the **leisure and hospitality** sector which grew by **1.6%**, adding **6,900** jobs. This was followed by **mining, and oil and gas extraction** sector, which grew by **2.2%** and added **2,400** jobs to the local economy. In contrast, the **professional and business services** experienced a decline, losing **4,700** jobs – a loss of **0.6%**.

The local unemployment rate increased in May, with DFW's rate going up from **3.5%** to **3.7%**. The state and national labor markets followed suit, with the Texas rate increasing from **3.7%** to **4%** and the US rate from **3.9%** to **4%**.

Total job postings saw a month-over-month decrease of **4.4%** in May. The top posted job in the region was **registered nurses**, with a month-over-month loss of over **23.7%**, from **5,027** to **3,838** postings. This was followed by **software developers** with **3,298** postings - representing a month-over-month gain of **1.6%**. In terms of fastest growing occupations, **surgical technologists** took first rank with **254** new jobs, representing a month-over-month growth rate of over **128.8%**. In contrast, the fastest shrinking occupation was **drivers/sales workers**, which saw a month-over-month decrease of **33.2%**.

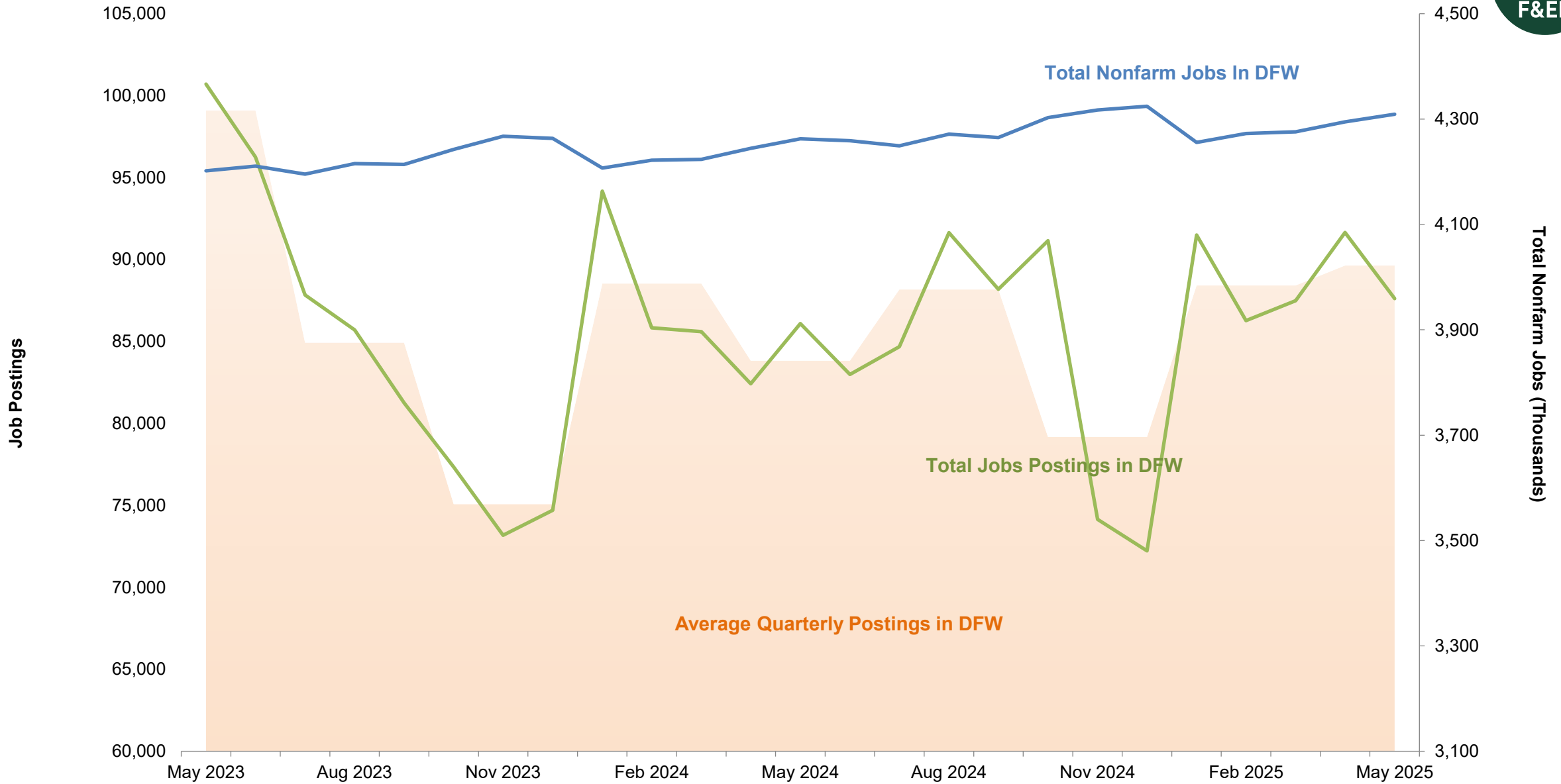
The **Consumer Price Index** for DFW rose slightly by **0.11%**. The CPI for the state of Texas dropped by **0.004%**, Southern Region and U.S experienced an increase of **0.14%** and **0.21%**, respectively.

For deeper analysis of these dynamics, see the Federal Reserve Bank of Dallas' [Texas Employment Forecast](#), [DFW Economic Indicators](#), and the Bureau of Labor Statistics' [DFW](#) and [Southwest](#) CPI releases.



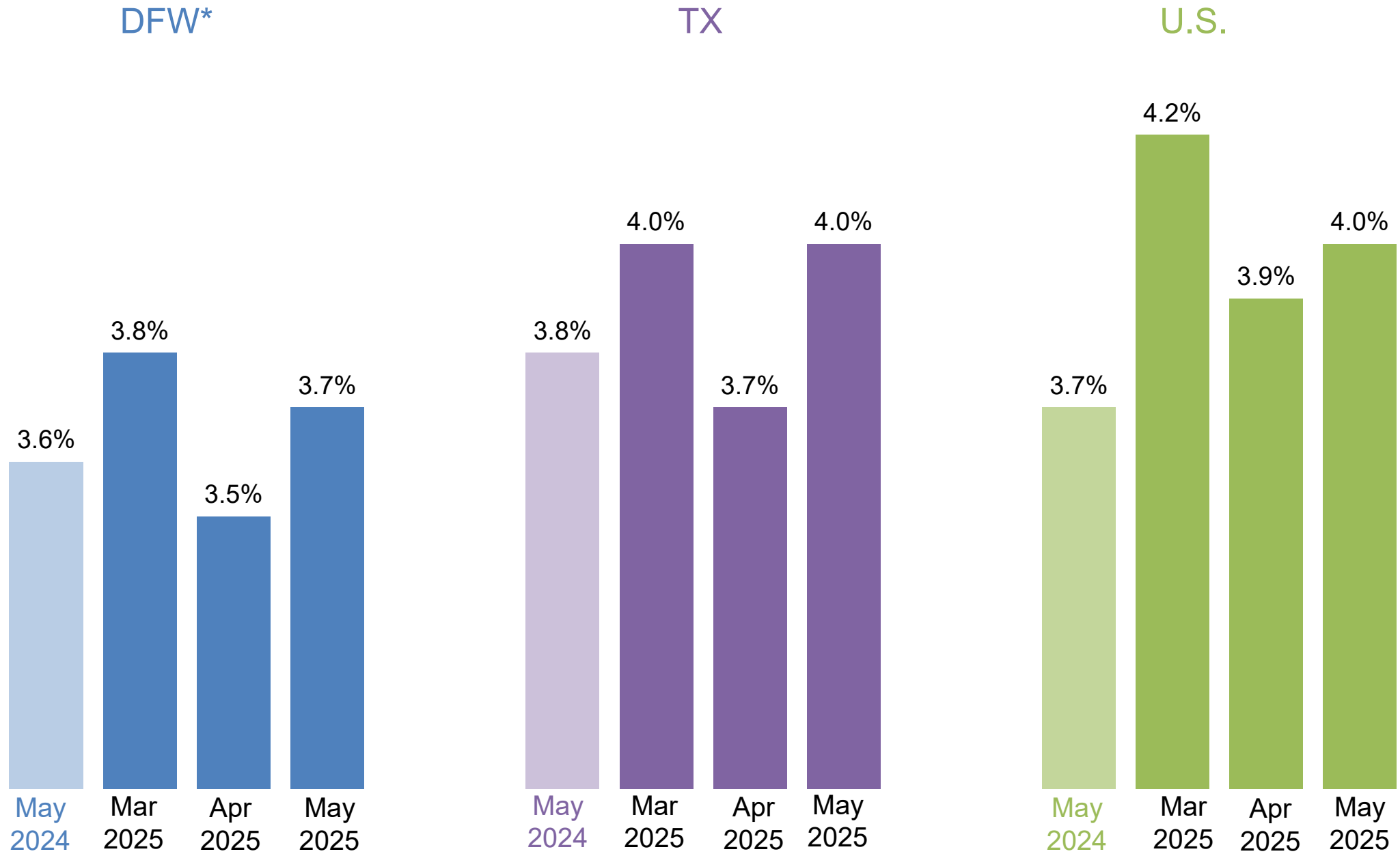


DFW – Job Postings vs. Nonfarm Jobs



* DFW includes Collin, Dallas, Denton, Ellis, Hunt, Johnson, Kaufman, Parker, Rockwall, Tarrant, and Wise counties.
 Source: Bureau of Labor Statistics State and Area Employment, Hours, and Earnings, July 2025. Lightcast, 2025.

Unemployment Rates* in DFW, Texas, and U.S.



*Not seasonally adjusted.

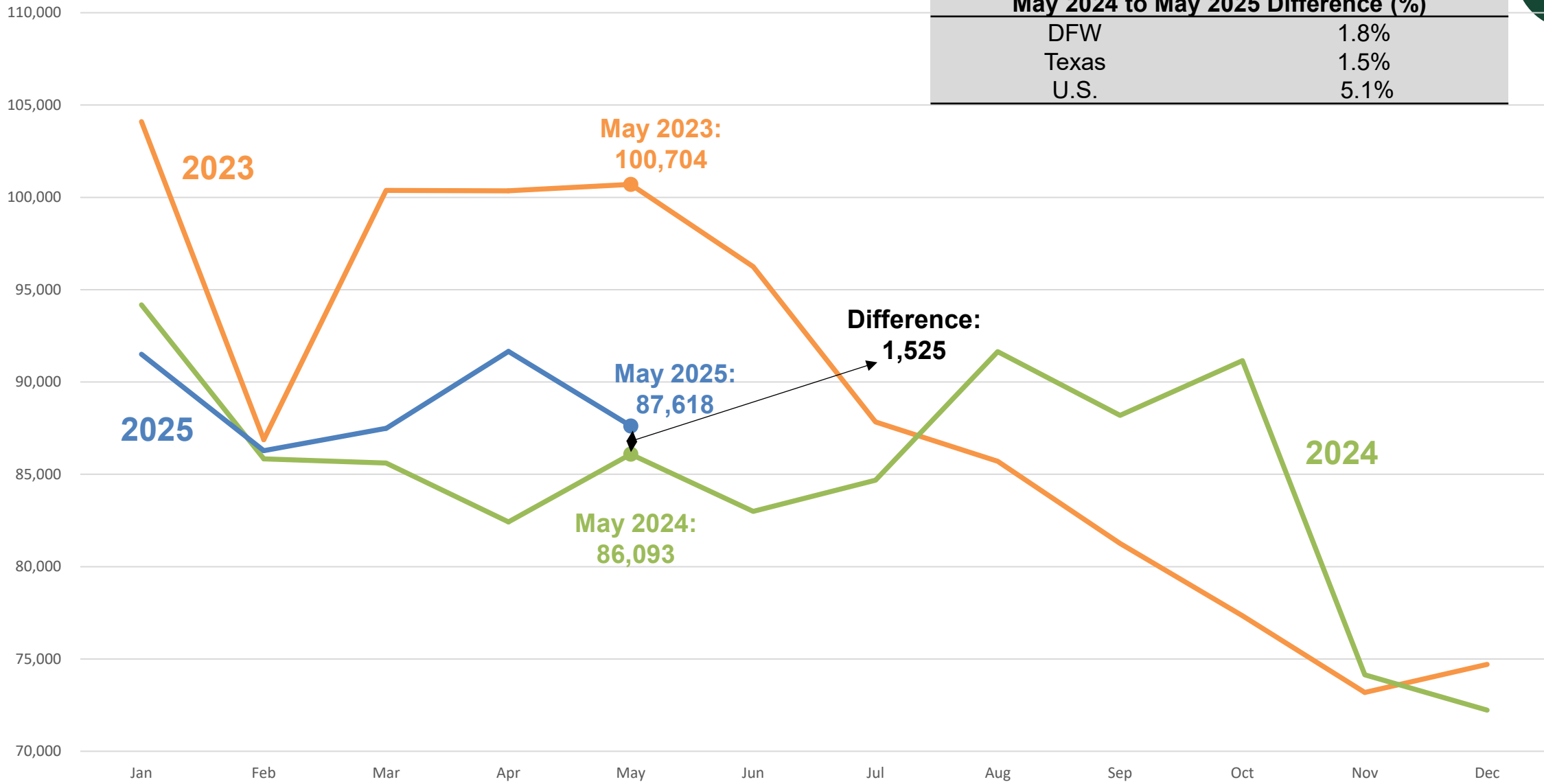
Source: Bureau of Labor Statistics, Labor Force Statistics, July 2025.

DFW Total Job Postings Over the Years



Job Postings

May 2024 to May 2025 Difference (%)	
DFW	1.8%
Texas	1.5%
U.S.	5.1%

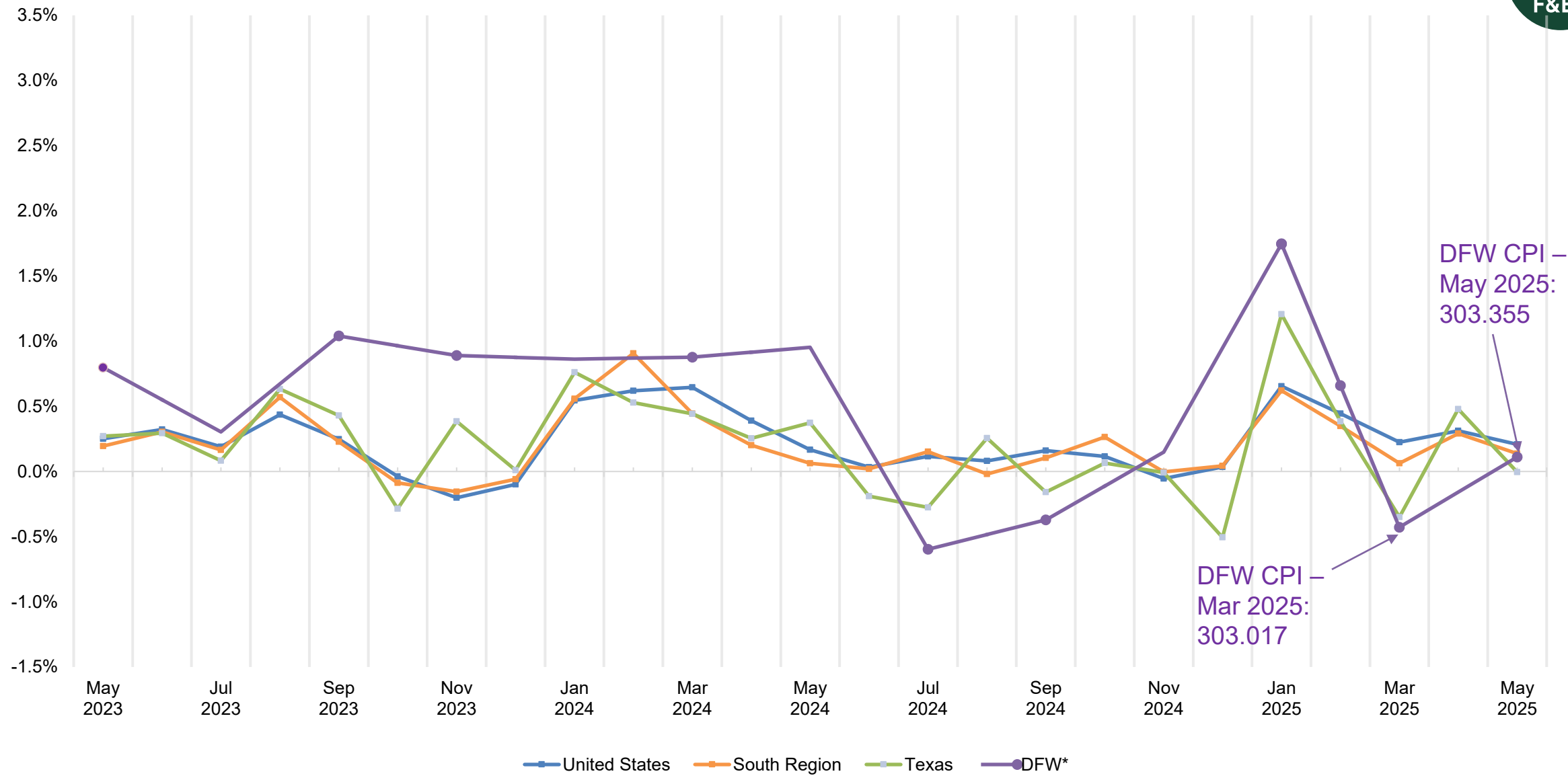


Source: Lightcast, 2025.



Change in Consumer Price Index

Monthly Change in Consumer Price Index



Note: Data for DFW is reported every other month. All other figures are reported monthly.
 Sources: Texas data sourced from the Texas Comptroller of Public Accounts, *Key Economic Indicators*, July 2025.
 All data for the U.S., South and DFW sourced from the Bureau of Labor Statistics, *CPI for All Urban Consumers (CPI-U)*, July 2025, and is not seasonally adjusted.

Top Occupations by Job Postings in DFW

Occupation	Median Annual Earnings	Median Advertised Salary	Average Monthly Hires	May. 2024 Unique Job Postings	May. 2025 Unique Job Postings	Change, May. 2024 to May. 2025 (%)
1 Registered nurses	\$98,522	\$87,936	3,021	3,634	3,838	5.6%
2 Software developers	\$132,024	\$133,888	3,229	2,686	3,298	22.8%
3 Retail salespersons	\$31,918	\$36,480	7,007	2,519	2,330	-7.5%
4 Computer occupations, all other	\$120,926	\$145,280	833	1,515	1,759	16.1%
5 Heavy and tractor-trailer truck drivers	\$57,252	\$78,208	3,753	1,713	1,709	-0.2%
6 Customer service representatives	\$42,298	\$40,576	6,744	1,586	1,445	-8.9%
7 Sales representatives, wholesale and manufacturing, except technical and scientific products	\$63,842	\$80,256	833	1,333	1,435	7.7%
8 First-line supervisors of retail sales workers	\$46,429	\$44,672	1,084	1,440	1,416	-1.7%
9 Maintenance and repair workers, general	\$47,038	\$50,816	2,003	1,143	1,059	-7.3%
10 Project management specialists	\$94,821	\$105,728	1,732	900	1,030	14.4%
All occupations	-	-	-	86,077	87,618	1.8%

Source: Lightcast, 2025.



Top Occupations by Job Postings in DFW

	Occupation	Mar. 2025 Unique Job Postings	Apr. 2025 Unique Job Postings	May. 2025 Unique Job Postings	Change, Apr. 2025 to May. 2025 (%)
1	Registered nurses	3,433	5,027	3,838	-23.7%
2	Software developers	3,057	3,247	3,298	1.6%
3	Retail salespersons	2,089	2,049	2,330	13.7%
4	Computer occupations, all other	1,699	1,726	1,759	1.9%
5	Heavy and tractor-trailer truck drivers	1,616	1,868	1,709	-8.5%
6	Customer service representatives	1,528	1,757	1,445	-17.8%
7	Sales representatives, wholesale and manufacturing, except technical and scientific products	1,519	1,443	1,435	-0.6%
8	First-line supervisors of retail sales workers	1,444	1,380	1,416	2.6%
9	Maintenance and repair workers, general	978	1,133	1,059	-6.5%
10	Project management specialists	982	1,082	1,030	-4.8%
	All occupations	87,471	91,657	87,618	-4.4%

Source: Lightcast, 2025.



Positive Change in Demand by Jobs Postings in DFW

	Occupation	Median Annual Earnings	Median Advertised Salary	Average Monthly Hires	Apr. 2025 Unique Job Postings	May. 2025 Unique Job Postings	Month-over-month Change
1	Surgical Technologists	\$76,753	\$78,592	170	111	254	128.8%
2	Sales and Related Workers, All Other	\$33,647	\$42,624	253	177	315	78.0%
3	Speech-Language Pathologists	\$86,348	\$103,168	217	288	439	52.4%
4	Heating, Air Conditioning, and Refrigeration Mechanics and Installers	\$58,208	\$65,792	552	199	319	60.3%
5	Teaching Assistants, Except Postsecondary	\$28,673	\$32,256	1,294	372	476	28.0%
6	Database Architects	\$135,842	\$142,080	113	352	445	26.4%
7	Postsecondary Teachers	\$87,674	\$65,408	934	286	401	40.2%
8	Marketing Managers	\$148,086	\$139,008	890	600	756	26.0%
9	Data Scientists	\$119,620	\$126,720	480	891	969	8.8%
10	Stockers and Order Fillers	\$36,472	\$35,200	7,150	536	655	22.2%
	All occupations	-	-	-	91,657	87,618	-4.4%

Source: Lightcast, 2025.



Negative Change in Demand by Jobs Postings in DFW

	Occupation	Median Annual Earnings	Median Advertised Salary	Average Monthly Hires	Apr. 2025 Unique Job Postings	May. 2025 Unique Job Postings	Month-over-month Change
1	Driver/Sales Workers	\$39,475	\$38,528	462	554	370	-33.2%
2	Food Service Managers	\$65,836	\$54,912	287	1111	809	-27.2%
3	First-Line Supervisors of Food Preparation and Serving Workers	\$38,204	\$36,480	1,651	769	574	-25.4%
4	Production Workers, All Other	\$34,776	\$39,552	512	630	512	-18.7%
5	Sales Representatives of Services, Except Advertising, Insurance, Financial Services, and Travel	\$61,567	\$60,032	2,205	1040	874	-16.0%
6	Fast Food and Counter Workers	\$26,458	\$29,056	19,292	972	817	-15.9%
7	Automotive Service Technicians and Mechanics	\$53,284	\$50,048	969	626	530	-15.3%
8	Sales Representatives, Wholesale and Manufacturing, Technical and Scientific Products	\$84,209	\$75,648	459	913	773	-15.3%
9	Laborers and Freight, Stock, and Material Movers, Hand	\$38,363	\$37,504	8,335	1149	1023	-11.0%
10	Financial Managers	\$165,974	\$128,384	794	1001	898	-10.3%
	All occupations	-	-	-	91,657	87,618	-4.4%

Source: Lightcast, 2025.





DFW Employment by Industry

Industry	May. 2024 Employment	Mar. 2025 Employment	Apr. 2025 Employment	May. 2025 Employment	Change, May. 2024 to May. 2025 (%)	Change, Apr. 2025 to May. 2025 (%)
Mining, quarrying, and oil and gas extraction	108,600	109,900	110,800	113,200	4.2%	2.2%
Construction	145,000	146,600	147,500	148,600	2.5%	0.7%
Manufacturing	310,900	308,500	308,100	308,800	-0.7%	0.2%
Wholesale and retail trade	622,900	630,500	632,500	634,300	1.8%	0.3%
Transportation and utilities	261,300	260,800	257,400	258,800	-1.0%	0.5%
Information	88,200	89,400	89,000	87,900	-0.3%	-1.2%
Financial activities	378,100	382,600	383,300	384,900	1.8%	0.4%
Professional and business services	774,800	764,700	771,200	766,500	-1.1%	-0.6%
Education and health services	512,000	518,200	520,100	522,100	2.0%	0.4%
Leisure and hospitality	433,100	429,500	437,400	444,300	2.6%	1.6%
Other services	140,700	140,200	140,300	141,100	0.3%	0.6%
Government	486,800	494,900	497,000	498,700	2.4%	0.3%
Total nonfarm	4,262,400	4,275,800	4,294,600	4,309,200	1.1%	0.3%

Numbers may not sum due to rounding. Employment is not seasonally adjusted.

Source: Bureau of Labor Statistics State and Area Employment, Hours, and Earnings, and Current Employment Statistics, July 2025.



DFW vs. U.S. Employment by Industry

Industry	DFW May. 2025 Employment	DFW May. 2025 Employment Share (%)	DFW Employment Change, May. 2024 to May. 2025 (%)	U.S. May. 2025 Employment	U.S. May. 2025 Employment Share (%)	U.S. Employment Change, May. 2024 to May. 2025 (%)
Mining, quarrying, and oil and gas extraction	113,200	2.6%	4.2%	623,000	0.4%	-0.2%
Construction	148,600	3.4%	2.5%	8,352,000	5.2%	1.4%
Manufacturing	308,800	7.2%	-0.7%	12,738,000	8.0%	-0.7%
Wholesale and retail trade	634,300	14.7%	1.8%	21,696,200	13.6%	0.3%
Transportation and utilities	258,800	6.0%	-1.0%	7,253,100	4.5%	1.1%
Information	87,900	2.0%	-0.3%	2,934,000	1.8%	-0.2%
Financial activities	384,900	8.9%	1.8%	9,224,000	5.8%	1.1%
Professional and business services	766,500	17.8%	-1.1%	22,633,000	14.1%	-0.2%
Education and health services	522,100	12.1%	2.0%	27,289,000	17.1%	3.5%
Leisure and hospitality	444,300	10.3%	2.6%	17,307,000	10.8%	1.4%
Other services	141,100	3.3%	0.3%	6,063,000	3.8%	1.3%
Government	498,700	11.6%	2.4%	23,846,000	14.9%	1.1%
Total nonfarm	4,309,200	100.0%	1.1%	159,958,000	100.0%	1.1%

Numbers may not sum due to rounding. Employment is not seasonally adjusted.

Source: Bureau of Labor Statistics State and Area Employment, Hours, and Earnings, and Current Employment Statistics, July 2025.

An Economic Engine for the Region

Web

economicengine.utdallas.edu

Email

economicengine@utdallas.edu

Newsletter

economicengine.utdallas.edu/tools/subscribe