



DFW LABOR MARKET UPDATE **April 2025**

Published June 11, 2025

SUMMARY

From March to April, the DFW labor market gained **20,700** jobs (net). This represents about **0.48%** of its labor force as it stood as of April, which totaled **4,296,500**. Primary gains in employment were felt most in the **leisure and hospitality** sector which grew by **1.8%**, adding **7,700** jobs. This was followed by **professional and business services** sector, which grew by **1%** and added **7,600** jobs to the local economy. In contrast, the **transportation and utilities** experienced a decline, losing **2,200** jobs – a loss of **0.8%**.

The local unemployment rate decreased in April, with DFW's rate going down from **3.8%** to **3.5%**. The state and national labor markets followed suit, with the Texas rate falling from **4%** to **3.7%** and the US rate from **4.2%** to **3.9%**.

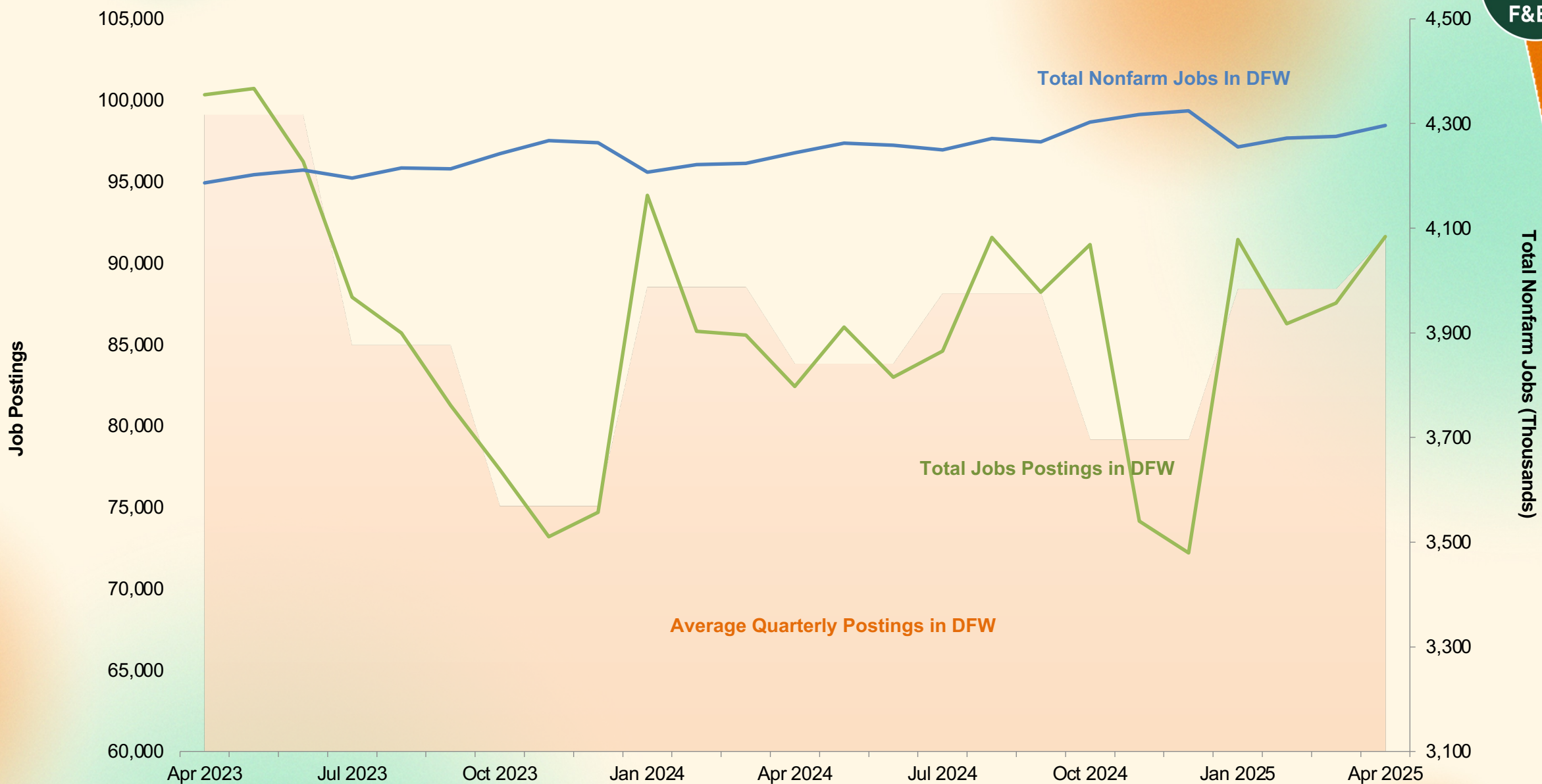
Total job postings saw a month-over-month increase of **4.6%** in April. The top posted job in the region was **registered nurses**, with a month-over month gain of over **45.9%**, from **3,442** to **5,021** postings. This was followed by **software developers** with **3,238** postings - representing a month-over-month gain of **6.3%**. In terms of fastest growing occupations, **food service managers** took first rank with **1,116** new jobs, representing a month-over-month growth rate of over **49.2%**. In contrast, the fastest shrinking occupation was **emergency medical technicians**, which saw a month-over-month decrease of **82.3%**.

The **Consumer Price Index** for DFW will not be released for April. The CPI for the state of Texas, Southern Region and U.S experienced an increase of **0.48%**, **0.29%** and **0.31%**, **respectively**.

For deeper analysis of these dynamics, see the Federal Reserve Bank of Dallas' [Texas Employment Forecast](#), [DFW Economic Indicators](#), and the Bureau of Labor Statistics' [DFW](#) and [Southwest](#) CPI releases.



DFW – Job Postings vs. Nonfarm Jobs



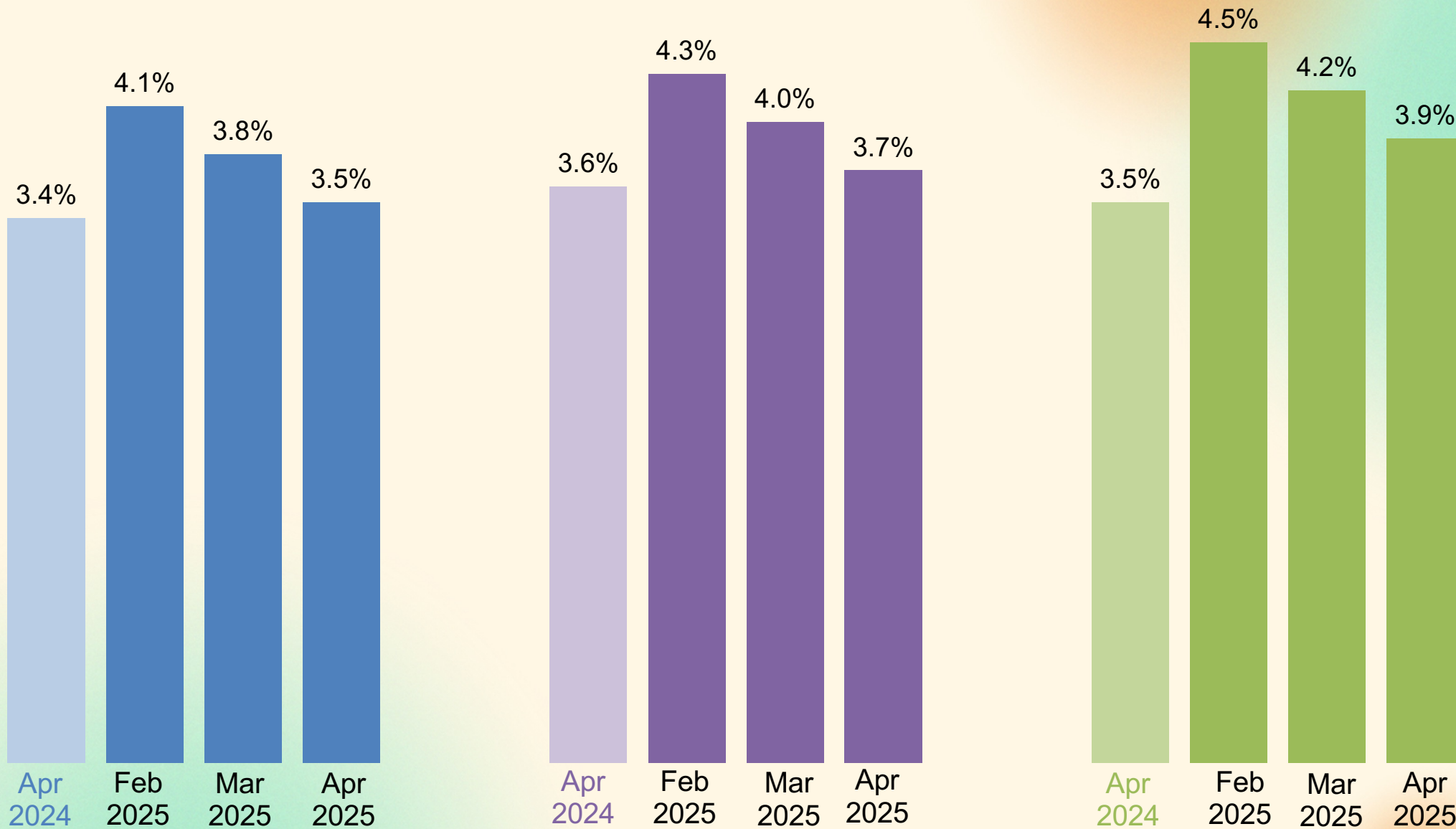
* DFW includes Collin, Dallas, Denton, Ellis, Hunt, Johnson, Kaufman, Parker, Rockwall, Tarrant, and Wise counties.
Source: Bureau of Labor Statistics State and Area Employment, Hours, and Earnings, June 2025. Lightcast, 2025.

Unemployment Rates* in DFW, Texas, and U.S.

DFW*

TX

U.S.



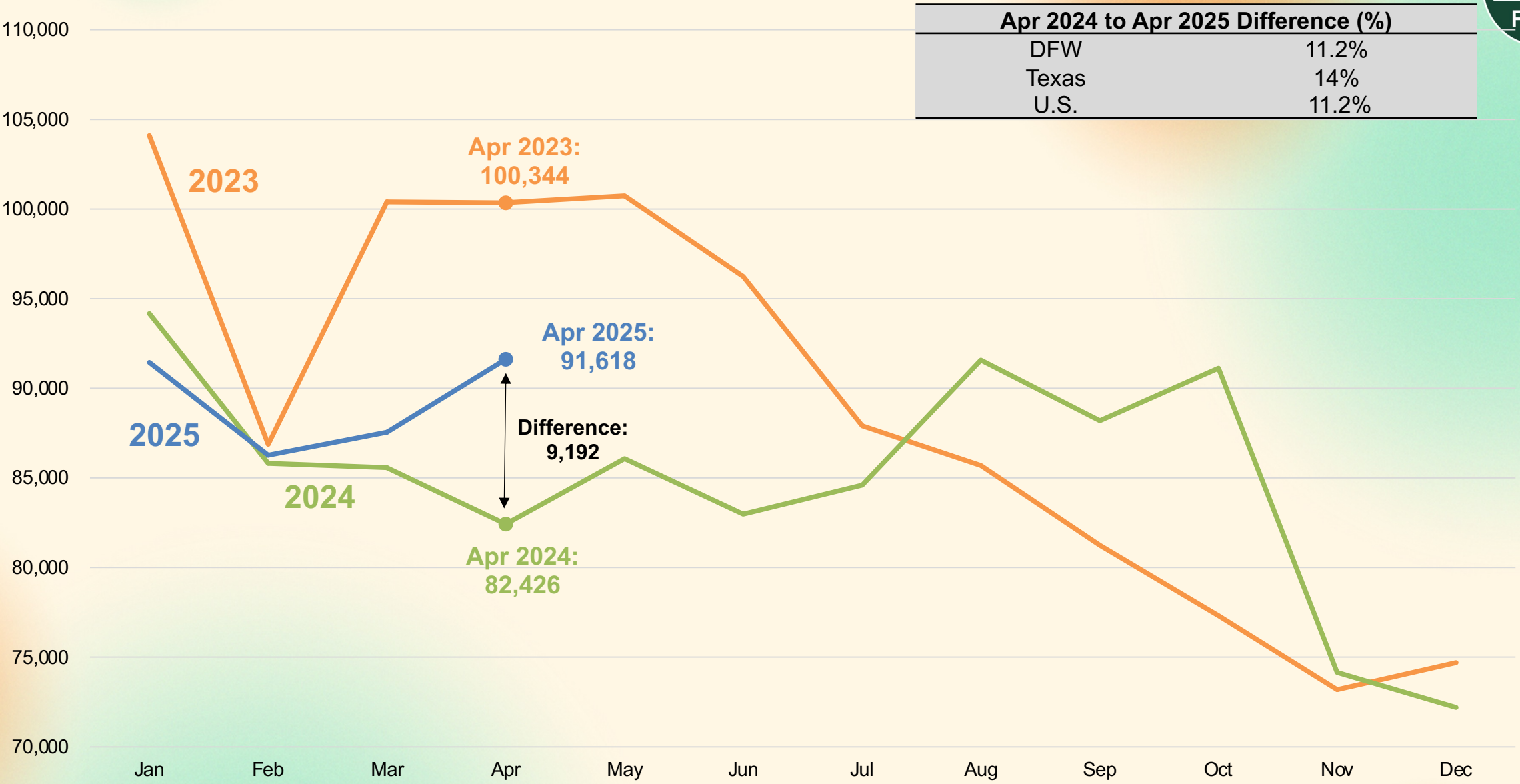
*Not seasonally adjusted.

Source: Bureau of Labor Statistics, Labor Force Statistics, June 2025.

DFW Total Job Postings Over the Years



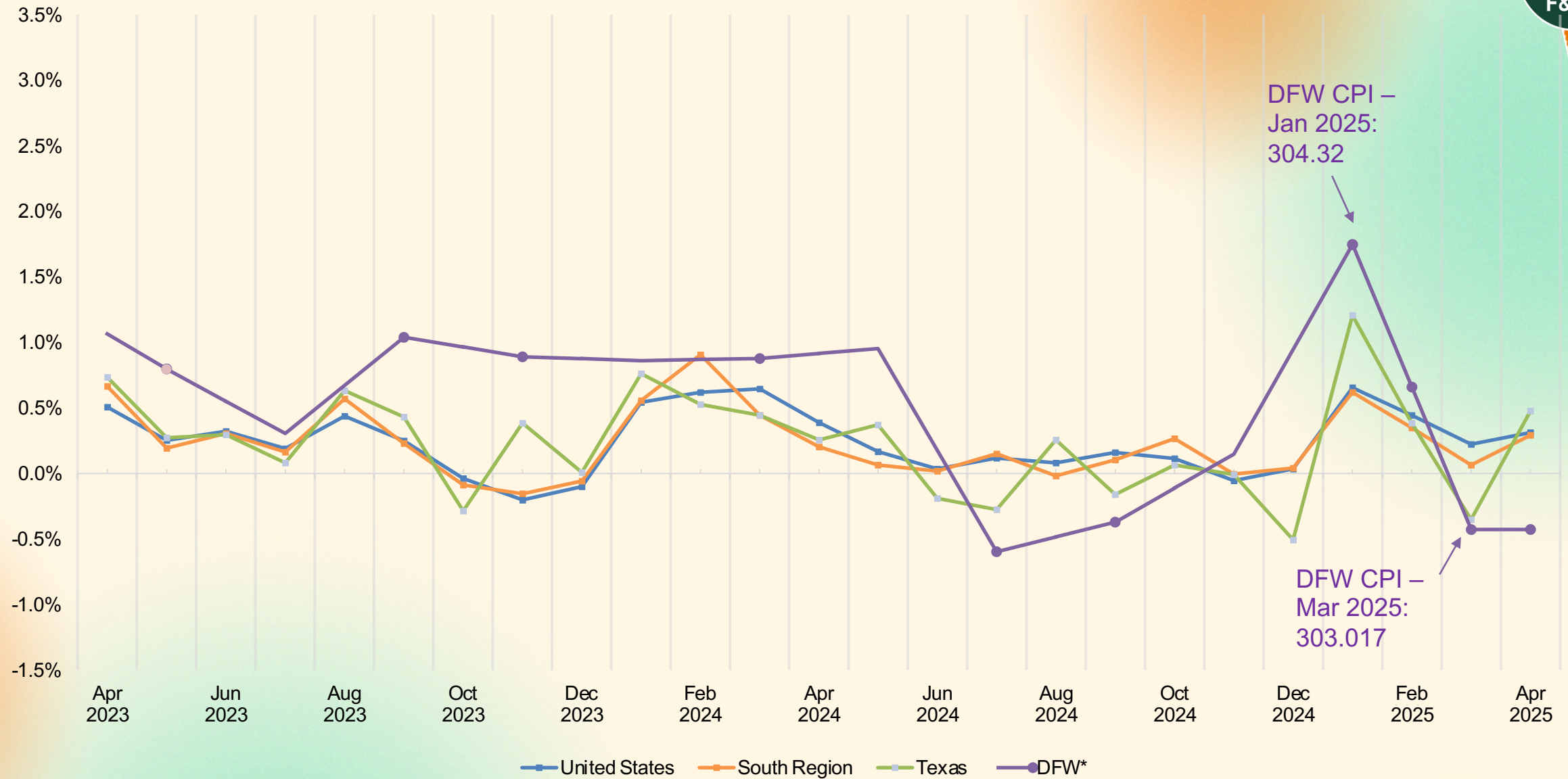
Job Postings



Apr 2024 to Apr 2025 Difference (%)	
DFW	11.2%
Texas	14%
U.S.	11.2%

Change in Consumer Price Index

Monthly Change in Consumer Price Index



Note: Data for DFW is reported every other month. All other figures are reported monthly.

Sources: Texas data sourced from the Texas Comptroller of Public Accounts, *Key Economic Indicators*, June 2025.

All data for the U.S., South and DFW sourced from the Bureau of Labor Statistics, *CPI for All Urban Consumers (CPI-U)*, June 2025, and is not seasonally adjusted.

Top Occupations by Job Postings in DFW

Occupation		Median Annual Earnings	Median Advertised Salary	Average Monthly Hires	Apr. 2024 Unique Job Postings	Apr. 2025 Unique Job Postings	Change, Apr. 2024 to Apr. 2025 (%)
1	Registered nurses	\$98,522	\$87,424	3,021	3,225	5,021	55.7%
2	Software developers	\$132,024	\$133,888	3,229	2,286	3,238	41.6%
3	Retail salespersons	\$31,918	\$34,688	7,007	2,362	2,048	-13.3%
4	Computer occupations, all other	\$120,926	\$145,280	833	1,235	1,713	38.7%
5	Heavy and tractor-trailer truck drivers	\$57,252	\$75,648	3,753	1,534	1,899	23.8%
6	Unclassified occupation	\$0	\$64,896	0	1,829	1,708	-6.6%
7	Customer service representatives	\$42,298	\$40,576	6,744	1,525	1,759	15.3%
8	Sales representatives, wholesale and manufacturing, except technical and scientific products	\$63,842	\$76,672	833	1,267	1,441	13.7%
9	First-line supervisors of retail sales workers	\$46,429	\$43,648	1,084	1,420	1,378	-3.0%
10	General and operations managers	\$108,599	\$83,328	5,395	887	1,063	19.8%
All occupations		-	-	-	82,414	91,618	11.2%

Source: Lightcast, 2025.

Top Occupations by Job Postings in DFW

	Occupation	Feb. 2025 Unique Job Postings	Mar. 2025 Unique Job Postings	Apr. 2025 Unique Job Postings	Change, Mar. 2025 to Apr. 2025 (%)
1	Registered nurses	3,974	3,442	5,021	45.9%
2	Software developers	3,013	3,046	3,238	6.3%
3	Retail salespersons	2,019	2,115	2,048	-3.2%
4	Computer occupations, all other	1,562	1,692	1,713	1.2%
5	Heavy and tractor-trailer truck drivers	1,704	1,620	1,899	17.2%
6	Unclassified occupation	1,554	1,609	1,708	6.2%
7	Customer service representatives	1,459	1,531	1,759	14.9%
8	Sales representatives, wholesale and manufacturing, except technical and scientific products	1,528	1,524	1,441	-5.4%
9	First-line supervisors of retail sales workers	1,397	1,442	1,378	-4.4%
10	General and operations managers	954	1,099	1,063	-3.3%
	All occupations	86,250	87,550	91,618	4.6%

Source: Lightcast, 2025.

Positive Change in Demand by Jobs Postings in DFW

	Occupation	Median Annual Earnings	Median Advertised Salary	Average Monthly Hires	Mar. 2025 Unique Job Postings	Apr. 2025 Unique Job Postings	Month-over-month Change
1	Food Service Managers	\$65,836	\$54,912	287	748	1116	49.2%
2	Physical Therapists	\$107,971	\$100,608	214	354	530	49.7%
3	Driver/Sales Workers	\$39,475	\$38,528	462	447	558	24.8%
4	First-Line Supervisors of Food Preparation and Serving Workers	\$38,204	\$36,480	1,651	576	769	33.5%
5	Fast Food and Counter Workers	\$26,458	\$28,800	19,292	841	1077	28.1%
6	Project Management Specialists	\$94,821	\$105,344	1,732	982	1085	10.5%
7	Maintenance and Repair Workers, General	\$47,038	\$50,048	2,003	977	1129	15.6%
8	Financial Managers	\$165,974	\$129,920	794	903	1002	11.0%
9	Computer Network Architects	\$132,923	\$121,600	308	361	457	26.6%
10	Sales Managers	\$137,675	\$107,392	1,091	891	981	10.1%
	All occupations	-	-	-	87,550	91,618	4.6%

Source: Lightcast, 2025.

Negative Change in Demand by Jobs Postings in DFW

	Occupation	Median Annual Earnings	Median Advertised Salary	Average Monthly Hires	Mar. 2025 Unique Job Postings	Apr. 2025 Unique Job Postings	Month-over-month Change
1	Emergency Medical Technicians	\$38,905	\$43,648	168	164	29	-82.3%
2	Parts Salespersons	\$35,565	\$42,624	461	204	118	-42.2%
3	Food Preparation Workers	\$30,654	\$28,032	2,421	519	323	-37.8%
4	Personal Financial Advisors	\$92,028	\$88,320	168	391	288	-26.3%
5	Speech-Language Pathologists	\$86,348	\$103,168	217	391	288	-26.3%
6	Postsecondary Teachers	\$87,674	\$64,384	934	371	285	-23.2%
7	Janitors and Cleaners, Except Maids and Housekeeping Cleaners	\$34,269	\$35,456	3,270	735	618	-15.9%
8	Home Health and Personal Care Aides	\$25,947	\$31,104	5,351	815	704	-13.6%
9	Waiters and Waitresses	\$28,529	\$36,480	7,401	790	685	-13.3%
10	Marketing Managers	\$148,086	\$139,008	890	691	605	-12.4%
	All occupations	-	-	-	87,550	91,618	4.6%

Source: Lightcast, 2025.



DFW Employment by Industry

Industry	Apr. 2024 Employment	Feb. 2025 Employment	Mar. 2025 Employment	Apr. 2025 Employment	Change, Apr. 2024 to Apr. 2025 (%)	Change, Mar. 2025 to Apr. 2025 (%)
Mining, quarrying, and oil and gas extraction	107,600	109,000	109,900	110,800	3.0%	0.8%
Construction	144,200	144,400	146,600	149,000	3.3%	1.6%
Manufacturing	310,300	309,900	308,500	307,600	-0.9%	-0.3%
Wholesale and retail trade	620,000	629,800	630,500	631,100	1.8%	0.1%
Transportation and utilities	259,800	262,100	260,800	258,600	-0.5%	-0.8%
Information	88,700	88,600	89,400	88,800	0.1%	-0.7%
Financial activities	377,400	383,500	382,600	383,200	1.5%	0.2%
Professional and business services	773,700	769,700	764,700	772,300	-0.2%	1.0%
Education and health services	510,700	517,900	518,200	520,900	2.0%	0.5%
Leisure and hospitality	427,100	425,800	429,500	437,200	2.4%	1.8%
Other services	139,100	138,300	140,200	140,000	0.6%	-0.1%
Government	485,800	493,400	494,900	497,000	2.3%	0.4%
Total nonfarm	4,244,400	4,272,400	4,275,800	4,296,500	1.2%	0.5%

Numbers may not sum due to rounding. Employment is not seasonally adjusted.

Source: Bureau of Labor Statistics State and Area Employment, Hours, and Earnings, and Current Employment Statistics, June 2025.



DFW vs. U.S. Employment by Industry

Industry	DFW Apr. 2025 Employment	DFW Apr. 2025 Employment Share (%)	DFW Employment Change, Apr. 2024 to Apr. 2025 (%)	U.S. Apr. 2025 Employment	U.S. Apr. 2025 Employment Share (%)	U.S. Employment Change, Apr. 2024 to Apr. 2025 (%)
Mining, quarrying, and oil and gas extraction	110,800	2.6%	3.0%	620,000	0.4%	-0.6%
Construction	149,000	3.5%	3.3%	8,226,000	5.2%	1.7%
Manufacturing	307,600	7.2%	-0.9%	12,716,000	8.0%	-0.7%
Wholesale and retail trade	631,100	14.7%	1.8%	21,636,500	13.6%	0.5%
Transportation and utilities	258,600	6.0%	-0.5%	7,278,400	4.6%	2.1%
Information	88,800	2.1%	0.1%	2,922,000	1.8%	-0.4%
Financial activities	383,200	8.9%	1.5%	9,202,000	5.8%	1.2%
Professional and business services	772,300	18.0%	-0.2%	22,577,000	14.2%	-0.1%
Education and health services	520,900	12.1%	2.0%	27,321,000	17.1%	3.4%
Leisure and hospitality	437,200	10.2%	2.4%	16,857,000	10.6%	1.3%
Other services	140,000	3.3%	0.6%	6,021,000	3.8%	1.3%
Government	497,000	11.6%	2.3%	23,939,000	15.0%	1.3%
Total nonfarm	4,296,500	100.0%	1.2%	159,316,000	100.0%	1.2%

Numbers may not sum due to rounding. Employment is not seasonally adjusted.

Source: Bureau of Labor Statistics State and Area Employment, Hours, and Earnings, and Current Employment Statistics, June 2025.

SUBSCRIBE

to the
Economic Development Update
newsletter

QUESTIONS?

economicengine@utdallas.edu
economicengine.utdallas.edu