



DFW
LABOR MARKET
UPDATE
March 2025

Published May 14, 2025

SUMMARY

From February to March, the DFW labor market gained **7,300** jobs (net). This represents about **0.17%** of its labor force as it stood as of March, which totaled **4,279,700**. Primary gains in employment were felt most in the **leisure and hospitality** sector which grew by **1%**, adding **4,100** jobs. This was followed by **construction** sector, which grew by **1.8%** and added **2,600** jobs to the local economy. In contrast, the **professional and business services** experienced a decline, losing **4,100** jobs – a loss of **0.5%**.

The local unemployment rate decreased in March, with DFW's rate going down from **4.1%** to **3.8%**. The state and national labor markets followed suit, with the Texas rate falling from **4.3%** to **4%** and the US rate from **4.5%** to **4.2%**.

Total job postings saw a month-over-month increase of **1.4%** in March. The top posted job in the region was **registered nurses**, with a month-over-month loss of over **13.6%**, from **3,982** to **3,440** postings. This was followed by **software developers** with **3,045** postings - representing a month-over-month gain of **1.7%**. In terms of fastest growing occupations, **food preparation workers** took first rank with **516** new jobs, representing a month-over-month growth rate of over **87%**. In contrast, the fastest shrinking occupation was **health care support workers**, which saw a month-over-month decrease of **52.3%**.

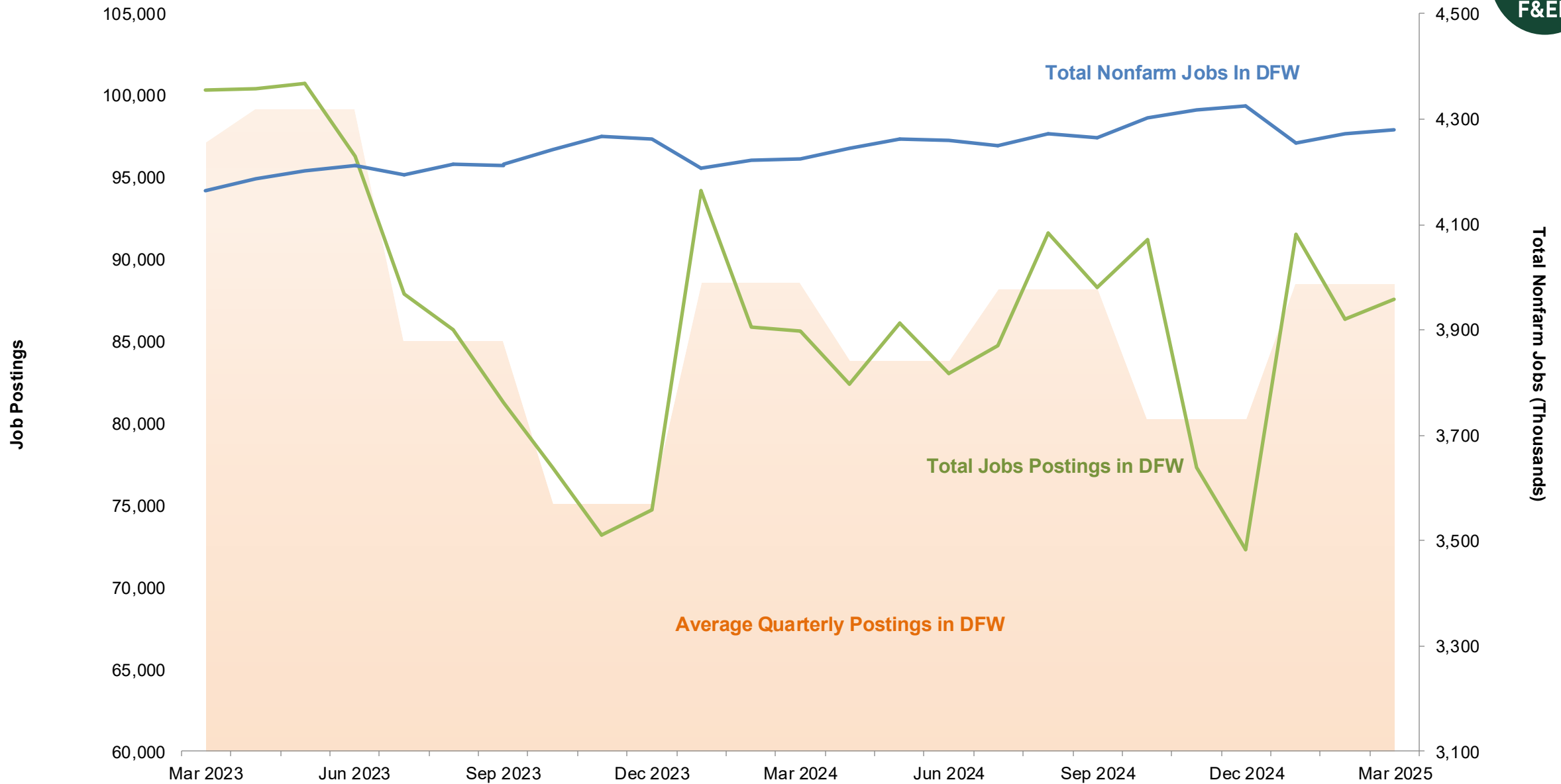
The **Consumer Price Index** for DFW dropped slightly by **0.43%**. The CPI for the state of Texas fell by **0.35%**. Southern Region and U.S experienced an increase of **0.06%** and **0.22%**, **respectively**.

For deeper analysis of these dynamics, see the Federal Reserve Bank of Dallas' [Texas Employment Forecast](#), [DFW Economic Indicators](#), and the Bureau of Labor Statistics' [DFW](#) and [Southwest](#) CPI releases.



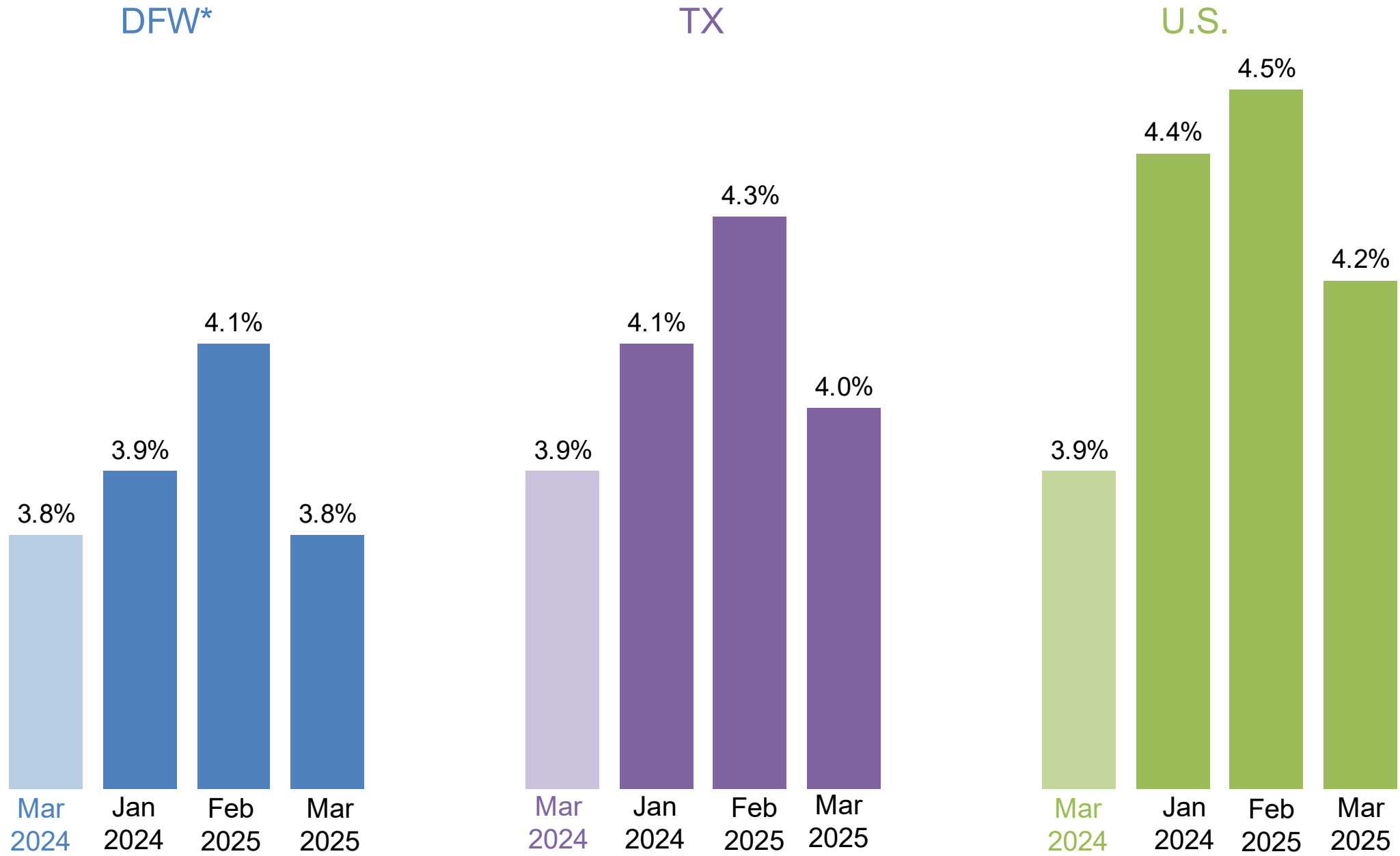


DFW – Job Postings vs. Nonfarm Jobs



* DFW includes Collin, Dallas, Denton, Ellis, Hunt, Johnson, Kaufman, Parker, Rockwall, Tarrant, and Wise counties.
 Source: Bureau of Labor Statistics State and Area Employment, Hours, and Earnings, May 2025. Lightcast, 2025.

Unemployment Rates* in DFW, Texas, and U.S.



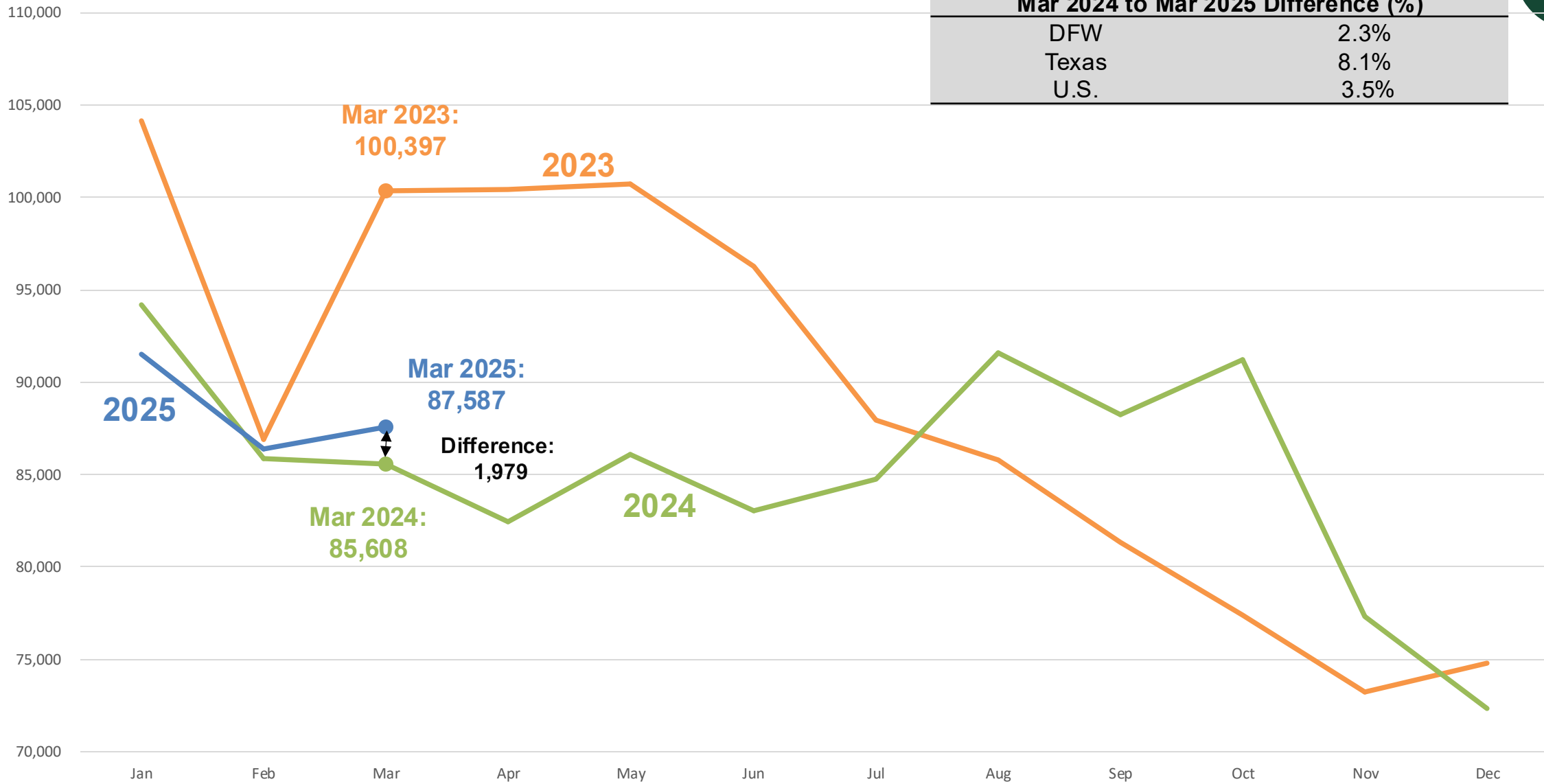
*Not seasonally adjusted.

DFW Total Job Postings Over the Years



Job Postings

Mar 2024 to Mar 2025 Difference (%)	
DFW	2.3%
Texas	8.1%
U.S.	3.5%

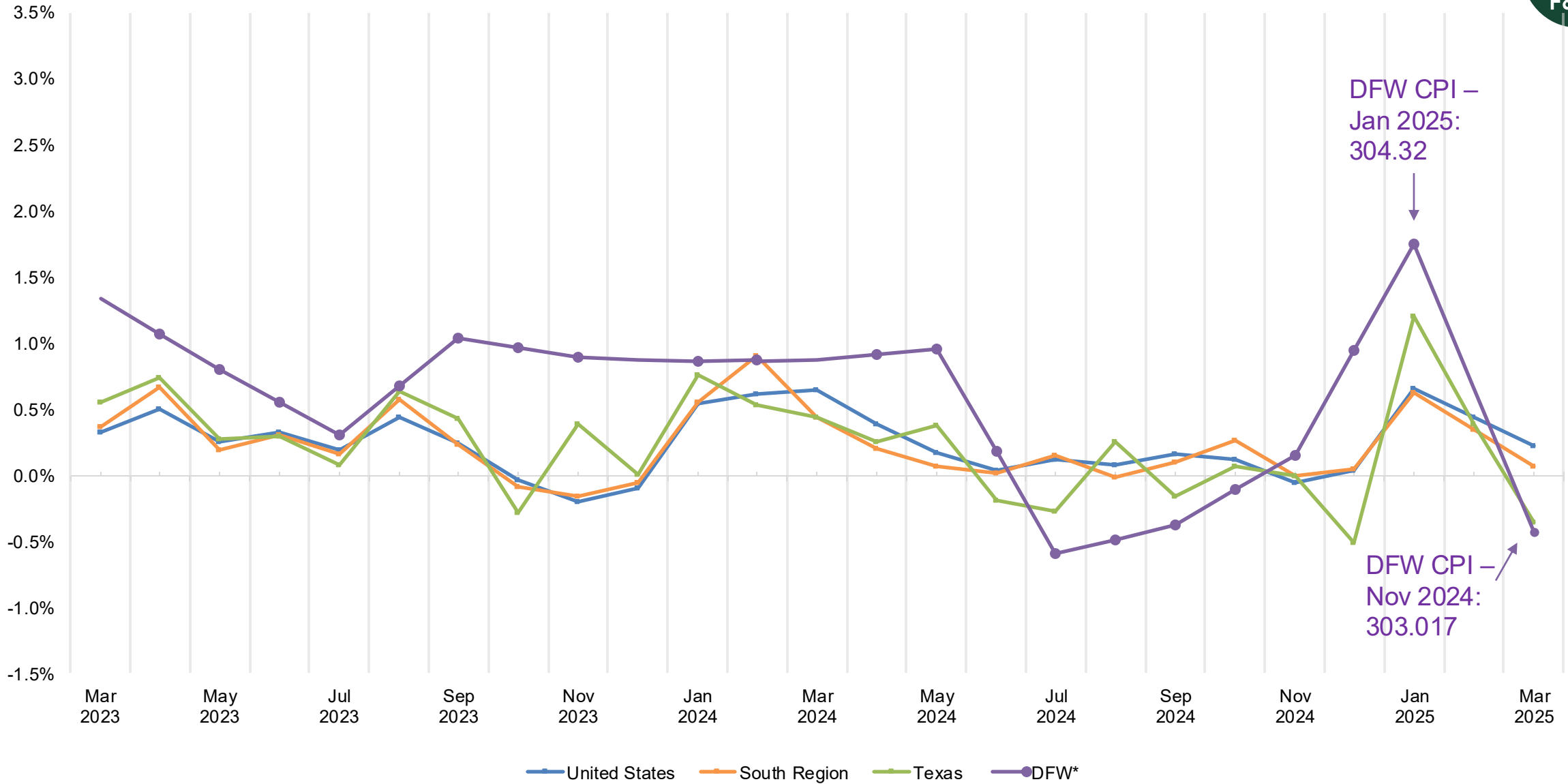


Source: Lightcast, 2025.



Change in Consumer Price Index

Monthly Change in Consumer Price Index



Note: Data for DFW is reported every other month. All other figures are reported monthly.

Sources: Texas data sourced from the Texas Comptroller of Public Accounts, *Key Economic Indicators*, May 2025.

All data for the U.S., South and DFW sourced from the Bureau of Labor Statistics, *CPI for All Urban Consumers (CPI-U)*, May 2025, and is not seasonally adjusted.

Top Occupations by Job Postings in DFW

Occupation	Median Annual Earnings	Median Advertised Salary	Average Monthly Hires	Mar. 2024 Unique Job Postings	Mar. 2025 Unique Job Postings	Change, Mar. 2024 to Mar. 2025 (%)
1 Registered nurses	\$93,338	\$87,296	3,192	3,461	3,440	-0.6%
2 Software developers	\$129,603	\$133,888	3,066	2,224	3,045	36.9%
3 Retail salespersons	\$31,379	\$34,432	6,830	2,426	2,161	-10.9%
4 Computer occupations, all other	\$102,793	\$141,184	875	1,287	1,675	30.1%
5 Heavy and tractor-trailer truck drivers	\$56,418	\$73,088	3,870	1,524	1,619	6.2%
6 Customer service representatives	\$40,241	\$40,064	7,427	1,605	1,551	-3.4%
7 Sales representatives, wholesale and manufacturing, except technical and scientific products	\$63,505	\$76,672	932	1,403	1,532	9.2%
8 First-line supervisors of retail sales workers	\$44,520	\$43,392	1,183	1,650	1,453	-11.9%
9 Laborers and freight, stock, and material movers, hand	\$37,666	\$37,504	8,493	1,031	1,069	3.7%
10 Sales representatives of services, except advertising, insurance, financial services, and travel	\$63,450	\$62,336	2,108	1,002	1,015	1.3%
All occupations	-	-	-	85,591	87,587	2.3%

Source: Lightcast, 2025.



Top Occupations by Job Postings in DFW

	Occupation	Jan. 2025 Unique Job Postings	Feb. 2025 Unique Job Postings	Mar. 2025 Unique Job Postings	Change, Feb. 2025 to Mar. 2025 (%)
1	Registered nurses	3,916	3,982	3,440	-13.6%
2	Software developers	2,837	2,995	3,045	1.7%
3	Retail salespersons	2,235	2,024	2,161	6.8%
4	Computer occupations, all other	1,666	1,563	1,675	7.2%
5	Heavy and tractor-trailer truck drivers	1,729	1,704	1,619	-5.0%
6	Customer service representatives	1,749	1,483	1,551	4.6%
7	Sales representatives, wholesale and manufacturing, except technical and scientific products	1,660	1,548	1,532	-1.0%
8	First-line supervisors of retail sales workers	1,458	1,403	1,453	3.6%
9	Laborers and freight, stock, and material movers, hand	1,039	982	1,069	8.9%
10	Sales representatives of services, except advertising, insurance, financial services, and travel	1,127	1,041	1,015	-2.5%
	All occupations	91,497	86,391	87,587	1.4%

Source: Lightcast, 2025.



Positive Change in Demand by Jobs Postings in DFW

	Occupation	Median Annual Earnings	Median Advertised Salary	Average Monthly Hires	Feb. 2025 Unique Job Postings	Mar. 2025 Unique Job Postings	Month-over-month Change
1	Food Preparation Workers	\$30,686	\$28,032	2,737	276	516	87.0%
2	Secondary School Teachers, Except Special and Career/Technical Education	\$66,281	\$60,288	586	536	707	31.9%
3	Personal Financial Advisors	\$83,396	\$89,856	211	258	392	51.9%
4	Teaching Assistants, Except Postsecondary	\$29,986	\$32,640	1,190	267	395	47.9%
5	Accountants and Auditors	\$80,489	\$83,328	1,969	660	805	22.0%
6	Sales Representatives, Wholesale and Manufacturing, Technical and Scientific Products	\$80,415	\$77,696	483	818	948	15.9%
7	Waiters and Waitresses	\$27,912	\$36,480	7,798	625	789	26.2%
8	Janitors and Cleaners, Except Maids and Housekeeping Cleaners	\$31,925	\$34,944	3,261	586	734	25.3%
9	General and Operations Managers	\$102,071	\$80,256	5,435	868	1008	16.1%
10	Home Health and Personal Care Aides	\$23,157	\$31,104	5,106	701	821	17.1%
	All occupations	-	-	-	86,391	87,587	1.4%

Source: Lightcast, 2025.



Negative Change in Demand by Jobs Postings in DFW

	Occupation	Median Annual Earnings	Median Advertised Salary	Average Monthly Hires	Feb. 2025 Unique Job Postings	Mar. 2025 Unique Job Postings	Month-over-month Change
1	Healthcare Support Workers, All Other	\$46,166	\$83,200	161	195	93	-52.3%
2	Light Truck Drivers	\$44,280	\$41,600	1,683	196	105	-46.4%
3	Physician Assistants	\$137,049	\$102,656	149	194	105	-45.9%
4	Magnetic Resonance Imaging Technologists	\$93,649	\$113,152	22	205	124	-39.5%
5	Cardiovascular Technologists and Technicians	\$47,076	\$99,584	39	310	196	-36.8%
6	Speech-Language Pathologists	\$84,957	\$99,840	224	576	390	-32.3%
7	Radiologic Technologists and Technicians	\$78,706	\$100,608	163	470	381	-18.9%
8	Physical Therapists	\$106,635	\$98,688	212	425	355	-16.5%
9	Security Guards	\$35,116	\$37,504	2,610	512	445	-13.1%
10	Secretaries and Administrative Assistants, Except Legal, Medical, and Executive	\$44,302	\$41,600	1,770	802	729	-9.1%
	All occupations	-	-	-	86,391	87,587	1.4%

Source: Lightcast, 2025.





DFW Employment by Industry

Industry	Mar. 2024 Employment	Jan. 2025 Employment	Feb. 2025 Employment	Mar. 2025 Employment	Change, Mar. 2024 to Mar. 2025 (%)	Change, Mar. Feb. 2025 to Mar. 2025 (%)
Mining, quarrying, and oil and gas extraction	107,400	108,000	109,000	109,800	2.2%	0.7%
Construction	143,700	144,200	144,400	147,000	2.3%	1.8%
Manufacturing	310,700	310,600	309,900	309,400	-0.4%	-0.2%
Wholesale and retail trade	620,900	631,800	629,800	630,700	1.6%	0.1%
Transportation and utilities	259,700	262,300	262,100	260,800	0.4%	-0.5%
Information	88,200	88,500	88,600	89,400	1.4%	0.9%
Financial activities	376,000	384,500	383,500	382,200	1.6%	-0.3%
Professional and business services	766,500	769,700	769,700	765,600	-0.1%	-0.5%
Education and health services	506,500	513,000	517,900	519,100	2.5%	0.2%
Leisure and hospitality	421,100	418,100	425,800	429,900	2.1%	1.0%
Other services	138,400	137,900	138,300	140,600	1.6%	1.7%
Government	484,500	487,000	493,400	495,200	2.2%	0.4%
Total nonfarm	4,223,600	4,255,600	4,272,400	4,279,700	1.3%	0.2%

Numbers may not sum due to rounding. Employment is not seasonally adjusted.

Source: Bureau of Labor Statistics State and Area Employment, Hours, and Earnings, and Current Employment Statistics, May 2025.



DFW vs. U.S. Employment by Industry

Industry	DFW Mar. 2025 Employment	DFW Mar. 2025 Employment Share (%)	DFW Employment Change, Mar. 2024 to Mar. 2025 (%)	U.S. Mar. 2025 Employment	U.S. Mar. 2025 Employment Share (%)	U.S. Employment Change, Mar. 2024 to Mar. 2025 (%)
Mining, quarrying, and oil and gas extraction	109,800	2.6%	2.2%	619,000	0.4%	-1.7%
Construction	147,000	3.4%	2.3%	8,071,000	5.1%	1.7%
Manufacturing	309,400	7.2%	-0.4%	12,714,000	8.0%	-0.6%
Wholesale and retail trade	630,700	14.7%	1.6%	21,583,700	13.6%	0.5%
Transportation and utilities	260,800	6.1%	0.4%	7,277,000	4.6%	1.9%
Information	89,400	2.1%	1.4%	2,920,000	1.8%	-0.7%
Financial activities	382,200	8.9%	1.6%	9,182,000	5.8%	1.0%
Professional and business services	765,600	17.9%	-0.1%	22,355,000	14.1%	-0.2%
Education and health services	519,100	12.1%	2.5%	27,228,000	17.2%	3.4%
Leisure and hospitality	429,900	10.0%	2.1%	16,559,000	10.5%	1.2%
Other services	140,600	3.3%	1.6%	5,993,000	3.8%	1.5%
Government	495,200	11.6%	2.2%	23,909,000	15.1%	1.2%
Total nonfarm	4,279,700	100.0%	1.3%	158,411,000	100.0%	1.1%

Numbers may not sum due to rounding. Employment is not seasonally adjusted.

Source: Bureau of Labor Statistics State and Area Employment, Hours, and Earnings, and Current Employment Statistics, May 2025.

***An Economic Engine
for the Region***

Web

economicengine.utdallas.edu

Email

economicengine@utdallas.edu

Newsletter

economicengine.utdallas.edu/tools/subscribe