



DFW LABOR MARKET UPDATE **February 2025**

Published April 9, 2025

SUMMARY

From January to February, the DFW labor market gained **19,800** jobs (net). This represents about **0.47%** of its labor force as it stood as of February, which totaled **4,275,400**. Primary gains in employment were felt most in the **government** sector which grew by **1.4%**, adding **6,700** jobs. This was followed by **leisure and hospitality** sector, which grew by **1.6%** and added **6,500** jobs to the local economy. In contrast, the **wholesale and retail trade** experienced a decline, losing **1,400** jobs – a loss of **0.2%**.

The local unemployment rate increased in February, with DFW's rate going up from **3.9%** to **4.1%**. The state and national labor markets followed suit, with the Texas rate rising from **4.1%** to **4.3%** and the US rate from **4.4%** to **4.5%**.

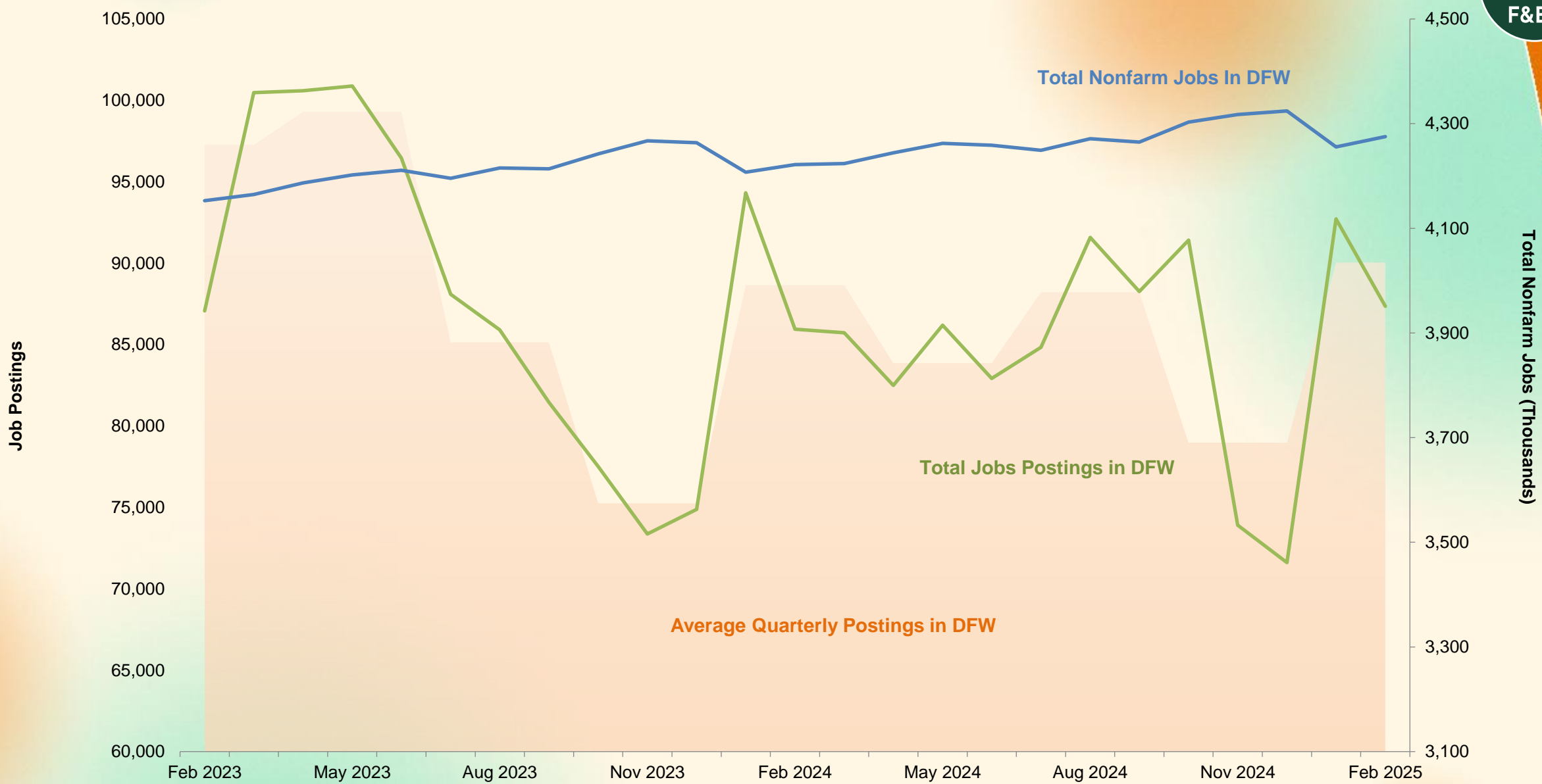
Total job postings saw a month-over-month decrease of **5.8%** in February. The top posted job in the region was **registered nurse**, with a month-over-month gain of over **3.1%**, from **3,816** to **3,936** postings. This was followed by **software developers** with **3,021** postings - representing a month-over-month gain of **3.4%**. In terms of fastest growing occupations, **anesthesiologists** took first rank with **83** new jobs, representing a month-over-month growth rate of over **388.2%**. In contrast, the fastest shrinking occupation was **claims adjusters, examiners, and investigators**, which saw a month-over-month decrease of **33.5%**.

The **Consumer Price Index** for DFW will not be released for February. The CPI for state of Texas, Southern Region and U.S experienced an increase of 0.39%, 0.35% and 0.44%, **respectively**.

For deeper analysis of these dynamics, see the Federal Reserve Bank of Dallas' [Texas Employment Forecast](#), [DFW Economic Indicators](#), and the Bureau of Labor Statistics' [DFW](#) and [Southwest](#) CPI releases.



DFW – Job Postings vs. Nonfarm Jobs



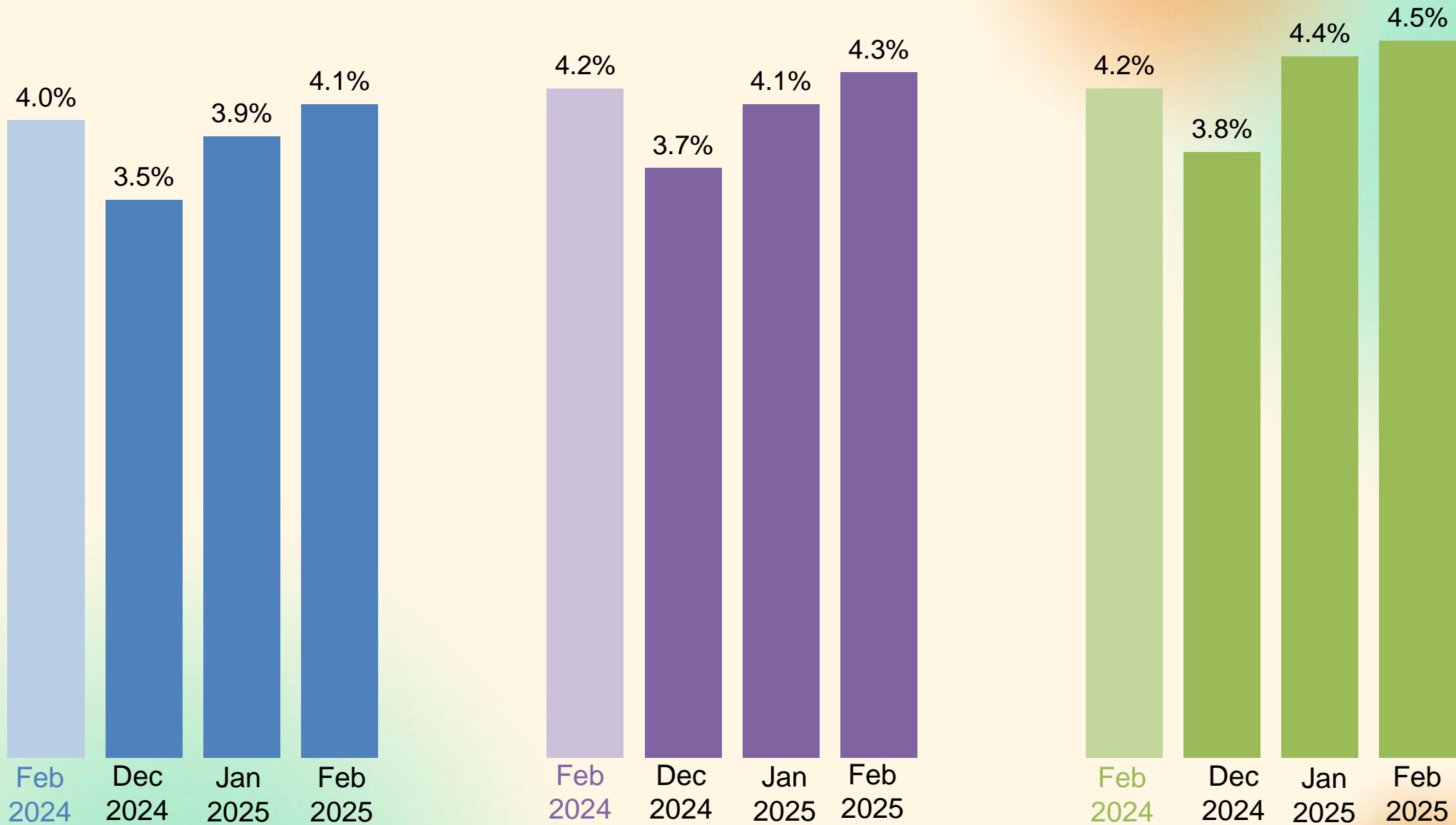
* DFW includes Collin, Dallas, Denton, Ellis, Hunt, Johnson, Kaufman, Parker, Rockwall, Tarrant, and Wise counties.
Source: Bureau of Labor Statistics State and Area Employment, Hours, and Earnings, April 2025. Lightcast, 2025.

Unemployment Rates* in DFW, Texas, and U.S.

DFW*

TX

U.S.



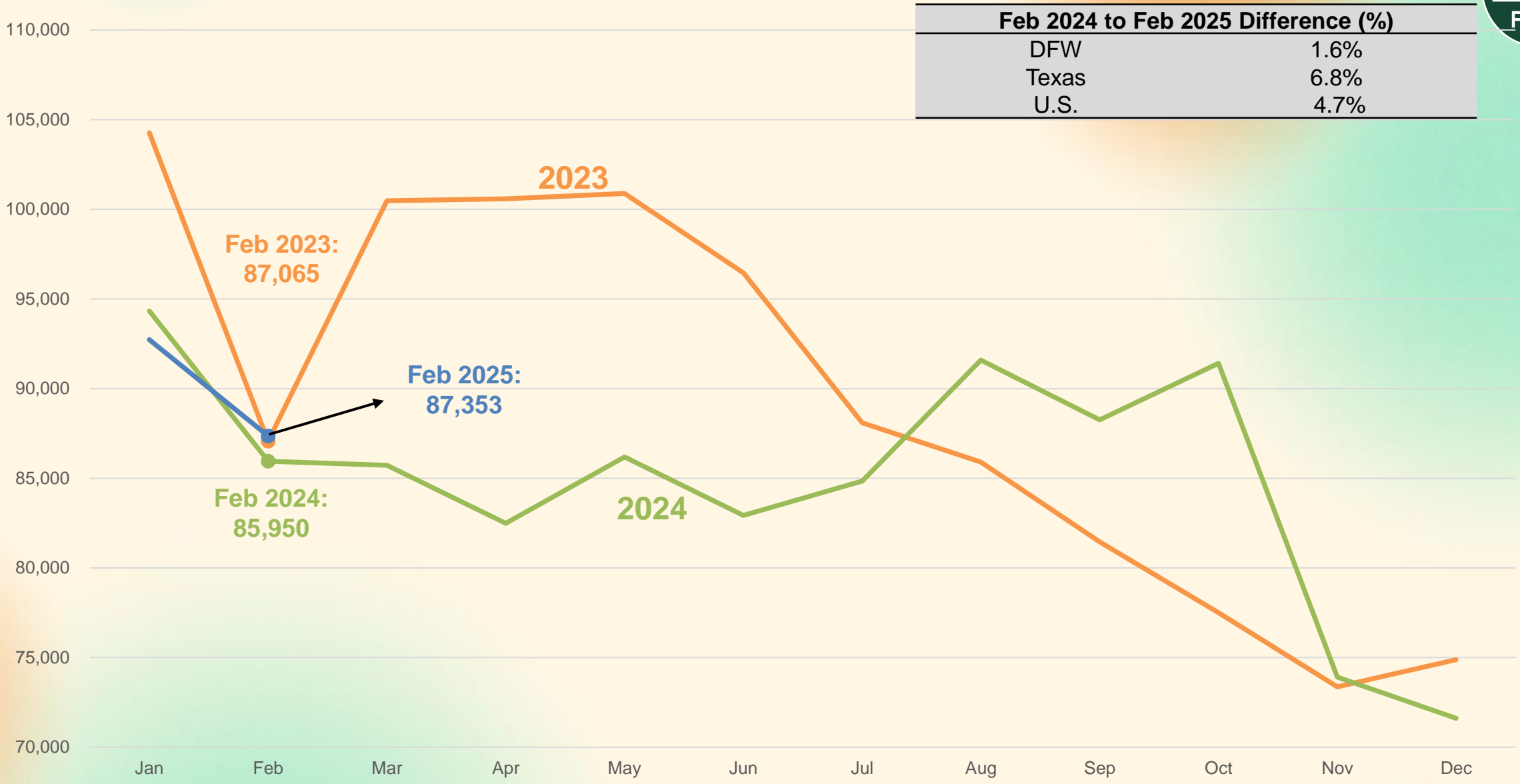
*Not seasonally adjusted.

Source: Bureau of Labor Statistics, Labor Force Statistics, April 2025.

DFW Total Job Postings Over the Years



Job Postings



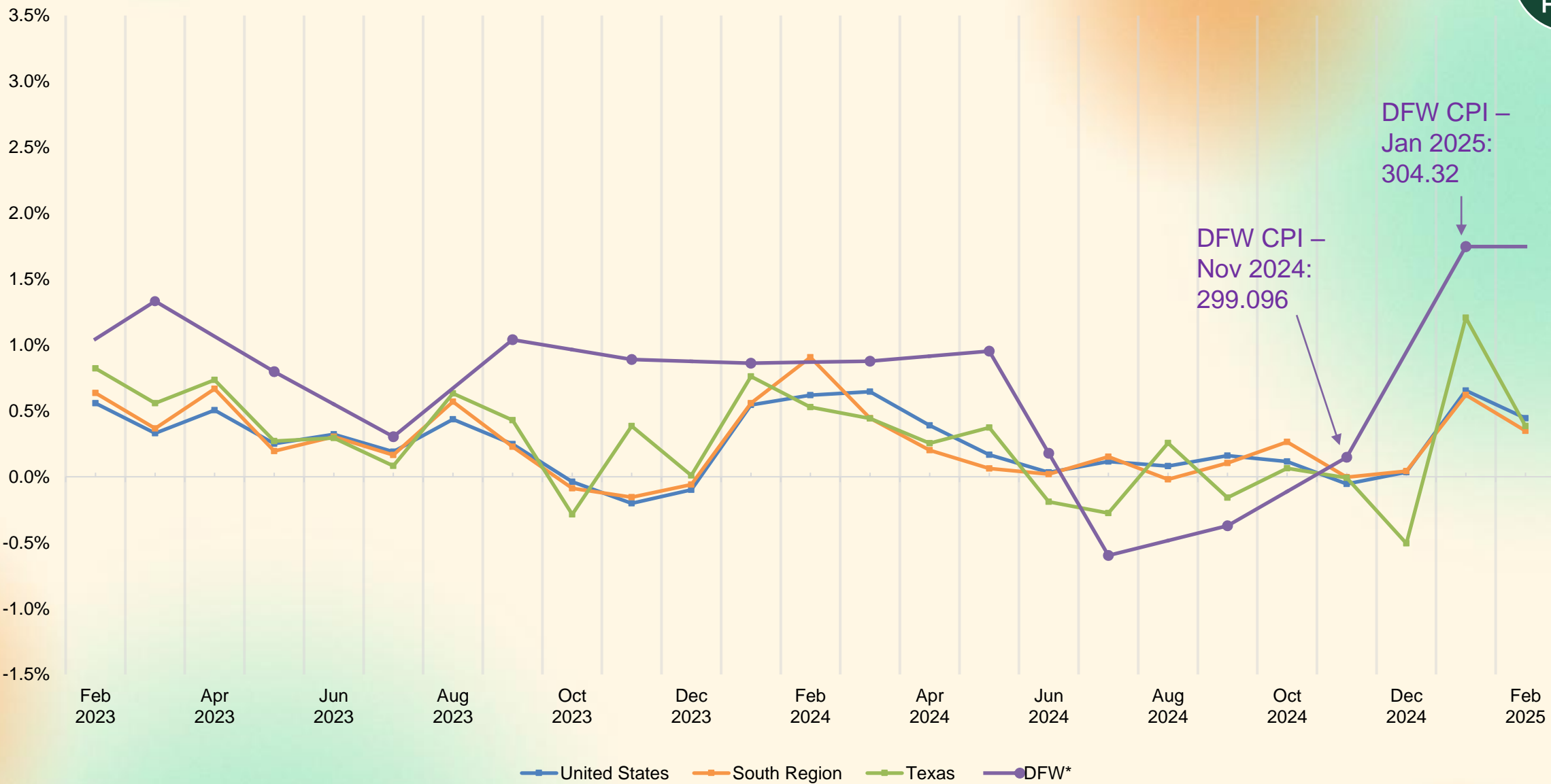
Feb 2024 to Feb 2025 Difference (%)	
DFW	1.6%
Texas	6.8%
U.S.	4.7%

Source: Lightcast, 2025.



Change in Consumer Price Index

Monthly Change in Consumer Price Index



Note: Data for DFW is reported every other month. All other figures are reported monthly.
 Sources: Texas data sourced from the Texas Comptroller of Public Accounts, *Key Economic Indicators*, April 2025.
 All data for the U.S., South and DFW sourced from the Bureau of Labor Statistics, *CPI for All Urban Consumers (CPI-U)*, April 2025, and is not seasonally adjusted.

Top Occupations by Job Postings in DFW

	Occupation	Median Annual Earnings	Median Advertised Salary	Average Monthly Hires	Feb. 2024 Unique Job Postings	Feb. 2025 Unique Job Postings	Change, Feb. 2024 to Feb. 2025 (%)
1	Registered nurses	\$93,338	\$88,448	3,192	3,504	3,936	12.3%
2	Software developers	\$129,603	\$135,040	3,066	2,305	3,021	31.1%
3	Computer occupations, all other	\$102,793	\$137,088	875	1,693	1,926	13.8%
4	Retail salespersons	\$31,379	\$33,920	6,830	2,353	1,881	-20.1%
5	Sales representatives, wholesale and manufacturing, except technical and scientific products	\$63,505	\$74,112	932	1,507	1,599	6.1%
6	Heavy and tractor-trailer truck drivers	\$56,418	\$75,136	3,870	1,285	1,552	20.8%
7	Customer service representatives	\$40,241	\$40,576	7,427	1,751	1,467	-16.2%
8	First-line supervisors of retail sales workers	\$44,520	\$44,928	1,183	1,278	1,345	5.2%
9	Laborers and freight, stock, and material movers, hand	\$37,666	\$38,528	8,493	1,107	1,214	9.7%
10	Maintenance and repair workers, general	\$44,270	\$52,096	1,982	1,265	1,061	-16.1%
	All occupations	-	-	-	85,929	87,377	1.7%

Source: Lightcast, 2025.

Top Occupations by Job Postings in DFW

Occupation		Dec. 2024 Unique Job Postings	Jan. 2025 Unique Job Postings	Feb. 2025 Unique Job Postings	Change, Jan. 2025 to Feb. 2025 (%)
1	Registered nurses	3,241	3,816	3,936	3.1%
2	Software developers	2,140	2,922	3,021	3.4%
3	Computer occupations, all other	1,488	2,104	1,926	-8.5%
4	Retail salespersons	1,815	2,059	1,881	-8.6%
5	Sales representatives, wholesale and manufacturing, except technical and scientific products	1,291	1,804	1,599	-11.4%
6	Heavy and tractor-trailer truck drivers	1,330	1,555	1,552	-0.2%
7	Customer service representatives	1,334	1,753	1,467	-16.3%
8	First-line supervisors of retail sales workers	1,218	1,404	1,345	-4.2%
9	Laborers and freight, stock, and material movers, hand	883	1,155	1,214	5.1%
10	Maintenance and repair workers, general	935	1,170	1,061	-9.3%
All occupations		71,602	92,724	87,377	-5.8%

Source: Lightcast, 2025.



Positive Change in Demand by Jobs Postings in DFW

	Occupation	Median Annual Earnings	Median Advertised Salary	Average Monthly Hires	Jan. 2025 Unique Job Postings	Feb. 2025 Unique Job Postings	Month-over-month Change
1	Anesthesiologists	\$185,017	\$80,896	14	17	83	388.2%
2	Healthcare Support Workers, All Other	\$46,166	\$83,200	161	61	196	221.3%
3	Healthcare Social Workers	\$67,541	\$105,216	157	31	93	200.0%
4	Speech-Language Pathologists	\$84,957	\$103,168	224	236	581	146.2%
5	Family Medicine Physicians	\$236,762	\$200,448	28	69	144	108.7%
6	Elementary School Teachers, Except Special Education	\$65,345	\$54,912	845	101	201	99.0%
7	Physicians, All Other	\$130,629	\$210,688	285	145	214	47.6%
8	Secondary School Teachers, Except Special and Career/Technical Education	\$66,281	\$60,032	586	304	385	26.6%
9	Production, Planning, and Expediting Clerks	\$49,431	\$51,072	410	373	446	19.6%
10	Counselors, All Other	\$50,001	\$82,816	76	201	269	33.8%
	All occupations	-	-	-	92,724	87,377	-5.8%

Source: Lightcast, 2025.

Negative Change in Demand by Jobs Postings in DFW

	Occupation	Median Annual Earnings	Median Advertised Salary	Average Monthly Hires	Jan. 2025 Unique Job Postings	Feb. 2025 Unique Job Postings	Month-over-month Change
1	Claims Adjusters, Examiners, and Investigators	\$75,233	\$55,808	255	394	262	-33.5%
2	Fast Food and Counter Workers	\$26,308	\$29,056	19,168	1131	810	-28.4%
3	Automotive Service Technicians and Mechanics	\$48,863	\$51,072	1,057	736	531	-27.9%
4	First-Line Supervisors of Food Preparation and Serving Workers	\$37,035	\$40,064	1,643	697	504	-27.7%
5	Project Management Specialists	\$95,787	\$104,320	1,788	1204	936	-22.3%
6	Construction Managers	\$101,140	\$105,344	554	684	552	-19.3%
7	Food Service Managers	\$64,178	\$56,448	208	963	797	-17.2%
8	Sales Managers	\$127,530	\$107,392	1,103	1065	890	-16.4%
9	Sales Representatives, Wholesale and Manufacturing, Technical and Scientific Products	\$80,415	\$80,256	483	870	743	-14.6%
10	General and Operations Managers	\$102,071	\$70,016	5,435	1192	1051	-11.8%
	All occupations	-	-	-	92,724	87,377	-5.8%

Source: Lightcast, 2025.





DFW Employment by Industry

Industry	Feb. 2024 Employment	Dec. 2024 Employment	Jan. 2025 Employment	Feb. 2025 Employment	Change, Feb. 2024 to Feb. 2025 (%)	Change, Jan. 2025 to Feb. 2025 (%)
Mining, quarrying, and oil and gas extraction	106,100	108,600	108,000	109,400	3.1%	1.3%
Construction	142,400	146,400	144,200	145,600	2.2%	1.0%
Manufacturing	310,600	311,900	310,600	310,100	-0.2%	-0.2%
Wholesale and retail trade	620,600	648,000	631,800	630,400	1.6%	-0.2%
Transportation and utilities	263,200	274,200	262,300	261,700	-0.6%	-0.2%
Information	88,400	89,800	88,500	88,700	0.3%	0.2%
Financial activities	374,800	387,600	384,500	383,600	2.3%	-0.2%
Professional and business services	774,100	783,800	769,700	772,100	-0.3%	0.3%
Education and health services	507,900	514,400	513,000	517,300	1.9%	0.8%
Leisure and hospitality	414,300	428,200	418,100	424,600	2.5%	1.6%
Other services	137,300	139,200	137,900	138,200	0.7%	0.2%
Government	482,100	492,200	487,000	493,700	2.4%	1.4%
Total nonfarm	4,221,800	4,324,300	4,255,600	4,275,400	1.3%	0.5%



DFW vs. U.S. Employment by Industry

Industry	DFW Feb. 2025 Employment	DFW Feb. 2025 Employment Share (%)	DFW Employment Change, Feb. 2024 to Feb. 2025 (%)	U.S. Feb. 2025 Employment	U.S. Feb. 2025 Employment Share (%)	U.S. Employment Change, Feb. 2024 to Feb. 2025 (%)
Mining, quarrying, and oil and gas extraction	109,400	2.6%	3.1%	619,000	0.4%	-0.6%
Construction	145,600	3.4%	2.2%	7,989,000	5.1%	2.0%
Manufacturing	310,100	7.3%	-0.2%	12,709,000	8.0%	-0.7%
Wholesale and retail trade	630,400	14.7%	1.6%	21,550,900	13.6%	0.5%
Transportation and utilities	261,700	6.1%	-0.6%	7,330,400	4.6%	2.5%
Information	88,700	2.1%	0.3%	2,922,000	1.8%	-0.6%
Financial activities	383,600	9.0%	2.3%	9,185,000	5.8%	1.0%
Professional and business services	772,100	18.1%	-0.3%	22,330,000	14.1%	-0.3%
Education and health services	517,300	12.1%	1.9%	27,160,000	17.2%	3.5%
Leisure and hospitality	424,600	9.9%	2.5%	16,355,000	10.4%	1.5%
Other services	138,200	3.2%	0.7%	5,958,000	3.8%	1.5%
Government	493,700	11.5%	2.4%	23,842,000	15.1%	1.5%
Total nonfarm	4,275,400	100.0%	1.3%	157,950,000	100.0%	1.2%

Numbers may not sum due to rounding. Employment is not seasonally adjusted.

Source: Bureau of Labor Statistics State and Area Employment, Hours, and Earnings, and Current Employment Statistics, April 2025.

SUBSCRIBE

to the
Economic Development Update
newsletter

QUESTIONS?

economicengine@utdallas.edu
economicengine.utdallas.edu