



DFW
LABOR MARKET
UPDATE
January 2025

Published March 12, 2025

SUMMARY

From December to January, the DFW labor market lost **64,000** jobs (net). This represents about **1.5%** of its labor force as it stood as of January, which totaled **4,260,300**. Primary losses in employment were felt most in the **wholesale and retail trade** sector which declined by **2.4%**, losing **15,600** jobs. This was followed by **transportation and utilities**, which experienced a decline of **4.3%** losing **11,900** jobs to the local economy. **Other services** experienced the lowest decline of **100** jobs at **0.1%**.

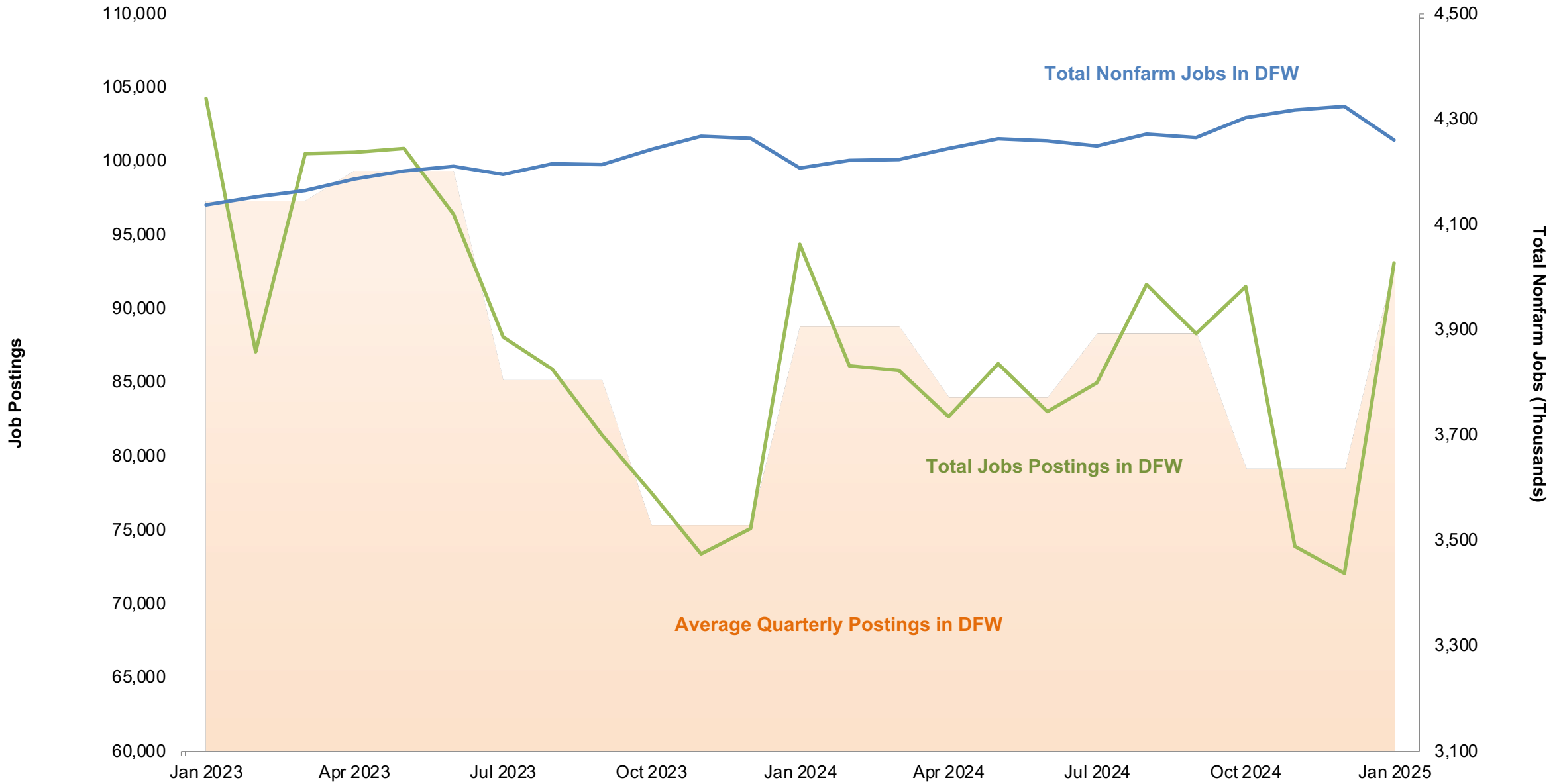
The local unemployment rate increased in January, with DFW's rate going up from **3.5%** to **3.9%**. The state and national labor markets followed suit, with the Texas rate rising from **3.7%** to **4.1%** and the US rate increasing sharply from **3.8%** to **4.4%**.

Total job postings saw a month-over-month increase of **29.2%** in December. The top posted job in the region was **registered nurse**, with a month-over-month gain of over **17.3%**, from **3,257** to **3,820** postings. This was followed by **software developers** with **2,922** postings - representing a month-over-month gain of **36.2%**. In terms of *fastest* growing occupations, **project management specialists** took first rank with **1,200** new jobs, representing a month-over-month growth rate of over **66.4%**. In contrast, the fastest shrinking occupation was **emergency medical technicians**, which saw a month-over-month decrease of **70.1%**.

The **Consumer Price Index** for DFW rose slightly by 1.75% from December to January. The state of Texas, Southern Region and U.S followed this trend, with each experiencing an increase of 1.21%, 0.62% and 0.65% in it's CPI metric.

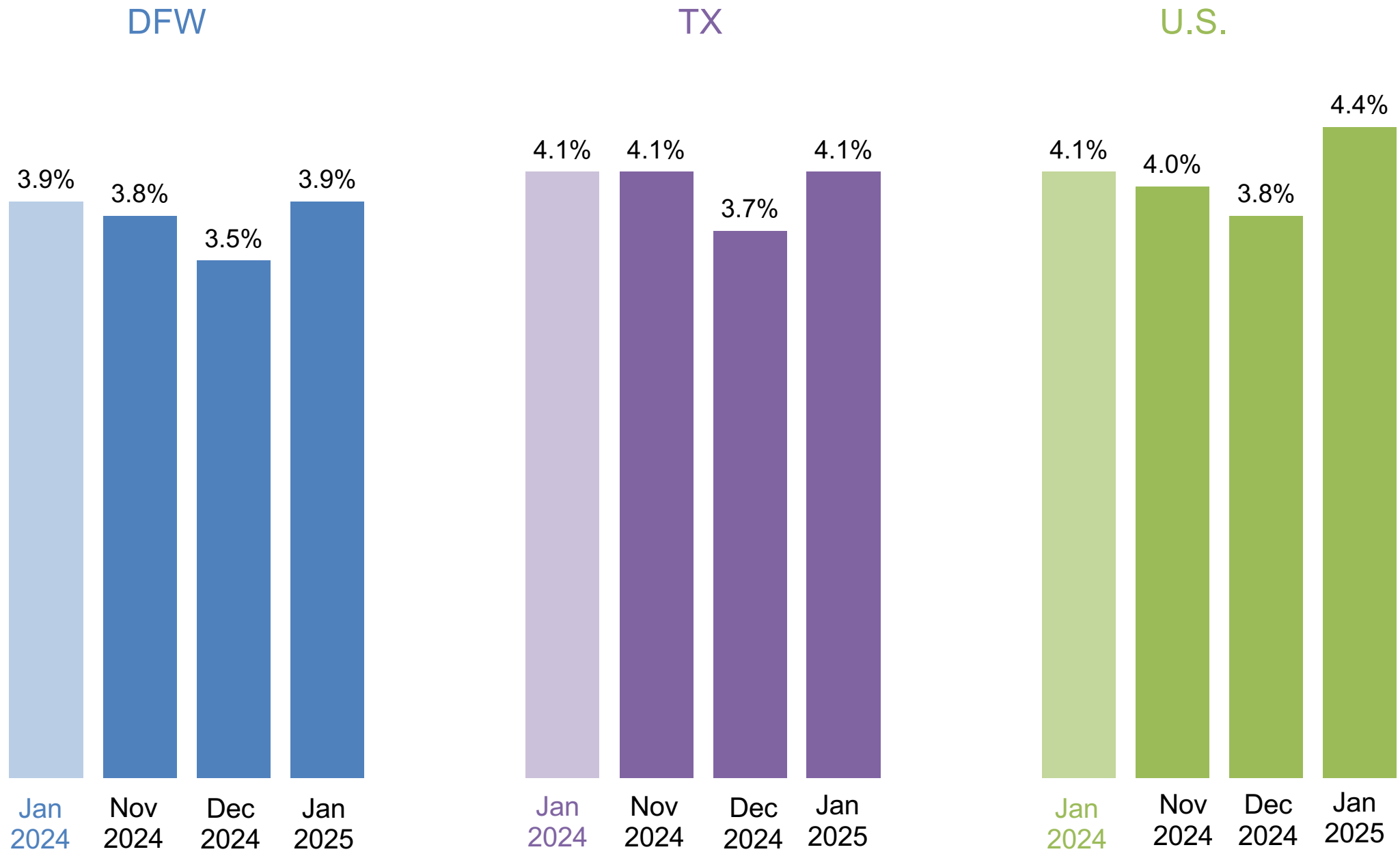
See the Federal Reserve Bank of Dallas' [Texas Employment Forecast](#) and [DFW Economic Indicators](#) and the Bureau of Labor Statistics' [DFW](#) and [Southwest](#) CPI releases for a deeper analysis of these dynamics.

DFW – Job Postings vs. Nonfarm Jobs



* DFW includes Collin, Dallas, Denton, Ellis, Hunt, Johnson, Kaufman, Parker, Rockwall, Tarrant, and Wise counties. Source: Bureau of Labor Statistics State and Area Employment, Hours, and Earnings, March 2025. Lightcast, 2025.

Unemployment Rates* in DFW, Texas, and U.S.

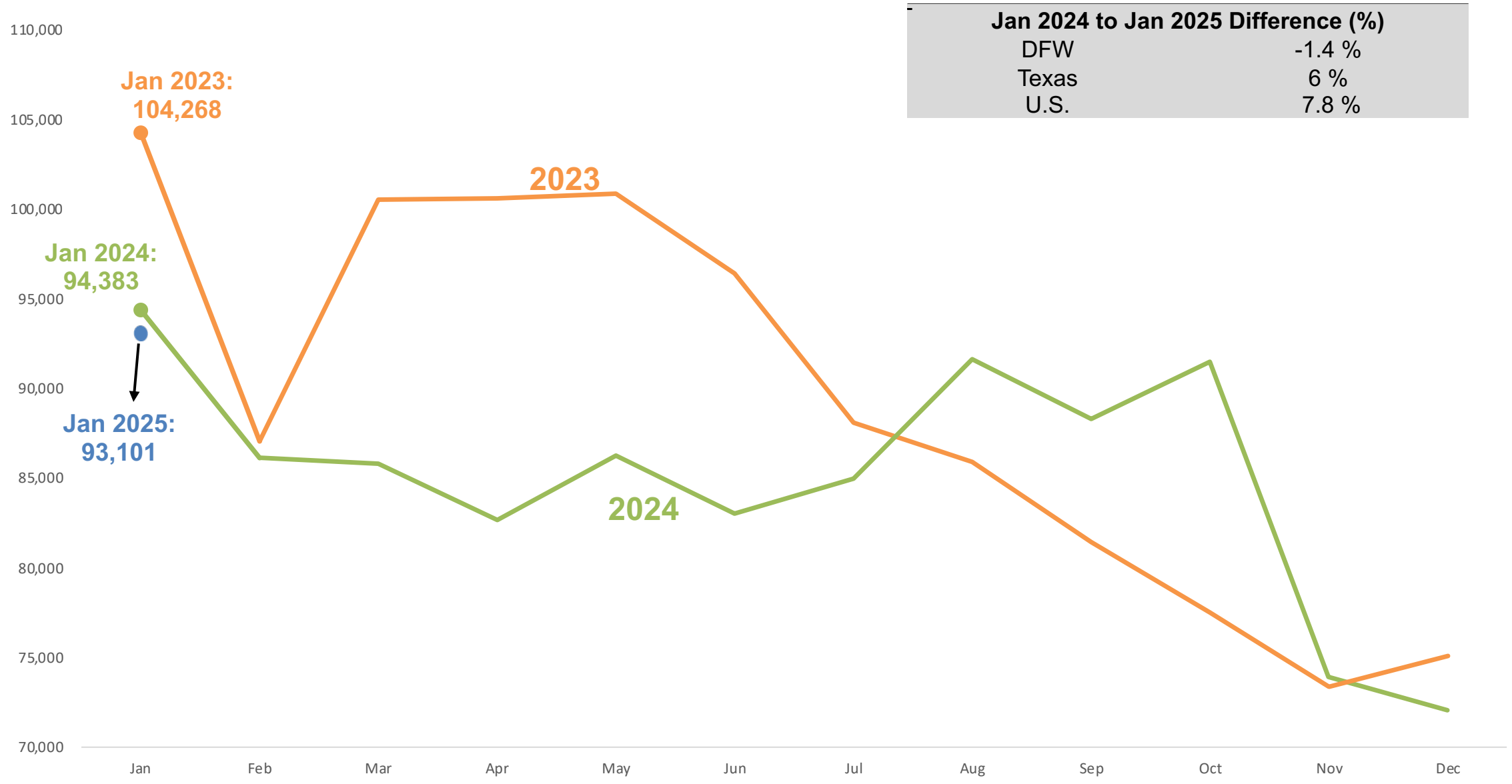


*Not seasonally adjusted.

Source: Bureau of Labor Statistics, Labor Force Statistics, March 2025.

DFW Total Job Postings Over the Years

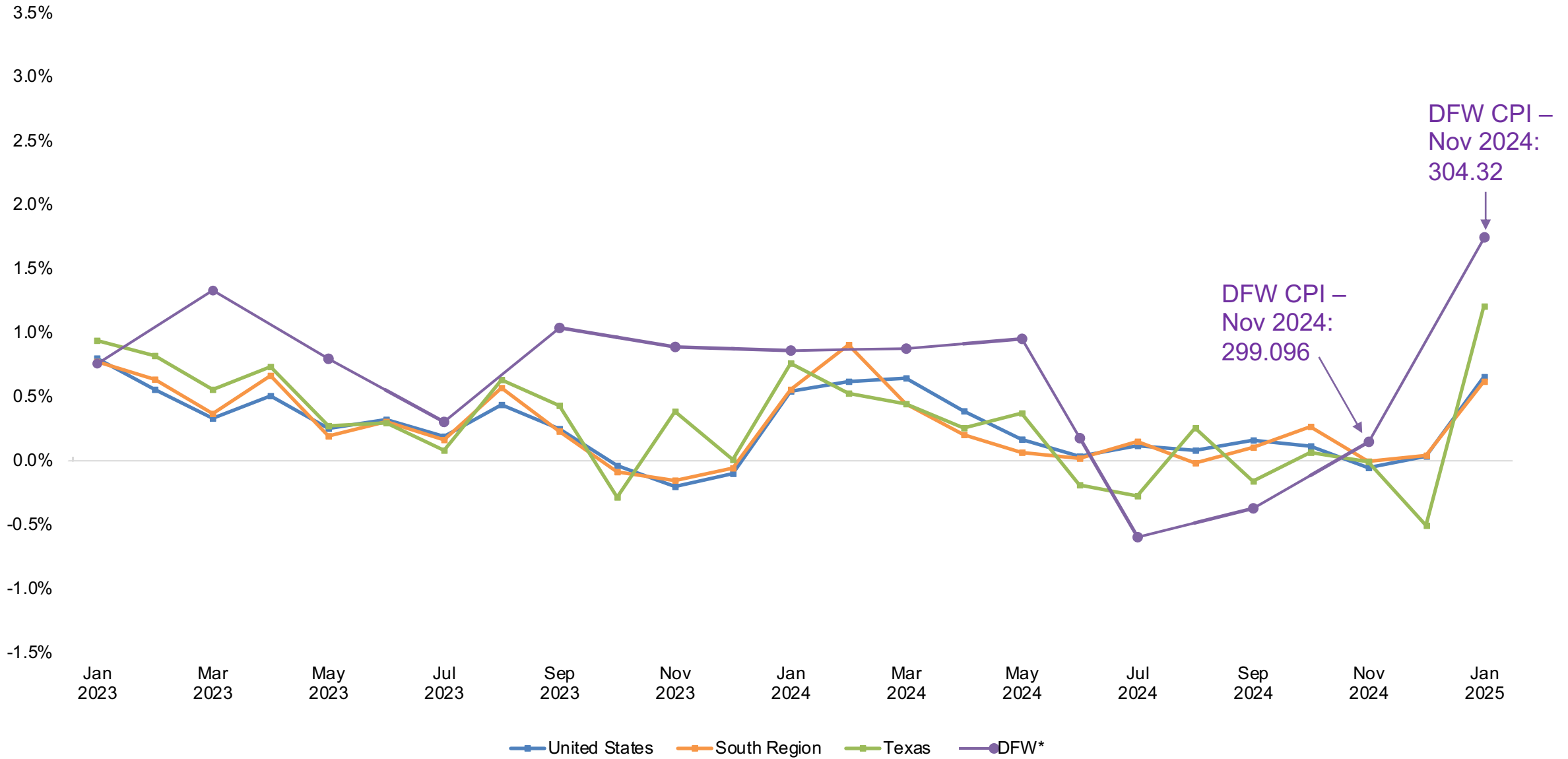
Job Postings



Source: Lightcast, 2025.

Change in Consumer Price Index

Monthly Change in Consumer Price Index



Note: Data for DFW is reported every other month. All other figures are reported monthly.
 Sources: Texas data sourced from the Texas Comptroller of Public Accounts, *Key Economic Indicators*, March 2025.
 All data for the U.S., South and DFW sourced from the Bureau of Labor Statistics, *CPI for All Urban Consumers (CPI-U)*, March 2025, and is not seasonally adjusted.

Top Occupations by Job Postings in DFW

	Occupation	Median Annual Earnings	Median Advertised Salary	Average Monthly Hires	Jan. 2024 Unique Job Postings	Jan. 2025 Unique Job Postings	Change, Jan. 2024 to Jan. 2025 (%)
1	Registered nurses	\$93,338	\$87,424	3,114	3,938	3,820	-3.0%
2	Software developers	\$129,603	\$137,088	2,902	3,387	2,922	-13.7%
3	Computer occupations, all other	\$102,793	\$138,112	848	1,876	2,116	12.8%
4	Retail salespersons	\$31,379	\$33,408	6,738	2,328	2,096	-10.0%
5	Sales representatives, wholesale and manufacturing, except technical and scientific products	\$63,505	\$72,576	909	1,898	1,798	-5.3%
6	Customer service representatives	\$40,241	\$41,600	7,326	1,805	1,761	-2.4%
7	Heavy and tractor-trailer truck drivers	\$56,418	\$73,088	3,779	1,493	1,557	4.3%
8	First-line supervisors of retail sales workers	\$44,520	\$44,160	1,167	1,491	1,390	-6.8%
9	Fast food and counter workers	\$26,308	\$29,056	18,656	1,023	1,257	22.9%
10	General and operations managers	\$102,071	\$70,016	5,297	1,287	1,237	-3.9%
	All occupations	-	-	-	94,364	93,094	-1.3%

Source: Lightcast, 2025.

Top Occupations by Job Postings in DFW

	Occupation	Nov. 2024 Unique Job Postings	Dec. 2024 Unique Job Postings	Jan. 2025 Unique Job Postings	Change, Dec. 2024 to Jan. 2025 (%)
1	Registered nurses	2,968	3,257	3,820	17.3%
2	Software developers	2,531	2,146	2,922	36.2%
3	Computer occupations, all other	1,760	1,500	2,116	41.1%
4	Retail salespersons	2,007	1,831	2,096	14.5%
5	Sales representatives, wholesale and manufacturing, except technical and scientific products	1,294	1,310	1,798	37.3%
6	Customer service representatives	1,285	1,348	1,761	30.6%
7	Heavy and tractor-trailer truck drivers	1,280	1,331	1,557	17.0%
8	First-line supervisors of retail sales workers	1,124	1,219	1,390	14.0%
9	Fast food and counter workers	956	961	1,257	30.8%
10	General and operations managers	1,050	948	1,237	30.5%
	All occupations	73,886	72,050	93,094	29.2%

Source: Lightcast, 2025.

Positive Change in Demand by Jobs Postings in DFW

	Occupation	Median Annual Earnings	Median Advertised Salary	Average Monthly Hires	Dec. 2024 Unique Job Postings	Jan. 2025 Unique Job Postings	Month-over-month Change
1	Project Management Specialists	\$95,787	\$102,784	1,735	721	1200	66.4%
2	First-Line Supervisors of Food Preparation and Serving Workers	\$37,035	\$40,064	1,594	469	697	48.6%
3	Human Resources Specialists	\$63,263	\$58,496	2,312	486	714	46.9%
4	Sales Representatives, Wholesale and Manufacturing, Technical and Scientific Products	\$80,415	\$76,160	471	597	863	44.6%
5	Financial and Investment Analysts	\$90,789	\$94,464	362	383	617	61.1%
6	Sales Managers	\$127,530	\$107,392	1,076	751	1080	43.8%
7	Financial Managers	\$162,189	\$129,920	769	754	1029	36.5%
8	First-Line Supervisors of Office and Administrative Support Workers	\$64,070	\$54,912	1,814	857	1112	29.8%
9	Marketing Managers	\$136,715	\$135,040	703	470	694	47.7%
10	Laborers and Freight, Stock, and Material Movers, Hand	\$37,666	\$38,016	8,239	887	1155	30.2%
	All occupations	-	-	-	72,050	93,094	29.2%

Source: Lightcast, 2025.

Negative Change in Demand by Jobs Postings in DFW

	Occupation	Median Annual Earnings	Median Advertised Salary	Average Monthly Hires	Dec. 2024 Unique Job Postings	Jan. 2025 Unique Job Postings	Month-over-month Change
1	Emergency Medical Technicians	\$38,311	\$41,472	134	107	32	-70.1%
2	Radiation Therapists	\$109,664	\$109,824	16	38	12	-68.4%
3	Paramedics	\$57,940	\$65,000	83	53	22	-58.5%
4	Miscellaneous Construction and Related Workers	\$47,476	\$47,616	20	32	14	-56.3%
5	Nuclear Medicine Technologists	\$86,912	\$103,424	15	56	29	-48.2%
6	Electrical and Electronics Installers and Repairers, Transportation Equipment	\$84,428	\$48,256	28	41	22	-46.3%
7	Health Education Specialists	\$60,671	\$73,088	44	62	43	-30.6%
8	Personal Service Managers, All Other	\$72,240	\$45,696	29	69	51	-26.1%
9	Aircraft Mechanics and Service Technicians	\$83,567	\$75,008	221	127	99	-22.0%
10	Licensed Practical and Licensed Vocational Nurses	\$59,391	\$61,184	1,026	261	231	-11.5%
	All occupations	-	-	-	72,050	93,094	29.2%

Source: Lightcast, 2025.

DFW Employment by Industry

Industry	Jan. 2024 Employment	Nov. 2024 Employment	Dec. 2024 Employment	Jan. 2025 Employment	Change, Jan. 2024 to Jan. 2025 (%)	Change, Dec. 2024 to Jan. 2025 (%)
Mining, quarrying, and oil and gas extraction	104,300	109,000	108,600	107,800	3.4%	-0.7%
Construction	140,600	147,200	146,400	144,300	2.6%	-1.4%
Manufacturing	308,600	311,500	311,900	310,500	0.6%	-0.4%
Wholesale and retail trade	624,400	640,000	648,000	632,400	1.3%	-2.4%
Transportation and utilities	268,500	272,600	274,200	262,300	-2.3%	-4.3%
Information	88,800	89,300	89,800	88,100	-0.8%	-1.9%
Financial activities	373,100	386,800	387,600	384,500	3.1%	-0.8%
Professional and business services	772,500	782,800	783,800	771,900	-0.1%	-1.5%
Education and health services	502,800	517,100	514,400	512,700	2.0%	-0.3%
Leisure and hospitality	411,400	428,400	428,200	418,000	1.6%	-2.4%
Other services	136,200	140,400	139,200	139,100	2.1%	-0.1%
Government	475,900	492,300	492,200	488,700	2.7%	-0.7%
Total nonfarm	4,207,100	4,317,400	4,324,300	4,260,300	1.3%	-1.5%

DFW vs. U.S. Employment by Industry

Industry	DFW Jan. 2025 Employment	DFW Jan. 2025 Employment Share (%)	DFW Employment Change, Jan. 2024 to Jan. 2025 (%)	U.S. Jan. 2025 Employment	U.S. Jan. 2025 Employment Share (%)	U.S. Employment Change, Jan. 2024 to Jan. 2025 (%)
Mining, quarrying, and oil and gas extraction	107,800	2.5%	3.4%	619,000	0.4%	-0.3%
Construction	144,300	3.4%	2.6%	7,955,000	5.1%	2.3%
Manufacturing	310,500	7.3%	0.6%	12,674,000	8.1%	-0.8%
Wholesale and retail trade	632,400	14.8%	1.3%	21,660,200	13.8%	0.5%
Transportation and utilities	262,300	6.2%	-2.3%	7,351,300	4.7%	2.6%
Information	88,100	2.1%	-0.8%	2,912,000	1.9%	-0.4%
Financial activities	384,500	9.0%	3.1%	9,171,000	5.8%	0.6%
Professional and business services	771,900	18.1%	-0.1%	22,195,000	14.1%	-0.4%
Education and health services	512,700	12.0%	2.0%	26,854,000	17.1%	3.8%
Leisure and hospitality	418,000	9.8%	1.6%	16,263,000	10.4%	1.8%
Other services	139,100	3.3%	2.1%	5,940,000	3.8%	1.7%
Government	488,700	11.5%	2.7%	23,497,000	15.0%	2.0%
Total nonfarm	4,260,300	100.0%	1.3%	157,092,000	100.0%	1.4%

Numbers may not sum due to rounding. Employment is not seasonally adjusted.

Source: Bureau of Labor Statistics State and Area Employment, Hours, and Earnings, and Current Employment Statistics, March 2025.

An Economic Engine for the Region

Web

economicengine.utdallas.edu

Email

economicengine@utdallas.edu

Newsletter

economicengine.utdallas.edu/tools/subscribe