



DFW
LABOR MARKET
UPDATE
NOVEMBER 2024

Published January 5, 2025

SUMMARY

From October to November, the DFW labor market gained **14,100** jobs (net). This represents about **0.32%** of its labor force as it stood as of June, which totaled **4,367,900**. Primary gains in employment were felt most in the **wholesale and retail trade** which grew by **1.1%**, adding **7,300** jobs. This was followed by the **transportation and utilities** sector, which grew by **1.8%** and added **4,900** jobs to the local economy. In contrast, the **professional and business services** sector experienced a decline, losing **3,800** jobs - a loss of **0.5%**.

The local unemployment rate increased in November, with DFW's rate going up from **3.9%** to **4%**. The state and national labor markets followed suit, with the Texas rate rising from **4.1%** to **4.2%** and the U.S. rate climbing from **3.9%** to **4%**.

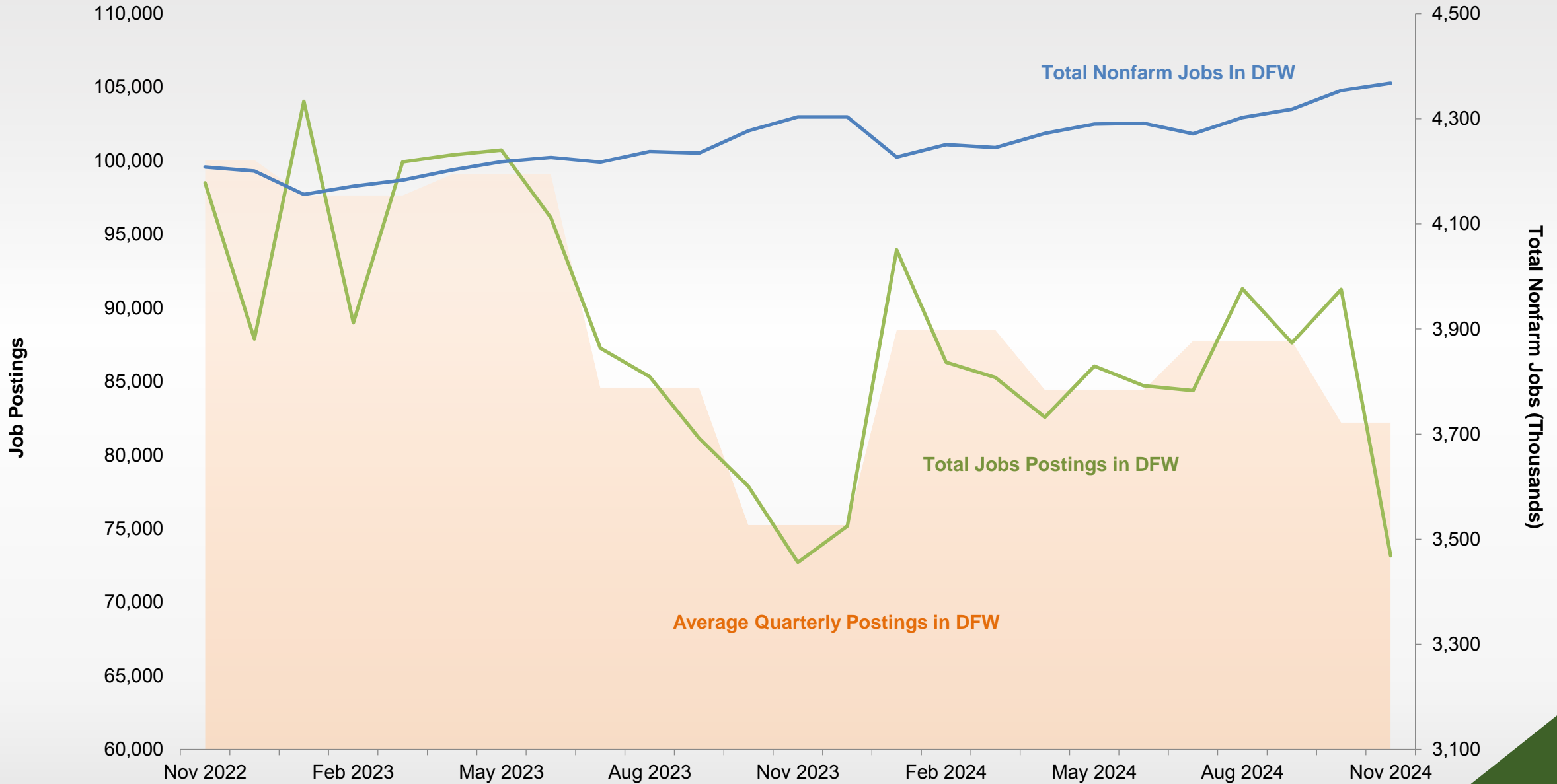
Total job postings saw a month-over-month decrease of **22.2%** in November. The top posted job in the region was **registered nurse**, with a month-over-month loss of over **15.2%**, from **3,481** to **2,953** postings. This was followed by **software developers** with **2,497** postings - representing a month-over-month loss of **24.7%**. In terms of *fastest* growing occupations, **cardiovascular technologist** took first rank with **224** new jobs, representing a month-over-month growth rate of over **139.1%**. In contrast, the fastest shrinking occupation was **social and human services assistant**, which saw a month-over-month decrease of **46.4%**.

The **Consumer Price Index** for DFW rose slightly by 0.15% from October to November. The CPI for southern remained unchanged. The state of Texas and U.S, however, experienced a fall of **-0.01%** and **-0.05** in it's CPI metric over the same time span.

See the Federal Reserve Bank of Dallas' [Texas Employment Forecast](#) and [DFW Economic Indicators](#) and the Bureau of Labor Statistics' [DFW](#) and [Southwest](#) CPI releases for a deeper analysis of these dynamics.



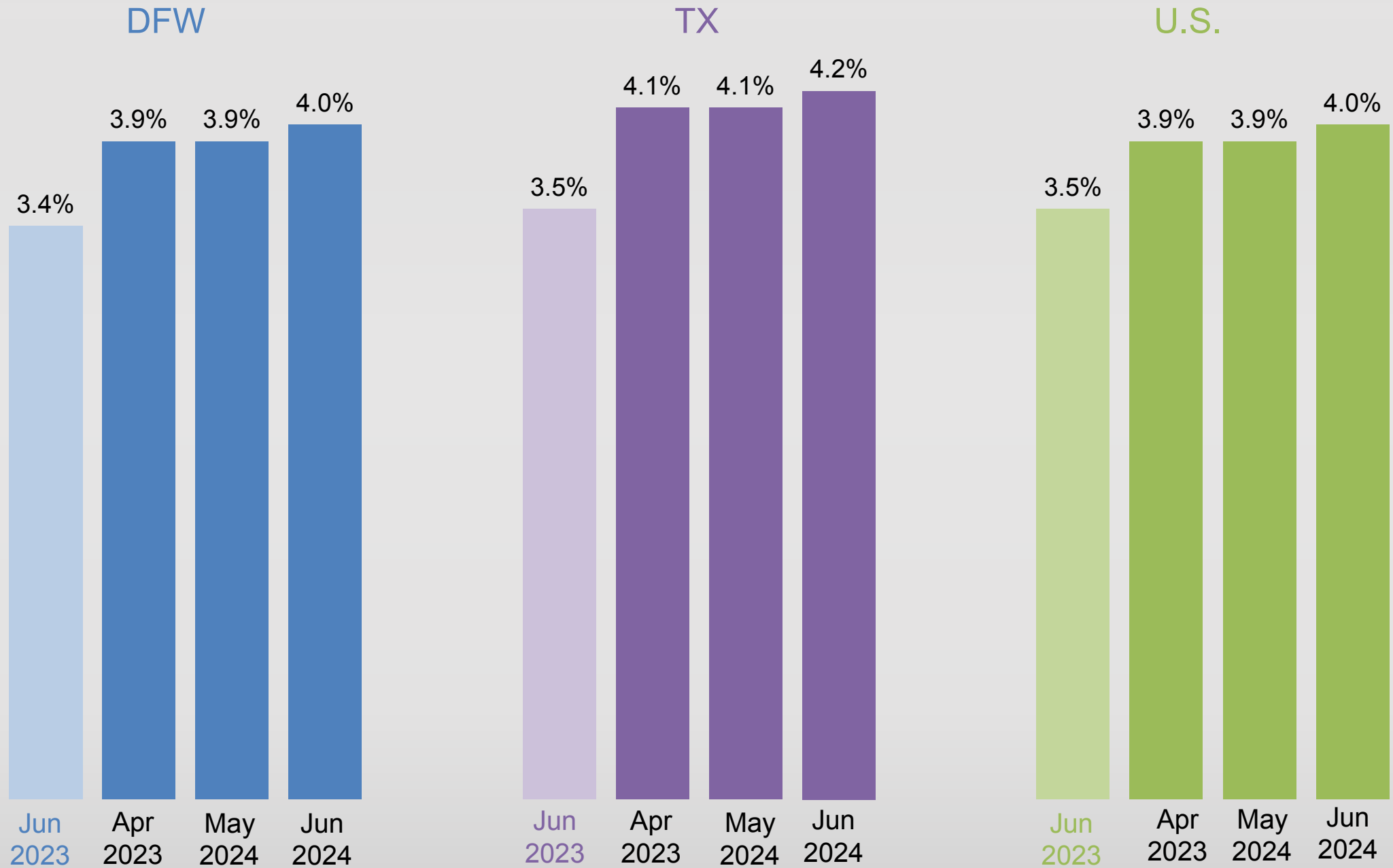
DFW – Job Postings vs. Nonfarm Jobs



* DFW includes Collin, Dallas, Denton, Ellis, Hunt, Johnson, Kaufman, Parker, Rockwall, Tarrant, and Wise counties.
 Source: Bureau of Labor Statistics State and Area Employment, Hours, and Earnings, Jan 2025. Lightcast, 2025.



Unemployment Rates* in DFW, Texas, and U.S.



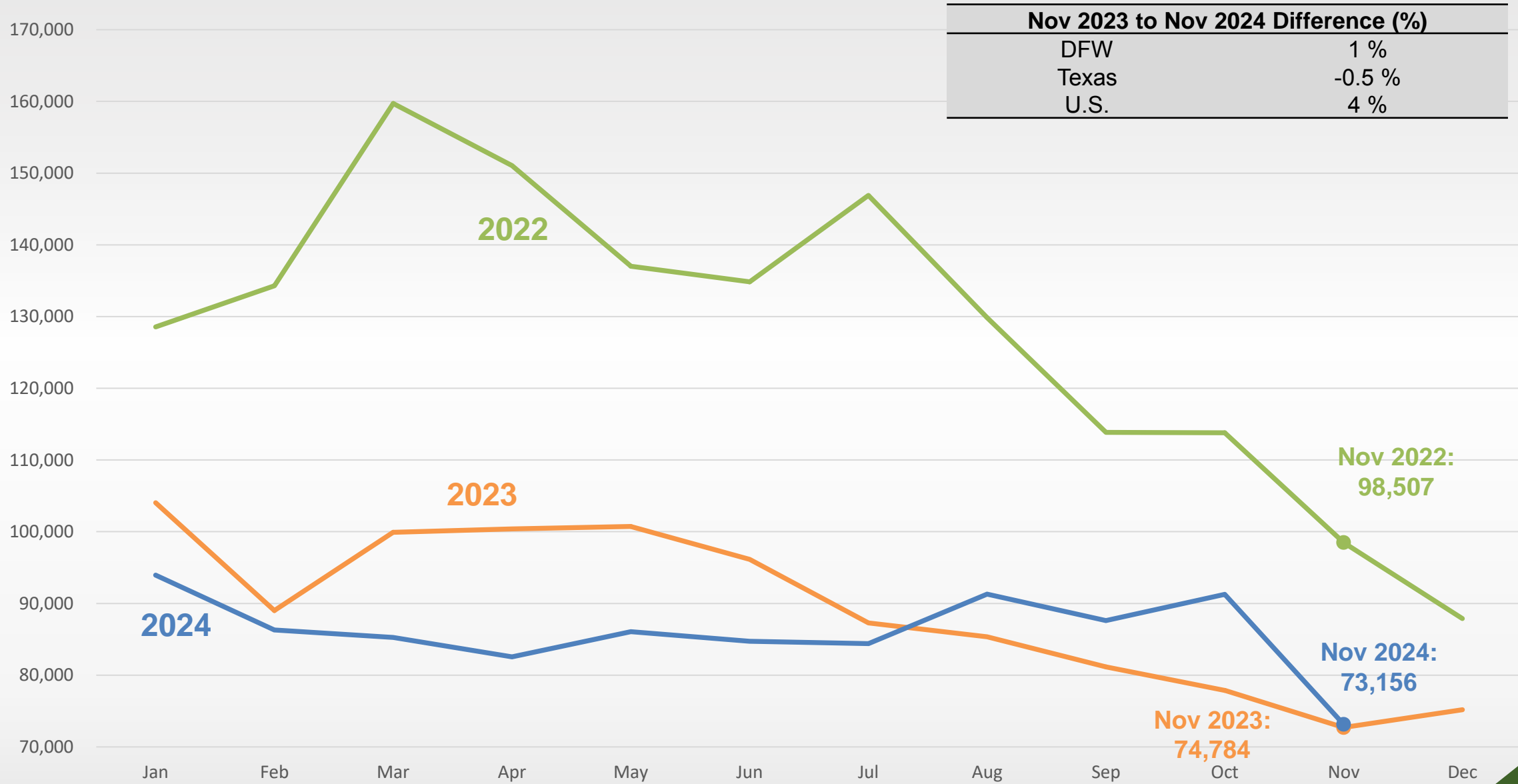
*Not seasonally adjusted.

Source: Bureau of Labor Statistics, Labor Force Statistics, Jan 2025.



DFW Total Job Postings Over the Years

Job Postings



Nov 2023 to Nov 2024 Difference (%)	
DFW	1 %
Texas	-0.5 %
U.S.	4 %

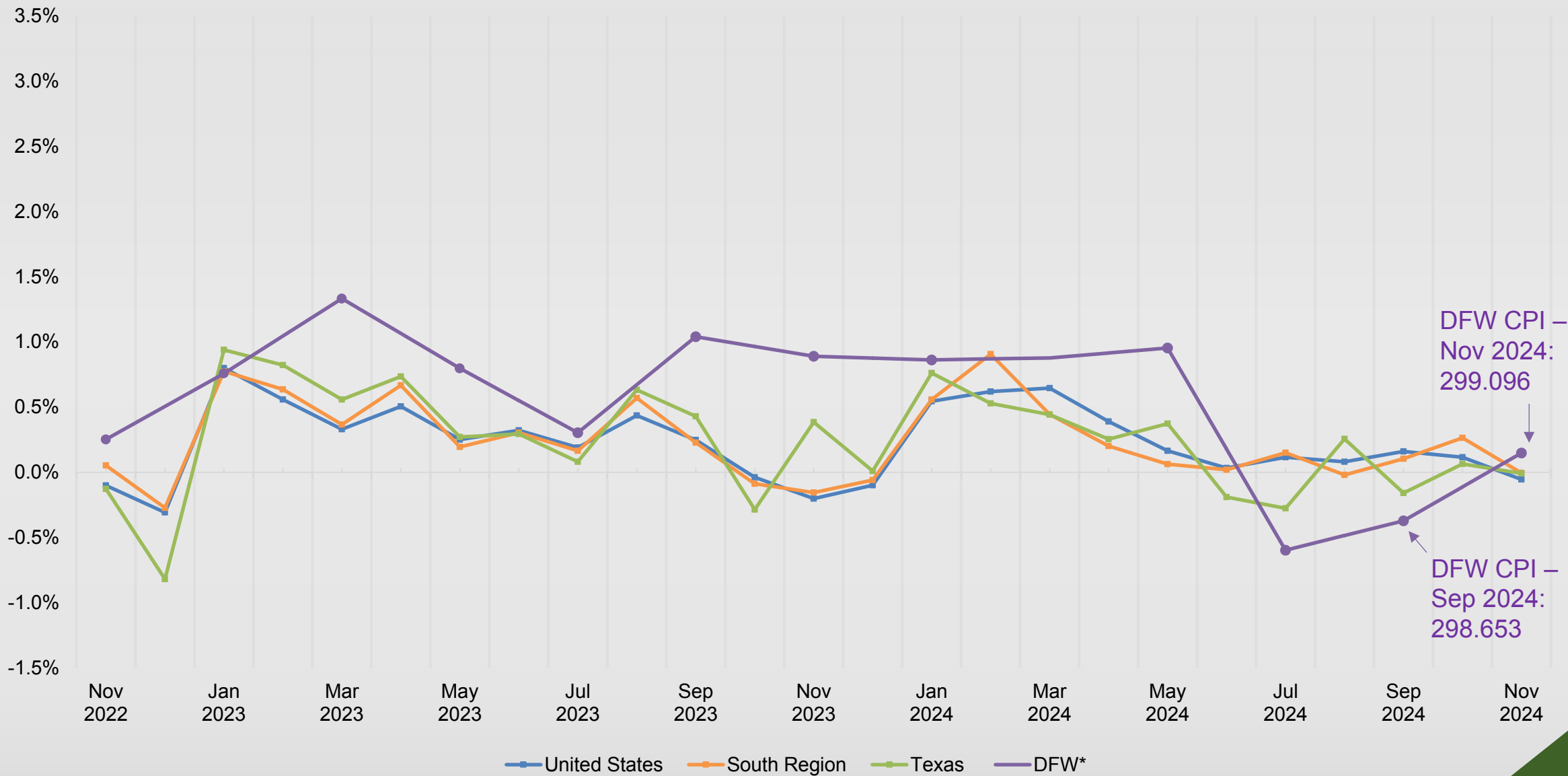
Source: Lightcast, 2025.

Note: Data for 'Unclassified Industries' is unavailable as of time of publication and calculated using total.



Change in Consumer Price Index

Monthly Change in Consumer Price Index



Note: Data for DFW is reported every other month. All other figures are reported monthly.
 Sources: Texas data sourced from the Texas Comptroller of Public Accounts, *Key Economic Indicators*, Jan 2025.
 All data for the U.S., South and DFW sourced from the Bureau of Labor Statistics, *CPI for All Urban Consumers (CPI-U)*, Jan 2025, and is not seasonally adjusted.



Top Occupations by Job Postings in DFW

Occupation	Median Annual Earnings	Median Advertised Salary	Average Monthly Hires	Nov. 2023 Unique Job Postings	Nov. 2024 Unique Job Postings	Change, Nov. 2023 to Nov. 2024 (%)
1 Registered nurses	\$93,338	\$88,320	2,172	4,543	2,953	-35.0%
2 Software developers	\$129,603	\$134,912	2,044	2,020	2,497	23.6%
3 Retail salespersons	\$31,379	\$33,408	7,253	2,326	1,987	-14.6%
4 Computer occupations, all other	\$102,795	\$140,160	735	1,490	1,749	17.4%
5 Sales representatives, wholesale and manufacturing, except technical and scientific products	\$63,505	\$75,136	1,172	1,096	1,279	16.7%
6 Heavy and tractor-trailer truck drivers	\$56,418	\$70,528	3,987	1,726	1,276	-26.1%
7 Customer service representatives	\$40,241	\$39,552	7,700	1,549	1,272	-17.9%
8 First-line supervisors of retail sales workers	\$44,520	\$44,416	1,555	1,181	1,083	-8.3%
9 General and operations managers	\$102,071	\$70,016	5,782	925	992	7.2%
10 Laborers and freight, stock, and material movers, hand	\$37,666	\$37,504	8,910	888	983	10.7%
All occupations	-	-	-	74,784	73,156	-2.2%

Source: Lightcast, 2025.



Top Occupations by Job Postings in DFW

Occupation		Sep. 2024 Unique Job Postings	Oct. 2024 Unique Job Postings	Nov. 2024 Unique Job Postings	Change, Oct. 2024 to Nov. 2024 (%)
1	Registered nurses	3,489	3,481	2,953	-15.2%
2	Software developers	3,352	3,316	2,497	-24.7%
3	Retail salespersons	2,426	2,576	1,987	-22.9%
4	Computer occupations, all other	2,187	2,251	1,749	-22.3%
5	Sales representatives, wholesale and manufacturing, except technical and scientific products	1,400	1,575	1,279	-18.8%
6	Heavy and tractor-trailer truck drivers	1,691	1,491	1,276	-14.4%
7	Customer service representatives	1,522	1,735	1,272	-26.7%
8	First-line supervisors of retail sales workers	1,477	1,435	1,083	-24.5%
9	General and operations managers	1,125	1,166	992	-14.9%
10	Laborers and freight, stock, and material movers, hand	1,152	1,234	983	-20.3%
All occupations		90,483	94,055	73,156	-22.2%



Positive Change in Demand by Jobs Postings in DFW

	Occupation	Median Annual Earnings	Median Advertised Salary	Average Monthly Hires	Oct. 2024 Unique Job Postings	Nov. 2024 Unique Job Postings	Month-over-month Change
1	Cardiovascular Technologists and Technicians	\$47,076	\$76,032	33	161	385	139.1%
2	Airline Pilots, Copilots, and Flight Engineers	\$245,341	\$63,488	171	16	33	106.3%
3	Optometrists	\$137,148	\$129,792	17	28	49	75.0%
4	Clinical Laboratory Technologists and Technicians	\$58,494	\$76,160	273	201	337	67.7%
5	Shuttle Drivers and Chauffeurs	\$35,705	\$40,576	337	30	45	50.0%
6	School Psychologists	\$78,667	\$96,512	41	40	55	37.5%
7	Substance Abuse, Behavioral Disorder, and Mental Health Counselors	\$56,665	\$105,216	270	85	115	35.3%
8	Architects, Except Landscape and Naval	\$83,234	\$107,008	103	45	60	33.3%
9	Landscaping and Groundskeeping Workers	\$36,732	\$34,432	1,778	146	177	21.2%
10	Tax Preparers	\$57,628	\$66,944	203	226	273	20.8%
	All occupations	-	-	-	94,055	73,156	-22.2%

Source: Lightcast, 2025.



Negative Change in Demand by Jobs Postings in DFW

	Occupation	Median Annual Earnings	Median Advertised Salary	Average Monthly Hires	Oct. 2024 Unique Job Postings	Nov. 2024 Unique Job Postings	Month-over-month Change
1	First-Line Supervisors of Food Preparation and Serving Workers	\$37,035	\$43,136	2,885	743	410	-44.8%
2	Financial Managers	\$162,189	\$134,912	826	1240	797	-35.7%
3	Human Resources Specialists	\$63,263	\$60,032	1,907	739	485	-34.4%
4	Medical Assistants	\$40,198	\$39,552	1,209	693	480	-30.7%
5	Database Administrators	\$117,084	\$120,064	83	644	461	-28.4%
6	Project Management Specialists	\$95,787	\$105,344	1,462	1008	740	-26.6%
7	Accountants and Auditors	\$80,489	\$81,280	1,722	742	551	-25.7%
8	Data Scientists	\$109,649	\$122,752	290	1072	801	-25.3%
9	Fast Food and Counter Workers	\$26,308	\$29,568	15,472	1206	902	-25.2%
10	Maintenance and Repair Workers, General	\$44,270	\$52,096	1,973	1167	889	-23.8%
	All occupations	-	-	-	94,055	73,156	-22.2%

DFW Employment by Industry

Industry	Nov. 2023 Employment	Sep. 2024 Employment	Oct. 2024 Employment	Nov. 2024 Employment	Change, Nov. 2023 to Nov. 2024 (%)	Change, Oct. 2024 to Nov. 2024 (%)
Mining, quarrying, and oil and gas extraction	108,600	113,100	112,300	112,600	3.7%	0.3%
Construction	143,200	145,800	145,700	146,000	2.0%	0.2%
Manufacturing	310,400	315,000	315,700	314,800	1.4%	-0.3%
Wholesale and retail trade	645,500	636,500	644,600	651,900	1.0%	1.1%
Transportation and utilities	278,400	272,300	275,800	280,700	0.8%	1.8%
Information	91,300	91,700	91,800	93,100	2.0%	1.4%
Financial activities	368,700	378,500	382,600	383,900	4.1%	0.3%
Professional and business services	792,100	786,800	792,900	789,100	-0.4%	-0.5%
Education and health services	513,700	524,000	525,600	527,400	2.7%	0.3%
Leisure and hospitality	427,200	429,100	430,900	429,900	0.6%	-0.2%
Other services	137,800	143,200	142,900	142,000	3.0%	-0.6%
Government	486,500	482,200	493,000	496,500	2.1%	0.7%
Total nonfarm	4,303,400	4,318,200	4,353,800	4,367,900	1.5%	0.3%

Numbers may not sum due to rounding. Employment is not seasonally adjusted.

* DFW includes Collin, Dallas, Denton, Ellis, Hunt, Johnson, Kaufman, Parker, Rockwall, Tarrant, and Wise counties.

Source: Bureau of Labor Statistics State and Area Employment, Hours, and Earnings, Jan 2025.



DFW vs. U.S. Employment by Industry

Industry	DFW Nov. 2024 Employment	DFW Nov. 2024 Employment Share (%)	DFW Employment Change, Nov. 2023 to Nov. 2024 (%)	U.S. Nov. 2024 Employment	U.S. Nov. 2024 Employment Share (%)	U.S. Employment Change, Nov. 2023 to Nov. 2024 (%)
Mining, quarrying, and oil and gas extraction	112,600	2.6%	3.7%	642,000	0.4%	0.0%
Construction	146,000	3.3%	2.0%	8,381,000	5.2%	2.5%
Manufacturing	314,800	7.2%	1.4%	12,888,000	8.0%	-0.5%
Wholesale and retail trade	651,900	14.9%	1.0%	22,154,800	13.8%	0.3%
Transportation and utilities	280,700	6.4%	0.8%	7,429,100	4.6%	1.4%
Information	93,100	2.1%	2.0%	2,999,000	1.9%	-0.5%
Financial activities	383,900	8.8%	4.1%	9,295,000	5.8%	0.6%
Professional and business services	789,100	18.1%	-0.4%	23,129,000	14.4%	0.3%
Education and health services	527,400	12.1%	2.7%	26,987,000	16.8%	3.7%
Leisure and hospitality	429,900	9.8%	0.6%	16,763,000	10.4%	1.6%
Other services	142,000	3.3%	3.0%	5,929,000	3.7%	1.1%
Government	496,500	11.4%	2.1%	23,963,000	14.9%	2.1%
Total nonfarm	4,367,900	100.0%	1.5%	160,560,000	100.0%	1.4%

Numbers may not sum due to rounding. Employment is not seasonally adjusted.

* DFW includes Collin, Dallas, Denton, Ellis, Hunt, Johnson, Kaufman, Parker, Rockwall, Tarrant, and Wise counties.

Source: Bureau of Labor Statistics State and Area Employment, Hours, and Earnings, and Current Employment Statistics, Jan 2025.

SUBSCRIBE

to the
Economic Development Update
newsletter

QUESTIONS?

economicengine@utdallas.edu
economicengine.utdallas.edu