



**DFW
LABOR MARKET
UPDATE
SEPTEMBER 2022**

Published November 9, 2022
Prepared by Raphael Kotey Dzanie

Summary

The overall labor market conditions for September show lingering uncertainty in the economy but bring a limited return to growth with **4,800 new jobs** added since last month. Consistent with employment trends across the country, businesses in DFW appear to be slowing down on hiring as recession fears grow with job postings falling in September for a second month in a row. DFW employers listed **116,042 job postings** in September, which is **7.2% less** than last month and **8.1% less** than September 2021.

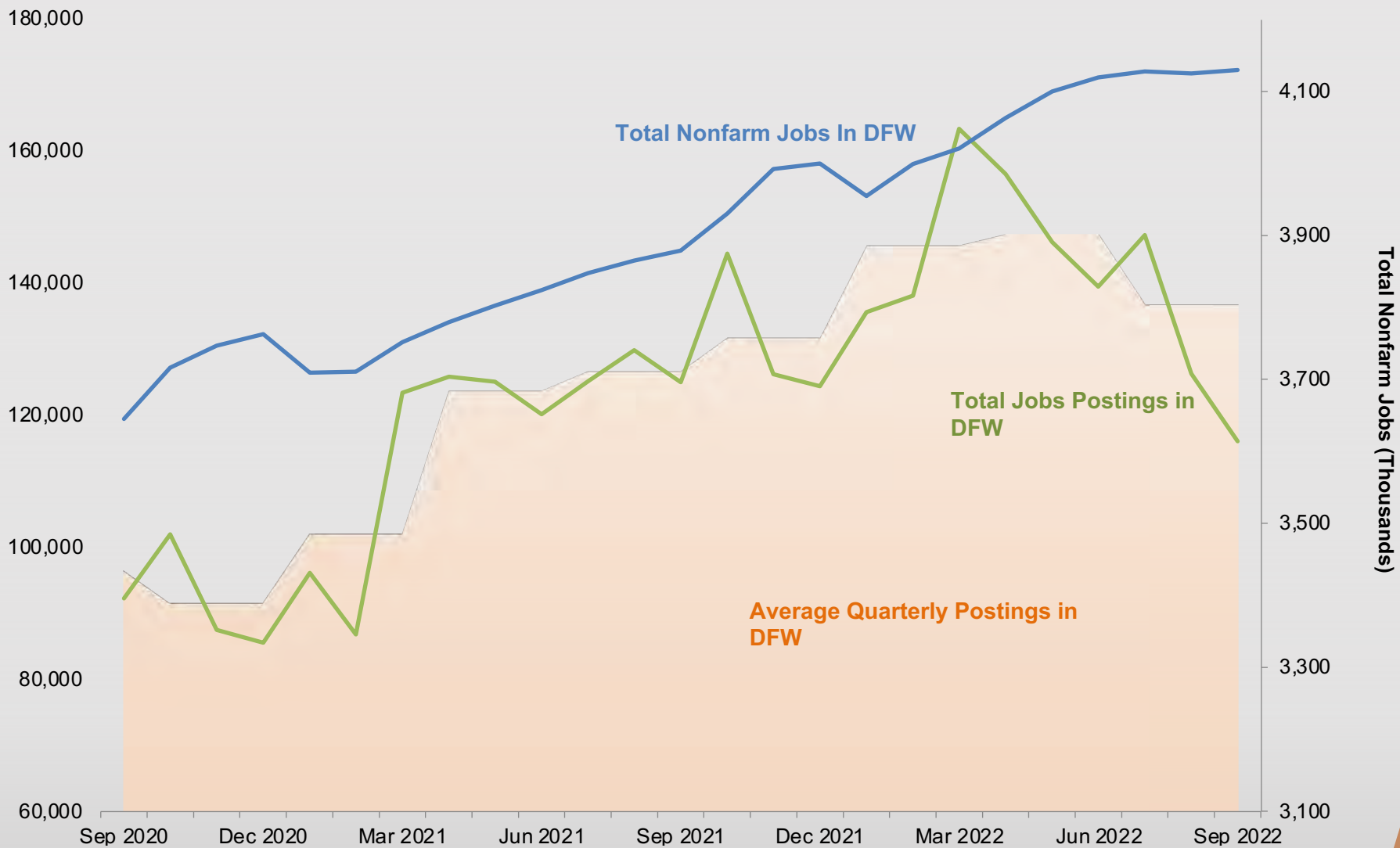
Despite the total decline in job postings, three of the top ten occupations, retail salespersons, wholesale and manufacturing sale representatives and retail supervisors, recorded **gains** from the previous month. However, when comparing to the previous year, only registered nurses and managers showed **positive** increases in job postings, with all others falling below their 2021 counterparts. Looking at other occupations, job postings for counselors almost **tripled** from the previous month and, in a reverse of last month's trends, some of the fastest growing occupations in the region were hairdressers and cardiovascular technicians.

The unemployment rate stood at **3.4%** for the month of September in DFW, placing it below the state average but slightly above the national average. The Consumer Price Index for the metro rose by **0.5%** in September, which puts it more in line with the broader national and state trends which have seen low or even negative growth in prices since July.

See the Federal Reserve Bank of Dallas' [Texas Employment Forecast](#) and [DFW Economic Indicators](#) for deeper analysis of these dynamics.

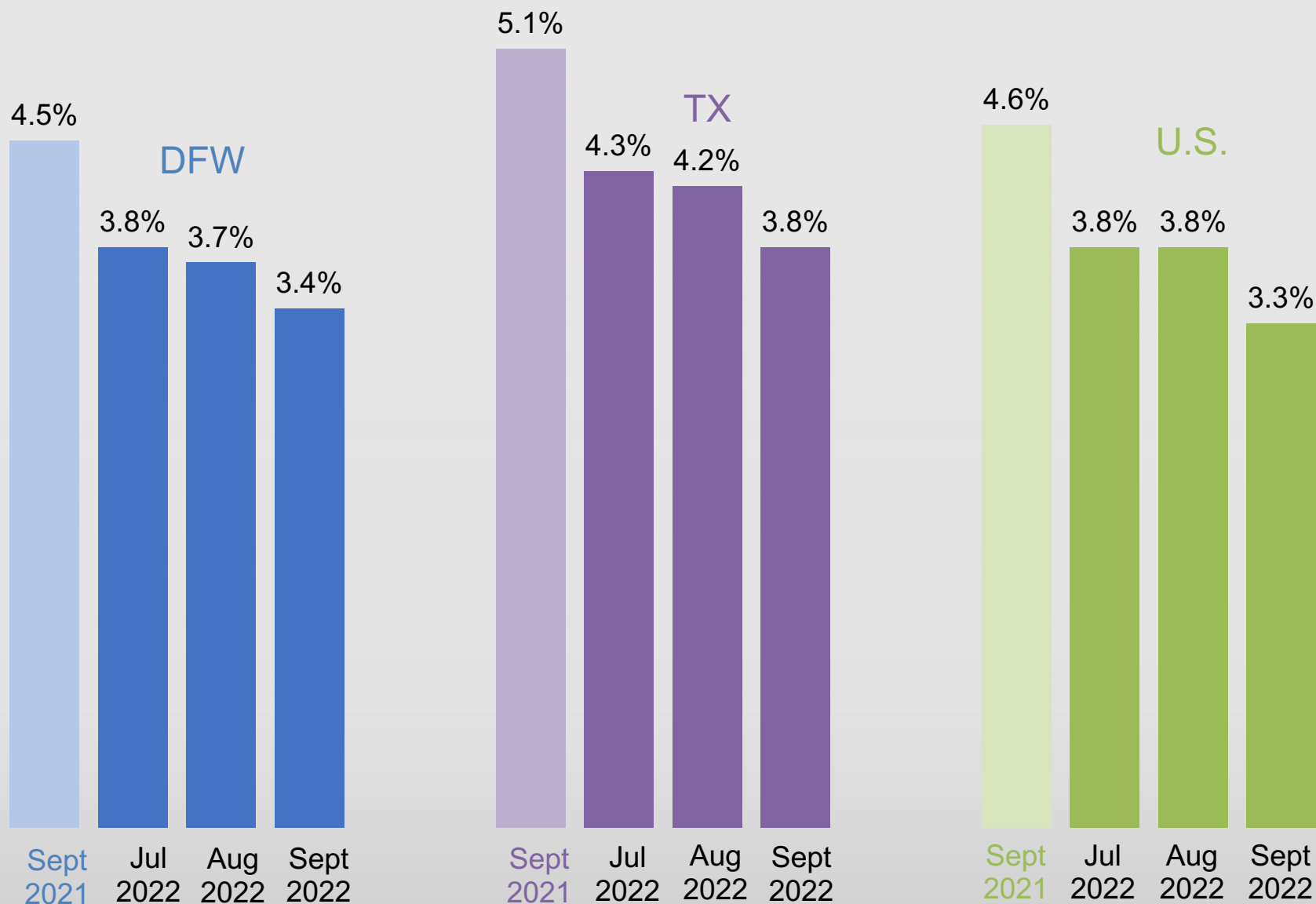


DFW – Job Postings vs. Nonfarm Jobs



* DFW includes Collin, Dallas, Denton, Ellis, Hunt, Johnson, Kaufman, Parker, Rockwall, Tarrant, and Wise counties.
 Source: Bureau of Labor Statistics State and Area Employment, Hours, and Earnings, November 2022. Lightcast, 2022.

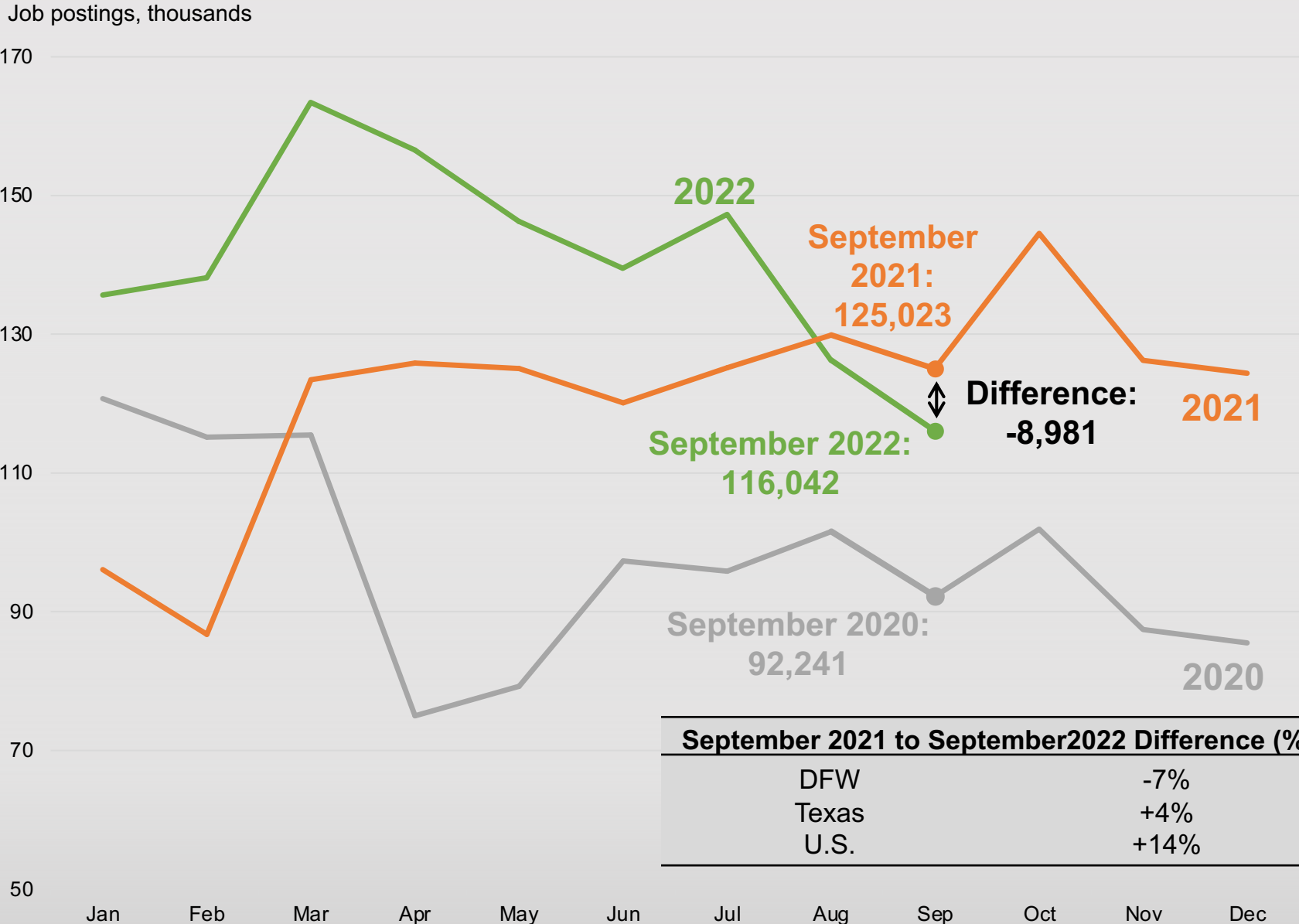
Unemployment Rates* in DFW, Texas, and U.S.



*Not seasonally adjusted.

Source: Bureau of Labor Statistics, Labor Force Statistics, November 2022.

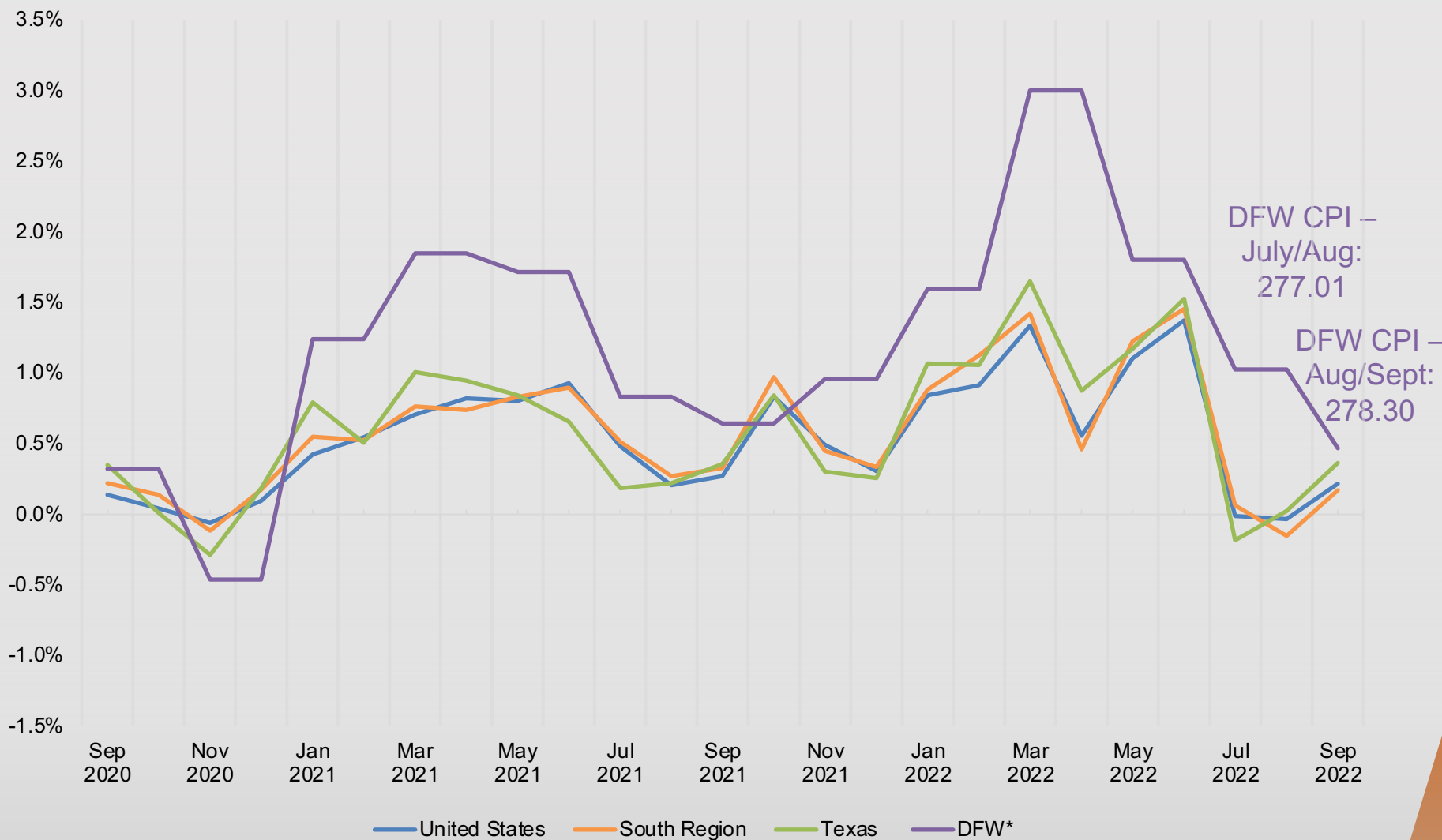
DFW Total Job Postings Over the Years



Source: Lightcast, 2022.

Change in Consumer Price Index

Monthly Change in Consumer Price Index



Note: Data for DFW is reported every other month. All other figures are reported monthly.

Source: Texas Comptroller of Public Accounts, Key Economic Indicators, November 1, 2022. Bureau of Labor Statistics, CPI for All Urban Consumers (CPI-U), November 2022.

Top Occupations by Job Postings in DFW

	Occupation	Median Annual Earnings	Median Advertised Salary	Average Monthly Hires	Sep. 2021 Unique Job Postings	Sep. 2022 Unique Job Postings	Change, Sep. 2021 to Sep. 2022 (%)
1	Registered nurses	\$78,647	\$93,440	1,650	4,637	5,373	15.9%
2	Software developers	\$119,562	\$127,744	2,079	4,808	4,229	-12.0%
3	Retail salespersons	\$27,110	\$31,104	8,616	3,506	3,062	-12.7%
4	Sales representatives, wholesale and manufacturing, except technical and scientific products	\$62,027	\$62,592	1,249	3,148	2,937	-6.7%
5	Customer service representatives	\$36,673	\$35,968	6,865	2,862	2,424	-15.3%
6	Fast food and counter workers	\$23,145	\$27,072	15,203	2,451	2,257	-7.9%
7	Computer occupations, all other	\$89,371	\$125,184	420	2,222	2,107	-5.2%
8	First-line supervisors of retail sales workers	\$42,420	\$38,528	1,906	2,227	2,049	-8.0%
9	Managers, all other	\$130,805	\$89,856	630	1,915	1,951	1.9%
10	Laborers and freight, stock, and material movers, hand	\$30,542	\$34,944	11,218	2,715	1,870	-31.1%
	All occupations	-	-	-	125,023	116,042	-7.2%

Top Occupations by Job Postings in DFW

	Occupation	Jul. 2022 Unique Job Postings	Aug. 2022 Unique Job Postings	Sep. 2022 Unique Job Postings	Change, Aug. 2022 to Sep. 2022 (%)
1	Registered nurses	8,949	5,462	5,373	-1.6%
2	Software developers	6,062	4,564	4,229	-7.3%
3	Retail salespersons	3,069	2,831	3,062	8.2%
4	Sales representatives, wholesale and manufacturing, except technical and scientific products	3,523	2,841	2,937	3.4%
5	Customer service representatives	3,358	2,606	2,424	-7.0%
6	Fast food and counter workers	2,225	3,073	2,257	-26.6%
7	Computer occupations, all other	2,817	2,242	2,107	-6.0%
8	First-line supervisors of retail sales workers	2,431	2,023	2,049	1.3%
9	Managers, all other	2,300	2,198	1,951	-11.2%
10	Laborers and freight, stock, and material movers, hand	2,170	1,967	1,870	-4.9%
	All occupations	147,299	126,278	116,042	-8.1%

Positive Change in Demand by Jobs Postings in DFW

	Occupation	Median Annual Earnings	Median Advertised Salary	Average Monthly Hires	Aug. 2022 Unique Job Postings	Sep. 2022 Unique Job Postings	Month-over-month Change
1	Counselors, All Other	\$61,726	\$77,696	35	56	221	294.6%
2	Hairdressers, Hairstylists, and Cosmetologists	\$28,176	\$52,096	602	115	250	117.4%
3	Cardiovascular Technologists and Technicians	\$60,751	\$80,768	34	109	186	70.6%
4	Purchasing Managers	\$127,935	\$97,536	64	145	230	58.6%
5	Mechanical Engineers	\$99,508	\$97,536	168	184	275	49.5%
6	Licensed Practical and Licensed Vocational Nurses	\$51,799	\$59,136	779	767	865	12.8%
All occupations		-	-	126,278	116,042		-8.1%

Negative Change in Demand by Jobs Postings in DFW

	Occupation	Median Annual Earnings	Median Advertised Salary	Average Monthly Hires	Aug. 2022 Unique Job Postings	Sep. 2022 Unique Job Postings	Month-over-month Change
1	Food Preparation Workers	\$28,122	\$29,056	1,415	802	385	-52.0%
2	Cooks, Restaurant	\$30,608	\$31,104	4,253	2404	1317	-45.2%
3	Chefs and Head Cooks	\$49,952	\$41,600	272	274	173	-36.9%
4	Teaching Assistants, Except Postsecondary	\$23,840	\$30,080	686	369	254	-31.2%
5	Food Service Managers	\$62,135	\$50,048	320	1561	1087	-30.4%
6	Bartenders	\$22,827	\$39,616	1,335	620	444	-28.4%
7	Waiters and Waitresses	\$21,559	\$33,472	7,448	2188	1582	-27.7%
8	Hotel, Motel, and Resort Desk Clerks	\$27,234	\$29,056	635	820	595	-27.4%
9	Cashiers	\$23,969	\$26,048	8,390	1383	1021	-26.2%
10	Dining Room and Cafeteria Attendants and Bartender Helpers	\$22,674	\$27,072	1,172	676	507	-25.0%
	All occupations	-	-	-	126,278	116,042	-8.1%

DFW Employment by Industry

Industry	Sep. 2021 Employment	Jul. 2022 Employment	Aug. 2022 Employment	Sep. 2022 Employment	Change, Sep. 2021 to Sep. 2022 (%)	Change, Aug. 2022 to Sep. 2022 (%)
Mining, quarrying, and oil and gas extraction	91,700	97,100	95,100	95,900	4.6%	0.8%
Construction	128,100	135,200	134,700	137,800	7.6%	2.3%
Manufacturing	285,900	301,700	300,600	300,900	5.2%	0.1%
Wholesale and retail trade	595,100	626,400	626,000	626,600	5.3%	0.1%
Transportation and utilities	246,300	263,900	264,900	264,200	7.3%	-0.3%
Information	82,900	88,300	87,600	87,700	5.8%	0.1%
Financial activities	347,200	371,500	369,800	368,000	6.0%	-0.5%
Professional and business services	698,800	763,000	757,200	757,700	8.4%	0.1%
Education and health services	458,300	489,000	494,500	492,600	7.5%	-0.4%
Leisure and hospitality	372,300	430,500	421,600	418,700	12.5%	-0.7%
Other services	122,600	134,100	133,800	133,900	9.2%	0.1%
Government	449,400	426,800	439,200	445,800	-0.8%	1.5%
Total nonfarm	3,878,600	4,127,500	4,125,000	4,129,800	6.5%	0.1%

Numbers may not sum due to rounding. Employment is not seasonally adjusted.

* DFW includes Collin, Dallas, Denton, Ellis, Hunt, Johnson, Kaufman, Parker, Rockwall, Tarrant, and Wise counties.

Source: Bureau of Labor Statistics State and Area Employment, Hours, and Earnings, November 2022.

DFW vs. U.S. Employment by Industry

Industry	DFW Sep. 2022 Employment	DFW Sep. 2022 Employment Share (%)	DFW Employment Change, Sep. 2021 to Sep. 2022 (%)	U.S. Sep. 2022 Employment	U.S. Sep. 2022 Employment Share (%)	U.S. Employment Change, Sep. 2021 to Sep. 2022 (%)
Mining, quarrying, and oil and gas extraction	95,900	2.3%	4.6%	637,000	0.4%	10.0%
Construction	137,800	3.3%	7.6%	7,877,000	5.1%	3.7%
Manufacturing	300,900	7.3%	5.2%	12,895,000	8.4%	3.8%
Wholesale and retail trade	626,600	15.2%	5.3%	21,562,800	14.1%	2.4%
Transportation and utilities	264,200	6.4%	7.3%	7,023,100	4.6%	5.2%
Information	87,700	2.1%	5.8%	3,042,000	2.0%	5.9%
Financial activities	368,000	8.9%	6.0%	8,969,000	5.9%	1.9%
Professional and business services	757,700	18.3%	8.4%	22,466,000	14.7%	4.7%
Education and health services	492,600	11.9%	7.5%	24,624,000	16.1%	3.9%
Leisure and hospitality	418,700	10.1%	12.5%	15,979,000	10.4%	8.3%
Other services	133,900	3.2%	9.2%	5,718,000	3.7%	3.6%
Government	445,800	10.8%	-0.8%	22,404,000	14.6%	0.9%
Total nonfarm	4,129,800	100.0%	6.5%	153,197,000	100.0%	3.8%

Numbers may not sum due to rounding. Employment is not seasonally adjusted.

* DFW includes Collin, Dallas, Denton, Ellis, Hunt, Johnson, Kaufman, Parker, Rockwall, Tarrant, and Wise counties.

Source: Bureau of Labor Statistics State and Area Employment, Hours, and Earnings, and Current Employment Statistics, November 2022.

Questions?

Please contact Cody Gibbs at Cody.Gibbs@UTDallas.edu
or visit us at <https://economicengine.utdallas.edu/>

[Subscribe](#) to the Economic Development Update, released the second
and fourth Wednesday of every month.