



**DFW
LABOR MARKET
UPDATE
JUNE 2022**

Published August 10, 2022

Summary

The numbers reported for June show that DFW is still showing signs of job growth, with **18,200 new jobs** added this month for a total of **4,119,000** in the Metroplex. Growth was led by the Leisure and Hospitality industry, which added 10,500 new jobs. The **unemployment rate**, which began to increase last month, has seen a **continued rise** into June. This seems supported by other metrics including the total job postings which has seen a significant **decrease** from May.

Of all the top postings for this month, the only group to show growth from the previous month was **registered nurses**, which had an increase of **38.4%**. Medical City Healthcare represented the largest company by postings, with 984 unique openings and 10,889 total postings. Overall, the occupation has shown an above average posting intensity of 5-to-1, meaning for every 5 postings there is 1 unique job posting.

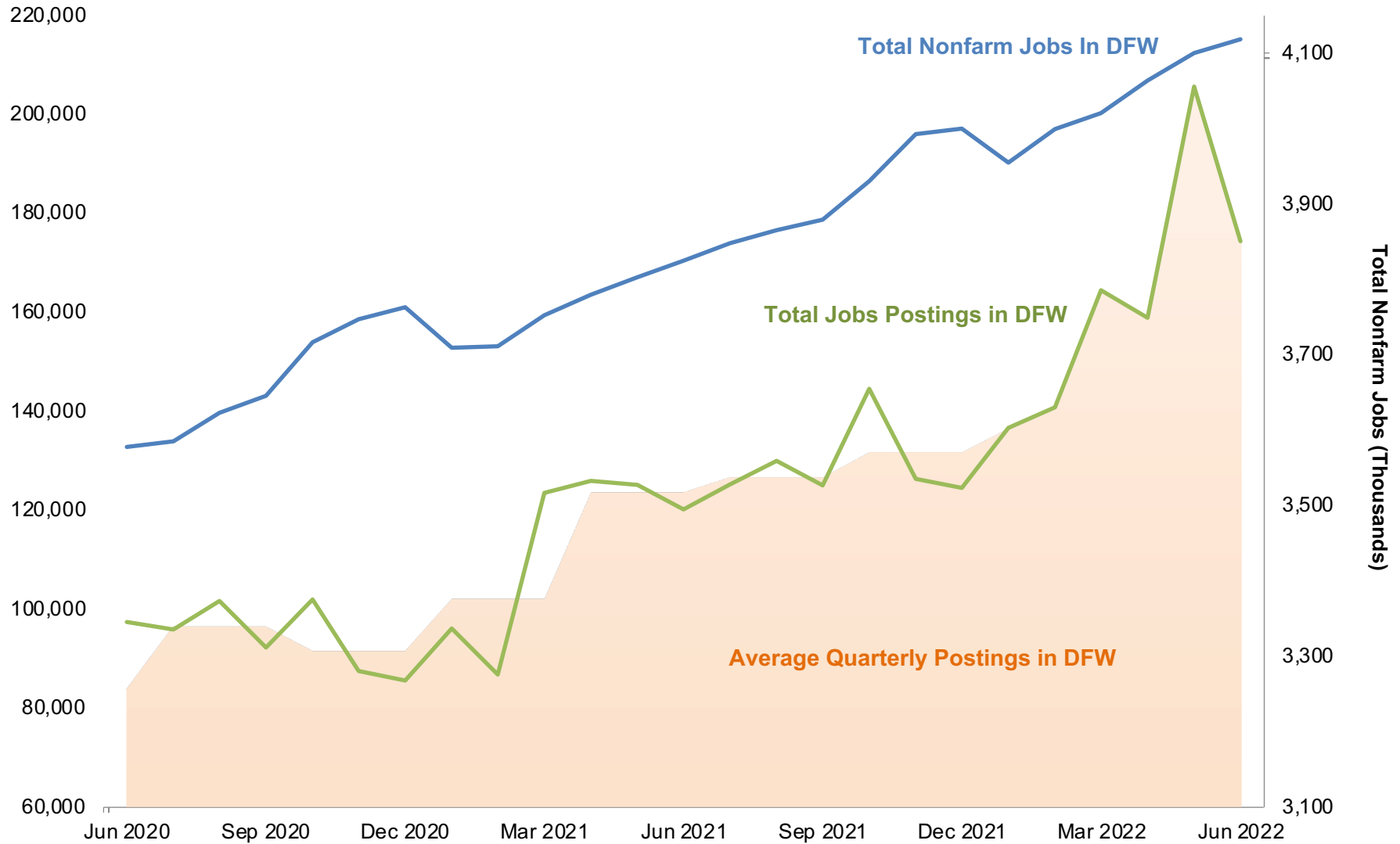
Similar to registered nurses above, one of the fastest growing occupations from the previous month was **licensed practical and vocational nurses**, which was an increase by nearly 22.6% from May. However, in the opposite direction the fastest **decreasing** occupations by job postings were mostly related to the **food industry** including cooks, bakers, and waiters and waitresses.

The available CPI figures point towards a continued **increase in prices** for the national, Texan, and Southern economies. While DFW has not been released for this month, it will likely follow these trends, as was seen in previous reports.

See the Federal Reserve Bank of Dallas' [Texas Employment Forecast](#) and [DFW Economic Indicators](#) for deeper analysis of these dynamics.



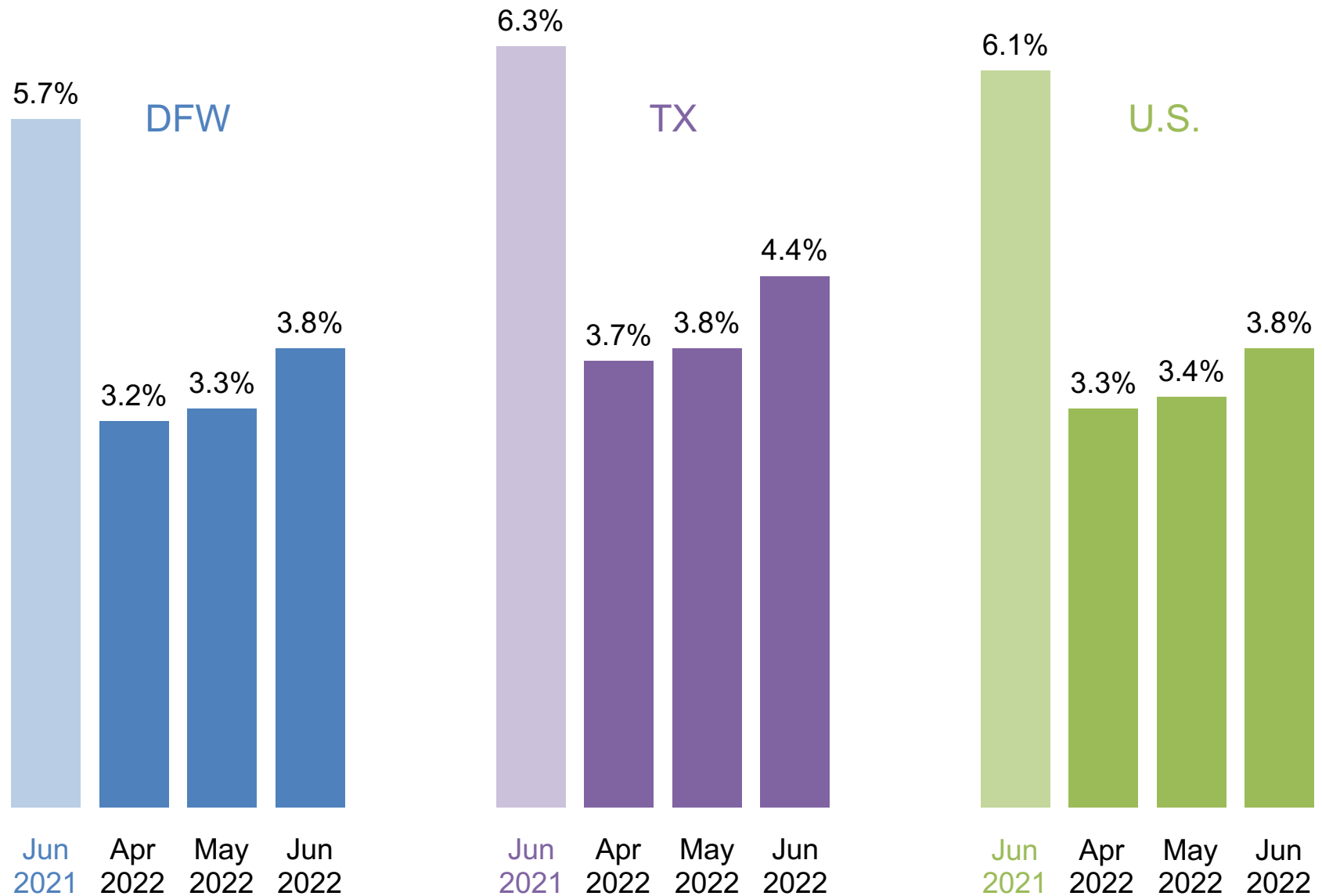
DFW – Job Postings vs. Nonfarm Jobs



* DFW includes Collin, Dallas, Denton, Ellis, Hunt, Johnson, Kaufman, Parker, Rockwall, Tarrant, and Wise counties.
 Source: Bureau of Labor Statistics State and Area Employment, Hours, and Earnings, August 2022. Lightcast, 2022.



Unemployment Rates* in DFW, Texas, and U.S.



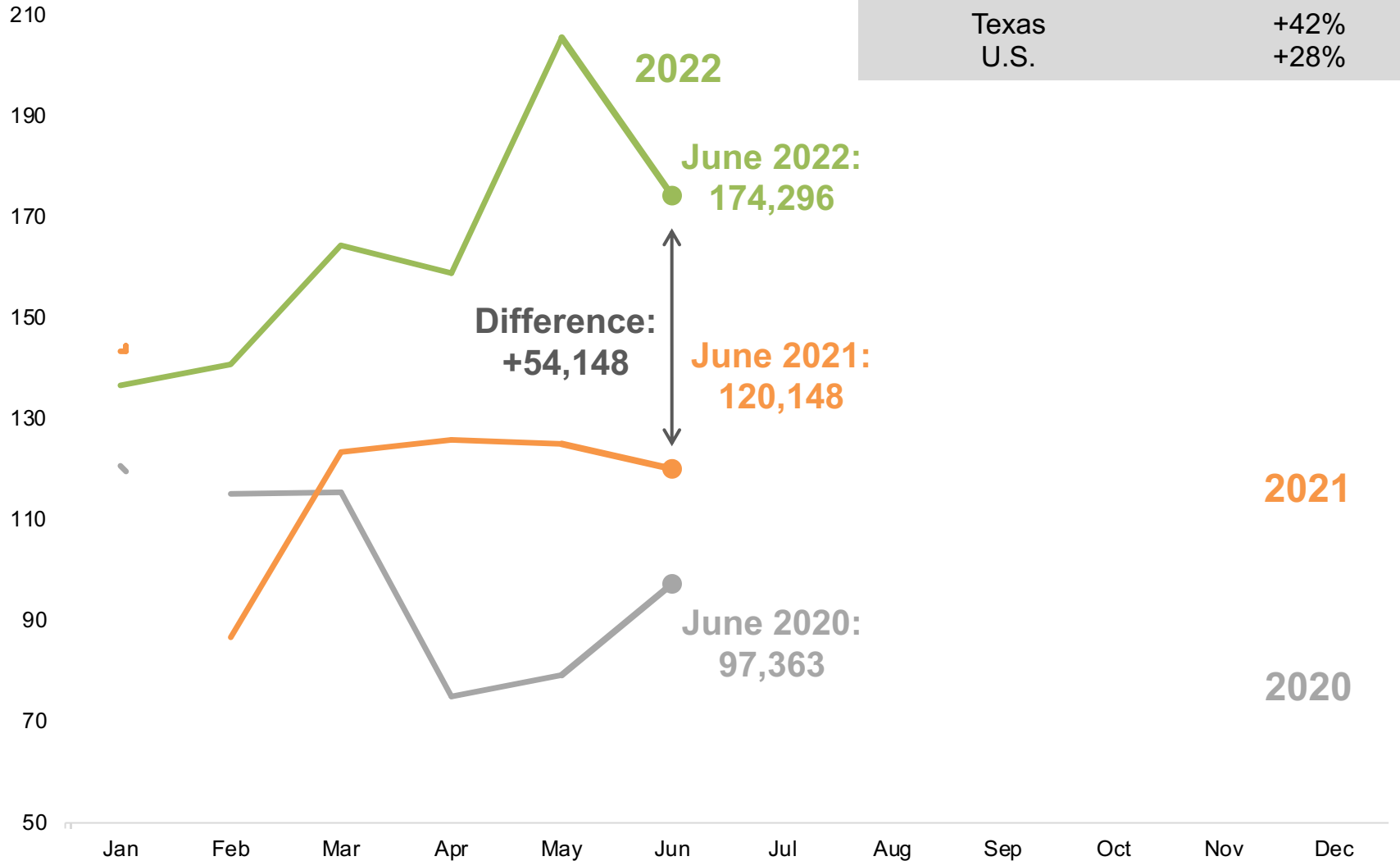
*Not seasonally adjusted.

Source: Bureau of Labor Statistics, Labor Force Statistics, August 2022.



DFW Total Job Postings Over the Years

Job postings, thousands



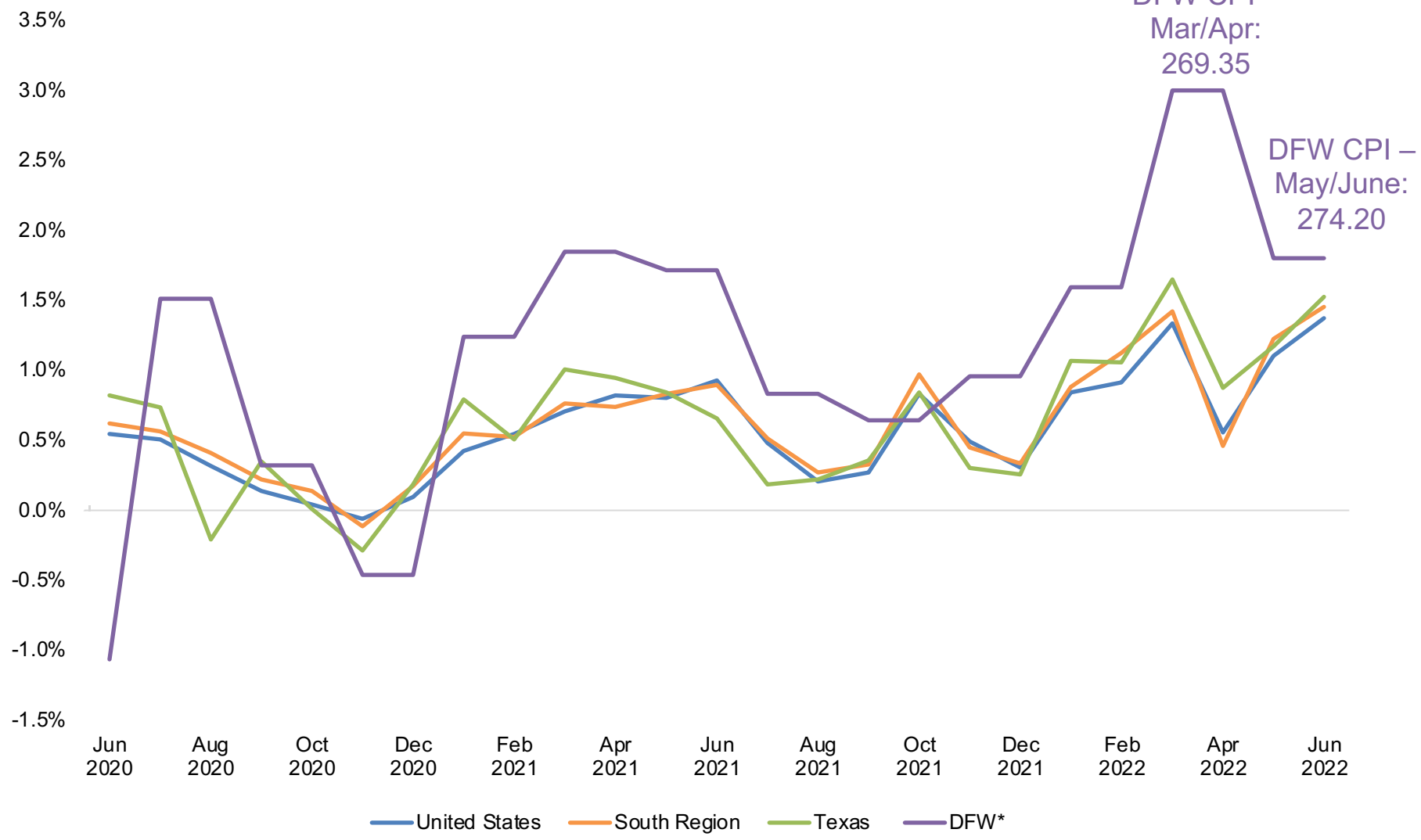
June 2021 to June 2022 Difference (%)	
DFW	+45%
Texas	+42%
U.S.	+28%

Source: Lightcast, 2022.



Change in Consumer Price Index

Monthly Change in Consumer Price Index



Note: Data for DFW is reported every other month. All other figures are reported monthly.
 Source: Texas Comptroller of Public Accounts, Key Economic Indicators, August 4, 2022. Bureau of Labor Statistics, CPI for All Urban Consumers (CPI-U), August 2022.



Top Occupations by Job Postings in DFW

	Occupation	Median Annual Earnings	Median Advertised Salary	Average Monthly Hires	Jun. 2021 Unique Job Postings	Jun. 2022 Unique Job Postings	Change, Jun. 2021 to Jun. 2022 (%)
1	Software developers	\$119,563	\$134,912	2,077	4,937	10,360	109.8%
2	Registered nurses	\$78,642	\$78,080	1,649	4,205	9,944	136.5%
3	Computer occupations, all other	\$89,369	\$123,648	419	2,310	4,440	92.2%
4	Sales representatives, wholesale and manufacturing, except technical and scientific products	\$62,027	\$60,288	1,243	3,615	4,280	18.4%
5	Customer service representatives	\$36,688	\$35,456	6,858	3,121	3,305	5.9%
6	Managers, all other	\$130,802	\$94,464	630	1,838	3,099	68.6%
7	Accountants and auditors	\$79,228	\$80,128	1,656	1,163	2,873	147.0%
8	Retail salespersons	\$27,138	\$31,104	8,615	2,892	2,824	-2.4%
9	Heavy and tractor-trailer truck drivers	\$48,189	\$70,528	4,286	2,534	2,688	6.1%
10	Laborers and freight, stock, and material movers, hand	\$30,476	\$33,664	11,180	2,654	2,339	-11.9%
	All occupations	-	-	-	120,148	174,296	45.1%



Top Occupations by Job Postings in DFW

	Occupation	Apr. 2022 Unique Job Postings	May. 2022 Unique Job Postings	Jun. 2022 Unique Job Postings	Change, May. 2022 to Jun. 2022 (%)
1	Software developers	6,129	12,853	10,360	-19.4%
2	Registered nurses	6,619	7,185	9,944	38.4%
3	Computer occupations, all other	3,090	4,925	4,440	-9.8%
4	Sales representatives, wholesale and manufacturing, except technical and scientific products	4,058	5,720	4,280	-25.2%
5	Customer service representatives	3,528	4,261	3,305	-22.4%
6	Managers, all other	2,554	3,456	3,099	-10.3%
7	Accountants and auditors	1,732	3,063	2,873	-6.2%
8	Retail salespersons	3,632	3,410	2,824	-17.2%
9	Heavy and tractor-trailer truck drivers	2,186	5,132	2,688	-47.6%
10	Laborers and freight, stock, and material movers, hand	2,704	2,644	2,339	-11.5%
	All occupations	158,920	205,598	174,296	-15.2%



Positive Change in Demand by Jobs Postings in DFW

	Occupation	Median Annual Earnings	Median Advertised Salary	Average Monthly Hires	May. 2022 Unique Job Postings	Jun. 2022 Unique Job Postings	Month-over-month Change
1	Loan Officers	\$62,734	\$77,184	301	318	460	44.7%
2	Surgical Technologists	\$58,447	\$63,360	95	400	507	26.8%
3	Postsecondary Teachers	\$80,749	\$49,536	826	644	801	24.4%
4	Licensed Practical and Licensed Vocational Nurses	\$51,790	\$57,088	779	948	1162	22.6%
5	Architectural and Engineering Managers	\$164,347	\$139,776	131	656	766	16.8%
6	Driver/Sales Workers	\$30,219	\$34,944	827	1188	1342	13.0%
	All occupations	-	-	-	205,598	174,296	-15.2%



Negative Change in Demand by Jobs Postings in DFW

	Occupation	Median Annual Earnings	Median Advertised Salary	Average Monthly Hires	May. 2022 Unique Job Postings	Jun. 2022 Unique Job Postings	Month-over-month Change
1	Flight Attendants	\$65,869	\$34,432	148	115	11	-90.4%
2	Personal Service Managers, All Other	\$51,113	\$44,928	5	591	155	-73.8%
3	Food Preparation Workers	\$28,128	\$29,056	1,407	1,097	326	-70.3%
4	Cooks, Short Order	\$23,978	\$29,056	262	246	79	-67.9%
5	Cooks, Restaurant	\$30,609	\$25,984	4,254	3,612	1,297	-64.1%
6	Police and Sheriff's Patrol Officers	\$76,739	\$64,512	269	219	83	-62.1%
7	Bakers	\$27,209	\$26,496	307	397	153	-61.5%
8	Waiters and Waitresses	\$21,560	\$30,656	7,445	3,133	1,294	-58.7%
9	Butchers and Meat Cutters	\$28,332	\$27,008	164	246	106	-56.9%
10	Cashiers	\$23,965	\$25,024	8,388	2,019	888	-56.0%
	All occupations	-	-	-	205,598	174,296	-15.2%



DFW Employment by Industry

Industry	Jun. 2021 Employment	Apr. 2022 Employment	May. 2022 Employment	Jun. 2022 Employment	Change, Jun. 2021 to Jun. 2022 (%)	Change, May. 2022 to Jun. 2022 (%)
Mining, quarrying, and oil and gas extraction	91,300	94,400	96,100	95,800	4.9%	-0.3%
Construction	128,400	137,600	138,300	135,000	5.1%	-2.4%
Manufacturing	286,500	294,200	296,000	299,600	4.6%	1.2%
Wholesale and retail trade	591,300	618,800	621,500	622,300	5.2%	0.1%
Transportation and utilities	237,200	258,500	259,700	263,700	11.2%	1.5%
Information	81,700	85,900	86,100	87,100	6.6%	1.2%
Financial activities	339,500	362,200	364,100	367,300	8.2%	0.9%
Professional and business services	675,800	738,300	753,000	755,200	11.7%	0.3%
Education and health services	457,400	483,700	481,500	486,500	6.4%	1.0%
Leisure and hospitality	373,100	405,600	418,300	428,800	14.9%	2.5%
Other services	121,600	129,900	132,800	134,300	10.4%	1.1%
Government	440,500	454,000	452,600	442,600	0.5%	-2.2%
Total nonfarm	3,824,300	4,063,100	4,100,000	4,118,200	7.7%	0.4%

Numbers may not sum due to rounding. Employment is not seasonally adjusted.

* DFW includes Collin, Dallas, Denton, Ellis, Hunt, Johnson, Kaufman, Parker, Rockwall, Tarrant, and Wise counties.

Source: Bureau of Labor Statistics State and Area Employment, Hours, and Earnings, August 2022.



DFW vs. U.S. Employment by Industry

Industry	DFW Jun. 2022 Employment	DFW Jun. 2022 Employment Share (%)	DFW Employment Change, Jun. 2021 to Jun. 2022 (%)	U.S. Jun. 2022 Employment	U.S. Jun. 2022 Employment Share (%)	U.S. Employment Change, Jun. 2021 to Jun. 2022 (%)
Mining, quarrying, and oil and gas extraction	95,800	2.3%	4.9%	629,000	0.4%	10.5%
Construction	135,000	3.3%	5.1%	7,858,000	5.1%	4.0%
Manufacturing	299,600	7.3%	4.6%	12,875,000	8.4%	4.2%
Wholesale and retail trade	622,300	15.1%	5.2%	21,697,700	14.2%	2.8%
Transportation and utilities	263,700	6.4%	11.2%	6,994,100	4.6%	7.4%
Information	87,100	2.1%	6.6%	3,031,000	2.0%	7.4%
Financial activities	367,300	8.9%	8.2%	8,994,000	5.9%	2.4%
Professional and business services	755,200	18.3%	11.7%	22,310,000	14.6%	5.5%
Education and health services	486,500	11.8%	6.4%	24,145,000	15.8%	2.9%
Leisure and hospitality	428,800	10.4%	14.9%	16,315,000	10.7%	10.5%
Other services	134,300	3.3%	10.4%	5,770,000	3.8%	4.6%
Government	442,600	10.7%	0.5%	22,073,000	14.5%	0.8%
Total nonfarm	4,118,200	100.0%	7.7%	152,692,000	100.0%	4.2%

Numbers may not sum due to rounding. Employment is not seasonally adjusted.

* DFW includes Collin, Dallas, Denton, Ellis, Hunt, Johnson, Kaufman, Parker, Rockwall, Tarrant, and Wise counties.

Source: Bureau of Labor Statistics State and Area Employment, Hours, and Earnings, and Current Employment Statistics, August 2022.



Questions?

Please contact Cody Gibbs at Cody.Gibbs@UTDallas.edu
or visit us at <https://economicengine.utdallas.edu/>

Subscribe to the Economic Development Update, released the second and fourth Wednesday of every month.