



**DFW
LABOR MARKET
UPDATE
FEBRUARY 2022**

Published April 13, 2022

Summary

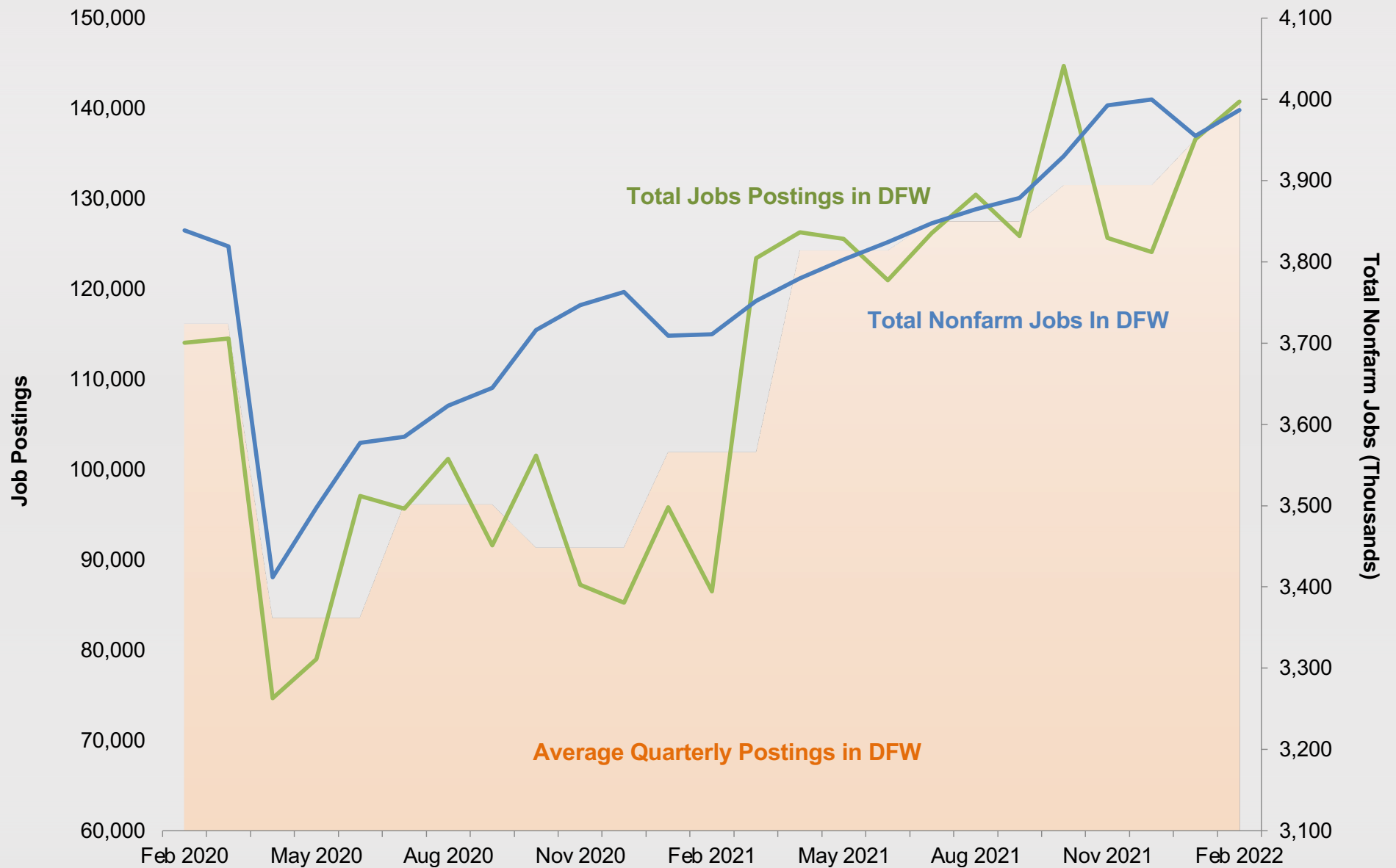
DFW recorded a **net gain** of **31,800 jobs** in February. From the previous month, **unemployment rates** in DFW stayed steady at 4.1%, while Texas and the United States saw decreases. The largest decrease in employment numbers from the previous month was **other services**, which includes businesses operating in personal services, repair, and maintenance, and religious, grantmaking, civic, professional organizations subsectors. The **leisure and hospitality** industry saw the largest growth from the previous month at roughly **2.1%** and **education and health services** in second place at **1.7%**. From February of 2021, **all industries**, except for government which saw a decrease by 600 jobs, had **increases** in their employment.

For the top job postings, **software developers** and **heavy truck drivers** both saw significant **increases** in the number of postings from the previous month. Meanwhile, **customer service representatives**, which was last month's top job by total postings, had a **decrease** of approximately **33.5%** during the same time period. **Bus and truck mechanics** also saw some of the highest month-over-month growth, with 182 new postings being added and a corresponding 131% overall increase. Tech professionals also saw increases, as **computer network architects** and **web developers** had some of the largest relative growth from January.

See the Federal Reserve Bank of Dallas' [Texas Employment Forecast](#) and [DFW Economic Indicators](#) for deeper analysis of these dynamics.



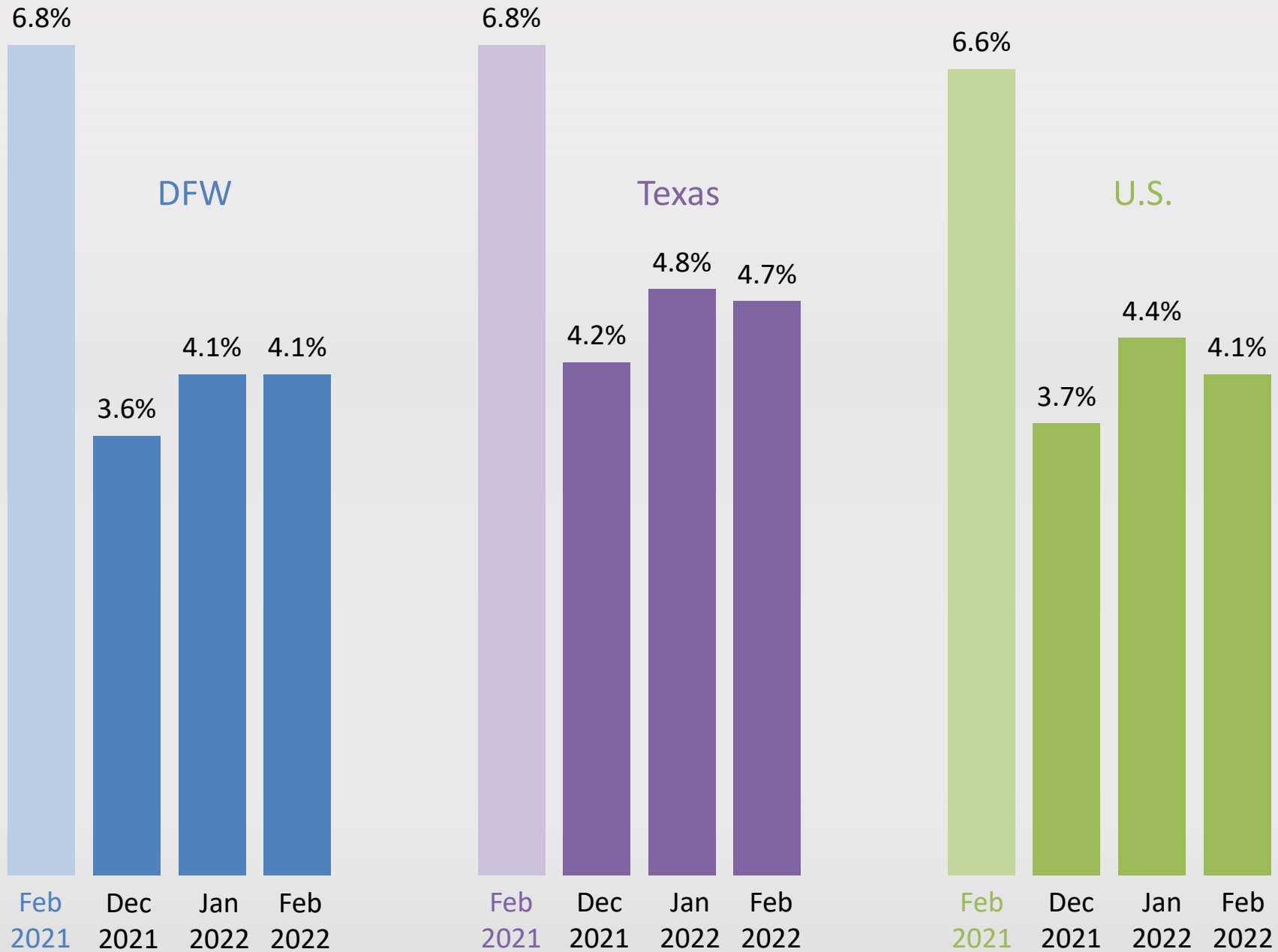
DFW – Job Postings vs. Nonfarm Jobs



* DFW includes Collin, Dallas, Denton, Ellis, Hunt, Johnson, Kaufman, Parker, Rockwall, Tarrant, and Wise counties.
Source: Bureau of Labor Statistics State and Area Employment, Hours, and Earnings, April 2022. Emsi Burning Glass, 2022.



Unemployment Rates* in DFW, Texas, and U.S.



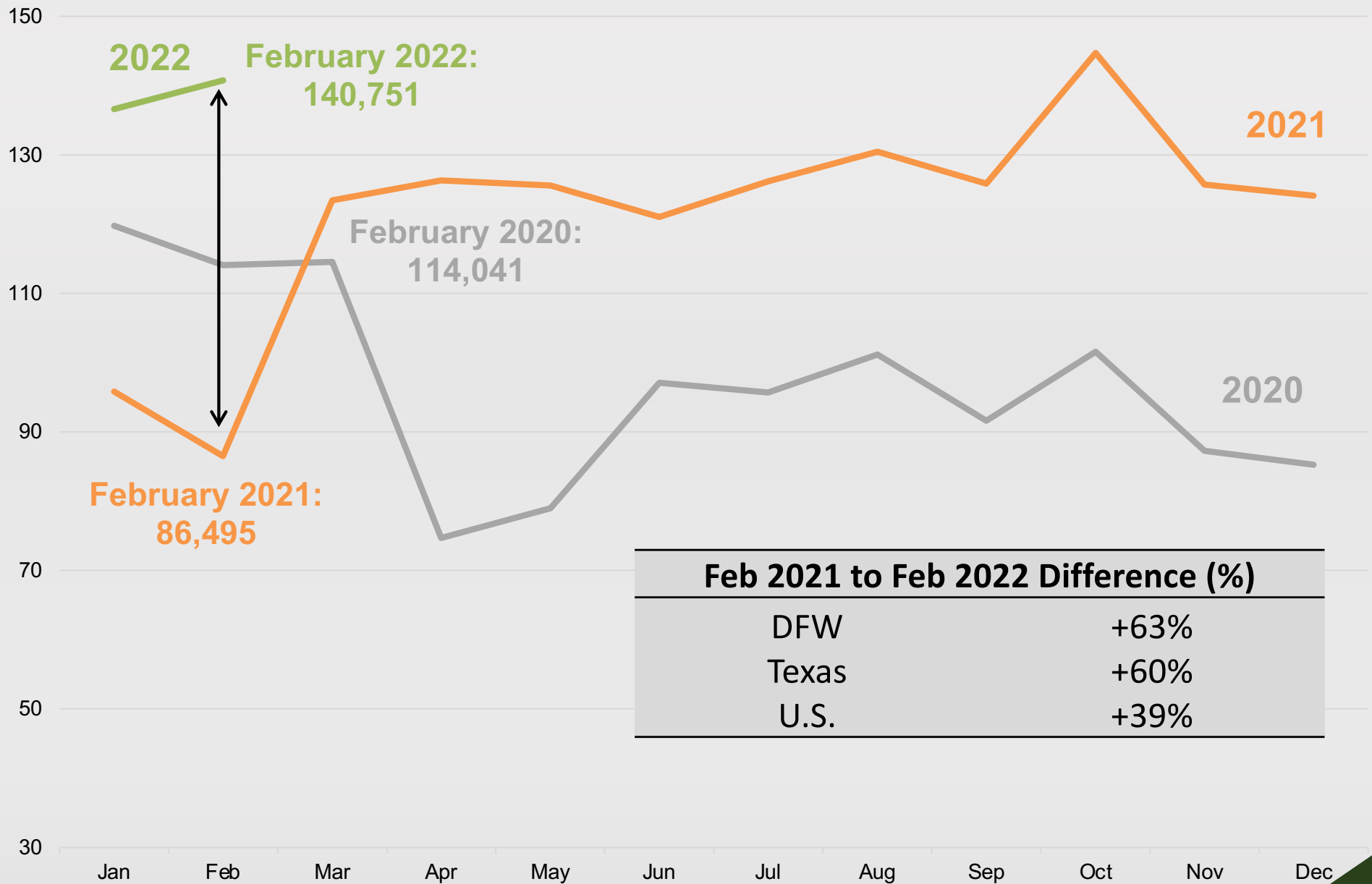
*Not seasonally adjusted.

Source: Bureau of Labor Statistics, Labor Force Statistics, April 2022.



DFW Total Job Postings Over the Years

Job postings, thousands

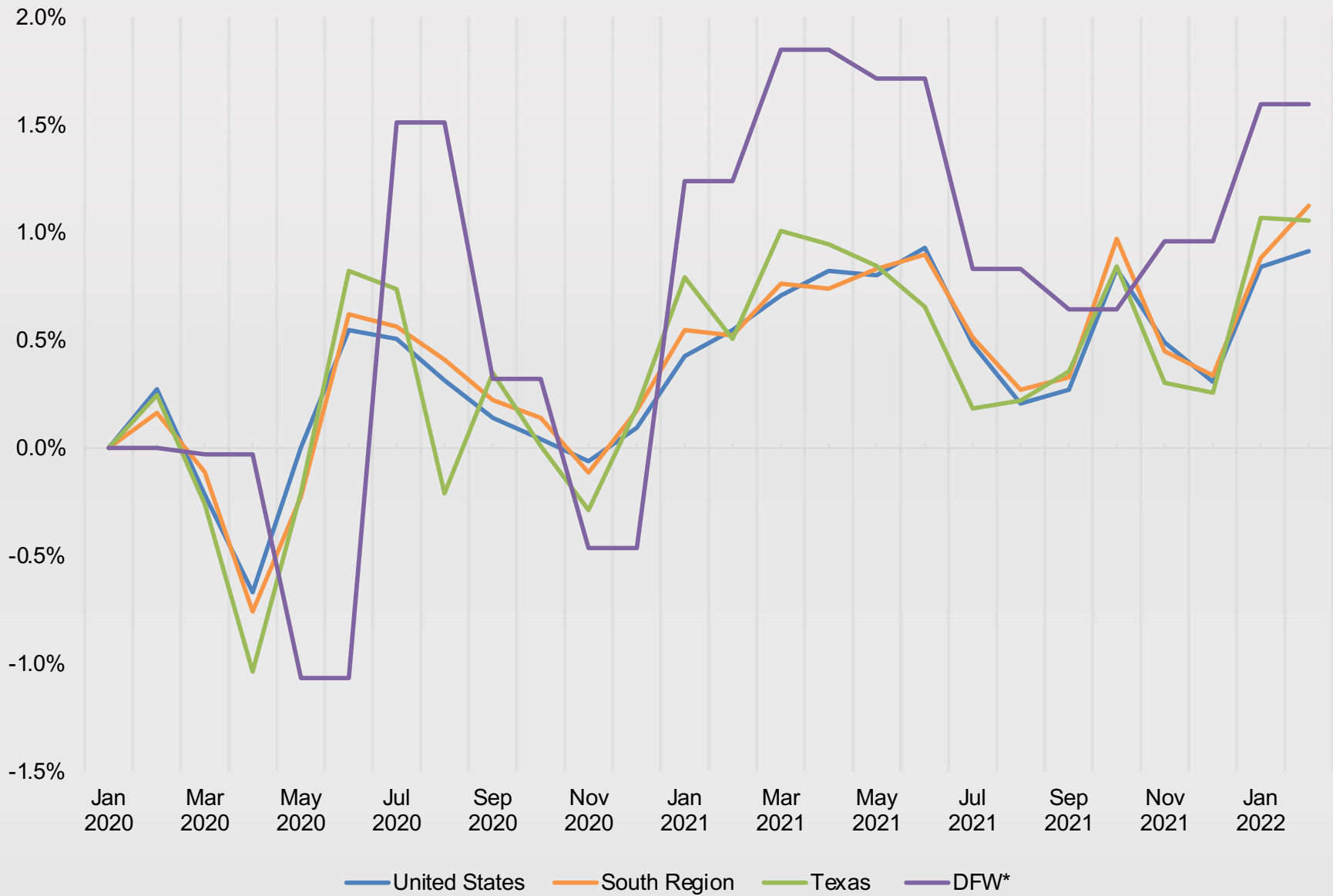


Feb 2021 to Feb 2022 Difference (%)	
DFW	+63%
Texas	+60%
U.S.	+39%

Source: Emsi Burning Glass, 2022.

Change in Consumer Price Index

Monthly Change in Consumer Price Index



Note: Data for DFW is reported every other month. All other figures are reported monthly.

Source: Texas Comptroller of Public Accounts, Key Economic Indicators, April 7, 2022. Bureau of Labor Statistics, CPI for All Urban Consumers (CPI-U), April 2022.



Top Occupations by Job Postings in DFW

Occupation	Median Annual Earnings	Median Advertised Salary	Average Monthly Hires	Feb. 2022 Unique Job Postings	Feb. 2021 Unique Job Postings	Change, Feb. 2021 to Feb. 2022 (%)
1 Software developers and software quality assurance analysts and testers	\$110,171	\$119,552	2,325	7,500	4,466	67.9%
2 Registered nurses	\$76,957	\$91,904	1,420	5,886	4,119	42.9%
3 Sales representatives, wholesale and manufacturing, except technical and scientific products	\$63,058	\$60,032	1,564	4,034	3,110	29.7%
4 Customer service representatives	\$37,208	\$33,408	6,657	3,934	2,034	93.4%
5 Retail salespersons	\$25,728	\$31,104	8,376	3,521	1,769	99.0%
6 Fast food and counter workers	\$21,212	\$25,024	13,852	3,072	1,141	169.2%
7 Computer occupations, all other	\$97,043	\$119,552	444	2,902	1,902	52.6%
8 Heavy and tractor-trailer truck drivers	\$48,592	\$66,944	4,059	2,708	1,831	47.9%
9 Personal service managers, all other; entertainment and recreation managers, except gambling; and managers, all other	\$133,854	\$79,744	381	2,461	1,548	59.0%
10 Laborers and freight, stock, and material movers, hand	\$31,071	\$33,408	10,469	2,297	1,569	46.4%
All occupations	-	-	-	140,522	86,469	62.5%



Top Occupations by Job Postings in DFW

	Occupation	Dec. 2021 Unique Job Postings	Jan. 2022 Unique Job Postings	Feb. 2022 Unique Job Postings	Change, Jan. 2022 to Feb. 2022 (%)
1	Software developers and software quality assurance analysts and testers	5,723	5,234	7,500	43.3%
2	Registered nurses	5,606	5,568	5,886	5.7%
3	Sales representatives, wholesale and manufacturing, except technical and scientific products	3,244	3,816	4,034	5.7%
4	Customer service representatives	2,794	5,920	3,934	-33.5%
5	Retail salespersons	3,359	3,388	3,521	3.9%
6	Fast food and counter workers	2,615	2,884	3,072	6.5%
7	Computer occupations, all other	2,466	2,449	2,902	18.5%
8	Heavy and tractor-trailer truck drivers	1,872	1,755	2,708	54.3%
9	Personal service managers, all other; entertainment and recreation managers, except gambling; and managers, all other	2,184	2,441	2,461	0.8%
10	Laborers and freight, stock, and material movers, hand	2,401	2,474	2,297	-7.2%
	All occupations	124,029	136,277	140,522	3.1%



Sample of Recent High Growth Jobs in DFW

	Occupation	Median Annual Earnings	Median Advertised Salary	Average Monthly Hires	Feb. 2022 Unique Job Postings	Jan. 2022 Unique Job Postings	Month-over-month Change
1	Bus and Truck Mechanics and Diesel Engine Specialists	\$54,366	\$54,912	336	321	139	130.9%
2	Emergency Medical Technicians and Paramedics	\$34,724	\$42,624	104	221	113	95.6%
3	Hairdressers, Hairstylists, and Cosmetologists	\$20,992	\$44,672	872	228	121	88.4%
4	Childcare Workers	\$24,364	\$30,144	2,148	522	293	78.2%
5	Postsecondary Teachers	\$70,585	\$50,048	921	470	295	59.3%
6	Demonstrators and Product Promoters	\$35,738	\$41,600	360	314	209	50.2%
7	Computer Network Architects	\$125,140	\$109,312	219	464	344	34.9%
8	Web Developers and Digital Interface Designers	\$76,296	\$102,784	175	1,087	833	30.5%
9	First-Line Supervisors of Food Preparation and Serving Workers	\$33,060	\$31,104	2,375	1,023	807	26.8%
10	Cooks, Restaurant	\$27,159	\$31,104	3,716	1,648	1,314	25.4%
	All occupations	-	-	-	140,522	136,277	3.1%



DFW Employment by Industry

Industry	Feb. 2021 Employment	Dec. 2021 Employment	Jan. 2022 Employment	Feb. 2022 Employment	Change, Feb. 2021 to Feb. 2022 (%)	Change, Jan. 2022 to Feb. 2022 (%)
Mining, quarrying, and oil and gas extraction	87,900	90,900	91,900	92,100	4.8%	0.2%
Construction	124,700	134,000	131,100	130,700	4.8%	-0.3%
Manufacturing	281,700	288,100	284,400	288,300	2.3%	1.4%
Wholesale and retail trade	575,400	619,400	613,000	612,900	6.5%	0.0%
Transportation and utilities	238,500	275,000	259,100	258,200	8.3%	-0.3%
Information	79,600	85,600	86,300	86,500	8.7%	0.2%
Financial activities	331,200	351,000	352,800	357,600	8.0%	1.4%
Professional and business services	649,600	721,000	715,000	723,700	11.4%	1.2%
Education and health services	451,300	470,800	466,500	474,300	5.1%	1.7%
Leisure and hospitality	327,700	382,700	380,300	388,100	18.4%	2.1%
Other services	112,500	127,900	125,600	124,100	10.3%	-1.2%
Government	450,700	453,500	448,800	450,100	-0.1%	0.3%
Total nonfarm	3,710,800	3,999,900	3,954,800	3,986,600	7.4%	0.8%

Numbers may not sum due to rounding. Employment is not seasonally adjusted.

* DFW includes Collin, Dallas, Denton, Ellis, Hunt, Johnson, Kaufman, Parker, Rockwall, Tarrant, and Wise counties.

Source: Bureau of Labor Statistics State and Area Employment, Hours, and Earnings, April 2022.

DFW vs. U.S. Employment by Industry

Industry	DFW Feb. 2022 Employment	DFW Feb. 2022 Employment Share (%)	DFW Employment Change, Feb. 2021 to Feb. 2022 (%)	U.S. Feb. 2022 Employment	U.S. Feb. 2022 Employment Share (%)	U.S. Employment Change, Feb. 2021 to Feb. 2022 (%)
Mining, quarrying, and oil and gas extraction	92,100	2.3%	4.8%	588,000	0.4%	10.7%
Construction	130,700	3.3%	4.8%	7,284,000	4.9%	4.5%
Manufacturing	288,300	7.2%	2.3%	12,577,000	8.4%	3.4%
Wholesale and retail trade	612,900	15.4%	6.5%	21,395,300	14.3%	3.7%
Transportation and utilities	258,200	6.5%	8.3%	6,937,200	4.7%	7.6%
Information	86,500	2.2%	8.7%	2,899,000	1.9%	5.5%
Financial activities	357,600	9.0%	8.0%	8,848,000	5.9%	2.0%
Professional and business services	723,700	18.2%	11.4%	21,806,000	14.6%	5.6%
Education and health services	474,300	11.9%	5.1%	24,154,000	16.2%	2.8%
Leisure and hospitality	388,100	9.7%	18.4%	14,717,000	9.9%	17.4%
Other services	124,100	3.1%	10.3%	5,582,000	3.7%	6.0%
Government	450,100	11.3%	-0.1%	22,356,000	15.0%	1.7%
Total nonfarm	3,986,600	100.0%	7.4%	149,144,000	100.0%	4.9%

Numbers may not sum due to rounding. Employment is not seasonally adjusted.

* DFW includes Collin, Dallas, Denton, Ellis, Hunt, Johnson, Kaufman, Parker, Rockwall, Tarrant, and Wise counties.

Source: Bureau of Labor Statistics State and Area Employment, Hours, and Earnings, and Current Employment Statistics, April 2022.

Questions?

Please contact Cody Gibbs at Cody.Gibbs@UTDallas.edu
or visit us at <https://economicengine.utdallas.edu/>

[Subscribe](#) to the Economic Development Update, released the second and fourth Wednesday of every month.